



April 2014
www.mistletoeheights.org
 Photo By Jim Peipert

PRESIDENT'S CORNER

There are a handful of commercials that I actually look forward to seeing. One of them starts by showing a little boy seeing others kids spraying paint on a wall of a man's store. He sees the result of their actions and feels hurt. He then sees a boy at school getting bullied by another student and he again feels the hurt. Those actions cause him to want change for the world. He does one good deed, which spurs a chain of good deeds. I love this commercial because it helps to shape my own frame of mind. In the end, the boy's actions come full circle. This commercial always brings a smile to my face, and a recommitment in my heart to do good deeds. (http://youtu.be/XtIsiKu_JUG) I've always wondered if witnessing acts of kindness has a similar effect on others as well, and apparently some researchers have had the same question.

Psychologists from a number of universities recently conducted a study where participants viewed either a neutral or uplifting video of people expressing gratitude to their mentors, which was designed to provide a burst of positive feelings. Many participants then wrote essays about what they saw, and were paid for their time. Researchers found that those who watched the uplifting clips were more likely to volunteer as subjects for future projects.



While it can be argued that those who watched pleasant and uplifting videos were more likely to participate in future studies because they found the experience more enjoyable, and more likely to repeat it, the willingness to help in the future by those who watched others display kindness can also be interpreted as a greater propensity toward helping others. The research continued. In the second part of the study, the research assistant helping with the project pretended to have trouble opening a computer file necessary for the experiment. She told everyone that they were free to leave, but asked if they would be willing to fill out a questionnaire that she described as boring.

The results of this study put a smile on my face. Participants who viewed the uplifting clip spend about twice as much time helping the assistant as did participants in either of the other groups! This means that finding the experiment enjoyable, or wanting to make additional money participating in studies, isn't what was behind people's willingness to help out. The researchers themselves concluded that "by drawing out positivity, even brief exposure to other individuals' communal behavior, motivates selflessness, thus potentially providing an avenue for increasing the general level of community in society."

This research left me with a warm, fuzzy feeling and a determination to see this in action in my own life. Will people in my community be kinder to others if they see more kindness from me? Will they be less stressed? I intend to find out, though I expect I already know the answer.

Kyle Jensen

Continued on page 10

Inside This Issue:

Page 2-4 - What's Up in the Neighborhood, YOM, Easter Egg Hunt, Welcome Erin Peick and Daughter Anna

Page 5-6 - Your Spring Garden, Fun Runs, Good Will
 Page 7-8 - Chisholm Trial Parkway Update

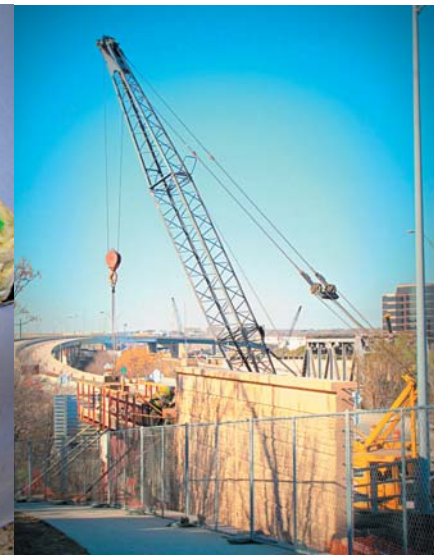
Page 9-10 - Advertising Submiss., Support Advertisers, In the Cultural District, Jerome Sidewalk, President's Corner

Page 11-12 - Classifieds, Helpful Numbers

What's Up in the Neighborhood



Photos By Jim Peipert



The Yard of the Month

1312 Mistletoe Drive

Selected for the April Yard of the Month is the beautiful home of Jeff & Karen Bourland located at 1312 Mistletoe Dr. When Jeff and Karen moved into the house 10 years ago, with their four children, it was a homecoming for Jeff because this is the same house he grew up in as a child.

Impressive features of the yard are the well-manicured lawn and the precisely trimmed boxwoods that span the entire width of the house. The house sits on a one-acre lot with abundant trees that create a peaceful and serene setting.

—Dena Goetz



** A big "thank you" to Dena for taking over Yard of the Month!

**OPEN FOR
FITNESS**



*Our brand new club is now open and we're excited to meet you! Anytime Fitness is unlike other gyms – we build relationships while we're building muscles. Here you'll find the support you need, and see your fitness goals become our goals too. **Join now to receive:***

BRING THIS AD FOR NO ENROLLMENT FEE & 1 TRAINING SESSION

Stop-in and discover a great way to get in shape!
 1714 8th Avenue
 Fort Worth, TX 76110
 817-207-0900
 AnytimeFitness.com



SOME RESTRICTIONS APPLY. EXPIRES MAY 31, 2014

Hop on Over to the Easter Egg Hunt

Get your Easter basket ready for the annual Mistletoe Heights Easter Egg Hunt at Newby Park on Saturday, April 19, at 10 a.m. To participate, deliver two dozen plastic eggs filled with age appropriate candy or toys to 2341 W. Magnolia Ave by Thursday, April 17. Be sure to put your child's age, name, and a telephone number on the bag. Remember to bring your Easter basket and camera to the Egg Hunt. Rumor has it that the Easter Bunny will be making an appearance!

All neighbors are welcome to come to Newby Park Saturday morning and watch the Egg Hunt. Coffee, juice, and bagels will be provided compliments of the Neighborhood Association. For more information, call Susan Pressley at 817-308-1484.

If it rains, the Easter Egg Hunt will be rescheduled for 2:00 p.m., and if it is still raining, the hunt will be cancelled and your eggs can be picked up at 2341 W. Magnolia.

www.edwardjones.com

Will You Get the Most from Your Social Security Benefits?

Deciding when to take your Social Security benefits is one of the most important retirement-related decisions you'll ever make. It will likely be an essential component of your retirement income strategy, so it's important to understand what factors will determine your benefit amount. Your informed decisions on timing, spousal benefits and other factors can make a significant difference on the lifetime benefits you receive.

Learn about your Social Security options and the effect they have on your overall retirement income strategy. Call or visit today.



Bruce C Border, CFP®
Financial Advisor

2453 Forest Park Boulevard
Ft Worth, TX 76110
817-926-8056

Edward Jones®
MAKING SENSE OF INVESTING

IRT-7557-A

Member SIPC

Welcome to the Neighborhood

We have new neighbors on Irwin Street! Erin Peick and her daughter, Anna, have recently moved in to 2205 Irwin. She has been looking for a house in Mistletoe Heights for several years and is happy to finally be here! Erin is a freelance editor and has lived in the Fort Worth area for 10 years.

Jeri Jo Blackmon
Professional Tax Services

817-923-4393

Email: JeriJo@charter.net
Enrolled Agent licensed by the IRS

1408 Mistletoe Drive
Fort Worth, TX 76110

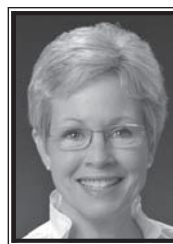
Cell: 817-925-7833
Fax: 817-924-7733

What would you like to see in the newsletter?

We want your feedback! What topics would you like to see in the newsletter? Send us your suggestions: newsletter@mistletoeheights.org.

PLEASE DON'T FENCE ME IN

In case you didn't know, I'm more than just a Mistletoe Heights' area Realtor—I represent buyers and sellers all over Fort Worth, Tarrant County and beyond.



*Call me with all
your real estate
needs & questions.*

Gaye Reed



817-688-1952
gayereed@cbdfw.com



Your Spring Garden

Here are a few vegetables to plant in your garden this spring:

Lettuces
Collard Greens
Kales
Cabbage
Radishes
Broccoli
Arugula
Beets
Carrots
Onions
Potatoes
Spinach
Herbs
Turnips

Celebrating Sweet 16

**Old
Neighborhood
Grill**

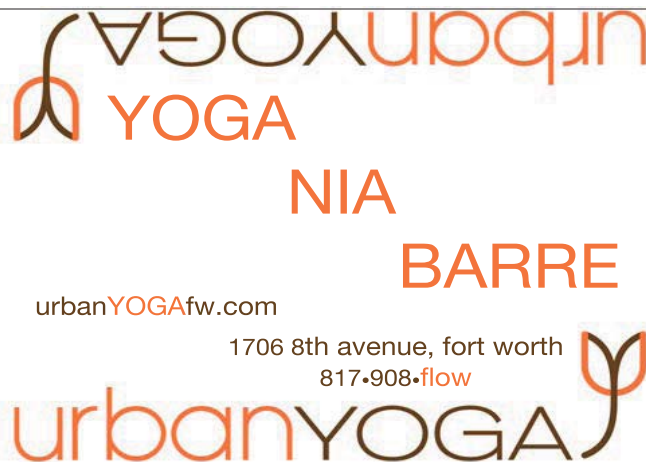


1633 Park Place

In Park Place Village
Between 8th Ave and Forest Park

817-923-2282

Open 7a - 9p • Mon - Sat



Fun Runs in the Area

**Run for Sarah 5K and 1 Mile Run/
Walk**

Saturday, April 5, 8 a.m.
runontexas.com

**Armageddon Ambush: The
Extreme Mud Run**

Saturday, April 5, 8:30 am
runontexas.com

**18th Annual Victory Over Violence
Run**

Saturday, April 12, 8 am
runontexas.com

Tracy's Race Against Melanoma

Saturday, May 17, 7:45 am
runontexas.com

Good Will

Share your stories, interests, and pictures with us! Email newsletter@mistletoeheights.org with your recipe ideas, gardening tips, fun stories, and artwork and we will share them with the neighborhood on this page in the newsletter.

Recipes

Gardening Ideas

Your Family's Story

Artwork

Poems

Photos

Decorating Ideas

Special Events Come In All Varieties

Indulge your love of nature with BRIT's free family events, special exhibits and Camp BRIT.



May 3 | BRIT's Prairie Day

Join us in celebrating our unique bioregion, the Fort Worth Prairie, with family-friendly events and activities.

May 16 - July 21

Fort Worth ISD Student Teacher Art Show

Come celebrate the working artists of FWISD as this joint student/teacher art show!

June 7 | First Saturday

A free family fun event featuring Saturday Science: Agents of Change, Bella's Story Time, Plant ID, and Farmers Market.

June - August | Camp BRIT™

Dig in, get dirty, and experience outdoor fun at Camp BRIT. Register today at brit.org.

June 14 - August 16

EcoScape Summer Landscape Contest

Online entry at fortworthtexas.gov/water. Presented by BRIT and the City of Fort Worth Water department and sponsored by NBC5.



BOTANICAL RESEARCH
INSTITUTE OF TEXAS
Plant to planet.

817.332.4441 | Follow us @BRIT_org | Facebook.com/BRITorg
1700 University Drive | Fort Worth, TX 76107-3400

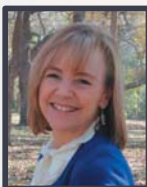


THINKING OF SELLING?

If you are considering a move, please contact me. We can discuss a possible list price for your home and a timeline that works best for your family.

	Sold Price/ SF Range	Sold Price Range
Berkeley	\$152 - \$200	\$282K - \$800K
Mistletoe	\$130 - \$205	\$222K - \$840K
Ryan Place	\$110 - \$173	\$212K - 565K
Fairmount	\$105 - \$143	\$200K - \$332K

*The low inventory
of existing homes
is pushing prices
up in many
neighborhoods
and producing a
strong
sellers market!*



Ruth Story
Broker Associate
817.992.9232

askRuthStory@gmail.com



www.RuthStoryOnline.com

Thank You!

To Carol Zuber-Mallison for our new logos!

Fort Worth Botanic Garden Spring Plant Sale!

Saturday, April 5
9 am to 2 pm

THE BANK NEXT DOOR

Bank closer to home at Southwest Bank's
Midtown Banking Center, at the corner
of West Rosedale and Jerome.



Lori Baldock
President
Commercial Lender
817.916.6110

 **Southwest Bank**

MIDTOWN BANKING CENTER
2201 MIDTOWN LANE
FORT WORTH, TX 76104

817-916-6100
SouthwestBank.com

Member FDIC

Join the Mistletoe Heights Email List!

To subscribe to the Mistletoe Heights Residents mailing list, go to mistletoeheights.org, click on "Email list" and look for "Subscribing to Residents." Enter your name and email address, and then click "Subscribe." Note: You may need to add residents-bounces@mistletoeheights.org to your address book to receive emails. If you have questions or concerns, contact moderator@mistletoeheights.org.

Check out our website: mistletoeheights.org
Join us on Facebook: facebook.com/mistletoeheights

Next Neighborhood Meeting

May 20, 7 pm
At the home of Robert and Stefanie Piwetz
2217 Irwin



Residential Roofing Specialists

No-Charge Estimates • Reroof • Repairs • Inspections

817-738-1756

Chisholm Trail Parkway Update

This information is from: www.ntta.org.

The North Texas Tollway Authority's Chisholm Trail Parkway is anticipated to open to traffic in the month of May 2014. The toll road extends 27.6 miles from west of Fort Worth's business district south to U.S. 67 in Cleburne. The north-south toll road provides motorists with an alternative to Interstate 35W.

The project is a collaboration between the NTTA, Texas Department of Transportation and the North Central Texas Council of Governments, Tarrant and Johnson counties, the cities of Burleson, Cleburne and Fort Worth, and the Union Pacific Railroad and the Fort Worth and Western Railroad.

Chisholm Trail Parkway is an all-electronic, or cashless, tolling road, meaning no tollbooths. Electronic tolling systems assess tolls for motorists as they travel. TollTag customers have the lowest rates; ZipCash, the pay-by-mail system, are assessed at a higher rate.

The following speed limits will be posted on the Chisholm Trail Parkway at its opening:

- From downtown Fort Worth to north of State Highway 183: 50 mph
- From SH 183 to Altamesa Boulevard: 60 mph
- From Altamesa Boulevard to U.S. 67: 70 mph

The NTTA will announce an exact date for the Chisholm Trail Parkway opening in the coming weeks. For more information on the Parkway, visit the NTTA website, contact us via email or call 817-202-9384 in Johnson County and 817-916-5105 in Tarrant County.



Pavani Bellary, DO



Stephanie Hiraki, DO



Aasia Janjua, MD



Niraj Mehta, DO



Morvarid Rezaie, DO

Get your FLU SHOT today!
\$25

**NO APPOINTMENT REQUIRED
FOR FLU SHOTS**

**Most insurance accepted,
including Medicare Part B**

Our board certified physicians want to take care of all your **primary care** needs - right here in your own neighborhood! Since continuity of care is ideal - our doctors are available **for you** at all major downtown Fort Worth hospitals, rehabilitation facilities and a SNF/nursing home.

2260 College Avenue, Fort Worth, TX 76110

TEL 817-870-DOCS (3627)

FAX 817-870-3636

www.associatesofinternalmedicine.com

Advertising Submission Process

All ads must be paid for by the tenth of the previous month the ad will appear in. Artwork for all ads should also be submitted by the tenth of the month prior. Artwork should be emailed to: advertise@mistletoeheights.org. Should you have any questions, please email advertise@mistletoeheights.org.

Support Our Advertisers!

The officers of the Mistletoe Heights Association encourage you to support the businesses that advertise in our newsletter. These organizations pay to be in our newsletter and support our neighborhood. Their business also makes this publication possible; without them we would not be able to provide printed newsletters to every household in the neighborhood free of charge.

PARK PLACE PHARMACY

Business Hours:
Monday - Friday
9:00am to 6:00pm

Closed Weekends
& Holidays

Craig Nicholson, RPh
Monique Nicholson, RPh

Your Neighborhood Pharmacy

Phone: 817-924-9292
Fax: 817-924-9264

1601 Park Place Ave, Suite B
Fort Worth, TX 76110-1303

Mediterranean flavors infused with Southern Hospitality.



Southern Hospitality. Mediterranean Flavor.
1622 Park Place Avenue | www.chadramezza.com
Fort Worth, TX 76110 | 817.924.2372

In the Cultural District

Amon Carter Museum of American Art

*Art & Appetite: American Painting, Culture,
and Cuisine* through May 18

Benito Huerta: Axis Mundi v. 2 through

February 1, 2015

June Wayne: The Tamarind Decade

through July 6

*James McNeill Whistler: Lithographs from
the Steven L. Block Collection at the Speed Art*

Museum through April 27

Texas Regionalism ongoing

Kimbell Art Museum

Permanent Collection

*Samurai: Armor from the Ann and Gabriel
Barbier-Mueller Collection* through August 17

Modern Art Museum of Fort Worth

David Bates through May 11

President's Corner

Continued From Page 1

How will you use this story in your own life? Share your experiences with us in next month's newsletter. We plan to start a page that is designated for anything you want to contribute to the neighborhood. Share a story; send us your favorite recipe; say thank you; or share your arts and crafts projects, whatever you choose to share, we will include it. Write a paragraph or two of "Good Will" and send it to newsletter@mistletoeheights.org by the tenth of the month. See Page 6. Bring a smile to someone's face!

Get connected. Be more engaging. We have lots of avenues to make our community better than the way we found it.

1. Facebook Chat Room www.facebook.com/groups/mhneighbors
2. NextDoor page www.mistletoeheights.nextdoor.com
3. Webpage www.mistletoeheights.org/contact
4. Next neighborhood meeting
5. The back of the newsletter

Join us as we make an effort to clean up our neighborhood and improve the quality of life for all those that live here.

- Kyle Jensen, MHA President

Sidewalk for Jerome

If you could do one small thing to improve Mistletoe Heights, would you take the time to do it? What if it made a REAL difference and it only took a couple of minutes?

Hello Neighbors! A group of volunteers has formed a committee to get continuous sidewalks installed on Jerome. Jerome has some of the heaviest traffic in the neighborhood, but it's also a major thoroughfare for pedestrians. Families with small children walk along Jerome to get to Lily B. and Newby Park. It's also a preferred route for joggers and dog walkers. The lack of continuous sidewalks means that people are forced to walk in the street with traffic, creating a potentially dangerous situation. We believe the city should complete the sidewalks on Jerome to make our neighborhood a safer and more livable community. It's a relatively easy and inexpensive project that would have a big impact on our neighborhood.

We are asking you to take a few minutes to write to Councilman Joel Burns and TPW Director, Doug Wiersig. Tell them the completion of sidewalks on Jerome is an important safety project that should be done as soon as possible. The city needs to know this matters to us! The more people that they hear from, the more likely we are to get sidewalks.

We know that when we work together as a neighborhood we can accomplish our goals. Please write to Councilman Burns and Director Wiersig today. We can do this; we just need your help.

Councilman Joel Burns
Joel.burns@fortworthtexas.gov
Director Doug Wiersig
Doug.wiersig@fortworthtexas.gov

FREE CLASSIFIED ADS

HANDYMAN IN YOUR NEIGHBORHOOD No job is too small. I live on Edwin and have local references. Have over 30 Years experience in remodel. Call Terry 817.454.1795 free estimates!!

COMPLETE PROPERTY RENOVATION: Demolition, cleanup, specializing in historic home renovations, painting, wallpaper. Contact Jeff Cuningham at 817-988-7113.

TUTOR, K-3rd grade. Caring, encouraging, experienced (12 years) certified elementary school teacher is offering tutoring this summer. Contact Kathy Jo Rogers at 817.688.0905 or kathyjorogers@sbcglobal.net.

COWTOWN COMPUTER SERVICES
Home Computer clean up and repairs. We pick it up, you don't lift a finger. 48-hour delivery time guaranteed Contact us today for pricing! 817-523-1058 cbrewer@cowtowncs.com cowtowncomputerservices.com

HOME WANTED
We'd like to buy a home (3+bed/2+ bath) around Lily B. Clayton or Tanglewood area for Spring/Summer 2014. Please call Lidia or Todd Bowers at 469.879.5172.

26 YEARS EXPERIENCE IN TEACHING. Tutoring Pre-K-2nd Grade. Is your child falling behind? Need some one-on-one attention? Don't want your child to lose what they've learned over the summer? I can help! Call Joy Ridler at 817.637.5541.

LEARN TO SWIM LESSONS
-With emphasis on Olympic strokes. Contact Richard Sybesma, Head Swim Coach, TCU Box 297600, Fort Worth, TX 76129; 817-257-5646 or 817-257-7963

TAX PREPARATION
Jeri Jo Blackmon, former IRS Agent and current Enrolled Agent licensed by the IRS will prepare and e-file your individual or business tax returns. Also, as a QuickBooks Pro Advisor, training is available for individuals or businesses who want to improve their skills or learn new skills using QuickBooks accounting software. Contact Jeri Jo Blackmon at 817-923-4393 or email JeriJo@Charter.net. 1408 Mistletoe Drive.

HARPIST: Sally Sledge ministers on the harp as a worshiper, psalmist and vocalist. She has recorded two CDs: "Return to Your Rest" and "Cherished Times". She is available to play for home groups, church events, Bible studies, weddings, funerals, dinner parties or any special occasion. For more information and song samples, you may access her web site at www.sallysledge.com.

HOME WANTED We'd like to buy a home - from an owner - no agents, please! 817-732-3836.

PIANO LESSONS
For beginners and intermediates. Mary Smith, 2300 W. Magnolia Ave. 817-927-8876.

ADULTS ENJOYING THE PIANO TOGETHER
- We focus on music & joy! Newbies ~ piano wannabes ~ relearners. Keyboard skills, music reading made easy, drumming, and moving to the music. 8-week workshops on weekday mornings at Arts Fifth Avenue in Fairmount. FREE preview classes. For more info visit our website at www.AdultMusik.com or contact Carol Spencer at 817.927.3240 or carolingfw@sbcglobal.net.

MISTLETOE HEIGHTS PET SITTERS is now booking for your vacation, or any other time. References available on request. Mistletoeheightspetsitters.com or 817-247-2870

ESTATE SALE SERVICES
Estate Sales & Appraisals Experienced, reliable estate sales in and out of Mistletoe Heights since 1992. Certified Appraiser, International Society of Appraisers. Appraisals for insurance, estate evaluations, donations; whatever your needs. Contact: Terri Ellis, Mistletoe Estate Sales, 817-926-9424 or email tquilts@mac.com

Helpful Phone Numbers, Emails, Addresses and Websites

City information

City Code violations	817.392.1234
City of Fort Worth	817.392.2255
fortworthtexas.gov	
Police—nonemergency	817.335.4222
Garage sale permits	817.392.7851
Graffiti abatement	817.212.2700
Lily B. Clayton Elementary	817.922.6660
schools.fwisd.org/clayton	
Paschal High School	817.814.-000
paschalhs.org	
Historical Preservation	
Liz Casso	817.392.8037
liz.casso@fortworthtexas.gov	
Southside Preservation Hall	817.926.2800
Hallyes@earthlink.net	
southsidepreservation.com	
The T/Longhorn Trolley	817.215.8600
the-t.com	
Trinity Railway Express	817.215.8600
trinityrailwayexpress.org	
City Council District 9	
Joel Burns	817.392.8809
district9@fortworthtexas.gov	

MHA officers

officers@mistletoeheights.org	
President	
Kyle Jensen	940.367.1428
president@mistletoeheights.org	
Vice President	
Ben Belsher	817.919.8375
vicepresident@mistletoeheights.org	
Secretary	
Valerie Ewing	817-791-9535
secretary@mistletoeheights.org	
Treasurer	
Jeri Jo Blackmon	817.923.4393
treasurer@mistletoeheights.org	
Newsletter Editor	
Stefanie Ball Piwetz	817.201.1909
newsletter@mistletoeheights.org	

Volunteers

Historic Preservation Committee	
Roger Ross	817.372.6865
Street Rep Captains	
Melissa Kohout (East side)	817.313.1419
Rosaline Eastepp Takes (West side)	817.207.9750
Welcome Baskets	
Kathy Jo Rogers	817.688.0905
Diana Brandenburg	214.734.9140
Advertising Manager	
advertise@mistletoeheights.org	
Newby Park	
Marjorie Day	817.914.8057
Email Moderator	
Richard Yantis	817.924.2857
Webmaster	
Scott Ewing	214.403.7762
Historian	
Luke Ellis	817.339.2459
Yard of the Month	
Dena Goetz	817.927.7076

Street reps (listed by blocks)

East of Forest Park	
2200 W. Rosedale South	
Dottie Guffey	817.921.6288
2200 Irwin	
Gary Willis	817.924.4000
2100/2200 Mistletoe Blvd.	
Melissa Kahout	817.313.1419
2100/2200 West Magnolia	
Colleen Shutt	214.455.9097
2200 Harrison	
Aaron Torkelson	817.907.5533
2100 Harrison Ave.	
Vacancy	
2100 Mistletoe Ave.	
Pat Hale	817.924.5263
2200 Mistletoe Ave.	
Richard & Christi Yantis	817.924.2857
2100/2200 Edwin	
Katrina Pittman	817.921.2221
2100 Weatherbee	
Judy Gude	817.926.8843
2200 Weatherbee	
Susan Harwell	817.923.8806
2100 Morphy	
Vacancy	
Forest Park Blvd.	
Steve McReynolds	817.926.7955
West of Forest Park	
2300 W. Rosedale South	
Kimberly Helixon	817.927.4641
2300 Irwin	
Sue Duvall	817.926.8714
2300/2400 Mistletoe Blvd.	
Lisa Stewart	817.924.9666
2300 West Magnolia	
Susan Pressley	817.923.6061
2300/2400 Harrison	
Robert DeVargas	817.923.9393
2300 Mistletoe Ave.	
Jason Fuller family	
2300 Edwin	
Grant Pannell	817.924.0051
1100 Clara	
Marc & Kathy Jo Rogers	817.923.3304
1200 Clara	
Bryce & Laura Docker	bryedocker@hotmail.com
1100 Buck	
Kate Herring	817.923.3843
1200/1300 Buck	
Trisha Dianne Stemple	817.926.6546
Mistletoe Drive	
Meralen & Gerry Tyson	817.926.5909
2300 Mistletoe Drive	
Chris Fershtand	817.923.8422
Carol Benson	817.921.4000

Neighborhood police officers

Sidney Keith (West)	817.944.1038
David Cloninger (East)	817.992.0181

MHA yearly memberships

Voluntary dues are \$15, \$25, \$50 or whatever you can afford. Your dues help pay for this newsletter, the Mistletoe Heights phone directory and many neighborhood functions. Please make your check payable to Mistletoe Heights Association. Mail to: Jeri Jo Blackmon, 1408 Mistletoe Drive.

Free classified ads

As a MH resident, you get one free classified ad. Please submit copy by the 15th of the month. Notify the editor at 817.201.1909 or email: newsletter@mistletoeheights.org.

Editorial policy

Articles and letters to the editor are welcomed. To be published as written, letters must be addressed to the editor, signed, and include a phone number.

Anonymous letters will not be published. Articles may be submitted for publication, signed or unsigned, subject to approval and editing.

Contact information helps, especially if we have questions for you.

Letters to the editor are limited to a half-page (approximately 350 words). Please send email to: newsletter@mistletoeheights.org.

Advertising information

To place an advertisement or for actual mechanical sizes, please email:

advertise@mistletoeheights.org

Rates:

Business-card size \$25

1/4 page \$50

Half page \$100

Full Page \$200

Pre-printed inserts \$100

8 1/2 x 11

Deadline for ads, payment and artwork is the tenth of the month.