

MISTLETOE EXPRESS

A FRONT PORCH COMMUNITY IN A HISTORIC DISTRICT

www.mistletoeheights.org

April - May 2018

President's Corner



Cory Bearden, President

Springtime is here! As I write this, many of you are preparing for the annual Mistletoe Heights/Berkeley Place Neighborhood Garage Sale. It's a perfect opportunity to say goodbye to clutter and yes to cash! Speaking of getting rid of clutter, The Crud Cruiser will be at the Como Community Center (4900 Horne St) on Saturday, April 28th from 9:00 until 11:00 am. Bring

household hazardous waste for

convenient, safe disposal. Don't forget your proof of residency such as a driver's license or water bill, as the Crud Cruiser is available for Fort Worth residents only.

North Texas Spring storms can become severe very quickly. Thankfully, there is a way Fort Worth residents can receive information about dangerous weather. Emergency text alerts can be sent directly to your mobile phone. Visit www.nixle.com to register for multiple locations or simply use your mobile phone to text your zip code to 888777. The City will notify you of a Severe Thunderstorm Warning/Watch or when the Outdoor Warning System is being tested. Other information such as criminal activity, severe traffic, or missing persons can be sent to you via text as well.

I hope you will join us at our next Neighborhood Meeting. We will meet Tuesday, May 15, 7:00 pm at Ensemble Coworking (1617 Park Place Ave. Suite 110). Come hear about the progress of the Mistletoe Drive sidewalk extension and an update on creating "quiet zones" at railroad crossings in Mistletoe and Berkeley. As always, we will enjoy refreshments and mingling with neighbors. Don't miss out!

The Perfect Day for an Easter Egg Hunt

This year's egg hunt was a little different but definitely a great success! The early bird gets the worm and that was certainly the case with the Newby Park pavilion this year. An area church had already reserved the pavilion so we moved our egg hunt to Lily B. and it worked out wonderfully. There was plenty of space for the egg hunt and there were definitely more hiding spots.



We were fortunate to have fantastic weather again this year. Many smiling neighbors and excited children came. In fact, we collected eggs from over 103 children from 61 different families. Parents, grandparents, and friends had fun watching the children gather up the eggs in record time. Within minutes, every egg had been found. After the egg hunt, the

Continued on Page 2.



Historic overlay helps preserve character of the neighborhood

Mistletoe Heights is a historic neighborhood, dating from the 1910s.

Wishing to preserve its architectural heritage and identity, most of the neighborhood is included in a historic overlay.

Any alterations or additions to the structures should be submitted to the neighborhood Historic Preservation Committee and must be approved by the city of Fort Worth's Historic & Cultural Landmarks Commission (HCLC).

Neighborhood Historic Preservation Committee: Roger Ross, 817-372-6865, or Susan Willis, 817-924-4000.

Historic & Cultural Landmarks Commission: Murray Miller, 817-392-8574, or Justin Newhart, 817-392-8037. The commission meets the second Monday of the month.

For further information, please refer to the Mistletoe Heights website, www.mistletoeheights.org, and click on Historic Guidelines.

Continued from Page 1.

The Perfect Day for an Easter Egg Hunt

Easter Bunny came by in her convertible to meet the children and pose for pictures. Everyone enjoyed talking to their neighbors and watching the kids play. It was a fantastic day to be outside.

A big THANK YOU to **Charlie Estes** for being the Easter Bunny for the last several years. Charlie is graduating this year and we wish her well. Also, thank you to **Susan Willis & Maggie Estes** for making sure the Easter Bunny could get to the hunt in style. Another big thank you goes to the **Grant and Reece families** for helping set up the egg hunt. Also, a VERY special thanks to all the kids who helped us hide eggs. We simply couldn't do it without all of you!

An interesting trivia question for anyone who can remember ... I believe Brent and I have been organizing the egg hunt since 2005. The Teagues organized it before we did. Does anyone know how many years the Mistletoe Heights Easter Egg Hunt has been going on? We would be curious to find out.





CHOOSE A LOCAL BRAND



RESIDENTIAL REAL ESTATE SERVICES
COMMERCIAL REAL ESTATE SERVICES
PROPERTY MANAGEMENT

1253 W. Magnolia Ave., Ft. Worth, TX 76104 | 817.920.0000
northernrealtygroup.com



Joy Massage

SPECIAL
SPRING/SUMMER

\$60

1-hour
Massage

- ▶ Light to deep tissue massage
- ▶ Chinese acupressure

Open Daily 9am - 8pm
1302 West Magnolia
Fort Worth, TX • 76104

817-714-3333



Licensed Therapist

Stay Connected with your neighbors



Get connected. Be more engaged.
Please share with us your experiences
of good will in the neighborhood to
newsletter@mistletoeheights.org and write me at
president@mistletoeheights.org. This is a great way to
find out what's going on in the neighborhood.

Mark Your Calendars

Spring Movie Night
Friday May 4 @ 7 pm,
Newby Park

Neighborhood Meeting
Tuesday May 15 @ 7 pm,
Ensemble Coworking (1617
Park Place Ave. Suite 110)



EXPERT WORKMANSHIP
QUALITY MATERIALS
PROFESSIONAL SERVICE

A SQUARE DEAL
- SINCE 1964 -

WWW.CITYROOFING.COM
817-738-1756

The Neighborhood **Workplace** and Your Home Office **AWAY** From Home



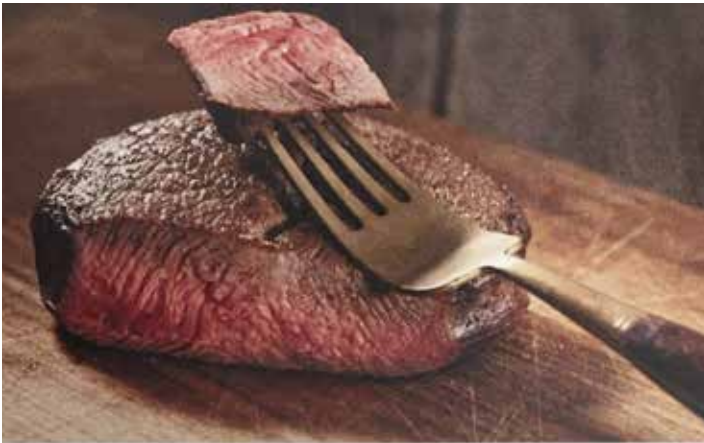
**ENSEMBLE
COWORKING**
Collaborative Business Community

All Inclusive
Month-to-Month

1617 Park Place Avenue, Suite 110
Next to Old Neighborhood Grill

Flexible & Dedicated Desks | Private Offices
Meeting Rooms | Event Space | Equipped Podcast Room

817.984.3633 | ensemblecoworking.com



Burgundy's Local Grass Fed Meat Market

DALLAS

3314 Ross Ave
CORNER ROSS
& HALL
972-707-7241

FT WORTH

3326 W 7th St
CULTURAL
DISTRICT
817-878-2722



Assisted Services, Inc. is a licensed non-medical agency providing 2 hour to 24 hour care and assistance in Tarrant County since 1994.

Our trained and experienced staff specializes in individualized care to meet all needs; such as personal care assistance, meal preparation, medication reminders, errands, transportation and respite. All services are designed to allow you and your loved ones to remain independent and in the environment of choice.

Call today for your free one hour assessment.

817-429-8476

In the city

Police non-emergency number: 817-392-4222

Crime updates are available to citizens at any time: fortworthpd.com. Go to crime information, then crime mapping.

Community engagement liaison: For our neighborhood, contact Tabitha Butler, 817-392-2045. tabitha.butler@fortworthtexas.gov

Link to city online pothole reporting form: <https://cityoffortworth.wufoo.com/forms/pothole.report>

Link to code compliance issues and to report graffiti: fortworthtexas.gov/codecompliance/myFtWorth

Link to garbage related issues: www.fortworthtexas.gov. Click on "Garbage and Recycling." Bulk trash pickup for our neighborhood is the week of the fourth Monday of the month.

Link to report animal issues, control, adoption: fortworthtexas.gov; or call 817-392-1234.

Link to request permit for garage sale: fortworthtexas.gov; or call 817-392-2222.

For travel health information and inoculations, call Tarrant County Public Health Department, Travel Health Services, 1101 S. Main St., Fort Worth, TX 76104. 817-321-4707

Fort Worth leash law: <http://fortworthtexas.gov/animals/laws>

Fort Woof Dog Park: <http://fortwoof.org>

Smart phone app: myFtWorth





Piano Lessons in the Convenience of Your Home

Lessons start at \$110/month.
Edward Brown is an active member
of the Fort Worth Music Teachers'
Association with 12 years experience
in and around Berkeley Place.
Call 469-487-6973 or email at
ejb0017@yahoo.com.

What would you like to see in the newsletter?

We want your feedback! What topics would you like to see in the newsletter? Send us your suggestions: newsletter@mistletoeheights.org.

Editorial policy

Articles and letters to the editor are welcomed. To be published as written, letters must be addressed to the editor, signed, and include a phone number. Anonymous letters will not be published. Articles may be submitted for publication, signed or unsigned, subject to approval and editing.

Contact information helps, especially if we have questions for you. Letters to the editor are limited to a half-page (approximately 350 words).

Please send email to: newsletter@mistletoeheights.org.

Do you know of a Mistletoe Heights neighbor who has accomplished something great? Tell us about it at newsletter@mistletoeheights.org.



Jeri Jo Blackmon
Professional Tax Services

817-923-4393

Email: JeriJo@charter.net
Enrolled Agent licensed by the IRS

1408 Mistletoe Drive
Fort Worth, TX 76110

Cell: 817-925-7833
Fax: 817-924-7733

Support Our Advertisers

The officers of the Mistletoe Heights Association encourage you to support the businesses that advertise in our newsletter. These organizations pay to be in our newsletter and support our neighborhood. Their businesses also make this publication possible. Without them we would not be able to provide printed newsletters to every household in the neighborhood free of charge.

Advertising Submission

All ads must be paid for by the 10th of the month prior to the month in which the ad will appear. Artwork for all ads should also be submitted by the 10th of the month prior. Artwork should be emailed to: advertise@mistletoeheights.org. Should you have any questions, please email advertise@mistletoeheights.org.

Advertising information

To place an advertisement or for actual mechanical sizes, please email: advertise@mistletoeheights.org

Business-card size \$25 • 1/4 page \$50

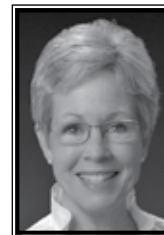
Half page \$100 • Full Page \$200

Pre-printed inserts \$100 for 8 1/2 x 11

Deadline for ads, payment and artwork is the 15th of the month.

PLEASE DON'T FENCE ME IN

In case you didn't know, I'm more than just a Mistletoe Heights' area Realtor—I represent buyers and sellers all over Fort Worth, Tarrant County and beyond.



*Call me with all
your real estate
needs & questions.*

Gaye Reed



817-688-1952
gaye.reed@cbfw.com



Location: Hilton Garden Inn • 7:05 pm – 8:02 pm

Officers Present:

President: Corey Bearden, Vice President: Mark Philpot,
Treasurer: Jeri Jo Blackmon, Newsletter: Jeff Parks.
Secretary: Val Ewing

Attendees: 23 residents in attendance per sign-in sheet

Corey Bearden introduced himself and then introduced special guest speaker, Amanda Lewis, a representative from Cook Children's Foundation, who then talked about how this year the children's hospital will be celebrating its 100th birthday from March 18-24. To show support for the kids they care for, they are requesting that blue lights be put on your house; whether that be changing out the porch lights with blue lights, or stringing up blue Christmas lights on the outside. The Celebration is called: "Let your lights shine." ACE Hardware will have blue light bulbs available beginning March 1. She distributed a flyer about the celebration. For more information: www.cook100years.org. If you have a story you want to share regarding Cook Children's Hospital, they encourage sharing your story on their user-friendly website. Amanda's presentation was complete and she exited the meeting.

The next guest, Officer McClellan, was introduced. He reported that our neighborhood has not had any crime activity. But he did emphasize the importance of locking car doors. He is now covering a larger area. He mentioned ATO, an organization set up to accept donations and provide support to hurt or fallen officers. Please check out the website and contribute: www.atofortworth.org. This concluded Officer McClellan's announcements and he left the meeting.

CALL TO ORDER – MHA Meeting began with Corey Bearden distributing a meeting agenda.

APPROVAL OF MINUTES – Motion to approve minutes from the meeting held November 2017. Approved.

ANNOUNCEMENTS:

- Easter egg hunt: Saturday March 31 at 10:00 am, Newby Park.
- Neighborhood Garage Sale: Saturday April 7. This year our garage sale will coincide with the Zoo run and the Berkeley garage sale. No need for a permit. At this time no permits are required for garage sales.
- Spring Movie Night: Friday May 4th at 7:00 pm, Newby Park.
- Next Neighborhood Meeting Tuesday May 15 at 7:00 pm, location TBD.

OFFICER REPORTS

Treasurer: Jeri Jo Blackmon distributed the income and expenses sheet. She also distributed a dues donations sheet as the annual dues drive begins in April. You can either mail in your payment or use PayPal. If you use PayPal, please indicate on the PayPal website the donor names you want listed in the newsletter (e.g. John and Jane Doe), so your name and donation can be recognized. **Question:** watering expenses for the berm are being paid for by our

association? Yes, annual cost: \$1967.05. This generated another comment regarding Newby Park as presently it is not getting watered like it should. This is a volunteer position and the former volunteer is no longer in charge of this task. If anyone would like to volunteer their time to water the flower beds at Newby Park, please get in touch with one of the MHA officers. This can also be a shared task if more than one person would like to be involved. Other expenses mentioned: Advertising income: \$2975 nearly equals the newsletter expenses: \$2794. And a final note, if you spent money on behalf of the organization, please keep your receipt and submit it to Jeri Jo Blackmon for reimbursement.

Newsletter: Jeff Parks requested that if you have stories, please submit them for the next Newsletter. Jeff reports that new ideas are needed and any input is appreciated.

Committee Reports:

Triangle: Robert DeVargas is in the process of looking into getting electricity and water to the Triangle. The purpose is to have water to keep the grass green because at this time it is only weeds and stickers. Electricity is needed for both sprinklers and the bounce houses and music provided during the annual July 4 parade. Corey will meet with Robert next week and they are hoping to have an update as to the cost. Once the cost is known then a decision can be made if this is an affordable and justifiable plan.

OLD BUSINESS

Historic Preservation Ordinance update: Mark Philpot reported that changes to the ordinance are in progress; to simplify, it can be broken down into 3 categories: 1. Change the tax benefit a home owner receives if they remodel. 2. Consider automatic granting of some approvals, such as wood windows. 3. Requirements to have a historic landmark. Mark Philpot will be sending out an update via the newsletter. **Question:** What is the driving force of these changes? City would like to reduce the backlog as there are only two people handling the work and it has become overwhelming. A MH resident provided an additional perspective: The HCLC wants to raise the standards to the national standards which is more stringent. Although there are pros and cons to this idea, it is not what the neighborhood thought it was getting when it voted for the overlay. However, as a neighborhood, we have never had any control. We have always had some influence with HCLC but it is their decision and, in the past, they have voted differently than what our committee has recommended.

City meetings to be aware of:

- Zoning Commission Meeting: March 14, 2018
- City Council Hearing April 4, 2018.

Saigebrook Apartments update: At this time, development is halted due to environmental issues being remediated. Example: the ground floor of the parking garage is designed to be three feet below the 100-year flood plain so elevation has to be corrected.

Assisted Living Facility on Magnolia east of Jerome: at this time, the project has been canceled. The new land owner reported that pursuing this type of development is too

WELCOME to the neighborhood

Corey Bearden
president@mistletoeheights.org

Hannah and Jeff Parks
newsletter@mistletoeheights.org

Please welcome **Mary Hughes, Pablo Sanchez,** and their sweet daughter **Flora**. They recently moved to 2236 Irwin Street.

If you know of any new neighbors, or if you're a new neighbor, please contact our association president, Corey Bearden, or our newsletter editor, Hannah Parks.

They will need your name, address, names of family members, age and gender of children and your contact information.

They will then pass your information on to our incredible duo of ladies, Kathy Jo Rogers and Denise Semple, of the Welcome Basket Committee, who would like to present you with a basket of goodies to welcome you to the neighborhood.

Continued from Page 6.

complicated right now. At this time, it is not known what will become of the land.

NEW BUSINESS

Request to sponsor Lily B. Clayton's Auction. We have done this in the past. Last year we gave \$550, the year previous, we donated \$500. Motion to donate \$600 was made and seconded. Motion approved. No opposition.

Date for Forest Park Pool Party with Berkeley Place Neighbors:

TBD. Corey Bearden will get with Berkeley and decide on a date.

Question: Update on the RR crossing and quiet zones? No new information.

Question: Update on sidewalk on Mistletoe Blvd and Mistletoe Drive? The work will be done but actual start date is not confirmed yet.

Meeting adjourned: 8:02 pm

How to reach the Mistletoe Heights Officers:

President: Cory Bearden
michael.corey.bearden@gmail.com

Vice President: Mark Philpot
mark@leaguere.com

Treasurer: Jeri Jo Blackmon
JeriJo@charter.net

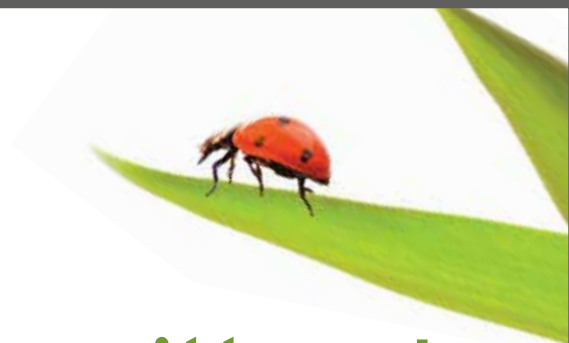
Newsletter: Hannah and Jeff Parks
hannah.penley@gmail.com,
jeffdparks@gmail.com

Secretary: Val Ewing
agdoc05@hotmail.com



BOTANICAL RESEARCH
INSTITUTE OF TEXAS

Plant to planet.®



Explore with us!

Dig in, get dirty, and experience hands-on fun with BRIT scientists and educators. Week-long camp sessions offered June - July. Register now at BRIT.org for a program to fit your blossoming scientists!

Bella Goes to Camp

June 11-14 or June 18-21

(students entering grades PreK - K)

Little B.I.T.™ - Botanists In Training

June 25-28 or July 9-12

(students entering grades 1 - 2)

My Plants, My Place

June 25-28 or July 9-12

(students entering grades 3 - 5)

ph 817.332.4441
1700 University Drive
Follow us @BRIT_org

BRIT.org
Fort Worth, TX 76107-3400
Facebook.com/BRITorg

a 501(c)(3) charitable organization

March and April 2018 Yards of the Month

Photos by Jim Peipert

March Yard — 2307 W. Magnolia Avenue



Welcome to almost-Spring, MH neighborhoodians and garden lovers! David and I have hibernated for a few months in order to devote some needed time to a family concern, but we've never failed to appreciate the care with which many of you continue to tend your gardens, even through the winter. There's a lot all of us can learn from seeing the bare bones and texture of a landscape, absent the much-loved spectacle of the colors of other seasons.

But we're sorry we missed some opportunities to celebrate bones-and-texture with yard sign and newsletter recognition, especially since it left us with a tough job deciding on the Yard of the Month for March! But, finally, we couldn't resist the combination of structure and texture with movement and flow that mark the front yard of **Melodie and David Hecht at 2307 W. Magnolia**.

The Hecht's garden was designed, using some existing elements, by Archie's Gardenland, and is enhanced by Melodie's seasonal touches. The grass along the curb strip is broken up by three square grass-less segments, lined with brick-style pavers, each of which sports a Japanese maple tree with six mounded *Gaura* plants at the base; these will send up tall, "whirly bird" flowers in the summer. These small mounds don't spread, though, and Melodie plans to add some more filler plants to cover the bare ground under the trees. The maples will stay on the small side, and provide wonderful fall color.

The wide sidewalk leading to the front porch is also defined by brick at the edges — very smart! — until it meets the curved beds that spread out on either side of the house. The walls on each side of the steps leading up to the porch support three large pots filled with eye-catching purple and silver *Wandering*

Jew, and lead the eye on to the front door, where another large pot flows with variegated *English Ivy*.

Back to the garden beds: nearest the walk on each side, at the widest part of the curves, is low-growing, dark green *Mondo* grass, striking set off by small, almost lime-green *Ligustrum* bushes of the "sunshine" variety. To the right of the walk and porch wall, closer to the house, *Asian Jasmine* provides another dark green ground cover. Its neat, sharp-edged trim contrasts nicely with the curve of looser, grassy *Mondo* in front of it. A *Crepe Myrtle*, which will flower dark pink through the summer, marks the midpoint of the *Jasmine* plot, and three dwarf *Pringle Yews*, with their lovely, mobile texture, mound softly along the along the house wall itself.

The larger bed to the left of the walk is also a study in contrasts of structure, texture, and movement. It is anchored by two graceful *Fan Palms* in front of the middle and far left pillars of the porch, with three

sturdy, upright cast iron plants between each one. In the middle ground are two bright green *Aralias*, with their large, glossy, coarse-fingered leaves, interspersed with multiple low-mounding, smooth-fingered dwarf variegated *Pittisporum*. *Hostas* will appear later in the spring. In the foreground, lowest in height, *Melodie* has added bright red, dark green leafed *New Guinea Impatiens*, setting a nice contrast with the perennial variegated *Liriope*.

This bed continues in a large curve past the far end of the house all the way to the property line. Here, the cast iron plants, *Pittisporum*, and *Impatiens* are repeated, setting off a *Dogwood*, which will bloom in spring. Awaiting planting are several more *Pringle Yews*; set in front of the tall, black cast iron fence that separates front yard from back, these will provide some privacy to the back yard without blocking the view entirely.

For those of you who might be interested in stealing some ideas from this lovely garden, note that the Hecht's home is north-facing, with a tall tree at on the east property line, which means that it is relatively, though not entirely, shady (the afternoon summer sun will certainly send some light its way), and many of these plants would not work well in a full sun location. Also worth noting, for any garden, is how much space (and good mulching!) has been left around the plantings. It's part of what gives the design its graceful feel. Although the spaces will fill in somewhat as the plants mature, the beds will never seem crowded.

Thank you, Melodie and David, for offering the neighborhood this delightful all-winter visual treat! And thanks to Jim Peipert for the photos!

Regards, and good gardening to all!



April Yard – 2224 Weatherbee

Hi, neighbors! Whether you're an active gardener, a runner, a baby or dog-walker, or just a front-porch lounge, David and I hope everyone in MH has been enjoying this lovely spring weather! **Susan Heaton** certainly has, and her front garden, at 2224 Weatherbee, our April Yard of the Month, is enjoying the love. Actually, there's been a lot of love at the home of Susan and her husband, **Jerry**, since one of their three adult kids just got married last week. Nothing like a wedding to get a true gardener planting! And then there are also Susan and Jerry's two young grandchildren, Levi and Jonah, who are frequent visitors from nearby Berkeley — a lot of help in the dirt, no doubt!

The Heaton's stately two-story Arts and Crafts house is set on a wide lot, allowing for a relatively wide bed on the far (west) side of the driveway. A mature pecan tree stands in the grassy foreground. Just behind this is a bed, lined by white limestone blocks, of 5 pink knockout roses, a crepe myrtle tree, and a patch of iris. Since Susan and Jerry just moved into their home last August, Susan still doesn't know what colors the crepe myrtle and iris will be, so we'll all find out together! The iris already has at least one bud, so keep your eye on that for a color announcement in the very near future. Back a bit further along this side of the drive is a huge red-tipped Photinia, now covered with white flowers. Though these bushes (usually) can easily hit 12 feet, I've never seen one as tall as this — reaching the second story roof line, and actually trained as a tree — a very striking statement!

Just across the driveway, wide steps lead up to the front porch, and the combination of the architecture, color palette, and plants here is what first caught David's and my eyes. As is the case with many of the Arts and Crafts homes in MH,

there are two low pillars on either side of the bottom of the front steps and a mid-height one at the top of one side — always three perfect places for pots. Susan has chosen large, bright white pots, which match the white capitals on which they sit, and filled them with red geraniums and some lambs' ear. The white and red say nothing less than "POW!" against the lovely sage green color of the house itself. Then, with nicely subtle understatement, the eye is more slowly drawn onto the shady porch, where the charcoal painted door is hung with a seasonal wreath and basket, and set off by two large black urns overflowing with ferns.

Starting at the driveway in front of the steps, and running past the far (east) end of the house, is a curved, well-mulched bed, again lined with white limestone. Low growing plants just in front of the steps invite the visitor in: Most striking are the three mounds of lacy foliage covered with small pink daisies with bright yellow centers. These are annuals, Susan says, but the

advantage of that is that they should bloom all summer, unlike the shorter bloom time of most perennials. The daisy mounds are interspersed with lambs' ear, whose soft fuzzy green complements the pink, and lime-green Sedum, which provides a contrasting pop.

On the far side of the steps, six or seven purple-leaved fringe flower (*Loropetalum*) bushes line the porch wall and round the corner. These will have had pretty raspberry blooms last month, but they were quite overgrown when Susan and Jerry moved in. Susan has thus taken the fairly radical step of having them pruned down to about waist height, give or take, so as not to obscure the top of the porch wall. Wisely, though, she has not sheared them off into a boxy hedge, but left the height and shape a bit irregular. This variation provides a nice complement to the straight, clean lines of the house, especially as bushes gracefully branch out over the growing season. (Note to gardeners: *Loropetalum* come in varieties of many sizes, so, if you're in the market, make sure to check the mature size of the one you're buying if you don't want to face this yearly pruning.) And, with the white trim of the porch wall now revealed, there a perfect place atop for two pots overflowing with pale blue annual *Plumbago*.

Susan's shorter plantings continue in front of the fringe flower bushes. Spiky Siberian Iris leaves punctuate that side of the steps, and will bloom yellow later in the season. Several blue pincushion plants (*Scabiosa*) are already merrily blooming. (This plant is one of my Texas favorites, for several reasons: It's a perennial that starts blooming early and, with deadheading, will keep going until frost or later. It spreads like a ground cover, but not invasively, offering more and more of its abundance every year. And it stays green all winter unless there's a deadly freeze. It also comes in pink. Who could ask

Continued on Page 11.

KELLERWILLIAMS
Luxury
 INTERNATIONAL

Just Listed
 2831 5th Avenue
 2017 Windsor Place

Coming Soon
 2024 Wilshire Blvd.

Under Contract
 3909 Modlin

Just Sold
 2908 Ryan Place Drive
 2608 Museum Way

SG
 Story Group

*Representing families in your neighborhood
 with the highest of standards.*



Ruth Story
 Broker Associate
 Listing Specialist
 817.992.9232
 Ruth@KWStoryGroup.com

www.RuthStoryOnline.com

Kati Story
 Buyer Specialist
 New Construction Specialist
 817.992.6817
 Kati@KWStoryGroup.com



Continued from Page 9.

March and April 2018 Yards of the Month

for more!) Interspersed with the pincushions are Lambs' Ear, dwarf Pittosporums, and Chrysanthemums, which Susan has chosen for the fall colors they'll provide in later in the season. At the far end of the porch, broom plants rise slightly taller than their neighbors. These are just beginning to lose their bright yellow flowers — another early season bloomer, nice with the raspberry fringe flower — but this easy-care perennial will offer bright green texture year-round.

The bed curves forward again toward the property line, marked first by another Crepe Myrtle and then ending in a bank of full-sized Pittosporum bushes, shaped into soft, continuous mounds. One might almost miss the small fountain set between the broom and Pittosporum, but once you see it your eye is drawn to a final, almost hidden visual treat: a small concrete patio running back along the side of the house, furnished with a curved bench in front and, further back, a glass and wrought iron table and chairs on a bright blue and white carpet. The patio sports more broom, here in pots, as well as potted palms, while a tall hedge at the property line lends both privacy and more greenery. A perfect leisure spot.

So, a slightly belated welcome to Mistletoe Heights, Susan and Jerry, and many thanks for your beautiful contribution to our neighborhood. We look forward to all the seasons to come in your front garden!

Continued from Page 2.

The Perfect Day for an Easter Egg Hunt



Who do you know?

Do you know anyone connected with a business on Park Place, Forest Park Boulevard, Eighth Avenue, Mistletoe Boulevard, Rosedale Street, Magnolia Avenue or Park Hill?

The Mistletoe Express is looking for someone to contact local businesses to advertise in our newsletter.

Over the past few years, the number of advertisers has dwindled, and we need new advertisers to break even on the cost of the newsletter.

Ideally, having an advertising manager for the newsletter would remedy this situation. The position would require a time commitment of only a few hours a month.

But if any individual neighbor has a contact with a business proprietor and would be willing to speak directly to that person about advertising in the Mistletoe Express, that would also be helpful.

If you are interested and able to help, contact treasurer Jeri Jo Blackmon for details about ad specifications, deadlines and pricing, or see page 5 of the newsletter, **Advertising Submission**. You know you know somebody! Thanks!

Join the Mistletoe Heights Email List

To subscribe to the Mistletoe Heights Residents mailing list, go to mistletoeheights.org, click on "Email List" and look for "Subscribing to Residents." Enter your name and email address, and then click "Subscribe." Note: You may need to add residents-bounces@mistletoeheights.org to your address book to receive emails. If you have questions or concerns, contact moderator@mistletoeheights.org.

Check out our website: mistletoeheights.org
Friend us on Facebook: facebook.com/mistletoeheights

Special Thanks

A special thanks to Elisa Rode, president of Kearley & Company, a full-service ad agency on the Near Southside, for generously volunteering her and her staff's time for the past two years to do the layout for the Mistletoe Heights newsletter. She and graphic artists team make a very significant contribution by designing the Mistletoe Express. We appreciate it very much!

MHA Yearly Memberships

Voluntary dues are \$15, \$25, \$50 or whatever you can afford. Your dues help pay for this newsletter, the Mistletoe Heights phone directory and many neighborhood functions. Please make your check payable to Mistletoe Heights Association. Mail to: Jeri Jo Blackmon, 1408 Mistletoe Drive.

Free Classified Ads

As a MH resident, you get one free classified ad.
Please submit copy by the 15th of the month.
Email to: newsletter@mistletoeheights.org.

COMPLETE PROPERTY RENOVATION

Demolition, cleanup, specializing in historic home renovations, painting, wallpaper. Contact Jeff Cuningham at 817-988-7113.

HANDYMAN YOUR NEIGHBORHOOD

No job is too small. I live on Edwin and have local references. Have over 30 Years experience in remodel. Call Terry 817.454.1795 free estimates!!

TAX PREPARATION

Jeri Jo Blackmon, former IRS Agent and current Enrolled Agent licensed by the IRS will prepare and e-file your individual or business tax returns. Also, as a QuickBooks Pro Advisor, training is available for individuals or businesses who want to improve their skills or learn new skills using QuickBooks accounting software.

Contact Jeri Jo Blackmon at 817-923-4393 or email JeriJo@Charter.net. 1408 Mistletoe Drive.

MISTLETOE HEIGHTS PET SITTERS

MISTLETOE HEIGHTS PET SITTERS is now booking for your vacation, or any other time. References available on request. Mistletoeheightspetsitters.com or 817-247-2870

Early Childhood Music and Movement

Mistletoe Musikgarten (www.MistletoeMusik.com) has returned to its roots, right here in our neighborhood. We offer music and movement classes for infants, toddlers, pre-schoolers and kinders. We sing, dance, and play simple instruments in our parent-child classes. Music and movement classes prepare your child for future learning successes. Contact Carol Spencer joyous579@gmail.com ~ 817.927.3240

PIANO LESSONS

For beginners and intermediates.
Mary Smith, 2300 W. Magnolia Ave.
817-927-8876.

SECURITY SERVICES

In light of recent thefts in our neighborhood, I'm offering installation services of web-based security cameras at a discount for Mistletoe Heights residents. My normal fee is \$120, but, for a limited time, I'm discounting my fee to \$89. I am a certified "Nest" installer and also install "Ring" devices, such as doorbell cameras and floodlight/camera combinations. If you have an existing motion-detection light, floodlight, outside fixture, or doorbell, we can install a camera. Please call me for a free estimate and consultation. 817-201-7100 David Luttrell, fortworthhomerepair.com

HOME WANTED

We'd like to buy a home - from an owner - no agents, please!
817-732-3836

PET PORTRAITS

Holidays and birthdays are a great time for portraits of your four-legged family members! Visit my website for examples. www.mkohouthorseportraits.com or call 817-313-1419. Questions welcomed!

TUTOR

K-3rd grade. Caring, encouraging, experienced (12 years) certified elementary school teacher is offering tutoring this summer. Contact Kathy Jo Rogers at 817.688.0905 or kathyjorogers@sbcglobal.net.

26 YEARS EXPERIENCE IN TEACHING

Tutoring Pre-K-2nd Grade. Is your child falling behind? Need some one-on-one attention? Don't want your child to lose what they've learned over the summer? I can help! Call Joy Ridler at 817.637.5541.

ESTATE SALE SERVICES

Estate Sales & Appraisals
Experienced, reliable estate sales in and out of Mistletoe Heights since 1992. Certified Appraiser, International Society of Appraisers. Appraisals for insurance, estate evaluations, donations; whatever your needs. Contact: Terri Ellis, Mistletoe Estate Sales, 817-926-9424 or email tquilts@mac.com

VINTAGE SALES

Estate Sales Vintage Sales has been helping people liquidate estates since 1992. Don't throw anything away before you talk to us! We can help you. Anne Bourland (817-919-0270) apbourland@aol.com John Bourland (817-307-6173)

HARPIST

Sally Sledge ministers on the harp as a worshiper, psalmist and vocalist. She has recorded two CDs: "Return to Your Rest" and "Cherished Times". She is available to play for home groups, church events, Bible studies, weddings, funerals, dinner parties or any special occasion. For more information and song samples, you may access her web site at www.sallysledge.com.

PET SITTING

At-home mom who LOVES animals would love to help take care of yours! Please call Diana Brandenburg, 214-734-9140.

FAMILY PHOTOGRAPHY BY DIANA BRANDE

At-home mom would love to take your family photos! I will come to you, portrait session or special events. Just call and we'll get those perfect photos for the Christmas card! Call 214-734-9140.

Helpful phone numbers, emails, addresses and websites

City information

City Code violations	817.392.1234
City of Fort Worth	817.392.2255
fortworthtexas.gov	
Police—nonemergency	817.392.4222
Garage sale permits	817.392.7851
Graffiti abatement	817.212.2700
Lily B. Clayton Elementary schools.fwisd.org/clayton	817.922.6660
Paschal High School	817.814.5000
paschalhs.org	
Historical Preservation	
Justin Newhart	817.392.8037
justin.newhart@fortworthtexas.gov	
Southside Preservation Hall	
Hallyes@earthlink.net	817.926.2800
southsidepreservation.com	
The T/Longhorn Trolley	817.215.8600
the-t.com	
Trinity Railway Express	817.215.8600
trinityrailwayexpress.org	
City Council District 9	
Ann Zadeh	817.392.8809
district9@fortworthtexas.gov	

MHA officers

officers@mistletoeheights.org	
President	
Cory Bearden	817.889.5032
president@mistletoeheights.org	
Vice President	
Mark Philpot	817.681.6681
vicepresident@mistletoeheights.org	
Secretary	
Valerie Ewing	817.791.9535
secretary@mistletoeheights.org	
Treasurer	
Jeri Jo Blackmon	817.923.4393
treasurer@mistletoeheights.org	
Newsletter Editor	
Hannah Parks	217.886.0398
newsletter@mistletoeheights.org	

Volunteers

Historic Preservation Committee	
Roger Ross	817.372.6865
Susan Willis	817.924.4000
Street Rep Captains	
Melissa Kohout (East side)	817.313.1419
Rosaline Eastepp Takes (West side)	817.207.9750
Welcome Baskets	
Kathy Jo Rogers	817.688.0905
Denise Semple	817.733.0404
Advertising Manager	
advertise@mistletoeheights.org	
Newby Park	
Vacancy	
Email Moderator	
Richard Yantis	817.924.2857
Webmaster	
Scott Ewing	214.403.7762
Historian	
Luke Ellis	817.339.2459
Yard of the Month	
Claudia Camp	817.924.5193

Street reps (listed by blocks)

East of Forest Park	
2200 W. Rosedale South	
Lysta Haynes	817.675.4163
2200 Irwin	
Gary Willis	817.924.4000
2100/2200 Mistletoe Blvd.	
Melissa Kohout	817.313.1419
2100/2200 West Magnolia	
Colleen Shutt	214.455.9097
2200 Harrison	
Mark Philpot	817-681-6681
2100 Harrison Ave.	
Chris & Sawyer Taylor	817.201.5320
2100 Mistletoe Ave.	
Pat Hale	817.924.5263
2200 Mistletoe Ave.	
Richard & Christi Yantis	817.924.2857
2100/2200 Edwin	

Katrina Pittman	817.921.2221
2100 Weatherbee	
Adam & Anne Weiskittel	817.653.2912
2200 Weatherbee	
Adam & Anne Weiskittel	817.653.2912
2100 Morphy	
Ben Connelly	
Forest Park Blvd.	
Steve McReynolds	817.926.7955

West of Forest Park

2300 W. Rosedale South	
Jamie Qualls	Phone # TBA
2300 Irwin	
Steve McReynolds	817-926-7955
2300/2400 Mistletoe Blvd.	
Lisa Stewart	817.924.9666
2300 West Magnolia	
Susan Pressley	817.923.6061
2300/2400 Harrison	
Robert DeVargas	817.923.9393
2300 Mistletoe Ave.	
The Fullers	817-291-1298
2300 Edwin	
Janis Arwin	
1100 Clara	
Marc & Kathy Jo Rogers	817.923.3304
1200 Clara	
Bryce & Laura Docker	bryedocker@hotmail.com
1100 Buck	
Martin Herring	817.923.3843
1200/1300 Buck	
Irene Stemple	817.926.6546
1100 Mistletoe Drive	
Mark and Kellye Neuweiller	
1200-1414 Mistletoe Drive	
Meralen & Gerry Tyson	817.926.5909
2300 Mistletoe Drive	
Chris Fershtand	817.923.8422
Carol Benson	817.921.4000

Neighborhood police officer

Marshall Meyer	817-999-8057
----------------	--------------

MHA yearly memberships

Voluntary dues are \$15, \$25, \$50 or whatever you can afford. Your dues help pay for this newsletter, the Mistletoe Heights phone directory and many neighborhood functions. Please make your check payable to Mistletoe Heights Association. Mail to: Jeri Jo Blackmon, 1408 Mistletoe Drive.

Free classified ads

As a MH resident, you get one free classified ad. Please submit copy by the 15th of the month. Notify the editor at 817.201.1909 or email: newsletter@mistletoeheights.org.

Editorial policy

Articles and letters to the editor are welcomed. To be published as written, letters must be addressed to the editor, signed, and include a phone number. Anonymous letters will not be published. Articles may be submitted for publication, signed or unsigned, subject to approval and editing.

Contact information helps, especially if we have questions for you. Letters to the editor are limited to a half-page (approximately 350 words).

Please send email to: newsletter@mistletoeheights.org.

Advertising information

To place an advertisement or for actual mechanical sizes, please email: advertise@mistletoeheights.org
 Business-card size \$25
 1/4 page \$50
 Half page \$100
 Full page \$200
 Pre-printed inserts \$100
 8 1/2 x 11
 Deadline for ads, payment and artwork is the 15th of the month.