

# MISTLETOE EXPRESS

A FRONT PORCH COMMUNITY

October - November 2016  
[www.mistletoeheights.org](http://www.mistletoeheights.org)

## President's Corner

### Critters causing trouble: mosquitoes and coyotes

By Josh Lindsay



A wet end to our summer has blessed us with lots of growth and wildlife. We treasure Mistletoe Heights as a refuge of mature trees and no shortage of surrounding green spaces and wildlife.

Of course, we like to think of it as a place of genteel urban civilization as well.

Let's keep a few things in mind to

strike a balance.

Officials at Fire Station No. 8 at West Rosedale Street and 12th Avenue have trapped mosquitoes infected with West Nile virus.

The mosquito-killing frost is nowhere near, and rain is in the forecast.

We must be vigilant about any standing water in our neighborhood. These mosquitoes need only a little stagnant water to breed.

Plant containers and backyard clutter are invitations to these bloodsuckers.

Continued on Page 2



Workers install a new donated baseball backstop in Newby Park.

## If walls could talk ...

### The story of one house in Mistletoe Heights, which once was part of the Edwards Ranch

By Bill Martin and Tom Richey

Did you ever wonder about the history of the land that became Mistletoe Heights back in the time when Fort Worth was little more than an army outpost?

Well, it's a long, convoluted and well-documented story.

This is a tale of the origins of Mistletoe Heights, which was once a part of the sprawling Edwards Ranch, and of one residence in the neighborhood - 2300 Edwin St.



2300 Edwin St. in the 1920s

In 1854, only five years after the establishment of Fort Worth at the confluence of the West and Clear forks of the Trinity River, the state of Texas deeded 640 acres of land southwest of the fort to Lemuel Edwards. This land was added to the Edwards Ranch, which consisted of thousands of acres.

Edwards Ranch Road just off Chisholm Trail Parkway is, of course, one of the last remaining vestiges of this site.

The 640 acres deeded in 1854 included the Harris Survey, which had within its perimeter what is now Mistletoe Heights.

In 1869, with the passing of Lemuel Edwards, probate court awarded half of the holdings to his widow, Elizabeth, and the other half split equally among Ambrose and Martha Creswell, Charles O., Cynthia and Lemuel Jr.

Cynthia, who later married William Burford, received the southern half of the Harris Survey land.

In 1887, Cynthia deeded part of the land to the Fort Worth  
Continued on Page 6

# President's Corner

Continued from Page 1

For the sake of our neighbors (especially the little ones), please be careful to eliminate any place where mosquitoes can thrive.

Second, we have had a horrible spate of cat killings in the neighborhood. Coyotes are the most likely suspects, which are frequently seen skulking around Mistletoe Heights.

We're looking into the option of trying to trap the perpetrators, but, given our location, that's a stopgap measure at best.

Any predators that we remove will only be replaced by others if the neighborhood environment allows them to thrive.

The best measures turn out to be steps that any good neighbor should take anyway.

Keep your fences in good shape, keep your animals under control, secure your garbage, don't leave pet food outside, let everyone know if you see coyotes, and make coyotes feel unwelcome if possible.

If you have a cat, do what you can to keep it close and protect it.

Coyotes are probably the least of their worries if they are allowed to roam. It's a pity we can't trap and relocate dangerous drivers.

One more item: I don't know if you've seen it yet, but Newby Park has a new baseball backstop. Both the donor and the neighbor who made this possible want to keep a low profile. But if you happen to know anyone involved, please offer a big thanks. For a park its size, Newby gets a real workout, and I'm sure this upgrade will be appreciated for many years to come.

All the best.

**Josh Lindsay**

**[president@mistletoeheights.org](mailto:president@mistletoeheights.org)**

**2238 Mistletoe Blvd.**

## Join the Mistletoe Heights email list

To subscribe to the Mistletoe Heights Residents mailing list, go to [mistletoeheights.org](http://mistletoeheights.org), click on "Email list" and look for "Subscribing to Residents." Enter your name and email address, and then click "Subscribe." Note: You may need to add [residents-bounces@mistletoeheights.org](mailto:residents-bounces@mistletoeheights.org) to your address book

to receive emails. If you have questions or concerns, contact [moderator@mistletoeheights.org](mailto:moderator@mistletoeheights.org).

Check out our website: [mistletoeheights.org](http://mistletoeheights.org)

Friend us on Facebook: [facebook.com/mistletoeheights](https://facebook.com/mistletoeheights)

## Get connected

Get connected. Be more engaged. Please share with us your experiences of good will in the neighborhood to [newsletter@mistletoeheights.org](mailto:newsletter@mistletoeheights.org) and write me at [president@mistletoeheights.org](mailto:president@mistletoeheights.org). Here are some ways to find out what's going on in the neighborhood.

— Josh Lindsay, MHA president



Facebook Chat Room [www.facebook.com/groups/mhneighbors](https://www.facebook.com/groups/mhneighbors)

NextDoor page [www.mistletoeheights.nextdoor.com](http://www.mistletoeheights.nextdoor.com)

Webpage [www.mistletoeheights.org/contacts](http://www.mistletoeheights.org/contacts)



# Mark your calendars!



Tuesday, Oct. 4: The 32nd annual National Night Out, from 5 to 8 p.m. Turn on your porch lights and spend some time outside with your neighbors.

Friday, Oct. 7: Fall Movie Night at 7 p.m. at Newby Park. A family-friendly movie will be shown. Free popcorn, but bring your own drinks.

Saturday, Oct. 8: Historic House Research Class, 1 to 2 p.m. at Fort Worth Library, 500 W. Third St., in the Tandy Lecture Hall. Carol Roark, author and historic preservationist, will talk on "How to research the history of your home." Learn how to use online and archival resources to determine when your home was constructed, who lived in it and who built it.  
<http://fortworthtexas.gov/library/programs/archives-in-action.html>

Sunday, Oct. 30: Halloween pumpkin judging begins around dusk. The elite group of gourd judges will determine the best real, carved pumpkins and the winner will receive an all-expenses-paid trip to Transylvania, or something else. See related information in the newsletter.

Saturday, Nov. 12: Keep Fort Worth Beautiful! America Recycles Day at La Grave Field from 9 to 11 a.m. Dispose of all manner of junk and trash in a responsible way. See related information in newsletter.

Tuesday, Nov. 15: Quarterly members' meeting at the home of Dexter and Deborah Jung, 2340 Mistletoe Blvd., from 7 to 8:30 p.m. This is the last meeting of the year and the one at which we elect officers for the coming year. It is important to have as much neighborhood representation as possible. Please try your best to be there and make your voice heard. Refreshments will be served.

Sunday, Nov. 20: Streetlight Bow-Tying Party at the home of Susan and Gary Willis, 2237 Irwin St., at 2 p.m. for about an hour. (The Cowboys game will be on!) Come lend a hand to prepare decorations for our streetlights and share fellowship and snacks with your neighbors.

Sunday, Dec. 4: Neighborhood Christmas party at the home of Scott and Valerie Ewing, 1414 Mistletoe Drive, from 5 to 8 p.m. Bring a side dish and utensil to serve it with and enjoy the festive season and fabulous food with your neighbors.

**Best dinnerware selection in the DFW area!**  
**Replacement China & Crystal.**  
**Decorative Dinnerware from elegant to whimsical!**  
**NEW Spode Woodland, Johnson Brothers, Waterford, Fostoria, Lenox, Wedgwood, Haviland, Noritake, Fitz & Floyd, Mikasa, Royal Doulton and more!**





**Dishes Encore**

**3811 Rutledge Street (at 3900 Vickery Blvd.) Fort Worth, TX 76107**

DINNERWARE@DISHESENCORE.COM **817-744-8548**

Usually open Tue-Sat, 10 AM - 5 PM

## Mistletoe Heights Association Supporters

As of September 19, 2016

***Names in bold print have contributed since the last newsletter***

### Magnolia

Barrow, Wade & Brook	Ellis, Luke & Terri	McReynolds, Steve & Kathy
Blackmon, Jeri Jo	Ettinger, Alan & Phyllis	<b>Mitchell, Mark &amp; Susie</b>
Brizendine, Graham & Heather	Ewing, Scott & Val	Muller, Mark & Lynn
Buck, Chandry	Greenslade, Joe	<b>Northern, Will &amp; Elizabeth</b>
Cosby, John & Gay	Hale, Tom & Pat	Parrish, Bill & Sue
<b>Csanadi, Randy</b>	<b>Hellberg, Jon &amp; Susan</b>	<b>Pereth, Hank &amp; Linda</b>
<b>Davis, Jeff</b>	Lowry, Bruce & Lisa	Smith, Flavious & Melanie
Dierker, Charlie & Kathy	<b>Martinez, Andre &amp; Estela</b>	Sybesma, Richard & Wendy
		Tyson, Gerry & Meralen

### Holly

Asher, Garland & Betsy	<b>Effertz, Stan &amp; Lynda</b>	<b>Maugans, Clay &amp; Cross, Deanna</b>
<b>Blanton, Alex &amp; Wendy</b>	Gill, Suzanne	McKeever, Kent
Brooks, Eric & Cindy	Gunn & Camp, David & Claudia	<b>Myers, Mike &amp; Diane</b>
Cetto, Allen & Cheri	<b>Harris, Thomas &amp; Melanie</b>	<b>O'Connell, Mike &amp; Carole</b>
Coy, Taylor & Claire	Hotard, John & Susan	Reed, Gaye
<b>Dempsey, Donna</b>	Jourde, Austin & Maia	<b>Sevadjian, Margaret</b>
DePrang, Brian & Amy	<b>Jung, Dexter &amp; Deborah</b>	Thompkins, Geselle
Eastepp, Rosaline	Martin, Bill	Willis, Gary & Susan

### Mistletoe

<b>Brous, Nancy</b>	Gosling, Lynn	<b>Matlock, Gray &amp; Mary</b>
<b>Brennan, Mike &amp; Neely, Denise</b>	Graham, Gerry & Kelli	<b>McQuerns, Sam &amp; Martha</b>
Cates, Karen	<b>Gude, Richard &amp; Judith</b>	<b>Ramsay, Nancy</b>
<b>Cole, Willard &amp; Aline</b>	<b>Hager, James &amp; Tammy</b>	Rubinson, Ellen
Docker, Bryce	<b>Haynes, Barry &amp; Lysta</b>	Ryan, Susan
Dowdle, Roy	Hobson, Jack & Nancy	<b>Teague, Joy</b>
Estes, Jason & Courtney		

**Thank you neighbors, for your contributions to our neighborhood association!**  
**You have donated \$4,505 so far this year.**



2016 Levels of Giving  
Magnolia - \$100 and up  
Holly - \$50 to \$99  
Mistletoe - Up to \$49



EXPERT WORKMANSHIP  
QUALITY MATERIALS  
PROFESSIONAL SERVICE

**A SQUARE DEAL**  
- SINCE 1964 -

WWW.CITYROOFING.COM  
817-738-1756

**Jeri Jo Blackmon**  
Professional Tax Services

**817-923-4393**

Email: [JeriJo@charter.net](mailto:JeriJo@charter.net)  
Enrolled Agent licensed by the IRS

1408 Mistletoe Drive  
Fort Worth, TX 76110

Cell: 817-925-7833  
Fax: 817-924-7733

# Volunteers needed

We need more volunteers! Help us make this neighborhood better.

Are you new to the neighborhood and would like to get involved? Here are a few great ways, and you will get to meet a lot of interesting neighbors!

**Historical Preservation Committee:** We are looking for any interested people to join the Historical Preservation Committee. Help us ensure the integrity of the architecture in our community.

**Advertising manager:** We are looking for someone to solicit and manage ads from local businesses. You would work closely with the treasurer. It would require only a few hours a month.

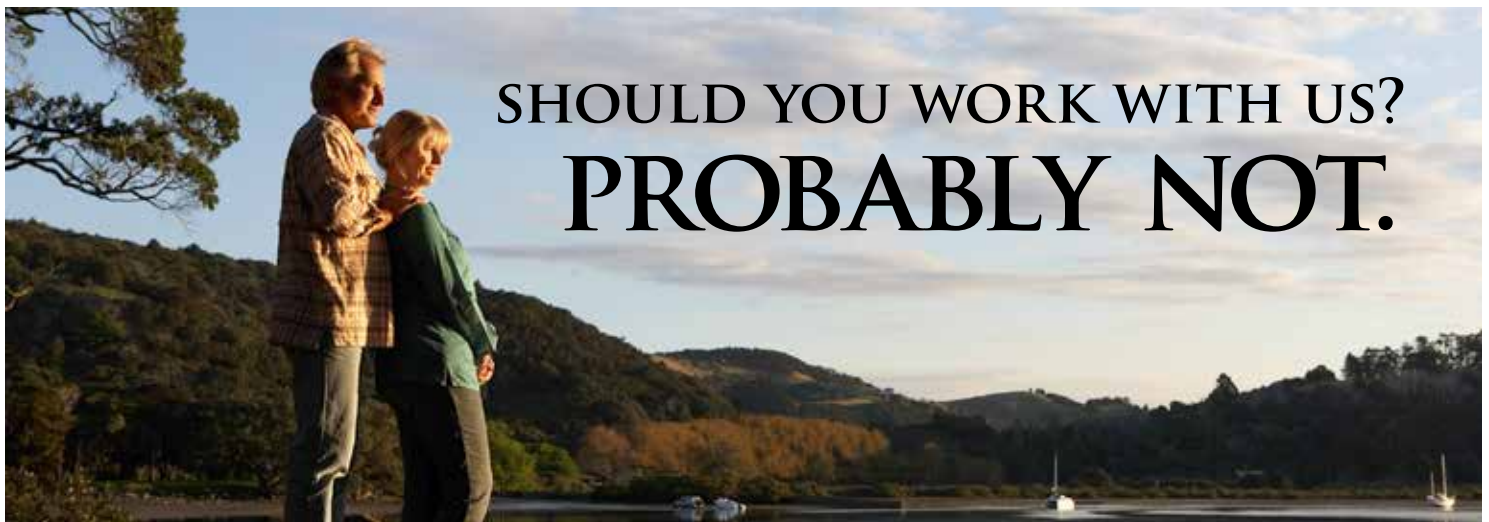
**Social chairperson:** Are you a "people person"? We are looking for someone to help coordinate neighborhood events. Most of them already have established leaders, so it would just be a matter of coordination. Other duties would involve finding locations for members' meetings and the Christmas party and providing snacks, drinks and tableware for such meetings. All costs would be reimbursed.

**Newby Park Gardening Committee:** We are looking for a group of people to work on a rotating basis to care for the plants and flowers in Newby Park. Rosaline Eastepp Takes will provide information about the specific duties involved and will manage the schedule.

**Wine and Walk leader:** We are looking for a person or family to provide a gathering place and starting point for Wine and Walk. Wine and Walk is a fun, informal gathering of Mistletoe Heights residents, including adults, children, strollers and pets, for a leisurely stroll through the neighborhood for 30 to 45 minutes while sipping our favorite beverages. It usually takes place on Sunday evenings at about 7 p.m. in nice weather. It's a wonderful way to meet new and old neighbors and all we need is someone's driveway to start from. Hosts do not need to provide refreshments; it's BYOB. Hosts may need to send out a reminder email regarding dates or cancellations.

**Street representatives:** We are looking for street representatives for the 2200 block of Weatherbee Street and the 2100 block of Harrison Avenue. The street reps deliver the newsletter to the individual houses on their respective blocks every other month (February, April, June, August, October, December). The bundle will be delivered to your house for distribution. This job takes only about 15-20 minutes and would be much appreciated.

Contact Chad Jung if you are interested,  
[vicepresident@mistletoheights.com](mailto:vicepresident@mistletoheights.com).



## SHOULD YOU WORK WITH US? PROBABLY NOT.

Our firm isn't for most people. If you thrive on discovering the latest "hot-stock", prefer trusting your gut over sticking to a strategy, or believe in chasing returns by jumping in and out of the market, there are plenty of other firms you can call.

We pride ourselves on selecting clients who have clear goals, realistic expectations, and a cool head. We work hard to protect our clients from making emotional decisions that can negatively impact their long-term investment success. At Charles R. Green & Associates, Inc., we don't sell products; we create strategies.

 **CHARLES R. GREEN**  
 & ASSOCIATES, INC.  
*Personal and Business Financial Planners*

*Plan. Build. Protect.*

Call us! 817-348-8700  
 1612 Summit Ave, Suite 350  
 Fort Worth, TX 76102  
[www.charlesrgreen.com](http://www.charlesrgreen.com)  
[invest@charlesrgreen.com](mailto:invest@charlesrgreen.com)



## If walls could talk ...

Continued from Page 1



Contemporary view of 2300 Edwin St.

and Rio Grande Railroad Co. for completion of a railroad line across the northern border of her land.

William Burford died in 1888 and

Cynthia married Maloney Sisk.

In 1901, Cynthia and Maloney deeded part of the land to the Red River Texas and Southern Railroad, which may have created the tracks that run between Forest Park Boulevard and Eighth Avenue.

In 1909, the Sisks deeded land to public use for streets and utilities. In 1910, the southwest corner of the Harris Survey was deeded to family members, including Lela Darrah, followed by the deeding in 1911 of rights to the Northern Texas Traction Co., which owned and operated the trolley cars in Fort Worth.

In 1912, 38 acres, and in 1917, 26.44 acres were given to public use by the Sisks, Burfords and Darrahs. This may be the land that encompasses Forest Park and the zoo.

Also in 1917, with the death of Lela Darrah, her share, and, more specifically, Lot 3, Block 4 of the Forest Park Addition, was turned over to R.R. Darrah, who survived her.

Lot 3, Block 4 is the property at 2300 Edwin St.

A plat document shows the lot relative to Forest Park Boulevard and an avenue called Lowry, which is currently Mistletoe Avenue.

At the time, Forest Park Boulevard had a jog in it at Lowry Avenue. At some later date this was changed to the "S" curve that we currently have.

The house behind the 2300 Edwin house, to the right in the Page 1 photo, once stood on that corner. The foundation partially remains.

In 1919, this lot went to C.M. Elliott, along with restrictions concerning race, as well as restrictions concerning the sale of intoxicating beverages.

From the Elliotts, it passed to a Mrs. Drake and then to a C.L. Mobely, always at a goodly profit.

In 1923, it was purchased by F.B. McConnell, who put in place curbs, guttering and, through an order of the Fort Worth Commissioners, paid his share in the paving and improvement of Edwin Avenue, now known as Edwin Street, from Jerome Street to Buck Avenue.

Mistletoe Drive did not exist as we currently know it.

In 1924, the land was purchased by E.A. Shotts, a local businessman, who also had permits to build seven houses on Irwin Street. (It's not known whether he actually carried through with his plan).

Shotts owned an electrical contracting business, which

became very successful. Everything from lighting to the new-fangled radios were at your disposal if your house was wired and receiving the magic of electricity.

His company also wired non-residential properties, one of which was the First United Methodist Church just off Fifth Street in Fort Worth, where a young couple named Bill and Helen Martin were married in December 1952.

Shotts' wife, Hannah, and daughter Ruth built the house at 2300 Edwin in 1927. It was a large, gracious house befitting an up-and-coming business star in burgeoning Fort Worth.

The rear apartment in the garage was rented to a man named Preston Jones during this early time. Jones apparently assisted the family in some manner as there was a buzzer connecting the house to the apartment.

There was a large coal-fired furnace in the basement to provide heat. It was controlled by a series of dry-cell batteries, another wonder of electricity.

Unfortunately, Shotts was diagnosed with a terminal illness in 1936 and, after carefully seeing to the future needs of his family, decided to end his life.

Daughter Ruth was married and living on Magnolia Avenue at the time. Her son was 5 and due to start his first day at Lily B. Clayton Elementary School that fateful morning when Hannah called Ruth to tell her of her father's suicide.

The grandson missed his first day of school and the memory unfortunately remained, as related in later years to the current homeowner.

Hannah lived in the house for the next 32 years, renting out rooms to lodgers, as can be seen from the 1940 Census.

She passed away in 1968 at age 90, and daughter Ruth was the sole beneficiary.

A couple who had spent some time in Fort Worth had just returned from Taiwan, where husband Bill Martin had been stationed with the Air Force.

He was reassigned to Carswell Air Force Base, where he retired from active duty in 1969.

At about that time, Ruth decided to sell the family home. Bill and Helen knew the area well as they had been living in Ryan Place and were happy to buy the home, in fact becoming its second owners.

They and their three children moved in. The children attended Daggett Elementary and then Paschal High School and then went off to lives of their own.

Many good memories reside in that house, many good years of pleasant living in a house where cattle once roamed.

It's still a great neighborhood.

*EDITOR'S NOTE: The signature headline on the article above is taken from a show that used to appear on HGTV. It told the stories of old houses and the people who lived in them. Judging from many conversations at neighborhood gatherings, we're betting that many interesting stories could be told by the walls of homes in Mistletoe Heights, with the help of their owners, of course. "If walls could talk ..." has been an occasional fixture in the Mistletoe Express. If your home has an interesting history, or was occupied by interesting people, other than the current occupants, please send your submissions to: [newsletter@mistletoeheights.org](mailto:newsletter@mistletoeheights.org).*

# Yard of the month: 1410 Mistletoe Drive

By Bruce Horn



The recipients of the October Yard of the Month award are Mark and Susie Mitchell at 1410 Mistletoe Drive.

Mark is an attorney and gardener and Susie is a homemaker and photographer. They have four grown children and an Airedale terrier, which is a champion show dog: Primavera Rose, aka Mia.

Mark loves gardening. In the back yard he has a greenhouse and delights in growing vegetables.

The home already had some of the big features in its landscape when the Mitchells moved into the neighborhood in December 2012. However, the Mitchells have made significant changes, all of which are improvements.

Looking at their home from the street and going from left to right, you will see many interesting and beautiful plants in well-laid-out beds.

There is a hedge made up of palmetto, loropetalum, Indian hawthorn and althea (also known as Rose of Sharon). In front of the hedge is a long, sweeping bed planted with lantana, roses, heather and angelonia (in white, lavender and purple).

Closer to the house are a huge magnolia and some more beds. One of the very best things about the way they've planted the beds is their continued use of the same plant materials.

That provides continuity – it ties everything together in a very pleasing way. (You may recall that in the winter their extensive plantings of the same color of pansies did the same thing.)

Framing the entrance to the house are two large, white crape myrtles and the ginormous Italian cypress trees.

If you were to look on the right side of their front porch, you would see an interesting tray containing all sorts of succulents. On the north end of that porch is a small bed with yew in it.

On the porch is a lovely pot containing a pigmy neanthe bella palm.

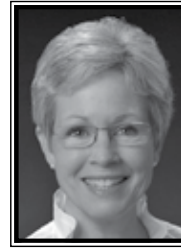
On the northern side of the driveway, leading to the back yard, are a slew of dwarf hameln grass bunches, along with some of the dark pink crape myrtles, which are also in the island described below. The beds right in front of the porch have huge loropetalum and Indian hawthorn in them.

The circular drive and the front sidewalk frame an island planted with oleander, rosemary, dark pink crape myrtle and windmill palm. In the island are more loropetalum (the bushes

Continued on Page 14

## PLEASE DON'T FENCE ME IN

In case you didn't know, I'm more than just a Mistletoe Heights' area Realtor—I represent buyers and sellers all over Fort Worth, Tarrant County and beyond.

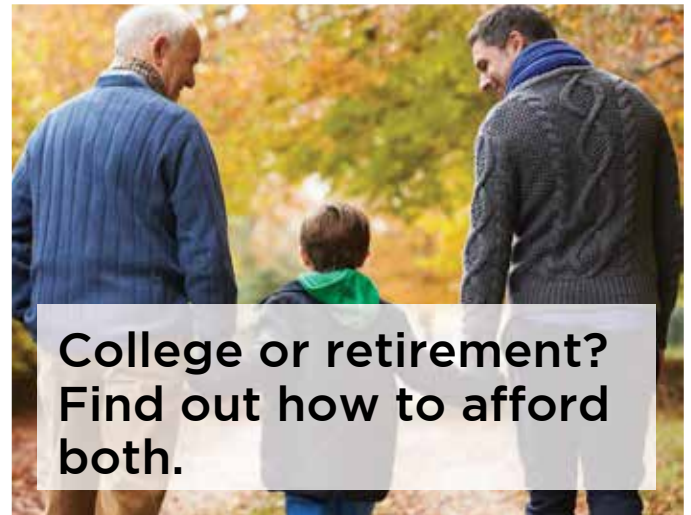


*Call me with all your real estate needs & questions.*

*Gaye Reed*



817-688-1952  
gaye.reed@cbfw.com



**College or retirement?  
Find out how to afford both.**



**Bruce C Border, CFP®**

Financial Advisor

2453 Forest Park Boulevard  
Ft Worth, TX 76110  
817-926-8056

[www.edwardjones.com](http://www.edwardjones.com)  
Member SIPC

**Edward Jones**  
MAKING SENSE OF INVESTING

# Don't lose your head to save a minute!

## You need your head! Your brains are in it!

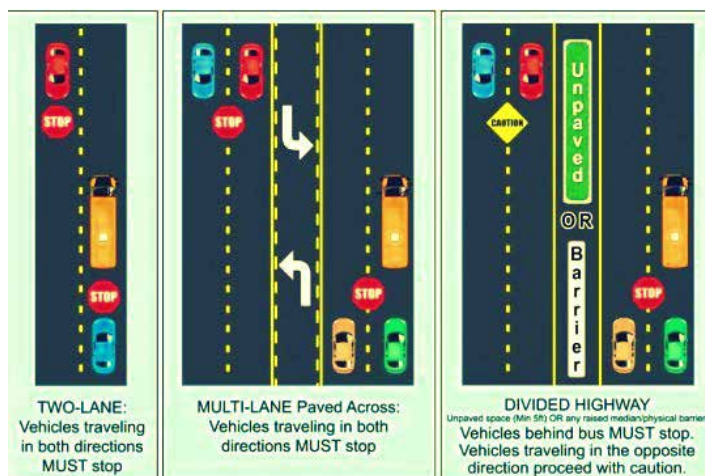
By Bruce Horn

For those of us old enough to remember, the headline on this article was taken from a series of signs for Burma Shave that I saw on a highway many, many years ago. It was true then and it's true now.

My wife and I have lived in Mistletoe Heights for 29 years. We raised our children here, and are currently raising our granddaughter in what is now our ancestral family home.

We have seen many changes in our wonderful neighborhood. Some have been good, some have not.

What I write about today could be what I call "Mistletoe Heights Exceptionalism."



By that I mean that many residents here apparently see themselves as exceptions to the common sense rules and the statutes that apply to driving in our neighborhood.

I'm addressing three major issues: Requirements for drivers pursuant to school buses, excessive speed and stop signs. There are some real problems that need to be addressed.

We live at the intersection of Buck Avenue and Mistletoe Boulevard. The school buses stop at this intersection in the morning and afternoon, picking up and dropping off kids, the precious children of residents here.

What I've observed far too many times is that certain drivers willfully ignore the law.

When a school bus is stopped with its lights flashing and its STOP sign extended, all drivers are required to stop and wait until the bus lights are turned off. This means all drivers, regardless of which direction they're going.

Far too many times, I've seen drivers go on their way without waiting for the kids to finish getting on or off the bus. I've witnessed the bus driver blowing the horn, really laying on it, trying to call the driver's attention to the fact that the driver should be stopped and waiting, as is the law.

And I've witnessed, more often than not, these drivers going on their merry way, without concern for the safety of the kids.

Kids are not necessarily cognizant of what other vehicles in the vicinity are doing.

Are we really in such a hurry that the safety of our kids is not important? Every year, many school kids are hurt or killed by drivers who didn't follow the regulations to stop and remain stopped until the bus driver has indicated it's OK for traffic to continue on.

Do we need to wait until one of our own little angels is hurt or killed before we decide that maybe, just maybe, the statutes written to protect our kids are actually important? God help us if we are that selfish!

The moral of this story is simple: When a school bus is stopped and its lights are flashing, we need to stop and remain stopped until the kids are finished with what they're doing and the bus driver turns off the lights!

Next: Excessive speed. I've noticed that a few residents have in their yards large red and white signs that read: "Drive Like Your Kids Live Here."

Well, our kids do live here! And yet every day and evening some drivers barrel down the street at a high rate of speed. At that speed, they could never stop their cars in time to avoid hitting a child who might be in the street or simply walking/running across the street.

Again: These are children I'm writing about. We cannot, nor should we, expect them to always be aware of vehicles coming down the street.

If we're old enough to drive, we are, in effect, the adults in the situation and we should willingly accept the responsibility to drive like our kids live here, whether or not we actually are parents.

Are we really in such a hurry that our own needs take priority over the safety of our neighborhood kids? If we think that saving 30 seconds is more important than public safety, we are guilty of the worst kind of self-absorbed, selfish behavior!

The moral of this story is simple: The speed limit in residential neighborhoods is 30 mph. That's it! No wiggle room. And much of the time we should all be driving even slower than that. Kids are unpredictable. We don't know when one might run into the street.

And I don't know if you've ever witnessed a child being run over by a car. I have. It's not a pretty sight. And it's something that can easily be prevented by us, by simply obeying existing speed limit laws.

Finally: Stop signs. There's been some good research on why people don't stop at stop signs. The best I found was based on interviews with drivers who were seen blowing through stop signs.

Continued on Page 9



Continued from Page 8



Answers given when drivers were asked, “Why didn’t you stop at that stop sign?”

“No one was there.”

Many drivers will pass stop signs late at night because fewer drivers are on the road. Just because people aren’t normally on the road at certain times doesn’t mean you should assume that you’re the lone

late-night driver.

If this were something that happened only late at night, it would be one thing. However, far too many people ignore stop signs during the day. I guess they think their own needs/desires are more important than anything else’s.

I don’t know what they’re thinking! But if you’re in a hurry, perhaps you should leave earlier, rather than shave time off your drive by blowing through stop signs.

“I was distracted,” some might say. Distractions can be caused by cellphones, radios, passengers, external factors or exhaustion, causing you to take your mind or eyes off of the road.

Sometimes, especially at night or while driving unfamiliar routes, drivers completely miss stop signs or other road signs. And if a stop sign is obscured by bushes or trees, a call to the city will result in a crew promptly showing up to trim back that foliage.

“I was in a hurry.” Impatience can often play a part in risky driving practices. The temptation to shave a few minutes off your commute by speeding, rolling through stop signs or just plain ignoring traffic laws is strong and can be deadly. I repeat: deadly!

“I slowed down.” Simply slowing down at a stop sign is not sufficient. In many cases, stop signs are placed at intersections where visibility may be impaired (either on the road you are on or by drivers of cars approaching on other roads), so it’s vital to come to a complete stop so you and other drivers have time to react.

And who among us is really able to say, “I’ve never made a mistake”? We’re just people. We make mistakes.

What could happen if you run through a stop sign?

You could strike another car that has the right of way. If you don’t come to a complete stop, you risk striking another vehicle, which may be rightfully entering the intersection before you.

Another car could strike you. Depending on the direction of the oncoming vehicle, this could put you, your passengers or

people in the other vehicle in great danger.

You could hit a pedestrian or biker. This is especially dangerous at night or in areas of low visibility, where stop signs are especially vital. Make sure to drive in a safe and predictable manner to help pedestrians and bikers cross intersections safely.

You could be ticketed for failure to stop. This is often a violation that could cause you to lose your license.

All of us should always come to a complete stop at every stop sign. They are there for a reason! The city planners and traffic engineers who decided where to put stop signs were not fools. In fact, ol’ grandpa and grandma were actually pretty smart ... and they knew what they were doing when they established the existing traffic laws.

A few years ago, the Fort Worth Police Department stationed some officers in our neighborhood to catch traffic. A slew of citations were issued. It turned out that 100 percent of those ticketed were neighborhood residents. Yup, 100 percent!

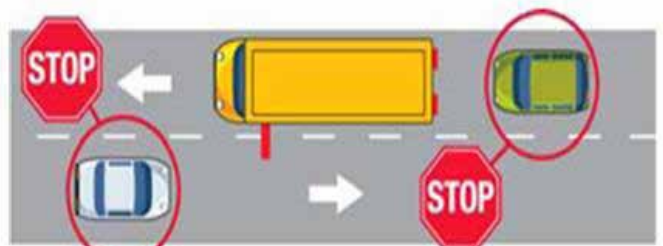
In closing, I’ll make a few more observations: I’ll soon be 70, and I’m not naïve enough to think that I can control the actions of others. And I know that drivers will do what they want to do, regardless of what I’ve written.

But if my article causes even a few people to rethink their driving habits, it will have been a success. So I beg you, I beseech you, I implore you to think of others and their safety while driving through the neighborhood.

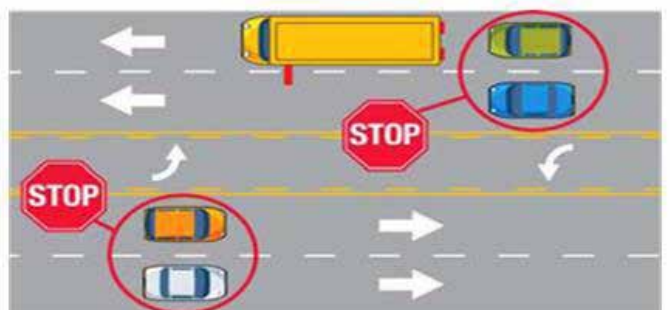
It is we alone who can make a difference.

We can, by our own behavior and habits, make the phrase “Mistletoe Heights Exceptionalism” mean what it ought to mean: That our neighborhood is exceptional and is full of exceptional people who are mindful of and attentive to the well-being of their neighbors ... and, even more important, of the neighborhood children.

#### **EXAMPLES OF WHEN DRIVERS MUST STOP**



**TWO LANE ROAD**



**ROADWAY DIVIDED ONLY BY LEFT-TURN LANE**

## Neighbors who have passed

Mistletoe Heights lost three neighbors in recent weeks – two who lived long and fruitful lives and one whose promise was cut short far too early.



Drew Medford

### Drew Medford

Andrew “Drew” Peter Medford, 18, a star baseball player for Paschal High School and a top prospect for Texas Christian University’s team, died in an auto accident Aug. 18.

Drew was born March 24, 1998, in Fort Worth. Although he left this life all too early, Drew left his mark on his family, friends and the community of Fort Worth.

He was known for his sense of humor, humility and his empathy for others. He consistently communicated love to his family and friends.

Drew was a member at Christ Chapel Bible Church and volunteered in various ministries.

He was also known for his passion and dedication to baseball. At Paschal High School, he was a three-year varsity starter.

In his junior year, he was voted Utility Player of the Year and, as a senior, All-District MVP. In addition, he was an Honorable Mention All-American, as well as First Team All Texas.

After playing baseball at Paschal, he was ranked as one of the top prospects nationally and signed with TCU.

Guided by the principle of Philippians 4:13, “I can do all things through Christ who strengthens me,” Drew attained his lifelong dream of becoming a Division 1 athlete.

Drew was preceded in death by his brothers, Patrick Anthony and David Wayne, who died at birth; his grandparents, Nancy and Claude Medford; his aunt, Nancy Hunt; and his uncle, Claude Medford Jr.

Survivors: His father and mother, Dr. David and Nancy Medford; siblings Michael, Julia, Carly, Adrienne and her husband, Silas Scott Grant; grandparents Don and Ruth Gaviglio; his aunts and uncles, Maureen and Mick Gaviglio, Kathryn and Steve Kenney, Anne and Drew Case, for whom he is named; his niece and nephew, Grayson and Cape Grant; and many cousins.

Drew’s parents and the rest of the family wish to express their thanks to Mistletoe Heights and the broader community for the love and support extended to them over Drew’s death:

“The loss of our dear son has been hard for us to accept, but we are learning to smile again as this is how Drew preferred life.

“We are humbled by the outpouring of love and support from an incredible community. Our entire family thanks you – each and everyone one of you. Your care and concern has helped immeasurably. David and Nancy Medford and family.”

### Louise Nora Duncan

Louise Nora Duncan, who was a hair stylist and ran her own salon for many years in Austin, passed away Aug. 31 at her home at 2337 Harrison Avenue. She was 95.



Louise Nora Duncan

Friends and longtime neighbors who live on Harrison Avenue and around the Triangle expressed deep sadness upon the death of Louise.

“She was an awesome neighbor and friend. I will miss her a great deal,” said Carol Spencer, who lives across the street.

“Her smiles, her welcoming waves, and her day-to-day knowledge of our neighborhood made her an important asset to those of us who knew and loved her. We are sad, knowing that we will not get to share a warm hug or laugh with her any more.”

Randy Jaecks, Louise’s loving nephew and longtime Mistletoe Heights resident, cared for his aunt full-time for the last seven years.

Randy wrote in an email:

“Aunt Louise and Uncle Wayne E. (“Andy”) Duncan were married on June 14, 1975, and moved into their home at 2337 Harrison Ave. that same month in 1975. He passed away on Jan. 28, 2000. She continued to live in Mistletoe Heights until her death.

“She was a wonderful and kind neighbor with a beautiful spirit who enjoyed sitting on her front porch in her rocking chair. At one time she was a beautician and owned her own beauty shop in Austin before moving to Fort Worth in 1975. The neighborhood and her family have lost a treasure, and she will be greatly missed.”

Louise was born in Taylor, Texas, on Feb. 25, 1921, to Herman and Louise Krueger Kruse.

She loved being around her family and friends. She enjoyed reading, going out to dinner and visiting with her friends and neighbors.

Graveside services were held Sept. 3 at the Taylor City Cemetery. Pastor Kerri Veit officiated. In lieu of flowers, contributions may be made to Prince of Peace Lutheran Church, P.O. Box 1182, Taylor, Texas 76574.

### Georgia Belle Higgs Ragland

Georgia Belle Higgs Ragland, who had lived in Mistletoe Heights for 81 years, since 1935, died Aug. 9 in Waco. She was 102.

Neighbor Gary Willis said that Georgia Belle lived in three different homes in Mistletoe Heights, including residences on West Rosedale Street South and on Irwin Street.

A graveside service and memorial service were held in Fort  
Continued on Page 11

## Neighbors who have passed

Continued from Page 10  
Worth.

Georgia Belle was born June 9, 1914, in Thurber, the daughter of George Wyly Higgs and Della Davis Eubank Higgs. She graduated from Central (now Paschal) High School and Brantley Draughon Business College.

She was the oldest living member of Broadway Baptist Church, where she had been a member for more than 90 years. She enjoyed working with the pre-school children at the church.

She was active in her daughter's school, Lily B. Clayton Elementary, serving as room mother, PTA member and library volunteer.

In addition to her parents, she was preceded in death by her husband of 56 years, B.A. "Rags" Ragland Jr.

She is survived by her daughter, Mary Jane Ragland Dennison, three grandchildren and three great grandchildren.

Should friends desire, memorials may be given to the Humane Society of North Texas, 1840 E. Lancaster Ave., Fort Worth 76103.

## Streetlight Bow-tying Party!

**When:** Sunday, Nov. 20 (Sunday before Thanksgiving)

**Where:** The home of Gary and Susan Willis at 2237 Irwin St.

**Time:** 2 p.m.

Please come help us get the neighborhood ready for Christmas. Many hands make this a fun chore! We're counting on your help.

Starting at 2 p.m., you can come and leave when you please.



The Dallas Cowboys game will be on. If a lot of neighbors show up, it will take about an hour. If not, it becomes a chore.

Join us, please!

Refreshments will be there! Please tell your neighbors!

## Great gourds afire!

By Steve McReynolds

The mornings are once again becoming crisp, and fall is threatening.

Before you turn around, it will be time for the annual Pumpkin Carving Contest.

The rules for this event are simple:

- The night before Halloween, which means Sunday, Oct. 30, this year, the elite gang of gourd judges hits the streets to judge this year's offerings.
- All real, carved pumpkins are judged soon after dusk.
- The grand prize winner will get either an all-expenses-paid trip to Transylvania or a \$50 prize (to be decided later).

- All honorable mentions get a fabulous writeup in the newsletter (i.e., an honorable mention).
- Plan your gourds' grimaces now. Get the whole family involved. And remember: Judging occurs the night before Halloween, and Styrofoam or plastic pumpkins do not count in the judging.

To new neighbors: I should point out that trick-or-treaters flock to Mistletoe Heights from all over town, so be prepared to deliver the hospitality and treats.

And keep an eye out for the Mistletoe Halloween Street Band on its annual ramble through the neighborhood.



Here were some of the contenders from last year. Photos by Jim Peipert



## Minutes of the MHA Aug. 16 members' meeting

Officer attendees: Josh Lindsay, Chad Jung, Jeri Jo Blackmon, Scott Ewing, Mary Ellen Peipert

Guest speakers: Neighborhood Police Officer Matt McClellen  
Secretary: Scott Ewing

Location: The home of Abe and Kim Factor, 1300 Mistletoe Drive

7:20 p.m.: Call to order by President Josh Lindsay

7:21 p.m.: Josh introduced NPO Matt McClellen, who has been with the Fort Worth Police Department for about 23 years. He passed out business cards:

Robert McClellen, Robert.McClellen@fortworthtexas.gov  
817-372-2418

Joshua Caprio, joshua.caprio@fortworthtexas.gov. 817-858-8609

The officer reported that bike thieves have been busy. When cars have been burgled, they usually have been unlocked. Keep chargers and phones out of sight. Question: Should one report a burglary even if nothing is stolen? Yes, always report something. The police often find goods that have not been previously reported. The officer also stated that one thief can break into 25 to 30 cars per night. Bottom line: Always report break-ins. Sydney Keith is no longer whom we should contact, as NPO McClellen has taken his place. Our other officer is Josh Caprio, who also helps with the neighborhood. It was mentioned that we have been receiving crime reports and that it is much appreciated by residents.

7:26 p.m.: Minutes from the May 17 neighborhood meeting were reviewed and approved.

7:27 p.m.: Officer reports:

Lily B. Clayton Elementary School raised \$106,000 in its recent fundraising drive. Our neighborhood provided more donations than Berkeley Place. A letter was read from auction leaders at Lily B. thanking us for a \$500 dollar donation.

Vice President Chad Jung introduced himself and asked for attendees to introduce themselves.

Treasurer Jeri Jo Blackmon presented the treasurer's report. The Mistletoe Heights Association has a bank balance of \$31,000. Total income was \$5,920, expenses \$3,566 for a net income of \$2,354. Jeri Jo reminded everyone of how to donate.

Question: Are we being billed for water on the berm? Yes, we are. It started about two months ago. Question: Are water trucks using our water? Robert Camacho will look into the current status. So far this year, water has cost us only \$87. The water spigot was removed, but water trucks may still be

using our access. The berm has drip irrigation, so we will not see sprinkler heads.

Robert Camacho gave a berm report. Graffiti has been a problem. Sometimes there has been a delay in getting it addressed by the city. He said we will continue to report graffiti. Apparently, there has been a Pokemon Go stop at the top of the trailhead. Officer McClellen reports that not all graffiti is on city property. Some is on property maintained by the Texas Department of Transportation and some on property maintained by the North Texas Tollway Authority. The city has been helping temporarily with graffiti abatement. Officer McClellen to help with contact phone numbers for graffiti abatement at TXDOT and NTTA.

Traffic Committee: Josh reported that at the May 17 meeting we approved a new traffic committee, but the members were not present at this meeting.

Welcome Baskets Committee: Seven new neighbors have moved into Mistletoe Heights since the last newsletter.

Development Committee: Has not met since last members' meeting. The apartments project next to Newby Park is still in its early stages, with no structural work yet done. The committee is planning to approach District 9 City Councilwoman Ann Zedah to ask that overnight parking be eliminated to prevent long-term parking on Jerome Street near Newby Park. The development will provide only a bare minimum of parking for residents. Question: When is the project supposed to be finished? Date unknown at this time. Work continues on the site and the foundation. No final end date is known at this point. Parking will be limited on the surface and there will also be some garages.

7:45 p.m.: Old business: The primary effort since the last meeting has been filling in sidewalk gaps. Currently, there are no sidewalks along the 2300 block of Mistletoe Drive and the south side of the 2200 block of Mistletoe Boulevard. Also, some pointed out that there are no streetlights, and that should be addressed. A car was hit while parked on that street and whoever did it has not been found. The city thinks it has found bond money available to add sidewalks on one side. Surveys have been sent out to nearby property owners. There is some resistance to adding sidewalks. Some people voted yes, some voted no, and some have not responded. The city reports it will consider putting in sidewalks, but will not repair existing broken sidewalks. Question: Who owns the property where sidewalks are installed? Answer: It is city property due to easements. The city will fix driveways and will try to move landscaping but recommend residents move their own landscaping. It was noted that street corners  
Continued on Page 13



Pouring the foundations for Magnolia on Rosedale,  
a 35-unit residential complex at Jerome and  
Rosedale streets

Continued from Page 12

will have ramps in compliance with the Americans with Disabilities Act. A motion was made that we support the sidewalk effort. Approved. It was reported that some people do not want the sidewalks due to their appearance. There was also a discussion about the lack of sidewalks being a safety issue.

7:55 p.m.: New business: Berkeley Place will be renting Forest Park Pool, with Mistletoe Heights joining in, on Saturday, Aug. 20, between 7 and 9 p.m. Everyone is invited to attend. It was noted the pool was updated about three years ago and it's very nice. Admission is free. (Update: The event was canceled because of stormy weather.)

8 p.m.: A resident, who lives on West Rosedale Street South near Forest Park Boulevard mentioned that a nearby property is overgrown with weeds and that suspicious activity has been observed. A person was also found passed out in the front yard. It turns out that the owner has about 100 properties around the city. Officer McClellen said that any such activity should be reported to the police and that we should also report code violations. He reminded us to use the smartphone app myFtWorth. It uses GPS to help report problems. The non-

emergency police number is 817-335-4222. The officer recommended that we ask for a callback with each report.

8:15 p.m.: Steve McReynolds, who has been organizing the streetlight decorations for the neighborhood for many years, said he would like to stop doing it and asked for help. This will be his last year. Josh also reported that Newby Park needs a volunteer. It was recommended that we ask Steven Alford to help with volunteer efforts.

8:20 p.m.: A volunteer to host the annual Christmas party was requested. The Ewings volunteered their house at 1414 Mistletoe Drive this year. The venue was approved.

8:21 p.m.: Meeting adjourned.

JOIN US IN CELEBRATING THE PRESENTATION OF  
**THE 2016 BRIT INTERNATIONAL  
AWARD OF EXCELLENCE IN CONSERVATION**

*Honoring*  
**CARTER P. SMITH**  
EXECUTIVE DIRECTOR, TEXAS PARKS & WILDLIFE DEPT.  
CHAMPION OF CONSERVING TEXAS' NATURAL RESOURCES

**THURSDAY, OCTOBER 20, 2016**  
AT THE WORTHINGTON RENAISSANCE FORT WORTH HOTEL  
RECEPTION AT 6:30 PM | DINNER AT 7:00 PM

TO RESERVE THESE COVETED INDIVIDUAL SEATS OR CORPORATE / PRIVATE  
TABLES, VISIT [WWW.BRIT.ORG](http://WWW.BRIT.ORG) OR CALL 817-332-2748

**BRIT**  
BOTANICAL RESEARCH  
INSTITUTE OF TEXAS  
BRIT.ORG



# Yard of the month: 1410 Mistletoe Drive

Continued from Page 7



with the red leaves), dark pink salvia, yucca and a great looking desert willow tree.

The colorful plants in the island and in beds closer to the house, the ones with maroon and green foliage and the ones with small, maroon flowers, are lava rose coleus and red satin coreopsis, respectively.

I can't praise highly enough the Mitchells' extensive use of those two plants!

There is a temptation for amateur gardeners to use as many different kinds of plants as possible. However, in massive plantings the usual result is a jumble of mismatched things with no sense of unity ... no continuity.

A lot of mixed plants and/or colors work well in pots, but not so much in the ground. The Mitchells' heavy use of the coleus and coreopsis achieves an effect that is usually found only in professionally designed landscapes, but the Mitchells did it themselves. (Note: Mark is a gardener!)

Another thing I really like about their landscape is the way they have allowed their loropetalum to achieve natural shapes.

The Austrian architect Friedensreich Hundertwasser had a principle behind his work, summed up with his phrase: "The only uncreative line is the straight line." Anyone familiar with Hundertwasser's work knows that he practiced what he preached.

Though there are applications where a nice, trimmed hedge looks great with straight lines, most of the time the end result of straight-line trimming is a boxy look that's simply unnatural!

Aside from crystals, there are not many straight lines in nature, are there? Allowing the loropetalum to grow into natural shapes is not only highly attractive, but it is also much healthier for the plants!

So, if the reader can't tell by now, I'll say again that I really, really, really like the overall effect the Mitchells have achieved with their landscape.

The right mix of larger plants, the extensive use of certain small, colorful plants, and the combined combinations of colors all come together to form an exceptional landscape. Take a closer look at it the next time you're walking or driving by. It's worth the time and energy!

*Author's note: As we come to the end of a calendar year the Yard of the Month article, like many of our plants, will go dormant until springtime. I welcome any feedback, questions and/or concerns you might have about this particular article or any of the others I've written over the last two-plus years. Write me at [brucehorn@charter.net](mailto:brucehorn@charter.net). See you in April!*



**Sharon Summers McClung**  
**Owner/Designer "Jewels Elite"**  
**HOLIDAY JEWELRY SHOW**  
 (Celebrating Halloween – come for treats!)  
**For my Mistletoe Heights**  
**neighbors, friends and family**

**Saturday, October 29<sup>th</sup>**  
**10:00am – 3:00pm**  
**2232 Edwin St.**  
 (home & studio)

Hosted by: Cheri Cetto

[www.jewelselite.com](http://www.jewelselite.com)  
[jewelselite@gmail.com](mailto:jewelselite@gmail.com)







### Just Sold

2229 Stanley  
2622 5th Avenue  
2429 Shirley  
2917 Alton

### Just Listed

3105 Westcliff West  
2132 Park Place  
2323 Edwin

### Under Contract

6404 Locke  
860 North Bailey  
3407 Westcliff South

### **When asked about Ruth, her clients' remarks included:**

*"Ruth's skills could guide anyone in buying or selling a home. She is a true delight."*

*"Our best real estate experience ever! We don't know how we got so lucky!"*

*"The combined process of selling and buying is overwhelming, but Ruth guided me through the process. She provided honest information and always made sure I was informed."*

*"We enjoyed working with Ruth on selling our home. Her professionalism on every level was exemplary. We especially appreciated her regular communication."*

*"Listing with Ruth Story gives you the advantage of her skilled marketing and energetic networking. She will deliver the best price for your home in the shortest time."*

*Selling a home is personal. My first priority is listening to what is most important to you, maximizing your equity, and helping you move toward the next chapter as smoothly as possible. Call, text or email today for more information on how I can help you achieve your real estate goals!*

Ruth Story  
817.992.9232  
askRuthStory@gmail.com  
RuthStoryOnline.com

**kw**  
KELLER WILLIAMS



# Thanks to good neighbors!

- Thank you to Matthew Hardell for mowing the grass at the baseball diamond at Newby Park.
- Thank you to Steve McReynolds for chairing, for the past 20-plus years, the annual Bow-Tying Party, where volunteers create the Christmas decorations for our neighborhood streetlights! An incredible job! Thanks also to Steven Alford for stepping up to take over the duties of this important job.
- Thank you to Nikki, Eric and Callan Rustad for providing the popcorn for Movie Nights in Newby Park.
- Thank you to the Traffic Committee – Courtney Estes and Taylor Coy – with positive input from Neighborhood Police Officer Josh Caprio. Due to their efforts, the city will soon install a four-way stop sign at the intersection of Jerome Street and Mistletoe Avenue to calm traffic resulting from the new apartment complex at Jerome and Rosedale streets.

If you know of any other “unsung heroes,” please contact [newsletter@mistletoeheights.org](mailto:newsletter@mistletoeheights.org) so we can include them in the next newsletter.

Thank you to all who help make our neighborhood better.



# Welcome to new neighbors, as of summer 2016

Cynthia McGinley

2226 Weatherbee St.

Daughter Aliza Mitchell and granddaughter Zoe, age 2½

Anne and Adam Weiskittel

2345 Mistletoe Ave.

Son Lucas, 10; daughter Stella, 7

Carolyn and Mark Range

2200 W. Magnolia Ave.

Son Lewis, 18 months

Eric and Christina Knott

2304 Irwin St.

# Support our advertisers

The officers of the Mistletoe Heights Association encourage you to support the businesses that advertise in our newsletter. These organizations pay to be in our newsletter and support our neighborhood. Their business also makes

this publication possible. Without them we would not be able to provide printed newsletters to every household in the neighborhood free of charge.

# What would you like to see in the newsletter?

We want your feedback! What topics would you like to see in the newsletter?

Send us your suggestions: [newsletter@mistletoeheights.org](mailto:newsletter@mistletoeheights.org).



Mistletoe Heights, as a “front porch community,” would like to welcome all new residents.

If you know of any new neighbors, or if you’re a new neighbor, please contact our association president, Josh Lindsay, or our newsletter editor, Mary Ellen Peipert.

They will need your name, address, names of family members, age and gender of children and your contact information.

They will then pass your information on to our incredible duo of ladies, Kathy Jo Rogers and Denise Semple, of the Welcome Basket Committee, who would like to present you with a basket of goodies to welcome you to the neighborhood.

Josh Lindsay  
president@mistletoeheights.org

Mary Ellen Peipert  
newsletter@mistletoeheights.org  
817-926-4117

## Advertising submission process

All ads must be paid for by the 10th of the month previous to the month in which the ad will appear. Artwork for all ads should also be submitted by the 10th of the month prior.

Artwork should be emailed to: [advertise@mistletoeheights.org](mailto:advertise@mistletoeheights.org). Should you have any questions, please email [advertise@mistletoeheights.org](mailto:advertise@mistletoeheights.org).

## In the city

Police non-emergency number: 817-335-4222

Crime updates available to citizens at any time:  
[fortworthpd.com](http://fortworthpd.com). Go to crime information, then crime mapping.

Community engagement liaison: For our neighborhood, contact Jacob Browning, 817-392-2045; [jacob.browning@fortworthtxas.gov](mailto:jacob.browning@fortworthtxas.gov)

Link to city online pothole reporting form:  
<https://cityoffortworth.wufoo.com/forms/pothole.report>

Link to code compliance issues and to report graffiti:  
[fortworthtexas.gov/codecompliance/myFtWorth](http://fortworthtexas.gov/codecompliance/myFtWorth)

Link to report animal issues, control, adoption:  
[fortworthtexas.gov](http://fortworthtexas.gov); or call 817-392-1234.



Link to request permit for garage sale:  
[Fortworthtexas.gov](http://Fortworthtexas.gov); or call 817-392-2222.

For travel health information and inoculations, Call Tarrant County Public Health Dept., Travel Health Services, 1101 S. Main St., Fort Worth, TX. 76104. 817-321-4707

Fort Worth Leash Law:  
<http://fortworthtexas.gov/animals/laws>

Fort Woof Dog Park:  
<http://fortwoof.org>

Smart phone app: myFtWorth



# Free classified ads

## PET PORTRAITS

Holidays are coming! Birthdays, too!! Birthdays too! Portraits of your four-legged family members. Visit my website for examples. [www.mkohouthorseportraits.com](http://www.mkohouthorseportraits.com) or call 817-313-1419. Questions welcomed!

## TUTOR

K-3rd grade. Caring, encouraging, experienced (12 years) certified elementary school teacher is offering tutoring this summer. Contact Kathy Jo Rogers at 817.688.0905 or [kathyjorogers@sbcglobal.net](mailto:kathyjorogers@sbcglobal.net).

## 26 YEARS EXPERIENCE IN TEACHING

Tutoring Pre-K-2nd Grade. Is your child falling behind? Need some one-on-one attention? Don't want your child to lose what they've learned over the summer? I can help! Call Joy Ridler at 817.637.5541.

## COMPLETE PROPERTY RENOVATION

Demolition, cleanup, specializing in historic home renovations, painting, wallpaper. Contact Jeff Cuningham at 817-988-7113.

## HOME WANTED

We'd like to buy a home - from an owner - no agents, please! 817-732-3836

## HANDYMAN YOUR NEIGHBORHOOD

No job is too small. I live on Edwin and have local references. Have over 30 Years experience in remodel. Call Terry 817.454.1795 free estimates!!

## TAX PREPARATION

Jeri Jo Blackmon, former IRS Agent and current Enrolled Agent licensed by the IRS will prepare and e-file your individual or business tax returns. Also, as a QuickBooks Pro Advisor, training is available for individuals or businesses who want to improve their skills or learn new skills using QuickBooks accounting software.

Contact Jeri Jo Blackmon at 817-923-4393 or email [JeriJo@Charter.net](mailto:JeriJo@Charter.net). 1408 Mistletoe Drive.

## MISTLETOE HEIGHTS PET SITTERS

MISTLETOE HEIGHTS PET SITTERS is now booking for your vacation, or any other time. References available on request. [Mistletoeheightspetsitters.com](http://Mistletoeheightspetsitters.com) or 817-247-2870



SARAH T. DAVIS

817.233.6564

[sarahtdavis@kw.com](mailto:sarahtdavis@kw.com)



Licensed REALTOR®

Your Mistletoe Heights

Neighbor Since 2004

**kw**  
KELLER WILLIAMS.

## Keep Fort Worth beautiful! America Recycles Day Shred it, recycle it, donate it La Grave Field Saturday, Nov. 12

**Who:** You! Residents of Fort Worth. Bring a water bill or other proof of residency.

**When:** Saturday, Nov. 12, from 9 to 11 a.m.

**Where:** La Grave Field, 301 Northeast Sixth St. Signs will direct you there.

**What:** Up to five 40-pound boxes of personal documents, light bulbs and tubes, batteries of all types, electronics, fire extinguishers, clothing and shoes, single-use plastic bags (including the wrapping on rolls of paper towels or beverage containers).

**Why:** To keep Fort Worth beautiful

**How:** Load up your stuff, get in your car, go!

### FAMILY PHOTOGRAPHY BY DIANA BRANDENBERG

At-home mom would love to take your family photos! I will come to you, portrait session or special events. Just call and we'll get those perfect photos for the Christmas card! Call 214-734-9140.

### Early Childhood Music and Movement

Mistletoe Musikgarten ( [www.MistletoeMusik.com](http://www.MistletoeMusik.com)) has returned to its roots, right here in our neighborhood. We offer music and movement classes for infants, toddlers, pre-schoolers and kinders. We sing, dance, and play simple instruments in our parent-child classes. Music and movement classes prepare your child for future learning successes. Contact Carol Spencer [joyous579@gmail.com](mailto:joyous579@gmail.com) ~ 817.927.3240

### PIANO LESSONS

For beginners and intermediates.  
Mary Smith, 2300 W. Magnolia Ave.  
817-927-8876.

### THE NEST

Fully furnished one-bedroom/bath garage apartment available for one night to one month short-term stays. Text 318-243-0157 or email [convilles@gmail.com](mailto:convilles@gmail.com)

### LEARN TO SWIM LESSONS

With emphasis on Olympic strokes. Contact Richard Sybesma, Head Swim Coach, TCU Box 297600, Fort Worth, TX 76129; 817-257-5646 or 817-257-7963

### ESTATE SALE SERVICES

Estate Sales & Appraisals  
Experienced, reliable estate sales in and out of Mistletoe Heights since 1992. Certified Appraiser, International Society of Appraisers. Appraisals for insurance, estate evaluations, donations; whatever your needs. Contact: Terri Ellis, Mistletoe Estate Sales, 817-926-9424 or email [tquilt@mac.com](mailto:tquilt@mac.com)

### VINTAGE SALES

Estate Sales Vintage Sales has been helping people liquidate estates since 1992. Don't throw anything away before you talk to us! We can help you. Anne Bourland (817-919-0270) [apbourland@aol.com](mailto:apbourland@aol.com) John Bourland (817-307-6173)

### HARPIST

Sally Sledge ministers on the harp as a worshiper, psalmist and vocalist. She has recorded two CDs: "Return to Your Rest" and "Cherished Times". She is available to play for home groups, church events, Bible studies, weddings, funerals, dinner parties or any special occasion. For more information and song samples, you may access her web site at [www.sallysledge.com](http://www.sallysledge.com).

### PET SITTING

At-home mom who LOVES animals would love to help take care of yours! Please call 214-734-9140.

CHOOSE A  
FORT WORTH BRAND



**REAL ESTATE BROKERAGE  
PROPERTY MANAGEMENT**

1253 W. Magnolia Ave., Ft. Worth, TX 76104 | 817.920.0000  
[northernrealtygroup.com](http://northernrealtygroup.com)



**North Fort Worth Historical Society's  
11th Annual**

***Saints and Sinners Tour***

**Oakwood Cemetery**

701 Grand Ave.  
Fort Worth, TX

**October 28—30, 2016**

**Twilight Tours**

Friday, 28th and Saturday, 29th at 6:30pm  
\$20.00 by **Reservation Only**  
(Reservations taken beginning Sept. 1)

**Walking Tours**

Saturday and Sunday at 1pm and 3:30pm  
**\$10.00—adults ~ \$5.00—Students/Children**  
Pay Admission at the Gate the Day of the Tour.

For Reservations or information call 817-625-5082



## Helpful phone numbers, emails, addresses and websites

### City information

City Code violations	817.392.1234
City of Fort Worth	
817.392.2255	
fortworthtexas.gov	
Police—nonemergency	817.335.4222
Garage sale permits	817.392.7851
Graffiti abatement	
817.212.2700	
Lily B. Clayton Elementary	817.922.6660
schools.fwisd.org/clayton	
Paschal High School	817.814.5000
paschalhs.org	
Historical Preservation	
Liz Casso	817.392.8037
liz.casso@fortworthtexas.gov	
Southside Preservation Hall	
817.926.2800	
Hallyes@earthlink.net	
southsidepreservation.com	
The T/Longhorn Trolley	817.215.8600
the-t.com	
Trinity Railway Express	817.215.8600
trinityrailwayexpress.org	
City Council District 9	
Ann Zadeh	817.392.8809
district9@fortworthtexas.gov	

### MHA officers

officers@mistletoeheights.org	
President	
Josh Lindsay	817.927.0323
president@mistletoeheights.org	
Vice President	
Chad Jung	817.291.5849
vicepresident@mistletoeheights.org	
Secretary	
Valerie Ewing	817.791.9535
secretary@mistletoeheights.org	
Treasurer	
Jeri Jo Blackmon	817.923.4393
treasurer@mistletoeheights.org	
Newsletter Editor	
Mary Ellen Peipert	817.926.4117
newsletter@mistletoeheights.org	

### Volunteers

Historic Preservation Committee	
Roger Ross	817.372.6865
Street Rep Captains	
Melissa Kohout (East side)	817.313.1419
Rosaline Eastepp Takes	817.207.9750
(West side)	
Welcome Baskets	
Kathy Jo Rogers	817.688.0905
Denise Semple	817.733.0404
Advertising Manager	
advertise@mistletoeheights.org	
Newby Park	
Vacancy	
Email Moderator	
Richard Yantis	817.924.2857
Webmaster	
Scott Ewing	214.403.7762
Historian	
Luke Ellis	817.339.2459
Yard of the Month	
Bruce Horn	817.526.4339

### Street reps (listed by blocks)

East of Forest Park	
2200 W. Rosedale South	
Lysta Haynes	817.675.4163
2200 Irwin	
Gary Willis	817.924.4000
2100/2200 Mistletoe Blvd.	
Melissa Kohout	817.313.1419
2100/2200 West Magnolia	
Colleen Shutt	214.455.9097
2200 Harrison	
Aaron Torkelson	817.907.5533
2100 Harrison Ave.	
Vacancy	
2100 Mistletoe Ave.	
Pat Hale	817.924.5263
2200 Mistletoe Ave.	
Richard & Christi Yantis	817.924.2857
2100/2200 Edwin	
Katrina Pittman	817.921.2221
2100 Weatherbee	
Tanya Dohoney	817.313.6674

### 2200 Weatherbee

Vacancy	
2100 Morphy	
Vacancy	
Forest Park Blvd.	
Steve McReynolds	817.926.7955

### West of Forest Park

2300 W. Rosedale South	
Kimberly Helixon	817.927.4641
2300 Irwin	
Sue Duvall	817.926.8714
2300/2400 Mistletoe Blvd.	
Lisa Stewart	817.924.9666
2300 West Magnolia	
Susan Pressley	817.923.6061
2300/2400 Harrison	
Robert DeVargas	817.923.9393
2300 Mistletoe Ave.	
Vacancy	
2300 Edwin	
Grant Pannell	817.924.0051
1100 Clara	
Marc & Kathy Jo Rogers	817.923.3304
1200 Clara	
Bryce & Laura Docker	bryedocker@hotmail.com
1100 Buck	
Kate Herring	817.923.3843
1200/1300 Buck	
Irene Stemple	817.926.6546
Mistletoe Drive	
Meralen & Gerry Tyson	817.926.5909
2300 Mistletoe Drive	
Chris Fershtand	817.923.8422
Carol Benson	817.921.4000

### Neighborhood police officers

Sidney Keith (West)	817.944.1038
David Cloninger (East)	817.992.0181

### MHA yearly memberships

Voluntary dues are \$15, \$25, \$50 or whatever you can afford. Your dues help pay for this newsletter, the Mistletoe Heights phone directory and many neighborhood functions. Please make your check payable to Mistletoe Heights Association. Mail to: Jeri Jo Blackmon, 1408 Mistletoe Drive.

### Free classified ads

As a MH resident, you get one free classified ad. Please submit copy by the 15th of the month. Notify the editor at 817.201.1909 or email: newsletter@mistletoeheights.org.

### Editorial policy

Articles and letters to the editor are welcomed. To be published as written, letters must be addressed to the editor, signed, and include a phone number. Anonymous letters will not be published. Articles may be submitted for publication, signed or unsigned, subject to approval and editing.

Contact information helps, especially if we have questions for you. Letters to the editor are limited to a half-page (approximately 350 words). Please

send email to:  
newsletter@mistletoeheights.org.

### Advertising information

To place an advertisement or for actual mechanical sizes, please email: advertise@mistletoeheights.org  
Business-card size \$25  
1/4 page \$50  
Half page \$100  
Full Page \$200  
Pre-printed inserts \$100  
8 1/2 x 11  
Deadline for ads, payment and artwork is the tenth of the month.