



By Josh Lindsay

Two details struck me at November's MHA meeting.

First, City Councilwoman Ann Zadeh told a story about a neighborhood meeting she attended in southwest Fort Worth where a longstanding neighborhood association was considering disbanding for lack of participation.

She persuaded them to continue because she believes neighborhood associations are an essential component in city representation.

In another presentation, our association treasurer, Jeri Jo Blackmon, described our financial situation as positive. But she noted a drop in the number of neighborhood residents who pay dues.

As of the November meeting, 78 households had participated in the annual membership drive. This is out of a total of about 500 households in our association area – about 15 percent.

Two November events on my mind are related to these anecdotes from the meeting. The first is the midterm congressional elections. We've just experienced a midterm election marked by plenty of rhetoric about "the people" and "mandates."

While our neighborhood can boast a voter turnout of about 50 percent, the turnout in Tarrant County overall was about 37 percent.

## PRESIDENT'S CORNER

***"Nothing makes you more tolerant of a neighbor's noisy party than being there."***

-- Franklin P. Jones, 1908-1980, Philadelphia reporter, PR executive and humorist



New MHA President Josh Lindsay with his wife, Lili, and daughters Mateen (left) and Mitra

At this percentage, a politician needed only 19 percent of eligible voters to win a race. This means that smaller and smaller groups chart the course for everyone else.

While our association is set up as nonpartisan, its influence can have more of a direct impact on our quality of life than most of the politicians in the midterm election.

A neighborhood association with high membership numbers can have greater influence at the city level. More important, a higher number of involved people means more effective communication among our residents – the core goal of our association.

There have been divisive issues in our neighborhood in the recent past and there will be others in the future. It can be bumpy, but it is imperative to get everyone involved. If you live here, you have a place in our association.

The thought of discussing delicate issues brings me to another topic for this time of year, Thanksgiving. In some ways neighbors are like family – and not just in the warm, fuzzy relationships we've been lucky to find here in Mistletoe Heights.

Continued on Page 4

### Inside This Issue

Page 2-4 - Making Ready for the Holidays, Making Merry in the Neighborhood, House History, Next Neighborhood Meeting

Page 5-9 - Most Improved Yards, Decorating Street Lamps, Thank You Neighbors, In the Cultural District, Volunteers Needed

Page 10-14 - MHA Officers, Christmas Tree Pickup, MHA Meeting Minutes, MHA Supporters

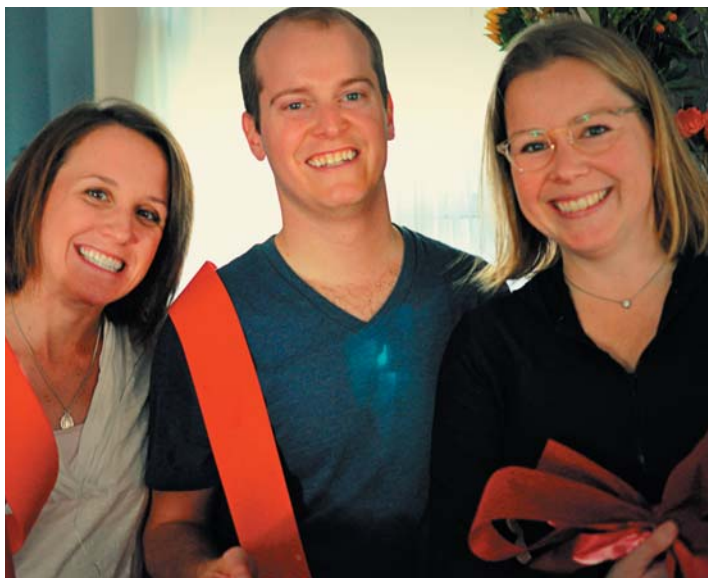
Page 15-16 - Classifieds, Helpful Numbers



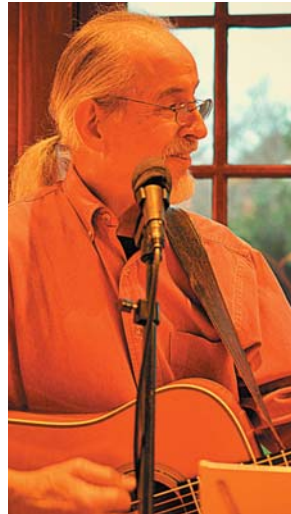
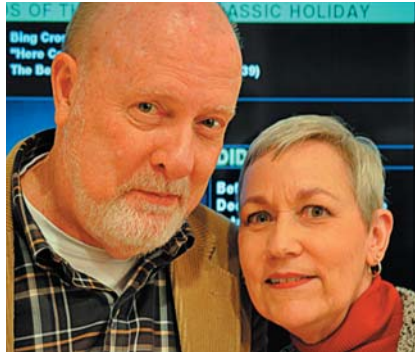
# Making Ready For The Holidays



Every year Mistletoe Heights neighbors gather to tie the bows and cut the ribbons and green garlands that decorate our streetlight poles. This year's party was held Nov. 23 at the home of Gary and Susan Willis at 2237 Irwin St.







This year's annual neighborhood Christmas party was held Dec. 7 at the home of Mark and Susie Mitchell at 1410 Mistletoe Drive. Many thanks to the Mitchells for going above and beyond in hosting the party.

## Making Merry In The Neighborhood





# President's Corner

Continued From Page 1

You don't get to choose your relatives or neighbors as you do your friends. Also, both family and neighbors see ups and downs in your life that friends might not be exposed to.

The benefits of this can be seen in the diplomacy around the Thanksgiving table. Every year Uncle Dan will be at the Thanksgiving table, and every year I might choose to diplomatically discuss the Aggies' chances or the weather rather than the situation in Congress or the true nature of the Trinity.

Even so, if I were in trouble, Uncle Dan would be there to help me out, and vice versa. Similarly, in our neighborhood association we might leave certain discussions at the door, but try to come together to advance measures that can benefit us all. The more residents at that big table, the greater chance of both a beautiful spread and an effective association.

My goals as association president can be distilled into two statements that are expressed in our bylaws: To encourage improved communication, friendship and civic spirit among neighbors, and to work closely with city officials and other organizations to promote initiatives that will benefit the neighborhood as a whole.

Monetary goals are not what guide our membership drive. Our primary goal is increasing participation and communication.

I'm not saying that donations don't help, but it's more important to have a representative group of people who play a part in guiding this neighborhood.

If you are willing to go beyond simple membership and want to be directly involved with any aspect of our association activities, feel free to call or send an email and I'll put you in touch with the right people.

At whatever level, your input is crucial to the continuing success of the Mistletoe Heights Association and the social health of our neighborhood as a whole.

Join us at the table.

Josh Lindsay  
2238 Mistletoe Blvd.  
president@mistletoeheights.org

Get connected. Be more engaging. Please share with us your experiences of good will in the neighborhood to newsletter@mistletoeheights.org and write me at president@mistletoeheights.org. Here are some ways to find out what's going on in the neighborhood.

1. Facebook Chat Room  
[www.facebook.com/groups/mhneighbors](http://www.facebook.com/groups/mhneighbors)
2. NextDoor page [www.mistletoeheights.nextdoor.com](http://www.mistletoeheights.nextdoor.com)
3. Webpage [www.mistletoeheights.org/contacts](http://www.mistletoeheights.org/contacts)

—Josh Lindsay, MHA president

Jeri Jo Blackmon  
Professional Tax Services

817-923-4393

Email: [JeriJo@charter.net](mailto:JeriJo@charter.net)  
Enrolled Agent licensed by the IRS

1408 Mistletoe Drive  
Fort Worth, TX 76110

Cell: 817-925-7833  
Fax: 817-924-7733

## Next Neighborhood Meeting

### Mark Your Calendars!

The next neighborhood meeting will be held on Tuesday Feb. 17, from 7 to 8:30 pm at the home of Mary Ellen and Jim Peipert, 2217 Harrison Ave.

It turns out that Feb. 17 is Mardi Gras, so king cake will be served.



## House History

Want to look up deed information on your house in Mistletoe Heights? Here's how to do it online:

1. Go to <http://access.tarrantcounty.com/en.html>
2. Click the Online Services tab at the top and choose Deed History Card Search.
3. In Subdivision Name, type Mistletoe Heights and press Go button.
4. Choose your appropriate block number and scroll down to see the old deed cards for each lot. You can find your block number by going to the Tarrant Appraisal District website and looking up your property.

This provides great information about the previous owners, values and taxes from the pre-computer era.

-- Josh Lindsay

# Most Improved Yards



**By Bruce Horn**

As I noted in the November issue of the Mistletoe Express, I'll be writing during the winter months about the most improved yards in our neighborhood.

Because dormancy is the major feature of any landscape during the winter, I thought it appropriate to shift my focus. Two yards will be featured each month for having made significant improvements in their landscapes.

The first one is the old apartment building at 1211 Jerome St. We have resided in Mistletoe Heights for more than 27 years and the changes this summer at that address were noteworthy!

Years ago, the building was somewhat seedy and run down. A few years back, a new owner made improvements that really made a difference in the outward appearance.

This past summer, one of the residents put in a nice front yard. I apologize sincerely for not having the person's name to publish. Those efforts paid off in a really nice look – for the first time since we've lived in Mistletoe Heights.

Our thanks and commendations go out to the unnamed gardener whose work made such a difference!

The second yard worthy of a "most improved" mention is the Brock residence at 1206 Mistletoe Drive.

Dan and Lisa bought that lovely old home and put lots of work into it before they moved in. What they have done in front has made it look better than it ever has.

They had a nice circular drive put in, had the lawn redone with St. Augustine grass, and had lots of Asian jasmine planted both in the parkway and in the beds close to the house.

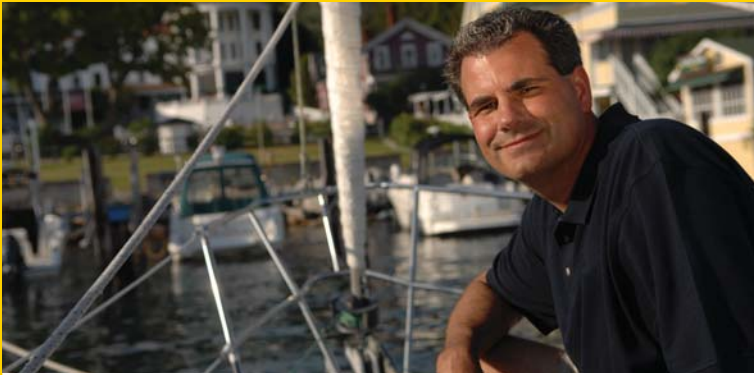
A couple of lovely Japanese maples were also planted. The total effect of the landscaping has made the front yard look as good as the house itself!

I seem to always conclude the same way, perhaps because I simply can't think of anything else to say? But it's a fact that whenever a homeowner or a neighborhood resident makes improvements in the landscape it truly benefits us all. Not only does it enhance the property value for each of us, but it also makes for a beautiful thing to look at!

Many thanks to the Brocks and to the Mystery Person who worked so hard to improve the yard on Jerome Street!



www.edwardjones.com



## How much will you need to retire? Let's talk.

**Bruce C Border, CFP®**  
Financial Advisor

2453 Forest Park Boulevard  
Ft Worth, TX 76110  
817-926-8056  
www.edwardjones.com

**Edward Jones®**  
MAKING SENSE OF INVESTING

Member SIPC

## What would you like to see in the newsletter?

We want your feedback! What topics would you like to see in the newsletter? Send us your suggestions: [newsletter@mistletoeheights.org](mailto:newsletter@mistletoeheights.org).

## Join the Mistletoe Heights Email List!

To subscribe to the Mistletoe Heights Residents mailing list, go to [mistletoeheights.org](http://mistletoeheights.org), click on "Email list" and look for "Subscribing to Residents." Enter your name and email address, and then click "Subscribe." Note: You may need to add residents-bounces@mistletoeheights.org to your address book to receive emails. If you have questions or concerns, contact [moderator@mistletoeheights.org](mailto:moderator@mistletoeheights.org).

Check out our website: [mistletoeheights.org](http://mistletoeheights.org)  
Join us on Facebook: [facebook.com/mistletoeheights](https://facebook.com/mistletoeheights)



**Ruth Story**  
**Broker Associate**  
**817.992.9232**  
**[askRuthStory@gmail.com](mailto:askRuthStory@gmail.com)**



*Trusted... Reliable... Experienced*

*Your home may be worth more than you think!*

The low inventory of existing homes is pushing prices up in many neighborhoods and producing a strong sellers market!

**Call or email today for your free consultation,  
including discussions and advice on:**

**Your home's estimated value**  
**Pricing strategies**  
**Market timing**  
**Staging**

**Preparing your home for sale**  
**Marketing & Presentation of**  
**your home**  
**Answers to your questions**

*Whether you are selling or buying,  
please call or email and let us  
know how we can help.*



[www.RuthStoryOnline.com](http://www.RuthStoryOnline.com)

# Decorating the Streetlight Posts







Deck the halls with  
boughs of *Ilex aquifolium*,  
fa, la, la, la, la ...

May your holidays be rooted in love,  
joy, and peace on earth

Happy Holidays from BRIT.®



**BOTANICAL RESEARCH  
INSTITUTE OF TEXAS®**

Plant to planet.®

ph 817.332.4441  
1700 University Drive  
Follow us @BRIT\_org

fx 817.332.4112  
Fort Worth, TX 76107-3400  
Facebook.com/BRITorg

## Advertising Submission Process

All ads must be paid for by the 10th of the month previous to the month in which the ad will appear. Artwork for all ads should also be submitted by the 10th of the month prior. Artwork should be emailed to: [advertise@mistletoeheights.org](mailto:advertise@mistletoeheights.org). Should you have any questions, please email [advertise@mistletoeheights.org](mailto:advertise@mistletoeheights.org).

## Support Our Advertisers!

The officers of the Mistletoe Heights Association encourage you to support the businesses that advertise in our newsletter. These organizations pay to be in our newsletter and support our neighborhood. Their business also makes this publication possible. Without them we would not be able to provide printed newsletters to every household in the neighborhood free of charge.

## PARK PLACE PHARMACY

Business Hours:  
Monday - Friday  
9:00am to 6:00pm  
Closed Weekends  
& Holidays

Craig Nicholson, RPh  
Monique Nicholson, RPh

Your Neighborhood Pharmacy

Phone: 817-924-9292  
Fax: 817-924-9264

1601 Park Place Ave, Suite B  
Fort Worth, TX 76110-1303



## PLEASE DON'T FENCE ME IN

In case you didn't know, I'm more than just a Mistletoe Heights' area Realtor—I represent buyers and sellers all over Fort Worth, Tarrant County and beyond.



*Call me with all  
your real estate  
needs & questions.*  
*Gaye Reed*



817-688-1952  
gaye.reed@cbdfw.com



## In the Cultural District

### Amon Carter Museum of American Art

*Benito Huerta: Axis Mundi v. 2* through Jan. 11, 2015

*Lone Star Portraits* through May 17

*Navigating the West: George Caleb Bingham and the River* through Jan. 18

*Meet Me at the Trinity: Photographs by Terry Evans* through Jan. 25

*Fresh Perspectives: Benito Huerta and the Collection* through Jan. 11

### Kimbell Art Museum

*Permanent Collection*

*Special Exhibit: Faces of Impressionism, from the Musee d'Orsay* through Jan. 25

### Modern Art Museum of Fort Worth

*Urban Theater: New York Art in the 1980s* Sept. 21 through Jan. 4, 2015

## Volunteers Needed

We need more volunteers! Help us make this neighborhood better.

MHA is looking for four to five people to join the Historical Preservation Committee. Help us ensure the integrity of the architecture in our community.

Contact Chad Jung if you are interested,  
vicepresident@mistletoeheights.com.

## Thank your neighbors!

The following neighbors volunteered to decorate the streetlights in our Mistletoe Heights. They all deserve a round of "thank-you applause." Of special note: The Sheltons at 1355 Mistletoe Drive and Tom Brewer at 2314 W. Magnolia Ave. have both been doing this for about 20 years, followed closely by Scott Harwell at 2208 Edwin St. and Gary Willis at 2237 Irwin St.

Jonnie Steed  
Michael Conn  
Gary Willis  
Quincy Holloway  
Chris Gaines  
Tommie Jo Jefferson  
Stephanie Mischke  
Tom Brewer  
Aaron Torkelson  
Gaye Reed  
Michelle and John Key  
Rose Lynn Scott  
Elisa Jackson  
Jennifer Bearden  
Jim and Amy Pannell  
Tonya Dohoney  
Scott Harwell  
Brice/Laura Docker  
KathyJo Rogers  
Walter Brady  
Ellen Robinson  
Rosaline Eastep  
Bruce Lowry  
Mary Ann Shelton  
Ben Belsher

2220 W. Rosedale St. S  
2321 W. Rosedale St. S  
2237 Irwin St.  
2315 Irwin St.  
2223 Mistletoe Blvd.  
2308 Mistletoe Blvd.  
2230 W. Magnolia St.  
2314 W. Magnolia St.  
2212 Harrison Ave.  
2341 Harrison Ave.  
2222 Mistletoe Ave.  
2340 Mistletoe Ave  
2121 Edwin St.  
2209 Edwin St.  
2305 Edwin St.  
2121 Weatherbee St.  
2208 Weatherbee St.  
1206 Clara St.  
1101 Clara St.  
1126 Buck St.  
1134 Buck St.  
1101 Mistletoe Drive  
1208 Mistletoe Drive  
1355 Mistletoe Drive  
2132 Weatherbee St.

Thank you, one and all!  
-- **Steve McReynolds**





## Josh Lindsay, President

Josh grew up in College Station and has degrees from Texas A&M and UT Austin. His focus was on teaching English as a second language and he was able to work in both Mexico and Turkey before being lured home by his wife-to-be, Lili. Lili's education at the UNT Health Science Center brought them to Fort Worth and Mistletoe Heights immediately after their marriage in 2002. Josh taught at Paschal High School for eight years while Lili finished her education. By the time Lili finished, they knew they would be staying in Fort Worth for good. After 11 years in their first house on Mistletoe Boulevard, they decided they needed one more room for their growing girls (Mateen and Mitra), so they moved three houses down the street to Lindsay House 2.0.

Josh Lindsay  
2238 Mistletoe Blvd.  
Home: (817) 927-0323  
Cell: (682) 554-2382  
[president@mistletoeheights.org](mailto:president@mistletoeheights.org)

## Chad Jung, Vice President

A native of Fort Worth, Chad grew up on Mistletoe Boulevard and attended Lily B. Clayton Elementary School. After graduating from Paschal, he received his bachelor of fine arts in theater lighting design from TCU.

Chad and his wife, Sarah, started their family in Meadowbrook and recently relocated to Mistletoe Heights with their two sons, Riley and Carter, which was always their dream.

Chad is a freelance lighting designer for opera, theater, music and dance, and the resident lighting designer for Fort Worth Opera, Kids Who Care and UNT Opera. [chad Jung@gmail.com](mailto:chad Jung@gmail.com)

Chad Jung  
2112 Weatherbee St.  
817-291-5849  
[vicepresident@mistletoeheights.org](mailto:vicepresident@mistletoeheights.org)



## Mary Ellen Peipert, Newsletter Editor

Mary Ellen was born in Dallas and grew up in San Antonio. She and her husband, Jim, raised three sons in various postings around the world – Moscow, London, Johannesburg and Nairobi – and moved to Mistletoe Heights in 1999.

Her careers have included speech and hearing pathologist in Baltimore, director of docent training at the National Museums of Kenya, and library media specialist in the Fort Worth school district, from which she retired in June.

Mary Ellen Peipert  
2217 Harrison Ave.  
[newsletter@mistletoeheights.com](mailto:newsletter@mistletoeheights.com)  
[mepeipert@gmail.com](mailto:mepeipert@gmail.com)  
Home: 817-926-4117  
Cell: 817-614-9794





## Jeri Jo Blackmon, Treasurer

Jeri Jo is a native of Fort Worth, a TCU graduate and a Mistletoe Heights resident for 32 years. She has been MHA treasurer for six years.

Formerly an IRS agent, she worked for CPA firms for more than 10 years. She is now a self-employed tax professional providing tax preparation services for individuals, businesses and nonprofit organizations, as well as training for QuickBooks accounting software.

Jeri Jo has two grown sons who are married and three grandsons – all of whom live in Fort Worth.

As the MHA treasurer, she keeps the financial records of the association, pays the bills, invoices and collects money from newsletter advertisers. She collects dues from residents and provides financial reports for the association.

Jeri Jo Blackmon  
1408 Mistletoe Drive  
817-923-4393  
JeriJo@charter.net

---

## Valerie Ewing, Secretary

Valerie Ewing has been a resident of Mistletoe Heights since 2004 and secretary for MHA for the past year. She is from Nebraska and has four siblings. Her father lives in Nebraska and her mother recently relocated to Mistletoe Heights from Florida. Valerie is an internal medicine physician at Texas Health Resources Harris Methodist Hospital. She is married to Scott Ewing and they have a daughter, Avery.

Valerie Ewing  
1303 Mistletoe Drive  
817-791-9535  
secretary@mistletoeheights.org



## Christmas Tree Pickup

Need to discard your Christmas tree? Put live trees at the curb on your regular pickup day, which for Mistletoe Heights is Wednesday. You will need to remove all plastic, stands, glass and ornaments.

Our monthly pickup day for bulky items is the third Monday of the month. You may place items at the curb as early as 6 p.m. the Friday before.



# Mistletoe Heights Association Meeting

## Nov. 18, 2014, 7 p.m.-8:30 p.m.

Officer attendees: Kyle Jenson, Jeri Jo Blackmon, Ben Belsher and Valerie Ewing

Other attendees: 38 neighbors

Special guests: District 9 City Councilwoman Ann Zadeh

Host: Tom Marvelli and Patty Decoster, 1326 Mistletoe Drive

Secretary: Valerie Ewing

**7:15 p.m. - Special guest:** The meeting was begun by Kyle Jenson, who said that this was his last meeting and that it has been an honor to serve as president of the Mistletoe Heights Association for the past two years. He then introduced special guest Ann Zadeh.



Ann, newly elected City Council member for District 9, began by talking about budget shortfalls. In sum, there's not enough money to do all there is to do. Question: What streets get repaired or patched? That depends on the "squeaky wheel" concept, i.e., streets get fixed when a lot of people call and report problem areas. The city does not have enough employees to canvass areas looking for needed repairs, so it is up to us. She stressed that the people need to communicate their needs. It is also important that the neighborhood association participate as well. She cited an example of one neighborhood association that discussed disbanding and donating its funds to a local charity and church. She said this is fundamentally a bad idea. Each neighborhood needs representation.



### **7:26 p.m. - Meeting called to order**

Previous minutes accepted

**7:27 p.m. - Ben Belsher**, development report: The Price Hulsey townhomes on Jerome Street at Mistletoe Boulevard are ready for lease. There are four two-story homes, very upscale. The apartment building planned for Jerome and Rosedale streets has not progressed since September. The developers are taking input from the Mistletoe Heights Development Committee and Ben will continue reporting on it. Jason's Deli, next to Torchy's Tacos, is under construction. We need a volunteer to keep tabs on this area because the developers have a commitment to Mistletoe Heights. Fresh Market across the river is under construction. The pedestrian bridge across the Trinity may be finished by spring 2015. The bridge goes under Rosedale and the Chisholm Trail Parkway and is presently being used by autos, but when complete it will have been converted to pedestrian use only. A small waterpark is being added at the Fort Worth Zoo for toddlers. The First Financial Bank is under construction at Forest Park Boulevard and Rosedale. The developers are proud of their building and want to have a good relationship with our neighborhood.

**7:33 p.m. - Stefanie Ball Piwetz**, newsletter report: Stefanie was not present at the meeting, but Jeri Jo Blackmon introduced Joe Halbach, who lays out the newsletter and makes it look like it does. Thank you, Joe!

**7:34 p.m. - Kathy Jo Rogers**, welcome basket report: Since the last meeting, nine welcome baskets have been delivered. Thank you to everyone who provided information on new neighbors. Once again, if you know of someone new to our neighborhood, please provide the name, address and other information, such as children or pets, to Kathy Jo Rogers: KathyJoRogers@yahoo.com.

**7:38 p.m. - Kelly Hosley/Scott Ewing**, website report: We need help keeping the website updated, so please volunteer your time if you can.

**7:39 p.m. - Aaron Shutt**, gas well report: In February, a geological survey will be conducted in our neighborhood. It will encompass 15 square miles, including Mistletoe Heights, Berkeley and Fairmont. You will see Vibe Trucks with crews placing white boxes, mostly in alleys, that record vibration and map underground looking for gas. It will take about six weeks. An email will be sent out in January as a reminder.

# Mistletoe Heights Association Meeting

Continued From Page 12

**7:44 p.m. - Rosaline Takes**, sound wall report: Rosaline was not present. Kyle Jenson said that the wall is complete and that we're waiting for the area to be backfilled, sprinklers installed and the curve redone to allow for a larger planting area.

**7:46 p.m. - Andrew Clogg**, sidewalks on Jerome report: Andrew was not present, but Susan Pressley mentioned that Phase One will begin soon and that we may have sidewalks on the east side of Jerome as soon as spring 2015. The sidewalks will run continuously from Park Place to Newby Park. Phase Two includes redoing some of the sidewalks along the "walkway-to-school" route. We owe thanks to the Walking School Bus program, Mayor Betsy Price and Ann Zadeh.

**7:48 p.m. - Jeri Jo Blackmon**, treasurer's report: At this time we are ahead by \$940. Our dues donations are down by \$1,500 compared to this time last year. Of the 500 households in our neighborhood, only 78 households have made dues donations this year. There is no required amount; any amount you can contribute will be helpful.

**7:55 p.m. - Volunteers needed:** Facebook page moderators (the goal is to determine if the people on it are actual residents of MH); Socktober; Jason's Deli plan; pedestrian bridge; Graffiti Abatement Art Project; dinner for the homeless; Movie Night (spring and fall); fund-raiser for a neighborhood sign; Historical Preservation Committee. If you want to volunteer but need more information before you jump in, please email Josh Lindsay at [president@mistletoeheights.org](mailto:president@mistletoeheights.org). Our neighborhood needs YOU!

## **New Business:**

8 p.m. - Steve McReynolds headed a nominating committee for new MHA officers made up of Steve, Jeri Jo Blackmon, Ben Belsher, Kyle Jensen, Steve McReynolds, Jim Peipert, Susan Pressley and Gaye Reed.

MHA elected officers for 2015:

President: Josh Lindsay

Vice President: Chad Jung

Newsletter Editor: Mary Ellen Peipert

Treasurer: Jeri Jo Blackmon

Secretary: Valerie Ewing

**8:06 p.m. - Kyle Jenson** gave a farewell speech.

**8:08 p.m. - Meeting adjourned**



## Mistletoe Heights Association Supporters

As of November 30, 2014

*Names in bold print have contributed since the last newsletter*

### Magnolia

Barrow, Wade & Brock	Ewing, Scott & Valerie	McReynolds, Steve & Kathy
Blackmon, Jeri Jo	Greenslade, Joe & Lillian	Muller, Mark & Lynn
Brizendine, Graham	Hellberg, Jon & Susan	Parrish, Bill & Sue
Csanadi, Randy	Livingston, Amanda	<b>Pressley, Brent &amp; Susan</b>
Davis, Jeff	<b>Lowry, Bruce &amp; Lisa</b>	Reece, Kelley & Megan
Edwards, Chris & Alison	<b>Marvelli, Tom &amp; Patty</b>	Smith, Flavious & Melanie
<b>Ellis, Luke &amp; Terri</b>	Miller, Brian & Ashley	Sybesma, Richard & Wendy
Ettinger, Alan & Phyllis	Mitchell, Mark & Susie	Yantis, Richard & Christi
<b>Evans, Tim &amp; Rita</b>		

### Gardenia

Asher, Garland & Betsy	Grant, David & Julie	<b>Miller, Tim &amp; Williams, Mary Alice</b>
Benson, Jack & Carol	Guffey, Dorothy	<b>Reck, Heather</b>
Cetto, Allen & Cheri	Gunn & Camp, David & Claudia	Richey, Tom & Eileen
Dempsey, Donna	Hale, Tommy & Pat	Shaw, Jim & Carol
<b>Desroche, Pamela</b>	Hotard, John & Susan	Simons, Greg & Sharon
Dohoney, Tanya	Jung, Chad & Sarah	Sisk, Betty
Eastepp, Rosaline	Key, John & Michelle	<b>Spencer, Carol</b>
Gensheimer, Chris & Martha	<b>Lindsay, Josh &amp; Lili Meisamy</b>	<b>Taylor, Barbara</b>
Gibbons, Jeff	Peipert, Jim & Mary Ellen	Tyson, Gerry & Meralen
Graham, Gerry & Kelli		Wild, Beth

### Holly

Graves, Dorothy	McQuerns, Sam & Martha	Kerstetter & McFarland, Todd & Holly
Kelly, Callan	Rustad, Eric & Nikki	<b>Sippel, Jimmie</b>

### Mistletoe

Anonymous	Gude, Richard & Judy	<b>Jones, Mark &amp; Carraway, Rhonda</b>
<b>Blanton, Paul &amp; Carol</b>	Hobson, Jack & Nancy	Maugans & Cross, Clay & Deanna
Brous, Nancy	Horn, Bruce & Betsy	Pereth, Hank & Linda
Carmody, Jeff & Erin	Hubbard, Mrs. J.H.	Ramsay, Nancy
<b>Cates, Karen</b>	Keese, Craig & Kathy	Sevadjian, Margaret
Cole, Willard & Aline	Martin, William	Teague, Joy
Dowdle, Roy & Faye	<b>Matlock, Gray &amp; Mary</b>	The Body Garage
<b>Dreyfus, Charles</b>	<b>Newcom, Justin &amp; Kristen</b>	<b>Wahl, Cynthia</b>
Fershtand, John & Chris	O'Connell, Mike & Carole	<b>Whitney, Garrett &amp; Sharon</b>

Thank you neighbors, for your donations to our neighborhood association!



2014 Levels of Giving  
 Magnolia - \$100 and up  
 Gardenia - \$50 to \$99  
 Holly - \$26 to \$49  
 Mistletoe - Up to \$25

## FREE CLASSIFIED ADS

**HANDYMAN IN YOUR NEIGHBORHOOD** No job is too small. I live on Edwin and have local references. Have over 30 Years experience in remodel. Call Terry 817.454.1795 free estimates!!

**HOME FOR SALE – 1126 MISTLETOE DRIVE**  
5 Bedroom-all-brick-and-decorative-masonry custom home is situated above the Trinity River and priced at \$887,000.  
For more information: CALL OWNER at 817-798-5909  
AGENTS PLEASE CALL CREEKVIEW REALTY  
214-696-4663

**COMPLETE PROPERTY RENOVATION:** Demolition, cleanup, specializing in historic home renovations, painting, wallpaper. Contact Jeff Cunningham at 817-988-7113.

**TUTOR, K-3rd grade.** Caring, encouraging, experienced (12 years) certified elementary school teacher is offering tutoring this summer. Contact Kathy Jo Rogers at 817.688.0905 or kathyjorogers@sbcglobal.net.

**COWTOWN COMPUTER SERVICES**  
Home Computer clean up and repairs. We pick it up, you don't lift a finger. 48-hour delivery time guaranteed Contact us today for pricing! 817-523-1058 cbrewer@cowtowncs.com cowtowncomputerservices.com

**HOME WANTED**  
We'd like to buy a home (3+bed/2+ bath) around Lily B. Clayton or Tanglewood area for Spring/Summer 2014. Please call Lidia or Todd Bowers at 469.879.5172.

**26 YEARS EXPERIENCE IN TEACHING.** Tutoring Pre-K-2nd Grade. Is your child falling behind? Need some one-on-one attention? Don't want your child to lose what they've learned over the summer? I can help! Call Joy Ridler at 817.637.5541.

**HARPIST:** Sally Sledge ministers on the harp as a worshiper, psalmist and vocalist. She has recorded two CDs: "Return to Your Rest" and "Cherished Times". She is available to play for home groups, church events, Bible studies, weddings, funerals, dinner parties or any special occasion. For more information and song samples, you may access her web site at [www.sallysledge.com](http://www.sallysledge.com).

**MISTLETOE HEIGHTS PET SITTERS** is now booking for your vacation, or any other time. References available on request. [Mistletoeheightspetsitters.com](http://Mistletoeheightspetsitters.com) or 817-247-2870

**TAX PREPARATION**  
Jeri Jo Blackmon, former IRS Agent and current Enrolled Agent licensed by the IRS will prepare and e-file your individual or business tax returns. Also, as a QuickBooks Pro Advisor, training is available for individuals or businesses who want to improve their skills or learn new skills using QuickBooks accounting software. Contact Jeri Jo Blackmon at 817-923-4393 or email [JeriJo@Charter.net](mailto:JeriJo@Charter.net). 1408 Mistletoe Drive.

**LEARN TO SWIM LESSONS**  
-With emphasis on Olympic strokes. Contact Richard Sybesma, Head Swim Coach, TCU Box 297600, Fort Worth, TX 76129; 817-257-5646 or 817-257-7963

**HOME WANTED** We'd like to buy a home - from an owner - no agents, please! 817-732-3836.

**PIANO LESSONS**  
For beginners and intermediates. Mary Smith, 2300 W. Magnolia Ave. 817-927-8876.

**ESTATE SALE SERVICES**  
Estate Sales & Appraisals Experienced, reliable estate sales in and out of Mistletoe Heights since 1992. Certified Appraiser, International Society of Appraisers. Appraisals for insurance, estate evaluations, donations; whatever your needs. Contact: Terri Ellis, Mistletoe Estate Sales, 817-926-9424 or email [tquilts@mac.com](mailto:tquilts@mac.com)

**ADULTS ENJOYING THE PIANO TOGETHER**  
- We focus on music & joy! Newbies ~ piano wannabes ~ relearners. Keyboard skills, music reading made easy, drumming, and moving to the music. 8-week workshops on weekday mornings at Arts Fifth Avenue in Fairmount. FREE preview classes. For more info visit our website at [www.AdultMusik.com](http://www.AdultMusik.com) or contact Carol Spencer at 817.927.3240 or [carolingfw@sbcglobal.net](mailto:carolingfw@sbcglobal.net).



**City Roofing Company**  
Established 1964

**Residential Roofing Specialists**  
No-Charge Estimates • Reroof • Repairs • Inspections  
**817-738-1756**



# Helpful Phone Numbers, Emails, Addresses and Websites

## City information

City Code violations	817.392.1234
City of Fort Worth	817.392.2255
fortworthtexas.gov	
Police—nonemergency	817.335.4222
Garage sale permits	817.392.7851
Graffiti abatement	817.212.2700
Lily B. Clayton Elementary	817.922.6660
schools.fwisd.org/clayton	
Paschal High School	817.814.-000
paschalhs.org	
Historical Preservation	
Liz Casso	817.392.8037
liz.casso@fortworthtexas.gov	
Southside Preservation Hall	817.926.2800
Hallyes@earthlink.net	
southsidepreservation.com	
The T/Longhorn Trolley	817.215.8600
the-t.com	
Trinity Railway Express	817.215.8600
trinityrailwayexpress.org	
City Council District 9	
Ann Zadeh	817.392.8809
district9@fortworthtexas.gov	

## MHA officers

officers@mistletoeheights.org	
President	
Josh Lindsay	817.927.0323
president@mistletoeheights.org	
Vice President	
Chad Jung	817.2915849
vicepresident@mistletoeheights.org	
Secretary	
Valerie Ewing	817-791-9535
secretary@mistletoeheights.org	
Treasurer	
Jeri Jo Blackmon	817.923.4393
treasurer@mistletoeheights.org	
Newsletter Editor	
Mary Ellen Peipert	817.926.4117
newsletter@mistletoeheights.org	

## Volunteers

Historic Preservation Committee	
Roger Ross	817.372.6865
Street Rep Captains	
Melissa Kohout (East side)	817.313.1419
Rosaline Eastepp Takes (West side)	817.207.9750
Welcome Baskets	
Kathy Jo Rogers	817.688.0905
Diana Brandenburg	214.734.9140
Advertising Manager	
advertise@mistletoeheights.org	
Newby Park	
Dottie Guffey	817.921.6288
Email Moderator	
Richard Yantis	817.924.2857
Webmaster	
Scott Ewing	214.403.7762
Historian	
Luke Ellis	817.339.2459
Yard of the Month	
Bruce Horn	817.526.4339

## Street reps (listed by blocks)

East of Forest Park	
2200 W. Rosedale South	
Dottie Guffey	817.921.6288
2200 Irwin	
Gary Willis	817.924.4000
2100/2200 Mistletoe Blvd.	
Melissa Kahout	817.313.1419
2100/2200 West Magnolia	
Colleen Shutt	214.455.9097
2200 Harrison	
Aaron Torkelson	817.907.5533
2100 Harrison Ave.	
Vacancy	
2100 Mistletoe Ave.	
Pat Hale	817.924.5263
2200 Mistletoe Ave.	
Richard & Christi Yantis	817.924.2857
2100/2200 Edwin	
Katrina Pittman	817.921.2221
2100 Weatherbee	
Judy Gude	817.926.8843
2200 Weatherbee	
Susan Harwell	817.923.8806
2100 Morphy	
Vacancy	
Forest Park Blvd.	
Steve McReynolds	817.926.7955
West of Forest Park	
2300 W. Rosedale South	
Kimberly Helixon	817.927.4641
2300 Irwin	
Sue Duvall	817.926.8714
2300/2400 Mistletoe Blvd.	
Lisa Stewart	817.924.9666
2300 West Magnolia	
Susan Pressley	817.923.6061
2300/2400 Harrison	
Robert DeVargas	817.923.9393
2300 Mistletoe Ave.	
Jason Fuller family	
2300 Edwin	
Grant Pannell	817.924.0051
1100 Clara	
Marc & Kathy Jo Rogers	817.923.3304
1200 Clara	
Bryce & Laura Docker	bryedocker@hotmail.com
1100 Buck	
Kate Herring	817.923.3843
1200/1300 Buck	
Trisha Dianne Stemple	817.926.6546
Mistletoe Drive	
Meralen & Gerry Tyson	817.926.5909
2300 Mistletoe Drive	
Chris Fershtand	817.923.8422
Carol Benson	817.921.4000

## Neighborhood police officers

Sidney Keith (West)	817.944.1038
David Cloninger (East)	817.992.0181

## MHA yearly memberships

Voluntary dues are \$15, \$25, \$50 or whatever you can afford. Your dues help pay for this newsletter, the Mistletoe Heights phone directory and many neighborhood functions. Please make your check payable to Mistletoe Heights Association. Mail to: Jeri Jo Blackmon, 1408 Mistletoe Drive.

## Free classified ads

As a MH resident, you get one free classified ad. Please submit copy by the 15th of the month. Notify the editor at 817.201.1909 or email: newsletter@mistletoeheights.org.

## Editorial policy

Articles and letters to the editor are welcomed. To be published as written, letters must be addressed to the editor, signed, and include a phone number.

Anonymous letters will not be published. Articles may be submitted for publication, signed or unsigned, subject to approval and editing.

Contact information helps, especially if we have questions for you.

Letters to the editor are limited to a half-page (approximately 350 words). Please send email to: newsletter@mistletoeheights.org.

## Advertising information

To place an advertisement or for actual mechanical sizes, please email:

advertise@mistletoeheights.org

### Rates:

Business-card size \$25

1/4 page \$50

Half page \$100

Full Page \$200

Pre-printed inserts \$100

8 1/2 x 11

Deadline for ads, payment and artwork is the tenth of the month.