



Mistletoe Express

February 2014
www.mistletoeheights.org

Photo By: Jim Peinert

PRESIDENT'S CORNER

Our surroundings—people and places—mold us into the citizens we are today. Whether or not this plays a role in choosing to do the right thing when faced with a decision is an ongoing topic of discussion. I believe our upbringing and the neighborhoods in which we live are the determining factors in making us into the unique beautiful people we are today. Both have a large impact on why we make the decisions we make, act the way we do, and function the way that we do in society.



Kyle Jensen

It is so important to keep in mind that our neighborhood has had and continues to have a direct impact on us as individuals and as citizens. We are all capable of doing the right thing when presented with a difficult decision. Each of us has experienced some good from others, whether it was a neighbor, teacher, community leader, sibling, or parent. Kindness and compassion are things we hold close to us, imitate, and never forget.

As members of the community the officers and a number of volunteers we worked very hard to provide information for a directory as a source of support for the residents of Mistletoe Heights. This tool has been proven in the past to help connect neighborhoods and provide those everlasting bonds that shape us. With each new resident our neighborhood changes; in my three years here I've witnessed this and have met a dozen new residents.

However my wife, Stephanie, recently commented on our lack of true friends, even mere acquaintances, in this neighborhood. Our jobs add work friends to our world, as well as people we met through socializing, often with those same coworkers. But the couple two doors down with two teenagers?

The athletic residents on the other end of the block with the bountiful pear trees? The 30-somethings, like us, who sometimes sip wine on their front porch? They are strangers.

I have lived in other communities for years and never knew my neighbors. You may be someone that has lived in Mistletoe Heights for years and still are an unknown resident. Many new residents have joined the directory for the first time. Neighbors offered as much about themselves as they wanted: next to nothing, or all the way up to the names and ages of people in the family.

I hope most of us have been thinking about community a bit more in the wake of my tenure as president of this association. It is my goal to compel you to get to know your neighbors: find out about the vacant house a few doors down, the pile of college kids renting the split-level the next block over, learn about the van that has been parked at the corner for a week, the loud popping noises — champagne? gunfire? blown transformer?—that sounded through the neighborhood one Saturday at 2:15 a.m.

Continued on page 8

Next Neighborhood Meeting

February 18, 7 pm
2329 Mistletoe Drive

Inside This Issue:

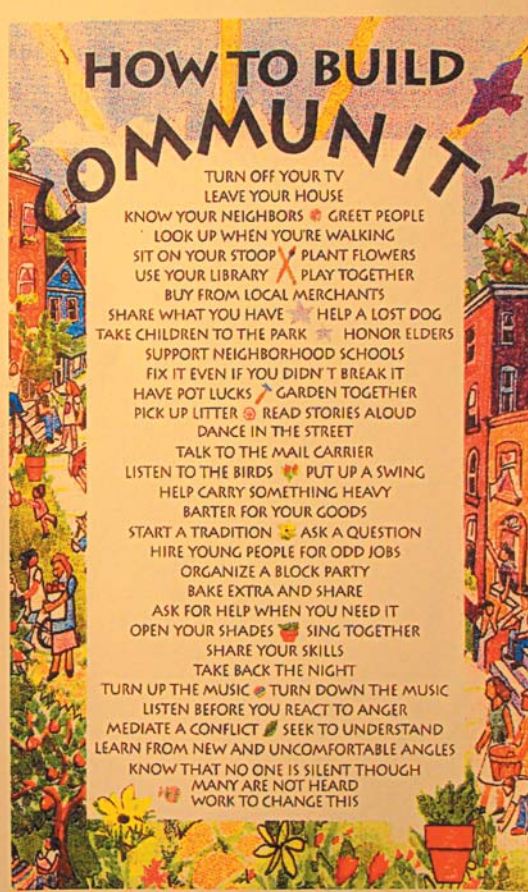
Page 2-4 - What's Up in the Neighborhood, Soundwall, Zoo Updates

Page 5 - Clara Update
Page 6 - 2014 Calendar
Page 7-8 - Butterflies in the Garden, Lily B. Meet & Greet

Page 9-11 - Farewell & Welcome, President's Message Cont'd
Page 13 - MHA Inc. & Exp. Report, We Need Your Help

Page 14-16 - In the Cultural District, Fun Runs
MHA Supporters, Classifieds, Helpful Numbers

What's Up in the Neighborhood



Photos By
Jim Peipert

On January 15, members of our neighborhood attended the 11th annual Fort Worth Neighborhood Awards Ceremony, which was put on by the City of Fort Worth and the Fort Worth League of Neighborhood Associations. A total of 60 Fort Worth neighborhoods and individuals were nominated for seven awards and our neighbors Martin Herring and Kyle Jensen were finalists for the 2013 Ben Ann Tomayko Neighbor of the Year. Attendees to the awards ceremony included Fort Worth mayor Betsy Price, seen in the photos above, as well as neighbors Ben Belsher, Irene Stemple, Jim Peipert, Trisha Stemple, Kyle Jensen (from left to right in the bottom photo), as well as John Key and Pam Cammell (not pictured).

For a list of this year's winners please visit: <http://fortworthtexas.gov/citynews/default.aspx?id=124058>. We encourage all our neighbors to strive to achieve one or more of the awards next year and together we could win neighborhood of the year!

Soundwall Update

The long-awaited NTTA noise wall along the northwest edge of Mistletoe Heights is now under construction. The NTTA estimates that the wall construction will be completed in six months, but it could be completed sooner.

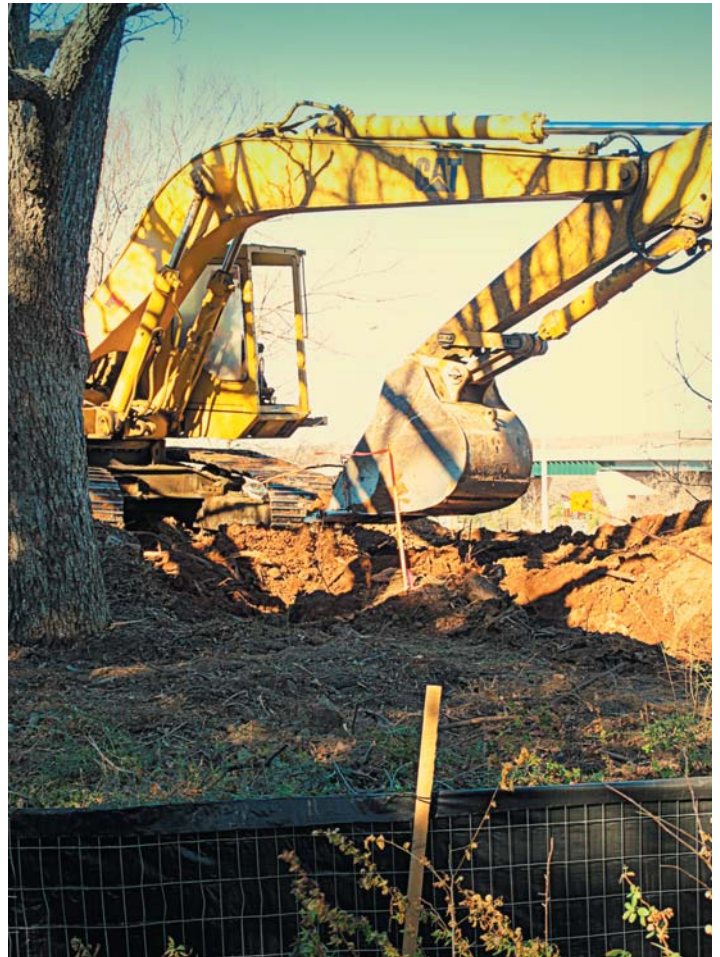
The NTTA took noise measurements before the construction of the Chisholm Trail Parkway began. It found four houses, or “receivers,” had noise levels that would likely be unacceptable with the expected increase in noise levels from the Chisholm Trail Parkway. This is documented in the Final Environmental Impact Study the NTTA submitted to the Federal Highway Administration. (http://ftp.dot.state.tx.us/pub/txdot-info/ftw/sh121t/sh121_feis_vol1.pdf)

According to the FEIS, 1101 Mistletoe Dr. now sustains an average noise level of 68dB. (This is a 24 hour average. Noise levels are typically higher during the day than at night). This measurement was made when there were just two train tracks, not the four there are now. Without a noise wall present, it is estimated that traffic on the Chisholm Trail Parkway would increase the noise level by another 3dB.

The Fort Worth City Council passed a unique noise law that sets precise limits on what qualifies as too loud. In residential neighborhoods, the limits are 60 decibels at night, 70 decibels during the day.

An agreement was made between the MHA wall committee and the city/NTTA that once the wall is completed, the city/NTTA will repair the sprinkler system MHA installed along the berm many years ago. Once construction is complete and grass has been planted, the neighborhood can plan and plant a maintainable landscape.

Photos By Jim Peipert



Zoo Update

Neighbors, I want to let all of you know about a fairly significant construction project that is underway at the zoo. The project involves a significant portion of the soccer field/green space along Colonial Parkway near the miniature train.

I spoke with Alexis Davis, who is a PR rep for the zoo. The zoo's property line was established in the early 1990s. The zoo apparently did not want to build to the property line until they believed there was a need. The fence is to be built and finished within the next 60 days. I am told they are installing more than 400 trees, bushes, and shrubs along the fence, and that landscaping will be installed as the fence is built. This is a permanent fence, not a construction fence, and is being built now so the zoo can install water, sewer, etc., for a new exhibit space to be announced this year. I was also told the setback of the fence from Colonial Parkway is 60 feet.

My contact at the zoo is Alexis Wilson, director of communications. Her number is 817-759-7375 and her email is awilson@fortworthzoo.org. You are free to contact her if you have any questions.

Thank you,
Kyle Jensen

City of Fort Worth, Texas

Mayor and Council Communication

| CREATION | REFERENCE NUMBER | SUBJECT | PAGE |
|----------|------------------|--------------------------|--------|
| 2-28-89 | G-7944 | FOREST PARK ZOO BOUNDARY | 1 of 1 |

Recommendation

It is recommended that the City Council adopt the attached ordinance establishing the Zoo boundary within Forest Park.

Discussion

One condition of the City Council's approval of the Forest Park Master Plan on October 6, 1987 (M&C G-7285) was that a detailed study be prepared that defines the boundaries of the Zoo within the Park.

The boundary survey of the Zoo, prepared by the Transportation/Public Works Department with assistance from the Park and Recreation Department, reflects the presently fenced Zoo area (42.7 acres) and its proposed expansion to the west and north. The proposed Zoo expansion area would encompass a portion of the University Drive parking lot, the amusement rides area, and a portion of the athletic fields area off Colonial Parkway. The Zoo Master Plan programs a maintenance complex, African Rain Forest and African Savannah in the expansion area.

While one of the two existing athletic fields will be occupied by future exhibit space, the remaining field will have to be re-aligned in the remaining open space. The remaining open space would facilitate a relocated field with the existing dimensions of 200' x 360'.

The proposed Zoo boundary reflects the Forest Park Master Plan layout and comments made at numerous Park and Recreation Advisory Board meetings. The result of this boundary would establish a current Zoo boundary of 58,532 acres.

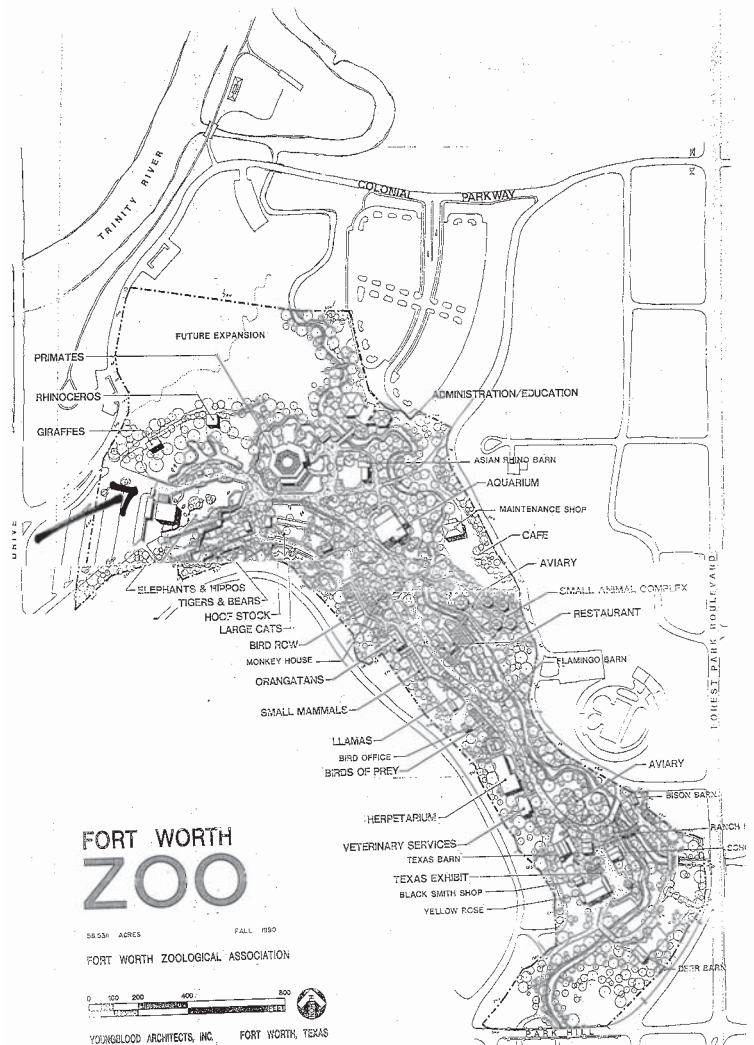
At its meeting on December 20, 1988, the Park and Recreation Advisory Board voted to recommend approval of the Zoo boundary.

RG:mmc

APPROVED BY
CITY COUNCIL

FEB 24 1989

Ruth H. Hester
City Secretary of the
City of Fort Worth, Texas



Clara Update



The Clara Plan

The home at 1144 Clara was recently purchased by an investment group. The group had the home demolished and split the property into two separate lots. These two lots were then sold to HD/Village homes. Construction on two new homes should begin soon. The corner lot has been purchased by an individual who intends to have the **Oak Park plan** built; however, it will require adjustments as the plan is too big for the lot. The second lot will have the **Clara (B) plan**. Neither of these lots are included in the historical overlay.

| | |
|---|-----|
| The Oak Park | |
| | |
| 3,121 Sq. Ft. | |
| 3 bedrooms, 2.5 bathrooms, 2-car garage | |
| Private master suite on 1st floor level | |
| Media Room on 2 nd floor level | |
| VILLAGE HOME | 50' |



2014 Calendar

| | |
|---------------------------------------|--|
| New Year's Day..... | Wed, January 1 |
| Martin Luther King Day..... | Mon, January 20 |
| Presidents Day..... | Mon, February 17 |
| Members Meeting..... | 2329 Mistletoe Drive.....Tues, Feb 18 @ 7:00 |
| Cowtown Cheer Station..... | 2224 Park Place Ave.....Sun, Feb 23 @ 7:30AM |
| Garage Sale..... |Sat, March 29 |
| Easter Egg Hunt..... | Newby Park.....Sat, April 19 @ 10:00 |
| Spring Movie Night..... | Newby Park.....Fri, May 13 @ 8:30 |
| Members Meeting..... | 2217 Irwin.....Tues, May 20 @ 7:00 |
| Memorial Day..... | Mon, May 26 |
| Independence Day Parade..... | The Triangle.....Fri, July 4 @ 7:00 |
| Mayor's Tri Cheer Station..... | 2224 Park Place Ave.....Sun, July 13 @ 7:00AM |
| National Night Out..... | The Triangle.....Tues, Aug 5 @ 7:00 |
| Members Meeting..... | 1351 Mistletoe Drive.....Tues, August 19 @ 7:00 |
| Labor Day..... | Mon, September 1 |
| Socktober..... | 1105 Mistletoe Drive.....All of October |
| Columbus Day..... | Mon, October 13 |
| Fall Movie Night..... | Newby Park.....Sat, Oct 18 @ 7:00 |
| Pumpkin Carving Contest..... |Thurs, Oct 30 |
| Halloween..... | Fri, October 31 |
| Veterans Day..... | Mon, November 11 |
| Members Meeting..... | 1326 Mistletoe Drive.....Tues, Nov 18 @ 7:00 |
| Bow-tying Party..... | 2237 Irwin.....Sun, Nov 23 @ 2:00 |
| Thanksgiving Day..... | Thurs, November 27 |
| Christmas Party..... | 1410 Mistletoe Drive.....Sun, Dec 7 @ 5:00 |
| Christmas Day..... | Thurs, December 25 |
| New Year Eve..... | Wed, December 31 |

WEBSITE: www.mistletoeheights.org **EMAIL:** residents@mistletoeheights.org

NEIGHBORHOOD CHAT ROOM: www.facebook.com/groups/mhneighbors

Interested in Coordinating, Hosting, or Volunteering? Call 940-367-1428

Officers

| | | |
|------------------------|---------------------------|--------------|
| President..... | Kyle Jensen..... | 940-367-1428 |
| Vice-President..... | Ben Belsher..... | 817-919-8375 |
| Secretary..... | Val Ewing..... | 817-791-9535 |
| Treasurer..... | Jeri Jo Blackmon..... | 817-923-4393 |
| Newsletter Editor..... | Stefanie Ball Piwetz..... | 817-201-1909 |

Newsletter Chairs

| | | |
|------------------------|---------------------------|--------------|
| Editor..... | Stefanie Ball Piwetz..... | 817-291-1909 |
| Design/Layout..... | Joe Halbach..... | 817-994-8942 |
| Advertising..... | Stefanie Ball Piwetz..... | 817-201-1909 |
| Ad Administration..... | Jeri Jo Blackmon..... | 817-923-4393 |
| Distribution-West..... | Rosaline Takes..... | 817-207-9750 |
| Distribution-East..... | Melissa Kohout..... | 817-313-1419 |

Committee Chairs

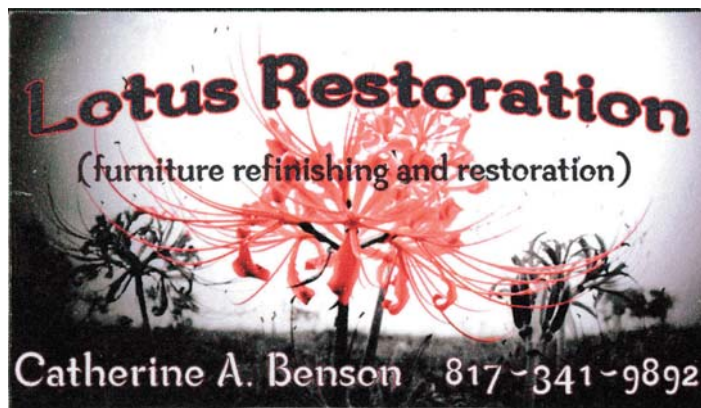
| | | |
|----------------------------|------------------------|--------------|
| Email Moderator..... | Richard Yantis..... | 817-924-2857 |
| Historic Preservation..... | Roger Ross..... | 817-372-6865 |
| Newby Park..... | Marjorie Day..... | 817-914-8057 |
| Website Design..... | Scott Ewing..... | 214-403-7762 |
| Website Editor..... | Mike Danella..... | 817-927-8875 |
| Welcome Baskets..... | Kathy Jo Rogers..... | 817-688-0905 |
| | Diane Brandenburg..... | 214-734-9140 |
| Historian..... | Luke Ellis..... | 817-339-2459 |

Fort Worth

| | |
|---|--|
| Police (non-emergency)..... | 817-335-4222 |
| East of Forest Park..... | Officer David Cloninger.....817-992-0181 |
| West of Forest Park..... | Officer Sidney Keith.....817-944-1038 |
| City Code Violations..... | 817-392-1234 |
| Homeless Prevention..... | 817-392-7552 |
| Street Light Repair..... | 817-392-4477 |
| Animal Control..... | 817-392-7297 |
| Bird Rescue..... | 817-457-4021 |
| Garage Sale Permits..... | 817-392-7851 |
| City of Fort Worth..... | 817-392-2255 |
| Joel Burns (City Council District 9)..... | 817-392-8803 |

Happy Valentine's Day

How are you going to celebrate your loved ones this year? Email us and share your story, newsletter@mistletoeheights.com



What would you like to see in the newsletter?

We want your feedback! What topics would you like to see in the newsletter? Send us your suggestions: newsletter@mistletoeheights.org.



Butterflies in the Garden coming in March!

By Steve Huddleston, Senior Horticulturist

Over 12,000 live, fluttering butterflies from North and Central America, Africa, and Southeast Asia will fill the Garden's conservatory March 1-April 6, 2014. The exhibit will be open daily, including Sundays, from 10:00 A.M. to 4:00 P.M. The theme for the 2014 exhibit is "The Amazing Butterflies of Asia" since the 2014 exhibit will feature butterflies from Asia such as the Archduke (*Lexias pardalis*), Paper Kite (*Idea lecoconoe*), Scarlet Mormon (*Papilio rumanzovia*), and Striped Blue Crow (*Euploea mulciber*), all of which are from Malaysia. Of these, the Paper Kite and the Great Mormon are the most striking. Butterflies from Central America include Small Postman (*Heliconius erato*), Pink-Spotted Cattleheart (*Parides photinus*), Malachite (*Siproeta stelenes*), Tiger Longwing (*Heliconius hecale*), and Blue Morpho (*Morpho peleides*). Of these, the Blue Morpho is the most striking and a perennial favorite among visitors.

In addition to seeing thousands of butterflies flying through the air, visitors to Butterflies in the Garden can also learn about the life cycle of butterflies by watching them emerge from chrysalises in a glass case in the conservatory.

Butterflies in the Garden will also feature an interactive exhibit entitled Partners in Pollination that will be on display at the Botanical Research Institute of Texas (BRIT). This fascinating exhibit showcases the vital role different animals/insects play in the pollination of many plants, including important food crops.

The Botanical Society will operate a gift shop in the Garden Center in conjunction with Butterflies in the Garden. Visitors will have the chance to purchase butterfly-themed T-shirts, posters, jewelry, games, and gift items.

Admission to the exhibit is \$10 for adults, \$8 for seniors 65 and over, \$6 for children 3-12, and free for children 2 and under. All tickets are timed entry tickets and may be purchased in advance through a link on the Garden's website at www.fwbgo.org.

If you are interested in volunteering in any capacity during this crowd-pleasing event, please call Larinda at 817-392-5543. There will be a need for greeters, door attendants, docents in the conservatory, and gift shop volunteers.



We love the
unique details our
customers come
up with.

Steve Chojnowski

Office: 817-423-1935 Cell: 682-553-3161

Email: housetailors@yahoo.com

Website: housetailors.com

Lily B Meet and Greet

Incoming Kindergarten Meet and Greet at Sweet Lily B.
Thursday, February 6, 2014 from 1:30 to 3:00pm

Lily B. Clayton Auditorium

Stay and play on the playground afterward.

Contact Meredyth Haller at 817.475.2333 or
barr25@yahoo.com with questions.

Celebrating Sweet 16

Old Neighborhood Grill



1633 Park Place

In Park Place Village

Between 8th Ave and Forest Park

817-923-2282

Open 7a - 9p • Mon - Sat



FARMERSSM INSURANCE

AUTO • HOME • LIFE • COMMERCIAL



Larry Kardaras, Agent/Owner

817-377-9941

3341-B Winthrop Avenue

Fort Worth Texas, 76116

*New! Lower Auto Insurance Rates
Discounts for New Home/New Roof
Whole & Term Life Products*

Ask about Professional Discounts for:
TEACHERS, POLICE OFFICERS, FIREFIGHTERS,
MILITARY, NURSES, PHYSICIANS, DENTISTS,
ENGINEERS, PHARMACISTS, SCIENTISTS

Kardaras Insurance

LKardaras@FarmersAgent.com

Learn more at [Facebook.com/KardarasInsurance](https://www.facebook.com/KardarasInsurance)

PLEASE DON'T FENCE ME IN

In case you didn't know, I'm more than just a Mistletoe Heights' area Realtor—I represent buyers and sellers all over Fort Worth, Tarrant County and beyond.



*Call me with all
your real estate
needs & questions.
Gayle Reed*



817-688-1952
gayle.reed@cbdfw.com



President's Corner

Continued From Page 1

I think we all can agree that familiarity with neighbors far outweighs cluelessness about them, that a close-knit community trumps one steeped in anonymity and insularity. A directory, of course, won't accomplish all of this. People do. But without the directory, I doubt we can build these foundations that we hope leads to something real. To friendships, to some sense of community spirit, to a fresh attentiveness to the people, animals, events, and dwellings in this place we call home. Look for your directory soon. Get connected. Be more engaging. We have lots of avenues to help make this an easy process. Join us as we make an effort to clean up our neighborhood and improve quality of life for us all.

1. Facebook Chat Room:
www.facebook.com/groups/mhneighbors
2. NextDoor Page:
www.mistletoeheights.nextdoor.com
3. Webpagegae: www.mistletoeheights.org/contact
4. Next Neighborhood Meeting (February 18 @ 7:00)
5. The back of the Newsletter

- Kyle Jensen, MHA President

City Roofing Company

Established 1964

Residential Roofing Specialists

No-Charge Estimates ♦ Reroof ♦ Repairs ♦ Inspections

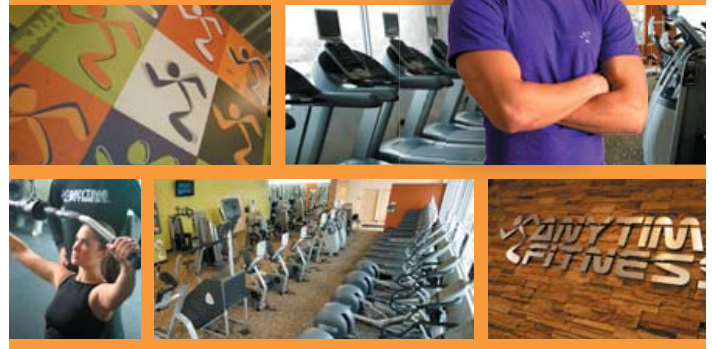
817-738-1756

Maia Wright Jourde
Harpist
Performer and Instructor

www.gigmasters.com/Maia

817-207-0802 arjourde@sbcglobal.net
2337 Mistletoe Avenue, Fort Worth, 76110

**A BRAND NEW CLUB
JUST CAME TO TOWN.
DISCOVER ANYTIME FITNESS!**



SIGN-UP NOW FOR OUR LOWEST RATES EVER!

- Access to more than 1,800 clubs worldwide
- 24/7 free virtual training
- Activity and diet tracking apps
- Personal and group training programs

Sign-up today for this limited time offer:

BRING IN THIS AD FOR CHARTER MEMBERSHIP OFFER!

Join the family – call or stop-in today!

1714 8th Avenue
Fort Worth, TX 76110
817-207-0900
AnytimeFitness.com

SOME RESTRICTIONS APPLY. OFFER EXPIRES 2-28-2014.





Special Events Come In All Varieties

Indulge your love of nature with BRIT®'s free family events, special education seminars and our exclusive conservation award luncheon.



**BOTANICAL RESEARCH
INSTITUTE OF TEXAS®**
Plant to planet.®

817.332.4441 | Follow us @BRIT_org | Facebook.com/BRITorg
1700 University Drive | Fort Worth, TX 76107-3400

January 25

Agriculture College Day

Free high school student event hosted by BRIT and the Fort Worth Stock Show & Rodeo

February 1 | March 1

BRIT First Saturday

A free family fun event featuring hands-on, learning activities and Bella's Story Time

February 20

Special Author Presentation

The Drunken Botanist: The Plants that Create the World's Great Drinks. Author Amy Stewart explores the plants that humans have contrived to transform into alcohol. \$25 members/\$30 non-members

March 28

2014 BRIT International Award of Excellence in Conservation

BRIT honors Dr. Thomas E. Lovejoy, TCU, Sundance Square and John Merrill. Get your tickets now at www.BRIT.org or call 817.332.4441.



Pavani Bellary, DO



Stephanie Hiraki, DO



Aasia Janjua, MD



Niraj Mehta, DO



Morvarid Rezaie, DO

Get your FLU SHOT today!
\$25

**NO APPOINTMENT REQUIRED
FOR FLU SHOTS**

Most insurance accepted,
including Medicare Part B

Our board certified physicians want to take care of all your **primary care** needs - right here in your own neighborhood! Since continuity of care is ideal - our doctors are available **for you** at all major downtown Fort Worth hospitals, rehabilitation facilities and a SNF/nursing home.

2260 College Avenue, Fort Worth, TX 76110

TEL 817-870-DOCS (3627)

FAX 817-870-3636

www.associatesofinternalmedicine.com

www.edwardjones.com

No Time Like the Present to Keep Your Future on Track

Lots of times, changes in life also affect your investments. That's why there's never been a better time to schedule your free portfolio review. We'll talk about the changes in your life and help you decide whether it makes sense to revise your investments because of them.

A portfolio review will help ensure your investments are keeping pace with your goals. Call your local financial advisor today.



Bruce C Border, CFP®
Financial Advisor

2453 Forest Park Boulevard
Ft Worth, TX 76110
817-926-8056

Edward Jones®
MAKING SENSE OF INVESTING

Member SIPC

urbanYOGA

NIA

BARRE

urbanYOGAfw.com

1706 8th avenue, fort worth

817-908-flow

urbanYOGA

Jeri Jo Blackmon Professional Tax Services

817-923-4393

Email: JeriJo@charter.net
Enrolled Agent licensed by the IRS

1408 Mistletoe Drive
Fort Worth, TX 76110

Cell: 817-925-7833
Fax: 817-924-7733

Farewell and Welcome

The 2200 block of Mistletoe Avenue is losing a great neighbor to Minneapolis. Clint Newell has taken a new job at the Stratasys Corporation, and his wife, Janna, and their daughter will be joining him. Several neighbors wanted to wish them bon voyage, so we met at the home of Sharon and Garrett Whitney to enjoy an evening together. Robyn and Walter Virden and their two children were special guests, as Robyn and Walter lived on Mistletoe Avenue before they moved to Magnolia (still in Mistletoe Heights!). It was a great time to get together, food was shared as were many laughs.

Brian and Kathryn Perry (and children), who currently live on West Rosedale, will be our new neighbors.



THE BANK NEXT DOOR

Bank closer to home at Southwest Bank's
Midtown Banking Center, at the corner
of West Rosedale and Jerome.



Lori Baldock
President
Commercial Lender
817.916.6110



MIDTOWN BANKING CENTER
2201 MIDTOWN LANE
FORT WORTH, TX 76104
817-916-6100
SouthwestBank.com

Member FDIC

We Need Your Help!

We need a **neighborhood historian!** The association is looking for someone to research the history of our neighborhood.

We need an **advertising representative.** The ad rep is responsible for keeping track of ads for each newsletter issue and contacting advertisers to follow up on payment, ad files, and encouraging past advertisers to consider advertising with us again.

We need someone to take over the **Yard of the Month** responsibilities. We will no longer be including a write up of the Yard of the Month winners. The volunteer will simply have to choose a winner and notify the homeowner.

If you'd like more information, contact
Kyle Jensen at 940.367.1428 or
president@mistletoeheights.org.

Join the Mistletoe Heights Email List!

To subscribe to the Mistletoe Heights Residents mailing list, go to mistletoeheights.org, click on "Email list" and look for "Subscribing to Residents." Enter your name and email address, and then click "Subscribe." Note: You may need to add residents-bounces@mistletoeheights.org to your address book to receive emails. If you have questions or concerns, contact [moderator@mistletoeheights.org](mailto:mistletoeheights.org).

Check out our website: mistletoeheights.org
Join us on Facebook: facebook.com/mistletoeheights

Mistletoe Heights Association Income & Expenses - Previous Year Comparison January through December 2013

| | Jan - Dec 13 | Jan - Dec 12 |
|--|------------------|------------------|
| Income | | |
| Advertising Income - Directory | 2,160.00 | 0.00 |
| Advertising Income - Newsletter | 7,256.00 | 7,626.00 |
| Christmas Cards | 0.00 | 45.00 |
| Dues Donations | 7,002.00 | 4,741.00 |
| Interest Income | 4.93 | 1.34 |
| Total Income | 16,422.93 | 12,413.34 |
| Expense | | |
| Bank/Check Fees | 71.21 | 4.01 |
| Christmas - Street Lite Decor | 458.29 | 515.21 |
| Directory | 29.99 | 0.00 |
| Easter Egg Hunt | 371.60 | 222.77 |
| Flag Program - Triangle | 120.00 | 120.00 |
| Garage Sale Expenses | 69.96 | 0.00 |
| July 4th Celebration | 144.50 | 0.00 |
| Maintenance - Newby, Berm, etc. | 0.00 | 1,607.14 |
| MHA Christmas Party | 0.00 | 52.50 |
| MHA Entrance | 0.00 | 193.45 |
| MHA Meetings | 413.03 | 280.00 |
| Movie Night | 592.31 | 0.00 |
| Neighborhood Activities | 64.54 | 158.39 |
| Neighborhood Cleanup | 15.84 | 0.00 |
| Newsletter Expenses | 4,747.57 | 5,600.91 |
| Traffic Committee Expenses | 0.00 | 961.79 |
| Water Expense - Newby | 1,902.27 | 1,893.02 |
| Welcome Baskets | 174.17 | 279.50 |
| Total Expense | 9,175.28 | 11,888.69 |
| Net Income | 7,247.65 | 524.65 |
| Bank Balance 12/31/13 - \$28,213.50 | | |



Ruth Story

Trusted... Reliable... Experienced

We asked clients about their real estate experience with Ruth...
Here are some of their comments:

"Ruth far exceeded our expectations"

"Ruth went above & beyond - 100% satisfied"

"Open to us and listened well"

"We trust her marketing skills"

"Helpful, available and honest"

"Her professionalism on every level was exemplary"

"Friendly and extremely responsive"

"Ruth has truly redefined what I previously expected from a realtor"



(817) 992-9232

AskRuthStory@gmail.com

www.RuthStoryOnline.com

You've Found Your Realtor!



Ruth Story, Broker Associate
CNE - Certified Negotiations Expert
ILHM - International Luxury
Home Marketing

Keller Williams Real Estate
2813 S. Hulen Street, Suite 150
Fort Worth, TX 76109

Neighbors:

Help us cheer on the runners on February 23, 7:30AM at the corner of Forest Park and Park Place. It's the halfway mark and they need our support. We will have poster boards, markers, coffee, donuts, Kolaches, and lots of spirit. Show your love for the neighborhood.

2224 Park Place Avenue
7:30AM-10:30AM

Support Our Advertisers!

The officers of the Mistletoe Heights Association encourage you to support the businesses that advertise in our newsletter. These organizations pay to be in our newsletter and support our neighborhood. Their business also makes this publication possible; without them we would not be able to provide printed newsletters to every household in the neighborhood free of charge.

PARK PLACE PHARMACY

Business Hours:
Monday - Friday
9:00am to 6:00pm

Closed Weekends
& Holidays

Craig Nicholson, RPh
Monique Nicholson, RPh

Your Neighborhood Pharmacy

Phone: 817-924-9292
Fax: 817-924-9264

1601 Park Place Ave, Suite B
Fort Worth, TX 76110-1303



**Catholic
Charities**
Fort Worth

International
Foster Care

Would you be willing to open your heart and home to an international youth in need?

International Foster Care partners with DFW families to provide safe, nurturing, and culturally sensitive foster homes to refugees, asylees, victims of human trafficking, and unaccompanied migrant youth.

How can you get involved in CCFW: International Foster Care?

- Become a Foster Parent
- Tutor After School
- Mentor a Youth
- Provide Donations
- Create Welcome Boxes
- Spread the Word
- Host an Event
- Become a Respite Provider



For more information contact
817.289.0461 or ifc@ccdofw.org

CatholicCharitiesFortWorth.org/ifc

**Family looking to find a
home in the area. Interested
in restoration. Please
contact:**

Sabrina 817-343-7173
unoball@sbcglobal.net.

Fun Runs in the Area

Electric Zombie Run
Saturday, February 15, 8 am
runontexas.com

The Graffiti Run
Sunday, February 16, 9 am
runontexas.com

Cowtown Marathon 10K/5K
Saturday, February 22, 7 am
runontexas.com

5th Annual Boopa's Family 5K/10K
Saturday, March 29, 8 am
runontexas.com

In the Cultural District

Amon Carter Museum of American Art

iHombre! Prints by José Guadalupe Posada through April 6
Sederick Huckaby: Hidden in Plain Site through February 2
John Albok's Neighborhood through February 23
Texas Regionalism ongoing

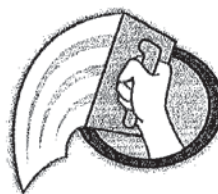
Kimbell Art Museum

Permanent Collection

The Age of Picasso and Matisse through February 16
Samurai: Armor from the Ann and Gabriel Barbier-Mueller Collection February 16 through August 17

Modern Art Museum of Fort Worth

Focus: Fred Tomaselli through March 2
David Bates February 9 through May 11



Mark Van Zee Masonry
Masonry, Plaster, Tile, and Historic
Restoration

Mark Van Zee
Owner

700 Emerald Sound blvd.
Oak Point, Texas
75068

940 453 8628

mark@vanzeemasonry.com

Mediterranean flavors infused with Southern Hospitality.



CHADRA
MEZZA & GRILL

Southern Hospitality. Mediterranean Flavor.
1622 Park Place Avenue | www.chadramezza.com
Fort Worth, TX 76110 | 817.924.2372

FREE CLASSIFIED ADS

HOME WANTED

We'd like to buy a home (3+bed/2+ bath) around Lily B. Clayton or Tanglewood area for Spring/Summer 2014. Please call Lidia or Todd Bowers at 469.879.5172.

ESTATE SALE SERVICES

Estate Sales & Appraisals Experienced, reliable estate sales in and out of Mistletoe Heights since 1992. Certified Appraiser, International Society of Appraisers. Appraisals for insurance, estate evaluations, donations; whatever your needs.

Contact: Terri Ellis, Mistletoe Estate Sales, 817-926-9424 or email tqilts@mac.com

PIANO LESSONS

For beginners and intermediates. Mary Smith, 2300 W. Magnolia Ave. 817-927-8876.

COMPLETE PROPERTY RENOVATION: Demolition, cleanup, specializing in historic home renovations, painting, wallpaper. Contact Jeff Cuningham at 817-988-7113.

HANDYMAN IN YOUR

NEIGHBORHOOD No job is too small. I live on Edwin and have local references. Have over 30 Years experience in remodel. Call Terry

817.454.1795 free estimates!!

ADULTS ENJOYING THE PIANO TOGETHER

- We focus on music & joy! Newbies ~ piano wannabes ~ relearners. Keyboard skills, music reading made easy, drumming, and moving to the music. 8-week workshops on weekday mornings at Arts Fifth Avenue in Fairmount. FREE preview classes. For more info visit our website at www.AdultMusik.com or contact Carol Spencer at 817.927.3240 or carolingfw@sbcglobal.net.

TUTOR, K-3rd grade. Caring, encouraging, experienced (12 years) certified elementary school teacher is offering tutoring this summer.

Contact Kathy Jo Rogers at 817.688.0905 or kathyjorogers@sbcglobal.net.

MISTLETOE HEIGHTS PET SITTERS is now booking for your vacation, or any other time. References available on request.

Mistletoeheightspetsitters.com or 817-247-2870

26 YEARS EXPERIENCE IN TEACHING. Tutoring Pre-K-2nd Grade. Is your child falling behind? Need some one-on-one attention? Don't want your child to lose what they've learned over the summer? I can help! Call Joy Ridler at 817.637.5541.

LEARN TO SWIM LESSONS

-With emphasis on Olympic strokes. Contact Richard Sybesma, Head Swim Coach, TCU Box 297600, Fort Worth, TX 76129; 817-257-5646 or 817-257-7963

HARPIST: Sally Sledge ministers on the harp as a worshiper, psalmist and vocalist. She has recorded two CDs: "Return to Your Rest" and "Cherished Times". She is available to play for home groups, church events, Bible studies, weddings, funerals, dinner parties or any special occasion. For more information and song samples, you may access her web site at www.sallysledge.com.

TAX PREPARATION

Jeri Jo Blackmon, former IRS Agent and current Enrolled Agent licensed by the IRS will prepare and e-file your individual or business tax returns. Also, as a QuickBooks Pro Advisor, training is available for individuals or businesses who want to improve their skills or learn new skills using QuickBooks accounting software.

Contact Jeri Jo Blackmon at 817-923-4393 or email JeriJo@Charter.net. 1408 Mistletoe Drive.

HOME WANTED We'd like to buy a home - from an owner - no agents, please! 817-732-3836.



GREAT CAR BUYING EXPERIENCE

BOB BOURLAND MISTLETOE HEIGHTS NEIGHBOR

- Frank Kent Honda Sales Associate for over 9 years
- Gold Master for the last five years, the top award given by Honda
- TCU graduate
- Retired from Tandy Corporation/Radio Shack
- Married for 48 years

rd.bourland@yahoo.com
cell 817.266.7693 | work 817.696.4144



FRANK KENT
HONDA

3400 West Loop 820 South
Fort Worth, TX 76116
FrankKentHonda.com

Helpful Phone Numbers, Emails, Addresses and Websites

City information

| | |
|------------------------------|--------------|
| City Code violations | 817.392.1234 |
| City of Fort Worth | 817.392.2255 |
| fortworthtexas.gov | |
| Police—nonemergency | 817.335.4222 |
| Garage sale permits | 817.392.7851 |
| Graffiti abatement | 817.212.2700 |
| Lily B. Clayton Elementary | 817.922.6660 |
| schools.fwisd.org/clayton | |
| Paschal High School | 817.814.-000 |
| paschalhs.org | |
| Historical Preservation | |
| Liz Casso | 817.392.8037 |
| liz.casso@fortworthtexas.gov | |
| Southside Preservation Hall | 817.926.2800 |
| Hallyes@earthlink.net | |
| southsidepreservation.com | |
| The T/Longhorn Trolley | 817.215.8600 |
| the-t.com | |
| Trinity Railway Express | 817.215.8600 |
| trinityrailwayexpress.org | |
| City Council District 9 | |
| Joel Burns | 817.392.8809 |
| district9@fortworthtexas.gov | |

MHA officers

| | |
|------------------------------------|--------------|
| officers@mistletoeheights.org | |
| President | |
| Kyle Jensen | 940.367.1428 |
| president@mistletoeheights.org | |
| Vice President | |
| Ben Belsher | 817.919.8375 |
| vicepresident@mistletoeheights.org | |
| Secretary | |
| Valerie Ewing | 817-719-9535 |
| secretary@mistletoeheights.org | |
| Treasurer | |
| Jeri Jo Blackmon | 817.923.4393 |
| treasurer@mistletoeheights.org | |
| Newsletter Editor | |
| Stefanie Ball Piwetz | 817.201.1909 |
| newsletter@mistletoeheights.org | |

Volunteers

| | |
|------------------------------------|--------------|
| Historic Preservation Committee | |
| Roger Ross | 817.372.6865 |
| Street Rep Captains | |
| Melissa Kohout (East side) | 817.313.1419 |
| Rosaline Eastepp Takes (West side) | 817.207.9750 |
| Welcome Baskets | |
| Kathy Jo Rogers | 817.688.0905 |
| Diana Brandenburg | 214.734.9140 |
| Advertising Manager | |
| advertise@mistletoeheights.org | |
| Newby Park | |
| Marjorie Day | 817.914.8057 |
| Email Moderator | |
| Richard Yantis | 817.924.2857 |
| Webmaster | |
| Scott Ewing | 214.403.7762 |

Street reps (listed by blocks)

| | |
|---------------------------|--------------|
| East of Forest Park | |
| 2200 W. Rosedale South | |
| Dottie Guffey | 817.921.6288 |
| 2200 Irwin | |
| Gary Willis | 817.924.4000 |
| 2100/2200 Mistletoe Blvd. | |
| Melissa Kahout | 817.313.1419 |
| 2100/2200 West Magnolia | |
| Colleen Shutt | 214.455.9097 |
| 2200 Harrison | |
| Aaron Torkelson | 817.907.5533 |
| 2100 Harrison Ave. | |
| Vacancy | |
| 2100 Mistletoe Ave. | |
| Pat Hale | 817.924.5263 |
| 2200 Mistletoe Ave. | |
| Richard & Christi Yantis | 817.924.2857 |
| 2100/2200 Edwin | |
| Katrina Pittman | 817.921.2221 |
| 2100 Weatherbee | |
| Judy Gude | 817.926.8843 |
| 2200 Weatherbee | |
| Susan Harwell | 817.923.8806 |
| 2100 Morphy | |
| Vacancy | |
| Forest Park Blvd. | |
| Steve McReynolds | 817.926.7955 |
| West of Forest Park | |
| 2300 W. Rosedale South | |
| Kimberly Helixon | 817.927.4641 |
| 2300 Irwin | |
| Sue Duvall | 817.926.8714 |
| 2300/2400 Mistletoe Blvd. | |
| Lisa Stewart | 817.924.9666 |
| 2300 West Magnolia | |
| Susan Pressley | 817.923.6061 |
| 2300/2400 Harrison | |
| Robert DeVargas | 817.923.9393 |
| 2300 Mistletoe Ave. | |
| Jason Fuller family | |
| 2300 Edwin | |
| Grant Pannell | 817.924.0051 |
| 1100 Clara | |
| Marc & Kathy Jo Rogers | 817.923.3304 |
| 1200 Clara | |
| Betty Arvin | 817.924.7088 |
| 1100 Buck | |
| Kate Herring | 817.923.3843 |
| 1200/1300 Buck | |
| Trisha Dianne Stemple | 817.926.6546 |
| Mistletoe Drive | |
| Meralen & Gerry Tyson | 817.926.5909 |
| 2300 Mistletoe Drive | |
| Chris Fershtand | 817.923.8422 |
| Carol Benson | 817.921.4000 |

Neighborhood police officers

| | |
|------------------------|--------------|
| Sidney Keith (West) | 817.944.1038 |
| David Cloninger (East) | 817.992.0181 |

MHA yearly memberships

Voluntary dues are \$15, \$25, \$50 or whatever you can afford. Your dues help pay for this newsletter, the Mistletoe Heights phone directory and many neighborhood functions. Please make your check payable to Mistletoe Heights Association. Mail to: Jeri Jo Blackmon, 1408 Mistletoe Drive.

Free classified ads

As a MH resident, you get one free classified ad. Please submit copy by the 15th of the month. Notify the editor at 817.201.1909 or email: newsletter@mistletoeheights.org.

Editorial policy

Articles and letters to the editor are welcomed. To be published as written, letters must be addressed to the editor, signed, and include a phone number.

Anonymous letters will not be published. Articles may be submitted for publication, signed or unsigned, subject to approval and editing.

Contact information helps, especially if we have questions for you.

Letters to the editor are limited to a half-page (approximately 350 words). Please send email to: newsletter@mistletoeheights.org.

Advertising information

To place an advertisement or for actual mechanical sizes, please email:

advertise@mistletoeheights.org

Rates:

Business-card size \$25

1/4 page \$50

Half page \$100

Full Page \$200

Pre-printed inserts \$100

8 1/2 x 11

Deadline for ads, payment and artwork is the tenth of the month.