



Mistletoe Express

Happy Holidays

Dec 2013 Jan 2014
www.mistletoeheights.org

PRESIDENT'S CORNER

Life moves at such a fast pace that it seems to pass us by before we can really enjoy it. This past year as your president has come and gone, and I feel blessed to have the opportunity to represent our great neighborhood. I have met so many wonderful friends. I began to list them here but then quickly realized the list is too long. I want to thank all of you for being my backbone. I want to share a poem for all those who have helped in making the neighborhood better this past year.

“Once there was a wall that divided many. The wall came down but some pieces still remain. The world is so big and we are all so small. Sometimes it feels like we can’t do anything, but the world can be better in spite of our flaws. The world can be better and you’ll be the cause, even though many times the waves are bigger than our boats. The wind keeps us sailing; its love gives us hope. Some days its dark but we’ll keep rowing because people like you keep whispering, “Keep going, keep going keep going!” And it’s because of you, you keep us going. Who keeps you going? Tell them, “Keep going, keep going, keep going!”



Kyle Jensen

I want to challenge you to keep going and continue to help our community. The past year has brought us so much. We have met new neighbors. We have gone on walks. We fixed up our properties. We hosted a block party. We built a garden. We ventured into social networking. We added a web-based home gallery. We had musical jam sessions. We hosted “Halloween” for the city of Fort Worth, at least it felt that way. We made dues donations available online. We setup the Little Free Library and recognized our memory of a beloved resident.

We had movie nights, parades, concerts, bike rides, gift exchanges, socks for the homeless, a neighborhood cleanup, created MH thank you card, made our streets more neighborhood friendly, decorated for Christmas, shared meals, fed the homeless, created a neighborhood slogan, painted chairs for a better block event, setup a cheer station for racers coming through, and much more. More importantly, we continued the legacy of what our neighborhood is most known for—COMMUNITY. We celebrated the residents of Mistletoe Heights. As we move forward into the holiday season, it is time to reflect and to focus on family and friends.

The holidays are time for family, being neighborly, and giving thanks. I don’t know about you but I plan to slow down and enjoy life during this holiday season. This means taking the time to enjoy the mornings, instead of rushing off to work in a time-crunched frenzy. It means taking time to enjoy whatever you’re doing, to appreciate the outdoors, to actually focus on whomever you’re talking to or spending time with—instead of always being connected to a phone or laptop, instead of always thinking about work tasks and emails. It means single-tasking rather than switching between a multitude of tasks and focusing on none of them.

Slowing down is a conscious choice, and not always an easy one, but it leads to a greater appreciation for life and a greater level of happiness. Here’s how I plan slow down and live in the moment.

Continued on page 10

Inside This Issue:

Page 2-4 - What’s Up in the Neighborhood, Slogan Contest Winner

Page 5 - YOM, Photos
Page 6 - Little Free Library
Page 7-8 - Jerome Street Townhouses

Page 9-11 - Photos, President’s Message Cont’d
12-14 Deck the Heights, We Need Host, Fun Runs

Page 15-17 - In the Cultural, Of Mice & Men, Minutes
Page 18-20 - MHA Supporters, Classifieds, Helpful Numbers

What's Up in the Neighborhood



Photos By
Jim Peipert



What's Up in the Neighborhood



Photos By Jim Peipert





New Neighborhood Slogan

Mistletoe Heights: “A Front Porch Community”



Wendy Blanton

Thank you to all those neighbors who participated in the slogan contest and congratulations to Kathy Jo Rogers (Clara St.) who won the drawing for the Walmart gift card!

More than just flowerpots, mail, and rocking chairs find a home on a Mistletoe Heights front porch. Our neighborhood front porches are relaxing front-row seats to historic beauty, the launching pads of treasured childhood memories, and the birthplace of lifelong friendships. Neighbor Wendy Blanton (West Magnolia Ave.) summarized this special aspect of our neighborhood with her winning tag line...Mistletoe Heights: A Front Porch Community.

“I think the slogan captures both the important role that architecture plays in Mistletoe Heights and our strong sense of community,” commented Wendy. “I think our neighborhood takes pride in both of those elements, and we truly do use our porches to congregate and visit with each other.”

Throughout the month of October, twenty-six neighbors like Wendy submitted 108 creative slogan entries to summarize Mistletoe Heights in just a few words. Our association board members then reviewed the list (without authors’ names attached) and ranked their top ten. There were only 20 slogans from the total list that received any rankings by the board, and seven of those 20 had been picked by three or more board members. Those seven became the final slogans presented for voting at our November 19 neighborhood meeting.

“I loved the process of coming up with a tag line for our neighborhood,” said Martin Herring (Irwin Street) who submitted more than 20 unique slogans. “It was easy to come up with a lot of slogans because there are so many positive ways to describe our neighborhood.” Martin, his wife Gay, and daughter Kate moved to Mistletoe Heights in 1990 after falling in love with it when his sister, Gaye Reed, moved here in 1976.

“We are a front yard neighborhood and we all get to know each other that way,” continued Wendy, who has lived here for ten years with her husband Alex and children Kate (12) and Lucy (8). Her in-laws, Paul and Carol Blanton are also Mistletoe neighbors. “We call spring the Neighbor season because of that. As you step out your door you are greeted warmly, and before you know it, you are parking yourself on the front porch to enjoy a glass of wine with a neighbor.”

Martin added, “I think we got the perfect slogan in Wendy’s entry because it captures so much, so simply. Mistletoe is a very rare and special place in today’s world. Don’t take it for granted. It is our good fortune to be part of it.”

The six other finalists (of the 108 slogans submitted) below also received a number of votes each:

- Mistletoe Heights: History, Beauty, Community (Mark Rogers)
- Mistletoe Heights: Where Your Neighbors are Your Friends (Beth Krugler)
- Mistletoe Heights: Where “Neighborhood” Still Means Community (Shelley Hardell)
- Mistletoe Heights: A Neighborhood of Historic Proportions (Susan Sippel)
- My home, my heart, my Mistletoe Heights (Martin Herring)
- Mistletoe Heights: Where the Holiday Spirit Never Ends (Beth Krugler)



Photo By
Jim Peipert

Association President Kyle Jensen is greeted on his front porch by our neighborhood Welcome Committee helpers (from left to right): Charlie Rodman, Zack Neuweiler, Adley Rodman, Beth Krugler and Zack Marcus. Our Welcome Committee greets all of our new neighbors on their porches with a basket full of goodies.

The Yard of the Month

2230 Mistletoe Drive

December Yard of the Month goes to Dina and Matt Goetz. The Goetzes are located at 2320 Mistletoe Dr. They just moved into Mistletoe Heights three months ago from Berkeley. Dina has worked in the FWISD Libraries for years and Matt is a business litigation attorney. The Goetzes were chosen for the December Yard of the Month because of how well their yard and plants are maintained during this time of year. They do all of their own yard work and have plenty of geraniums, begonias, and ferns. They also recently replanted some hydrangeas.

- William Ritter



Photos By Jim Peipert

Spotlight on Mistletoe Heights

Little Free Library dedicated to neighbor who died of cancer



Irene Stemple places the first book in the library, which is dedicated to her late husband Norman.

Star-Telegram/Rodger Mallison

Star-Telegram

FORT WORTH — Celebrating the life of a beloved neighbor recently took a literary turn in Mistletoe Heights.

A group of residents in the near south side neighborhood decided that a fitting memorial to their dear friend, Norman Stemple, who died last year of cancer, would be to put up a Little Free Library, a dollhouse-size box perched on a pole for the exchange of books.

Building and installing the library became a community project.

Using materials donated by Ralph Watterson, owner of Old Home Supply, Edward Herring and former *Star-Telegram* editor Jim Peipert actually built the Little Free Library.

Stemple's daughter, Trisha Dianne, provided a piece of

Plexiglas engraved with a tribute to her father to serve as the door, and *Star-Telegram* photographer Rodger Mallison fabricated the steel mounting pole. His wife, Carol, decorated the sides of the library with artwork.

Last weekend, several neighbors planted the pole in a neighborhood green space, attached the library and wrapped it in black plastic in advance of an unveiling ceremony.

On Tuesday evening, the first anniversary of Stemple's death, neighbors bearing books — including daughter Trisha and widow Irene — gathered in the chill weather to unveil the library, fill it with books and say kind words about Stemple, who had lived in Mistletoe Heights for 45 years.

The Little Free Library



A Little Free Library was dedicated to beloved long-time neighbor Norman Stemple.

movement started several years ago in Hudson, Wis., has snowballed into a feel-good national phenomenon that packs literacy, neighborhood bonding, civic pride and artistic creativity into one tidy package.

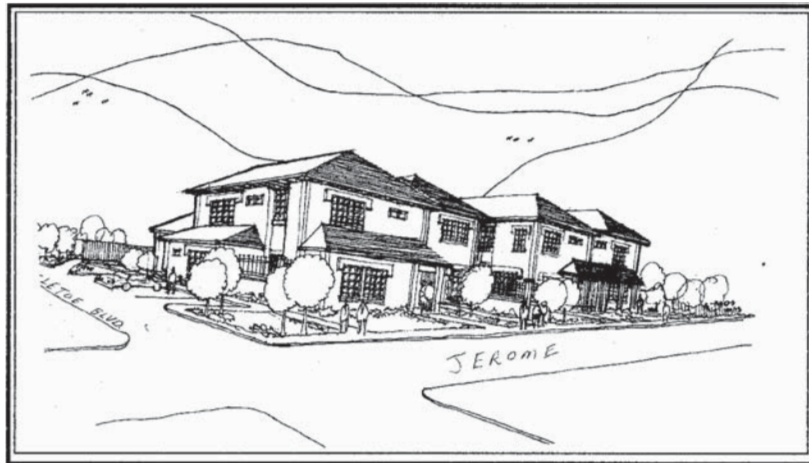
Now more than 2,500 whimsical libraries are open in yards, parks, businesses, schools and even a mobile RV-based branch out of Austin.

This story contains material from the *Star-Telegram* archives.

The owner of the vacant lot at the southeast corner of Mistletoe Blvd and Jerome St, Price Hulsey, has presented plans to both our neighborhood executive committee and our development/apartment committee for the development of four new townhomes on his lot. During the committee meetings with Mr. Hulsey, our committee offered some suggestions to the plans in order to match the neighborhood better and he welcomed the suggestions and agreed to make a couple of changes to the plans. These changes include moving the garages entrances off either street and adding a planting strip between the street curb on Jerome and the new sidewalk (NOTE that the plans shown on pages 7-8 does not yet reflect this planting strip).

In order to develop townhomes on the lot, Mr. Hulsey has submitted for a zoning change with the city to change the zoning from I-Light Industrial to UR-Urban Manor and signs will be posted on the property in November or December in advance of the city zoning meeting in December.

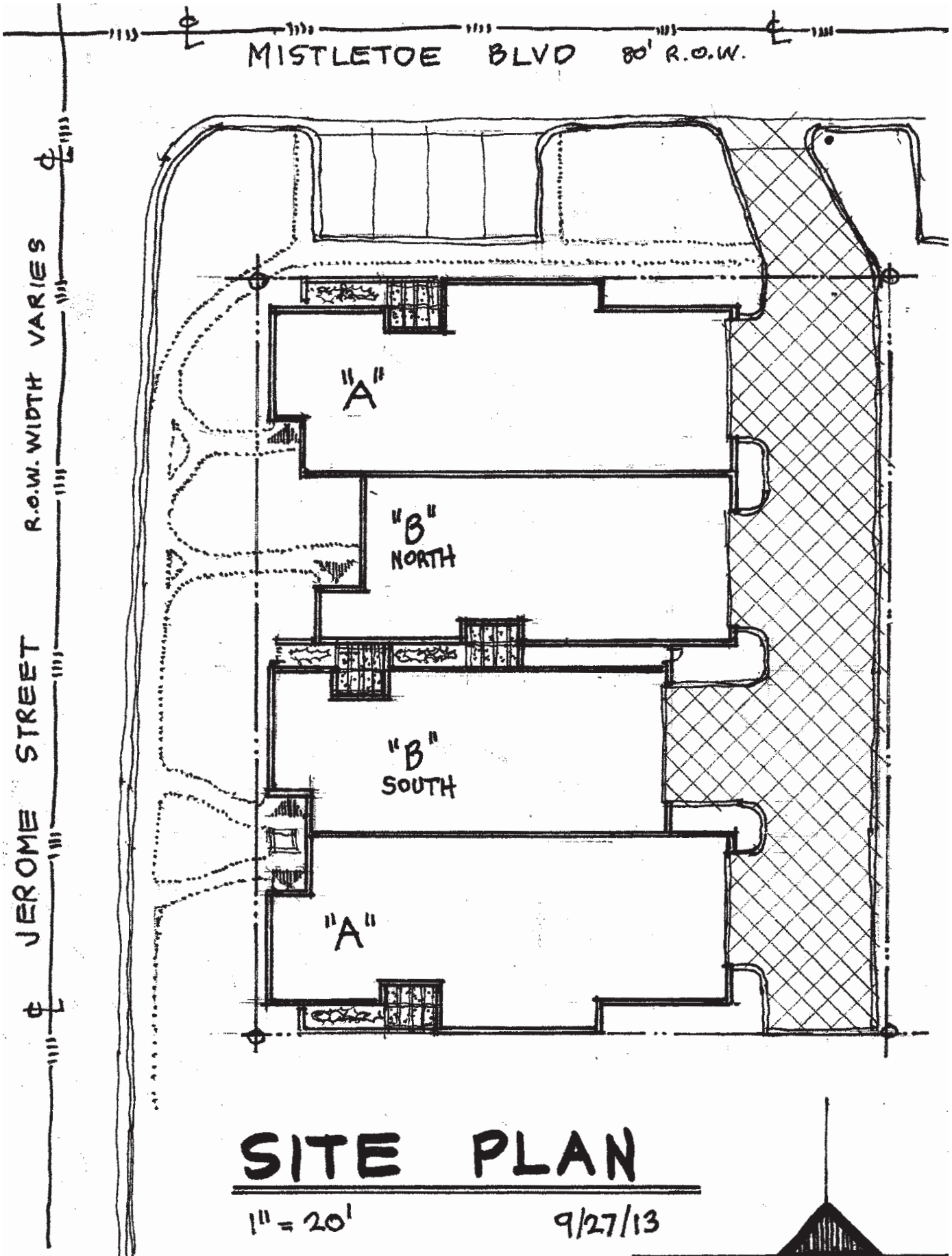
If you have questions, concerns or suggestions, please contact Price Hulsey at pricehulsey@fwlsc.com, phone:817-313-3396, or Ben Belsher at benbelsher@yahoo.com, phone:817-919-8375.



Mistletoe Townhomes

Mistletoe Blvd. & Jerome
Price Hulsey
817-313-3396

- Four Townhomes Approximately 2,500 Sq. Ft. Each
- Attached Two-Car Garages
- Four Off-Street Guest Parking Spaces
- Private Courtyards, Wood Floors, Granite Counters, & High Ceilings
- Owner Developed & Managed
- Applying for Zoning Change From I-Light Industrial to "Planned Development"



SITE PLAN

1" = 20'

9/27/13





RESIDENTIAL & COMMERCIAL

Real Estate Brokerage Services



Will Northern,
Broker/Owner

817-920-0000

northernrealtygroup.com



Moving Real Estate in the Right Direction



Bow Tying Party



Photos By Jim Peipert

Celebrating Sweet 16

**Old
Neighborhood
Grill**




FARMERSSM
INSURANCE
AUTO • HOME • LIFE • COMMERCIAL



Larry Kardaras, Agent/Owner

817-377-9941
3341-B Winthrop Avenue
Fort Worth Texas, 76116

*New! Lower Auto Insurance Rates
Discounts for New Home/New Roof
Whole & Term Life Products*

Ask about Professional Discounts for:
TEACHERS, POLICE OFFICERS, FIREFIGHTERS,
MILITARY, NURSES, PHYSICIANS, DENTISTS,
ENGINEERS, PHARMACISTS, SCIENTISTS

Kardaras Insurance
LKardaras@FarmersAgent.com
Learn more at Facebook.com/KardarasInsurance

1633 Park Place
In Park Place Village
Between 8th Ave and Forest Park

817-923-2282

Open 7a - 9p • Mon - Sat

Photos By Jim Peipert



Bow Tying Party



President's Corner

Continued From Page 1

Do less. It's hard to slow down when you are trying to do a million things. Instead, make the conscious choice to do less. Focus on what's really important, what really needs to be done, and let go of the rest. Put space between tasks and appointments, so you can move through your days at a more leisurely pace.

Be present. It's not enough to just slow down; you need to actually be mindful of whatever you're doing at the moment. That means, when you find yourself thinking about something you need to do, or something that's already happened, or something that might happen, gently bring yourself back to the present moment. Focus on what's going on right now. On your actions, on your environment, on others around you. This takes practice but is essential.

Disconnect. Don't always be connected. If you carry around an iPhone or Blackberry or other mobile device, put it down and turn it off. If you work on a computer most of the day, have times when you disconnect so you can focus on other things. Being connected all the time means we're subject to interruptions, we're constantly stressed about information coming in, we are at the mercy of the demands of others. It's hard to slow down when you're always checking new messages coming in.

Focus on people. Too often we spend time with friends and family and we're not really there with them. We talk to them but are distracted by devices. We are there, but our minds are on things we need to do. We listen, but we're really thinking about ourselves and what we want to say. None of us are immune to this, but with conscious effort you can shut off the outside world and just be present with the person you're with. This means that just a little time spent with your family and friends can go a long way—a much more effective use of your time, by the way. It means we really connect with people rather than just being in the same room with them.

Appreciate nature. Many of us spend our days in our homes, offices, and cars, and we rarely get the chance to go outside. Take the time to go outside and really observe nature, take a deep breath of fresh air, enjoy the serenity of the river and greenery, and leave your phone at home. Exercise outdoors when you can, or find other outdoor activities to enjoy such as a nature walk to the botanic garden or zoo, swinging at the park, etc. Take time everyday to go outside.

It has been a great year of service. I have truly enjoyed serving the residents of Mistletoe Heights. I would still like to meet you. I would like to know your thoughts and ideas:

- Our Facebook Chat Room:
www.facebook.com/groups/mhneighbors
- On the back of your newsletter (drop me an email)
- Our webpage www.mistletoeheights.org/contact
- Our next members meeting (February 18 @ 7:00)

Join us as we make an effort to clean up our neighborhood and improve the quality of life for all those that live here.

Kyle Jensen, MHA President

City Roofing Company

Established 1964

Residential Roofing Specialists

No-Charge Estimates ♦ Reroof ♦ Repairs ♦ Inspections

817-738-1756

Maia Wright Jourde

Harpist

Performer and Instructor

www.gigmasters.com/Maia

817-207-0802 arjourde@sbcglobal.net
2337 Mistletoe Avenue, Fort Worth, 76110



Special Events Come In All Varieties

Indulge your love of nature with BRIT®'s free family events, special education seminars and our exclusive conservation award luncheon.



**BOTANICAL RESEARCH
INSTITUTE OF TEXAS**
Plant to planet.

817.332.4441 | Follow us @BRIT_org | Facebook.com/BRITorg
1700 University Drive | Fort Worth, TX 76107-3400

January 25

Agriculture College Day

Free high school student event hosted by BRIT and the Fort Worth Stock Show & Rodeo

February 1 | March 1

BRIT First Saturday

A free family fun event featuring hands-on, learning activities and Bella's Story Time

February 20

Special Author Presentation

The Drunken Botanist: The Plants that Create the World's Great Drinks. Author Amy Stewart explores the plants that humans have contrived to transform into alcohol. \$25 members/\$30 non-members

March 28

2014 BRIT International Award of Excellence in Conservation

BRIT honors Dr. Thomas E. Lovejoy, TCU, Sundance Square and John Merrill. Get your tickets now at www.BRIT.org or call 817.332.4441.



Pavani Bellary, DO



Stephanie Hiraki, DO



Aasia Janjua, MD



Niraj Mehta, DO



Morvarid Rezaie, DO

Get your FLU SHOT today!
\$25

**NO APPOINTMENT REQUIRED
FOR FLU SHOTS**

**Most insurance accepted,
including Medicare Part B**

Our board certified physicians want to take care of all your **primary care** needs - right here in your own neighborhood! Since continuity of care is ideal - our doctors are available **for you** at all major downtown Fort Worth hospitals, rehabilitation facilities and a SNF/nursing home.

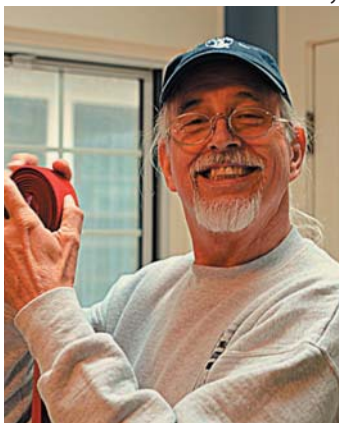
2260 College Avenue, Fort Worth, TX 76110

TEL 817-870-DOCS (3627)

FAX 817-870-3636

www.associatesofinternalmedicine.com

Photos By Jim Peipert



Bow Tying Party



What would you like to see in the newsletter?

We want your feedback! What topics would you like to see in the newsletter? Send us your suggestions: newsletter@mistletoeheights.org.

urbanYOGA
YOGA
NIA
BARRE

urbanYOGAfw.com
1706 8th avenue, fort worth
817.908.flow

Jeri Jo Blackmon
Professional Tax Services

817-923-4393

Email: JeriJo@charter.net
Enrolled Agent licensed by the IRS

1408 Mistletoe Drive
Fort Worth, TX 76110

Cell: 817-925-7833
Fax: 817-924-7733

Deck the Heights With Bows of Ribbon

Every year we decorate the neighborhood Streetlights for Christmas. I have a long list of volunteers some of which have been doing this for more than 20 years. I am assuming that last years volunteers are repeating this one-hour chore (If not please let me know ASAP!!)

There are, however a few blocks that have no volunteer so someone needs to step forward. It is a fun thing to do (kids love to help) all you need is access to a ladder and a free hour someday soon after Turkey Day.

Every thing else, including instructions, will be delivered to your doorstep.

The following blocks need a volunteer:
1200 Buck, 2200 Harrison
2200 Edwin, 2300 Mistletoe Ave, Jerome

Thanks - Steve McReynolds
817-926-7955 or mcreyno1@earthlink.net

www.edwardjones.com

When it comes to your to-do list,
put your future first.

Decisions made in the past may no longer be what's best for the future. To help keep everything up to date, Edward Jones offers a complimentary financial review.

A financial review is a great opportunity to sit face to face with an Edward Jones financial advisor and develop strategies to help keep your finances in line with your short- and long-term goals.

To find out how to get your financial goals on track, call or visit today.



Bruce C Border, CFP®
Financial Advisor
2453 Forest Park Boulevard
Ft Worth, TX 76110
817-926-8056

Edward Jones
MAKING SENSE OF INVESTING

Member SIPC

WELCOME HOME

We asked clients about their real estate experience with Ruth... Here's a little bit of what they said:

- "Ruth far exceeded our expectations"*
- "Open to us and listened well"*
- "Helpful, available and honest"*
- "Friendly and extremely responsive"*
- "Ruth went above & beyond - 110% satisfied"*
- "We trust her marketing skills"*
- "Her professionalism on every level was exemplary"*
- "Ruth has truly redefined what I previously expected from a realtor"*



You've Found Your Realtor!

(817) 992-9232

AskRuthStory@gmail.com
www.RuthStoryOnline.com



Keller Williams Real Estate
 2813 S. Hulen Street, Suite 150
 Fort Worth, TX 76109



Ruth Story
 Broker Associate



Trusted...

Reliable...

Experienced



Bow Tying



THE BANK NEXT DOOR

Bank closer to home at Southwest Bank's Midtown Banking Center, at the corner of West Rosedale and Jerome.



Lori Baldock
 President
 Commercial Lender
 817.916.6110



MIDTOWN BANKING CENTER
 2201 MIDTOWN LANE
 FORT WORTH, TX 76104
817-916-6100
SouthwestBank.com

Member FDIC

We need hosts for next year's neighborhood meetings

If you would like to volunteer your home for one of the four neighborhood meetings in 2014, please contact Kyle Jensen at president@mistletoeheights.com.

Join the Mistletoe Heights Email List!

To subscribe to the Mistletoe Heights Residents mailing list, go to mistletoeheights.org, click on "Email list" and look for "Subscribing to Residents." Enter your name and email address, and then click "Subscribe." Note: You may need to add residents-bounces@mistletoeheights.org to your address book to receive emails. If you have questions or concerns, contact moderator@mistletoeheights.org.

Check out our website: mistletoeheights.org
 Join us on Facebook: facebook.com/mistletoeheights

Forest Park Tower Condominiums For Sale

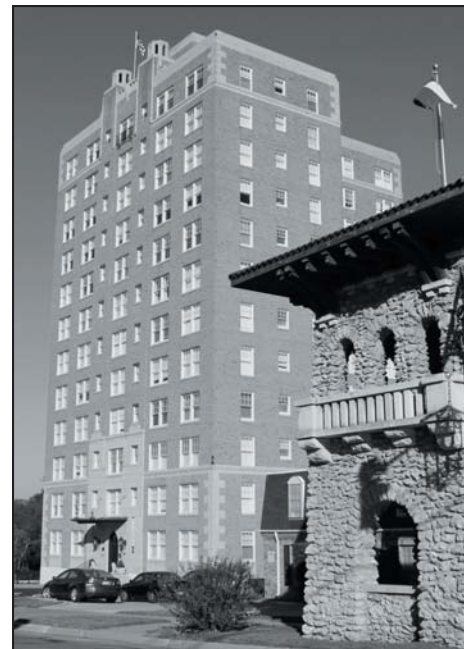
Hurry, these condos are going fast! This is a rare opportunity to own a fully renovated, affordably priced condominium in an official Fort Worth cultural landmark. Completed in 1930, this 12 story architectural jewel is only a block from the FW Zoo and surrounded by historic homes.

Renovations include new energy efficient windows, granite counter tops, stainless appliances, vintage hardwoods, large closets, separate HVAC and W/D, plus video monitored secured entries.

In 1938 when legendary TCU quarterback Davey O'Brien was galloping towards Heisman glory, Forest Park Tower was already home to many prominent Fort Worth residents.



1 BEDROOM / 1 BATHROOM FROM \$151,000
2 BEDROOM / 1 BATHROOM FROM \$191,000
3 BEDROOM / 2 BATHROOM FROM \$256,000



MODELS OPEN DAILY

MONDAY - FRIDAY 10 - 5

SAT. / SUN. BY APPOINTMENT



2306 PARK PLACE AVENUE, FORT WORTH, TX 76110 817-926-2306 WWW.FORESTPARKTOWER.COM



Advertising Submission Process

All ads must be paid for by the tenth of the previous month the ad will appear in. Artwork for all ads should also be submitted by the tenth of the month prior. Artwork should be emailed to: advertise@mistletoeheights.org. Should you have any questions, please email advertise@mistletoeheights.org.

Support Our Advertisers!

The officers of the Mistletoe Heights Association encourage you to support the businesses that advertise in our newsletter. These organizations pay to be in our newsletter and support our neighborhood. Their business also makes this publication possible; without them we would not be able to provide printed newsletters to every household in the neighborhood free of charge.

We Need Your Help!

We need a **neighborhood historian!** The association is looking for someone to research the history of our neighborhood.

We need a **secretary.** The secretary is responsible for taking minutes at both officer meetings and neighborhood meetings.

We need an **advertising representative.** The ad rep is responsible for keeping track of ads for each newsletter issue and contacting advertisers to follow up on payment, ad files, and encouraging past advertisers to consider advertising with us again.

If you'd like more information, contact Kyle Jensen at 940.367.1428 or president@mistletoeheights.org.

We need someone to take over the Yard of the Month responsibilities, which include finding a Yard of the Month for each issue, speaking with the owners about their yard, writing up a small article for the newsletter.

Next Neighborhood Meeting

February 18, 7 pm
TBA

PARK PLACE PHARMACY

Business Hours:
Monday - Friday
9:00am to 6:00pm

Closed Weekends
& Holidays

Craig Nicholson, RPh
Monique Nicholson, RPh

Your Neighborhood Pharmacy

Phone: 817-924-9292
Fax: 817-924-9264

1601 Park Place Ave, Suite B
Fort Worth, TX 76110-1303

HOME LOANS MADE EASY

At Southside Bank, we make applying for a loan easier than ever! We offer:

- Conventional, VA, and FHA loans;
- Jumbo loans;
- Interim real estate loans; and
- Land/lot loans.

Contact a local mortgage loan officer today!

Near Downtown – 701 W. Magnolia
 West Fort Worth – 9516 Clifford St.
 Arlington – 2831 West Park Row

(817) 927-7730

SOUTHSIDE BANK

Member FDIC

www.southside.com



Ask about our Affordable Home Loan Program.

In the Cultural District

Amon Carter Museum of American Art

Color! American Photography Transformed through January 5
Hotel Texas: An Art Exhibition for the President and Mrs.

John F. Kennedy through January 12

iHombre! Prints by José Guadalupe Posada through April 6

Sederick Huckaby: Hidden in Plain Site through February 2

John Albok's Neighborhood through February 23

Texas Regionalism ongoing

Kimbell Art Museum

Permanent Collection

The Age of Picasso and Matisse through February 16

Modern Art Museum of Fort Worth

México Inside Out: Themes in Art Since 1990 through January 5



Mark Van Zee Masonry
Masonry, Plaster, Tile, and Historic Restoration

Mark Van Zee
Owner

700 Emerald Sound blvd.
Oak Point, Texas
75068

940 453 8628

mark@vanzeemasonry.com

Bow Tying Party

Photos By Jim Peipert



Mediterranean flavors infused with Southern Hospitality.



CHADRA

MEZZA & GRILL

Southern Hospitality. Mediterranean Flavor.
1622 Park Place Avenue | www.chadramezza.com
Fort Worth, TX 76110 | 817.924.2372

“Oh Rats!” or OF MICE AND MEN (with apologies to John Steinbeck)

My wife and I have lived in Mistletoe Heights since 1987 (and actually longer, because we rented a house here back in the early 70s.)

We started birding when we were newlyweds. We are avid fans and admirers of birds! For years we fed birds, as many in our neighborhood do, with birdfeeders. We reluctantly stopped years ago after realizing that in feeding the birds we were also feeding rats. We tried the no-spill type feeder, but no matter what we did we would observe the rats feeding off the seed on the ground as well as climbing onto the feeder itself.

Recently I was talking to a neighbor and the subject of rats came up. He pointed out that he has been seeing more and more rats in his yard, and that he was beginning to see them not only at dusk but also during the day. I asked if he had birdfeeders out and suggested that they might be what is attracting the rats. My wife and I see the rats at dusk, coming out from under our house and garage and from our neighbors' garages and heading straight for the yards where feeders are located. Our wonderful neighborhood is home to a very large number of these pests.

I know many of us find joy in seeing birds at our feeders. I hope that you all do your own research on birdfeeders and rats and make your own conclusion. Most experts agree that feeding birds is actually unnecessary. They do not become dependent upon the seed we put out for them. They're quite capable of fending for themselves! A few resources you might consider are the Audubon Society or Birds & Blooms magazine.

My own research suggested that if we want to have birds in our yard the best thing we could do is to introduce birdbaths. The birds need water more than food. We now have four birdbaths in our back yard and we have more (desirable) birds in the yard than when we fed them. I refresh the water daily in the summer and in the winter I take a bucket of warm (or even hot) water out and fill them; the little critters need liquid water when so much previously available water is frozen. If you cannot stand the thought of not feeding our feathered friends, then consider putting out suet feeders in the winter—when birds benefit from the fatty content of suet—it helps them withstand the stress of winter temperatures. With suet feeders there is not nearly as much spillage as when regular birdseed is put out.

With our pier-and-beam houses and our ancient garages we provide excellent homes for rats, and rats can cause real problems—rodent fleas are different from canine and/or feline fleas, and are vectors for many diseases. The gnawing of rats on electrical wiring can create a fire hazard. Rats are smart and tough and there is evidence to suggest that urban rats are literally becoming immune to poisons used traditionally to combat their presence. (Google “super rats.”)



PLEASE DON'T FENCE ME IN

In case you didn't know, I'm more than just a Mistletoe Heights' area Realtor—I represent buyers and sellers all over Fort Worth, Tarrant County and beyond.



Call me with all your real estate needs & questions.

Gaje Reed



817-688-1952
gaje.reed@cbdfw.com



As a neighbor and member of this great neighborhood, I ask all residents to consider that feeding the birds actually creates more problems than it solves. Please give it some thought.

Bruce Horn
1204 Buck Avenue
817.526.4339

MISTLETOE HEIGHTS NEIGHBORHOOD MEETING MINUTES

11/19/2013 at 19:00 hrs. - Facilitator and Meeting Called By: Kyle Jenson - Note Taker and Time Keeper: Valerie Ewing
Attendees: 38 signed in - Host: Tom Cockrell at 1204 Mistletoe Drive

19:00 Welcome by Kyle Jenson

19:10 Guest Speaker – Joel Burns City Council Member for District 9

Bond Package for District 9: Important issue for Fort Worth to determine funding for our council district. Presently there are 4 council districts and money goes towards building new roads, parks and facilities like urban villages. As an example, the Berry Village was allotted \$10 million for improvements however, that money may now be split among all 4 districts. There will be a meeting in December with a final Vote May 2014 on the 2nd Saturday. In Sum, each district is different and has different needs. Website for more information: <http://fortworthtexas.gov/2014bonds>

The city of Fort Worth is looking for a new city manager. Tom Higgins announced his retirement after 27 years. Mr. Higgins agreed to stay on until a proper replacement is found. No timeline has been determined.

The TEX Rail station for Mistletoe Heights is on hold for now. The major concern is how do we connect the last mile from Mistletoe Heights to the downtown station thus benefitting commuters with proper transport?

Forest Park Road Diet: restriping is completed. Still to come is the sequencing of lights to accommodate influxes of heavy traffic. Initially, there was a “hiccup” when the Park Place Blvd light malfunctioned, this is now fixed. Regardless of ‘for or against’, the goal is safety and the vote is in favor of the traffic engineer’s suggestion; this is why it occurred. The trial is for 3 months. Thank Mayor Betsy Price for FPR diet as she made it happen after the initial delay.

- Question: concern about the initial area where 2 lanes merge: near Rosedale going south and again at Park Place Blvd going north. Answer: it’s being monitored and adjustments will be made if necessary.
- Question: 1104 Clara being demolished with possible plans to put 2 homes on the lot. Why isn’t that area protected by Historic Overlay? Answer: years ago, at the time the decision was made for historic protection, the people living in that area elected to not be included.
- Question: can we get sidewalks on Jerome for pedestrians walking to school, etc.? Answer is yes, due to a “safe pathway” program that allots funds for this.

19:30 Meeting called to order

1. Mistletoe Heights Slogan – Organized by Alex Rodman. Received 108 entries from 27 neighbors. Final vote in favor of : Mistletoe Heights: A Front Porch Community by Kathy Jo Rogers
2. Development around Mistletoe Heights – Ben Belsher. Empty lot on SE corner of Jerome and Mistletoe Blvd plan is for “Mistletoe Townhomes” Builder: Price Hulsey 817-313-3396. Latest plan is more appropriate for our neighborhood: 4 Rental Units (instead of 6), 2500 Sq Ft each with attached 2 car garages. Garages are now located off of the street and there will be a grass easement between the street and sidewalk. Unknown timeline but meeting to decide on final plans is December.
3. Updated MH Directory – Irene Stemple and Nickie Aubry. Deadline 11/20 for Advertisers. Jim Peipert photographed houses to be placed in directory.
4. Sound Wall – completion deadline is June 2014
5. Newsletter for December, will print around the first week – Stephanie Piwetz
6. Treasury Report – Jeri Jo Blackmon: Dues donations have increased which explains the 9.6% increase from last year. Only 25% of Mistletoe Heights residents donate. Reviewed income and expenses.
7. Gas XTO Contract – Aaron Shutt taking over for the late Norm Stemple: Likely no royalty checks yet as Pipeline is not up and flowing. Well sight is located north of I-30 behind the Hangmans House of Horrors business. Price of natural gas increased, plan is to drill more wells at that site. Good news: more money for royalty checks in April. The noise decibel limits are actually lower than what is legally permitted (65 db).
8. Call for Volunteers as Committee members for the neighborhood.
 - Historian: Luke Ellis (the first MH President) volunteered for this position.
 - Secretary: Valerie Ewing
 - Still needed:
 - i. Ad Rep to cover outstanding balances and keep track of payments and soliciting new ads. ~ 2 hours per month. Contact Stephanie Piwetz 817-201-1909 for details.
 - ii. Web Editor to help Scott Ewing (Webmaster) find content and put on website ~ 5 hours/ month.
9. *League of Neighborhoods – Kyle Jenson: Each year the Fort Worth League of Neighborhoods and the City of Fort Worth jointly sponsor awards recognizing outstanding neighborhoods and their projects. We need writers to submit material so MH can win an award.*
10. Bow tying party – Steve McReynolds: Sunday November 24 at 2237 Irwin @ 2pm for 1 hour.
11. MH Christmas Party: Will be held at Jeff Davis’ House December 8th at 5pm. Its potluck so bring food, drinks and dessert. Question: Noise heard by a resident who lives on the block of Rosedale between FPB and Jerome coming from the 1121 construction: a loud banging noise heard at 4am. Answer: call the city, there is a noise ordinance and city code enforced that noise from work cannot start before 7am.

Meeting Adjourned: 20:25

Mistletoe Heights Association Supporters

As of October 22, 2013

Names in bold print have contributed since the last newsletter

Magnolia		
Barrow, Wade & Brook	Hulsey, Price	Pressley, Brent & Susan
Blackmon, Jeri Jo	Jensen, Kyle	Reed, Gaye
Bowers, Todd & Lidia	Krugler, Beth	Rodman, Alex & Andy
Csanadi, Randy	Lowry, Bruce & Lisa	Stuart, Andre & Martinez, Estela
Ellis, Luke & Terri	McReynolds, Steve & Kathy	Sybesma, Richard & Wendy
Ettinger, Alan & Phyllis	Miller, Brian & Ashley	Thompkins, Geselle
Evans, Tim & Rita	Mitchell, Mark & Susie	Thompson, Doug
Factor, Abe & Kim	Muller, Mark & Lynn	Walker, Gene & Kathleen
Greenslade, Joe & Lillian	Oliver, Nora	Wilson, Gene & Gail
Grunde, Paul	Parrish, Bill & Sue	Yantis, Richard & Christi
Harris, Lynne		
Gardenia		
Asher, Garland & Betsy	Bourland, Bob & Anne	Hornsby, Michael & Donna
Barnes, Barbara	Brewer, Tom & Teri	Proctor, John
Bearden, Corey & Jennifer	Eastepp, Rosaline	Sisk, Betty
Holly		
Anonymous	Haynes, Barry & Lysta	Piwetz, Robert & Stefanie
Benson, Jack & Carol	Hotard, John & Susan	Richey, Tom & Eileen
Belsher, Ben	Hubbard, Marjorie & Moore, Kathy	Rustad, Eric & Nikki
Brady, Walter & Margaret	Jourde, Austin & Maia	Ruthart, Scott & Stevens, Liz
Daugherty, Mark & Joanna	Marcus, Rick & Tabbatha	Sedvarjian, Margaret
Dempsey, Donna	Martin, William	Shaw, Jim & Carol
Dierker, Charlie & Kathy	Maugans, Clay & Cross, Deanna	Shelton, Mark & Mary Ann
Dohoney, Tanya	McQuerns, Sam & Martha	Sippel, Jimmie Dick
Dowdle, Roy & Faye	Myers, Mike & Diane	Smith, Flavious & Melanie
Effertz, Stan & Lynda	Nader, E.J. & Sarah	Tyson, Gerry & Meralen
Grant, David & Julie	Patton, Eddie	Wild, Beth
Gunn, David & Camp, Claudia	Pereth, Hank & Linda	Willis, Gary & Susan
Hale, Tommy & Pat	Pirtle, Jane	
Mistletoe		
Beussink, Amy	Gebhardt, Steve & Sabrina	McKeever, Kent & Rebecca
Blanton, Paul & Carol	Gibbons, Jeff	Peipert, Jim & Mary Ellen
Blanton, Paul & Wendy	Gude, Richard & Judy	Press, Rick & Manion, Liz
Brennan, Mike & Neely, Denise	Halbach, Joe & Melodee	Pumphrey, Lucille
Brous, Michie & Nancy	Hecht, David & Estes, Melodie	Scales, William + Danilo Alejandro
Bruner, Woody & Debbie	Hobson, Jack & Nancy	Stemple, Irene
Callarman, Teresa	Jones, Allan & Jefflyn	Stewart, David & Lisa
Caster, Victor	Keesee, Craig & Kathy	Teague, Joy
Cetto, Allen & Cheri	Key, John & Michelle	Weinburgh, Pete & Molly
Cole, Willard & Aline	Mayes, Michael & Karen	Whitney, Garrett & Sharon
Dreyfus, Charles & Lila	Matlock, Gray & Mary	Woodson, Jim & Moore, Barbara
Fershtand, John & Chris	McDonnell, Mac & Joni	

Thank you for your donations to our neighborhood association!

2013 Levels of Giving

Magnolia - \$76 and up
Gardenia - \$51 to \$75

Holly - \$26 to \$50
Mistletoe - Up to \$25



FREE CLASSIFIED ADS

HOME WANTED

We'd like to buy a home (3+bed/2+ bath) around Lily B. Clayton or Tanglewood area for Spring/Summer 2014. Please call Lidia or Todd Bowers at 469.879.5172.

ESTATE SALE SERVICES

Estate Sales & Appraisals Experienced, reliable estate sales in and out of Mistletoe Heights since 1992. Certified Appraiser, International Society of Appraisers. Appraisals for insurance, estate evaluations, donations; whatever your needs. Contact: Terri Ellis, Mistletoe Estate Sales, 817-926-9424 or email tqUILTS@mac.com

PIANO LESSONS

For beginners and intermediates. Mary Smith, 2300 W. Magnolia Ave. 817-927-8876.

COMPLETE PROPERTY RENOVATION: Demolition, cleanup, specializing in historic home renovations, painting, wallpaper. Contact Jeff Cuningham at 817-988-7113.

HANDYMAN IN YOUR NEIGHBORHOOD No job is too small. I live on Edwin and have local references. Have over 30 Years experience in remodel. Call Terry 817.454.1795 free estimates!!

ADULTS ENJOYING THE PIANO TOGETHER

- We focus on music & joy! Newbies ~ piano wannabes ~ relearners. Keyboard skills, music reading made easy, drumming, and moving to the music. 8-week workshops on weekday mornings at Arts Fifth Avenue in Fairmount. FREE preview classes. For more info visit our website at www.AdultMusik.com or contact Carol Spencer at 817.927.3240 or carolingfw@sbcglobal.net.

TUTOR, K-3rd grade. Caring, encouraging, experienced (12 years) certified elementary school teacher is offering tutoring this summer. Contact Kathy Jo Rogers at 817.688.0905 or kathyjorogers@sbcglobal.net.

MISTLETOE HEIGHTS PET SITTERS is now booking for your vacation, or any other time. References available on request. Mistletoeheightspetsitters.com or 817-247-2870

26 YEARS EXPERIENCE IN TEACHING. Tutoring Pre-K-2nd Grade. Is your child falling behind? Need some one-on-one attention? Don't want your child to lose what they've learned over the summer? I can help! Call Joy Ridler at 817.637.5541.

LEARN TO SWIM LESSONS -With emphasis on Olympic strokes. Contact Richard Sybesma, Head Swim Coach, TCU Box 297600, Fort Worth, TX 76129; 817-257-5646 or 817-257-7963

HARPIST: Sally Sledge ministers on the harp as a worshiper, psalmist and vocalist. She has recorded two CDs: "Return to Your Rest" and "Cherished Times". She is available to play for home groups, church events, Bible studies, weddings, funerals, dinner parties or any special occasion. For more information and song samples, you may access her web site at www.sallysledge.com.

TAX PREPARATION

Jeri Jo Blackmon, former IRS Agent and current Enrolled Agent licensed by the IRS will prepare and e-file your individual or business tax returns. Also, as a QuickBooks Pro Advisor, training is available for individuals or businesses who want to improve their skills or learn new skills using QuickBooks accounting software. Contact Jeri Jo Blackmon at 817-923-4393 or email JeriJo@Charter.net. 1408 Mistletoe Drive.

HOME WANTED We'd like to buy a home - from an owner - no agents, please! 817-732-3836.



GREAT CAR BUYING EXPERIENCE

BOB BOURLAND MISTLETOE HEIGHTS NEIGHBOR

- Frank Kent Honda Sales Associate for over 9 years
- Gold Master for the last five years, the top award given by Honda
- TCU graduate
- Retired from Tandy Corporation/Radio Shack
- Married for 48 years

rd.bourland@yahoo.com
cell 817.266.7693 | work 817.696.4144



FRANK KENT
HONDA

3400 West Loop 820 South
Fort Worth, TX 76116
FrankKentHonda.com

Helpful Phone Numbers, Emails, Addresses and Websites

City information

City Code violations	817.392.1234
City of Fort Worth	817.392.2255
fortworthtexas.gov	
Police—nonemergency	817.335.4222
Garage sale permits	817.392.7851
Graffiti abatement	817.212.2700
Lily B. Clayton Elementary	817.922.6660
schools.fwisd.org/clayton	
Paschal High School	817.814.-000
paschalhs.org	
Historical Preservation	
Liz Casso	817.392.8037
liz.casso@fortworthtexas.gov	
Southside Preservation Hall	817.926.2800
Hallyes@earthlink.net	
southsidepreservation.com	
The T/Longhorn Trolley	817.215.8600
the-t.com	
Trinity Railway Express	817.215.8600
trinityrailwayexpress.org	
City Council District 9	
Joel Burns	817.392.8809
district9@fortworthtexas.gov	

MHA officers

officers@mistletoeheights.org	
President	
Kyle Jensen	940.367.1428
president@mistletoeheights.org	
Vice President	
Ben Belsher	817.919.8375
vicepresident@mistletoeheights.org	
Secretary	
TBA	
secretary@mistletoeheights.org	
Treasurer	
Jeri Jo Blackmon	817.923.4393
treasurer@mistletoeheights.org	
Newsletter Editor	
Stefanie Ball Piwetz	817.201.1909
newsletter@mistletoeheights.org	

Volunteers

Historic Preservation Committee	
Roger Ross	817.372.6865
Street Rep Captains	
Melissa Kohout (East side)	817.313.1419
Rosaline Eastep Takes (West side)	817.207.9750
Welcome Baskets	
Beth Krugler	817.713.0993
Alexandra "Alex" Rodman	773.726.1488
Advertising Manager	
advertise@mistletoeheights.org	
Newby Park	
Marjorie Day	817.914.8057
Email Moderator	
Richard Yantis	817.924.2857
Webmaster	
Scott Ewing	214.403.7762

Street reps (listed by blocks)

East of Forest Park	
2200 W. Rosedale South	
Dottie Guffey	817.921.6288
2200 Irwin	
Gary Willis	817.924.4000
2100/2200 Mistletoe Blvd.	
Melissa Kahout	817.313.1419
2100/2200 West Magnolia	
Mecca Givens	817.927.2244
2200 Harrison	
Aaron Torkelson	817.907.5533
2100 Harrison Ave.	
Vacancy	
2100 Mistletoe Ave.	
Pat Hale	817.924.5263
2200 Mistletoe Ave.	
Richard & Christi Yantis	817.924.2857
2100/2200 Edwin	
Katrina Pittman	817.921.2221
2100 Weatherbee	
Judy Gude	817.926.8843
2200 Weatherbee	
Susan Harwell	817.923.8806
2100 Morphy	
Vacancy	
Forest Park Blvd.	
Steve McReynolds	817.926.7955
West of Forest Park	
2300 W. Rosedale South	
Kimberly Helixon	817.927.4641
2300 Irwin	
Sue Duvall	817.926.8714
2300/2400 Mistletoe Blvd.	
Lisa Stewart	817.924.9666
2300 West Magnolia	
Susan Pressley	817.923.6061
2300/2400 Harrison	
Robert DeVargas	817.923.9393
2300 Mistletoe Ave.	
Jason Fuller family	
2300 Edwin	
Grant Pannell	817.924.0051
1100 Clara	
Marc & Kathy Jo Rogers	817.923.3304
1200 Clara	
Betty Arvin	817.924-7088
1100 Buck	
Kate Herring	817.923.3843
1200/1300 Buck	
Trisha Dianne Stemple	817.926.6546
Mistletoe Drive	
Meralen & Gerry Tyson	817.926.5909
2300 Mistletoe Drive	
Chris Fershtand	817.923.8422
Carol Benson	817.921.4000

Neighborhood police officers

Sidney Keith (West)	817.944.1038
David Cloninger (East)	817.992.0181

MHA yearly memberships

Voluntary dues are \$15, \$25, \$50 or whatever you can afford. Your dues help pay for this newsletter, the Mistletoe Heights phone directory and many neighborhood functions. Please make your check payable to Mistletoe Heights Association. Mail to: Jeri Jo Blackmon, 1408 Mistletoe Drive.

Free classified ads

As a MH resident, you get one free classified ad. Please submit copy by the 15th of the month. Notify the editor at 817.201.1909 or email: newsletter@mistletoeheights.org.

Editorial policy

Articles and letters to the editor are welcomed. To be published as written, letters must be addressed to the editor, signed, and include a phone number.

Anonymous letters will not be published. Articles may be submitted for publication, signed or unsigned, subject to approval and editing.

Contact information helps, especially if we have questions for you.

Letters to the editor are limited to a half-page (approximately 350 words). Please send email to: newsletter@mistletoeheights.org.

Advertising information

To place an advertisement or for actual mechanical sizes, please email:

advertise@mistletoeheights.org

Rates:

Business-card size \$25

1/4 page \$50

Half page \$100

Full Page \$200

Pre-printed inserts \$100

8 1/2 x 11

Deadline for ads, payment and artwork is the tenth of the month.