



Mistletoe Express



www.mistletoeheights.org
September 2013

Photo by Jim Peibert

President's Corner

Kyle Jensen

When we first moved into the neighborhood, we wanted to get to know our neighbors. Locating a time to introduce ourselves was up to chance because we were busy getting settled in and making that connection was important but not necessarily a priority. Knowing your neighbors, however, provides a safer, more connected community, one where people looking out for each other. You might just make some really strong, longlasting friendships.

Use the Front Porch or Yard

We're all very busy and getting to know people in your neighborhood does in fact take time. What I like to do is to turn the everyday activities into ones that may lead to introductions.

There was a time when facebook, video games, and the internet were not available. Talking, helping, and supporting one's local community were sources of entertainment.



If you ask an older member of the community what their favorite memory is, they likely will say something similar to spending time with a gathering of friends, family, and neighbors. Instead of hanging out in the backyard, why not spend more time in the front yard? Whether it's reading a book or magazine, enjoying a glass of wine, or trimming the hedge; being outdoors naturally leads to conversations with those passing by, coming home from work, or leaving for the evening. We live in a unique neighborhood that was designed for interaction with those around. Large porches in front for tolerable summer nights where you can sit and watch the neighborhood children (and your own) play. I think we need to take back our front porches and start rebuilding these social bonds that are so very important.

If you don't have a front porch, spend time in your yard or a common area such as Newby Park or the Triangle.

Continued on page 5

Next Neighborhood Meeting

November 19, 7 pm
Home of Cockerell Family
1204 Mistletoe Drive

Inside This Issue:

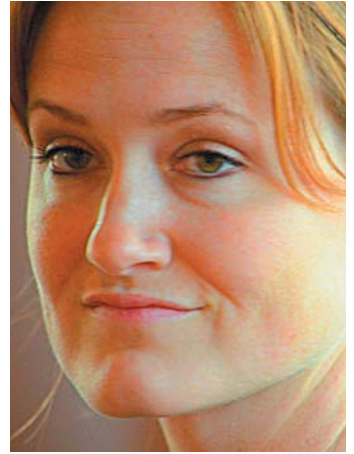
Page 2 - In The Neighborhood Pics
Page 3 - Yard of Month
Page 4 - Opportunity at Paschal High School

Page 5 - Friday on the Green, Pop up Market
Page 6 - Fun Runs

Page 7 - In the Cultural District,
Page 8 - Visit Mistletoe Heights Website

Page 9-10 - MHA Annual Dues Drive, MHA Supporters
Page 11-12 - Classifieds, Helpful Numbers

What's Up in the Neighborhood



The Yard of the Month

2212 Mistletoe Blvd.



The September of the Yard of the Month goes to newlyweds David and Claudia Gunn at 2212 Mistletoe Blvd. David grew up in New Zealand and spent his teenage and college years in Australia before moving to England for graduate school. His career brought him to the United States (Atlanta, GA) where he eventually made his way to Fort Worth. Claudia comes from Philadelphia and has been in Fort Worth for thirty-three years. She moved to Mistletoe Heights in 1992. The couple married early this year.

The colorful orange cosmos flowers in their yard sealed the deal for the yard of the month. Other plants in the yard include lamb's ear, Jerusalem sages, and beautiful purple and white periwinkles. Like many others their biggest challenges are dealing with the heat and water restrictions.

When you are in the neighborhood be sure to tell these young newlyweds how much you enjoy their yard. If you have a neighbor you would like to nominate for yard of the month, email me at williamtritter@yahoo.com.

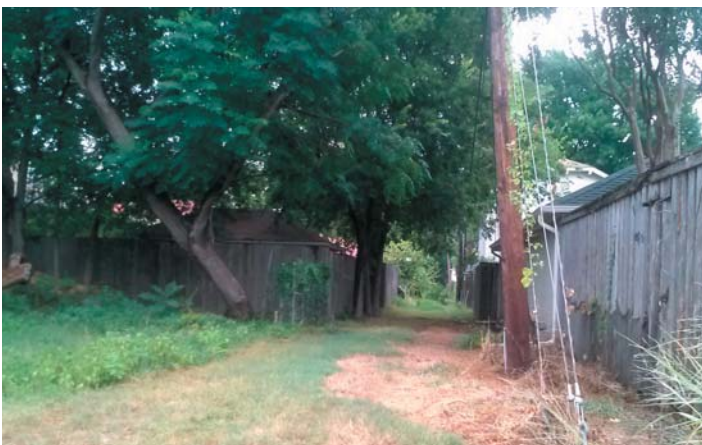
—William Ritter

Alley Cleanup Day

There will be an Alley Cleanup Day October 19, from 8 am to noon. We need volunteers to provide labor, tools, and drinks and lunch. If there is an area in our neighborhood that you feel needs some special attention, please nominate that location and send photos and/or a list of what needs to be accomplished.

So far, we have two nominations: the alley south of Magnolia and a muddy sidewalk that is unpleasant for walkers.

There will be more information in the September and October newsletters. Please email Rosaline Eastepp Takes (secretary@mistletoeheights.org) or 817-207-9750 with nominations or to put your name on the volunteer list. If you know of a scout group that would like to volunteer, their help would be appreciated.



We Need Your Help!

The neighborhood association is in need of volunteers!

We need one more **Historic Preservation Committee** volunteer! The committee chair is Roger Ross. Roger has graciously volunteered to head up this group. He needs one more volunteer to sit on the committee. Please contact him or Kyle if you are interested. Roger Ross: 817.372.6865, rogerlesley@me.com.

We need a **neighborhood historian!** The association is looking for someone to research the history of our neighborhood.

We need a **secretary.** The secretary is responsible for taking minutes at both officer meetings and neighborhood meetings.

We need an **advertising representative.** The ad rep is responsible for keeping track of ads for each newsletter issue and contacting advertisers to follow up on payment, ad files, and encouraging past advertisers to consider advertise with us again.

If you'd like more information, contact Kyle Jensen at 940.367.1428 or president@mistletoheights.org.

Great Volunteer Opportunity at Paschal High School

If you are a retired teacher and/or you enjoy working with teenagers, the Paschal High School Educational Foundation (www.phseducationalfoundation.org) has a great opportunity for you to make a difference in the lives of young people. We work with first-generation, college-bound students in the Paschal AVID program one to three hours per week during the school year. Working with these incredible young people to help them become successful in fulfilling their educational dreams is one of the most rewarding things you will ever do. For more information contact Joe Greenslade at phsedf@gmail.com



**GREAT
CAR BUYING
EXPERIENCE**

BOB BOURLAND
MISTLETOE HEIGHTS NEIGHBOR

- Frank Kent Honda Sales Associate for over 9 years
- Gold Master for the last five years, the top award given by Honda
- TCU graduate
- Retired from Tandy Corporation/Radio Shack
- Married for 48 years

rd.bourland@yahoo.com
cell 817.266.7693 | work 817.696.4144



FRANK KENT
HONDA

3400 West Loop 820 South
Fort Worth, TX 76116
FrankKentHonda.com


www.edwardjones.com

**Add an Important Item to
Your Back-to-school List.**

For parents, back-to-school season means it's time to stock up on school supplies. But it can also be a good time to think about how to save for your child's future education.

Developing a strategy for achieving your education savings goal – or other savings goals – can help you stay on track.

To learn more about your education savings options, call or visit today.



Bruce C Border, CFP®
Financial Advisor

2453 Forest Park Boulevard
Ft Worth, TX 76110
817-926-8056

Edward Jones
MAKING SENSE OF INVESTING

Member SIPC



Friday on the Green

Friday on the Green is a monthly concert series presented April through October by Fort Worth South, Inc. in partnership with the Fort Worth Weekly. The event is held at Magnolia Green, located on Lipscomb between Magnolia and Rosedale.

September 6, 7–10 pm
October 11, 7–10 pm



Support Our Advertisers!

The officers of the Mistletoe Heights Association encourage you to support the businesses that advertise in our newsletter. These organizations pay to be in our newsletter and support our neighborhood. Their business also makes this publication possible; without them we would not be able to provide printed newsletters to every household in the neighborhood free of charge.

Pop-up Market

Pop-up Market is an outdoor shopping destination in the Near Southside. Shop handmade jewelry, art, collectibles and more. Dozens of artists, collectors, and crafters will setup once a month at Magnolia Green. Pop-up Market is held on Saturdays following Fort Worth South, Inc.'s Friday on the Green. Events benefit Ronald McDonald House.

Saturdays, September 7, and October 12,
10 am–6 pm

President's Corner - Continued From Page 1

Shake One Hand a Week

When we moved into the neighborhood last year, we were determined to get to know the very diverse area to which we had moved. So we set ourselves the task of shaking at least one new hand per week. We made it a priority to get more involved with the association; take on a task that we felt would benefit our area. This gave us an opportunity to introduce ourselves to new people and have a conversation. Take part in a committee (see page4), become the new historian (see page4), be part of our alley clean up day (see page3); this is a chance for you to be involved in making a difference. These are all wonderful ways to let the neighborhood know who you are.

It was becoming involved with the association that introduced me to a great neighbor who has ridden his bike across America. If I had simply waited for people to come to me, I never would've met this intelligent, energetic man. Now we spend time listening to music, making sure we keep riding, helping each other out when we need it—he is part of what makes this neighborhood great!

I highly recommend taking just 15 minutes a week to shake one new hand.

What to Do If You Don't Have the Time or Energy

For many of us, time is so valuable that just thinking about doing any of the above suggestions is overwhelming. Getting to know someone doesn't need to be in the form of a formal get together or introduction, small gestures often go a long way to becoming more connected. We once wrote a note attached to a Ziploc bag filled with cookies and left it on a neighbor's porch. We mentioned that we live behind them and that we were there if they needed anything. It was simple and brief and in return, I found a really great friend.

You don't need to do much. Just a wave and a smile can make a big impact.

I would like to meet you. Stay Connected:

- Our Chat Room www.facebook.com/groups/mhneighbors
- On the back of your newsletter (drop us an email)
- Our webpage www.mistletoeheights.org/contact
- Our next members meeting (Nov 19 @ 7:00 pm)

Join us as we make an effort to clean up our neighborhood and improve the quality of life for all those that live here.

— Kyle Jensen, MHA President

Join the Mistletoe Heights Email List!

To subscribe to the Mistletoe Heights Residents mailing list, go to mistletoeheights.org, click on "Email list" and look for "Subscribing to Residents." Enter your name and email address, and then click "Subscribe." Note: You may need to add residents-bounces@mistletoeheights.org to your address book to receive emails. If you have questions or concerns, contact moderator@mistletoeheights.org.

Check out our website: mistletoeheights.org
Join us on Facebook: facebook.com/mistletoeheights

Jeri Jo Blackmon
Professional Tax Services

817-923-4393

Email: JeriJo@charter.net
Enrolled Agent licensed by the IRS

1408 Mistletoe Drive
Fort Worth, TX 76110

Cell: 817-925-7833
Fax: 817-924-7733

**PARK PLACE
PHARMACY**



Craig Nicholson, RPh
Monique Nicholson, RPh

Your Neighborhood Pharmacy

Phone: 817-924-9292
Fax: 817-924-9264

1601 Park Place Ave, Suite B
Fort Worth, TX 76110-1303

Fun Runs in the Area

FWRC Labor Day 15K/5K
Monday, September 9, 7 am
fwrrunners.org

Destination 5K at Trinity Park
Saturday, September 21, 10 am
ddeboosters.webs.com

Run in the Dark
5K at Alliance Airport
Saturday, September 21, 7 pm
runontexas.com

Puzzle Scuttle 5K at TCU
Saturday, October 19, 8 am
runontexas.com

Vampire Run
Saturday, October 19, 8 pm
runontexas.com

What would you like to see in the newsletter?

We want your feedback! What topics would you like to see in the newsletter? Send us your suggestions: newsletter@mistletoeheights.org.

urbanYOGA
YOGA

NIA

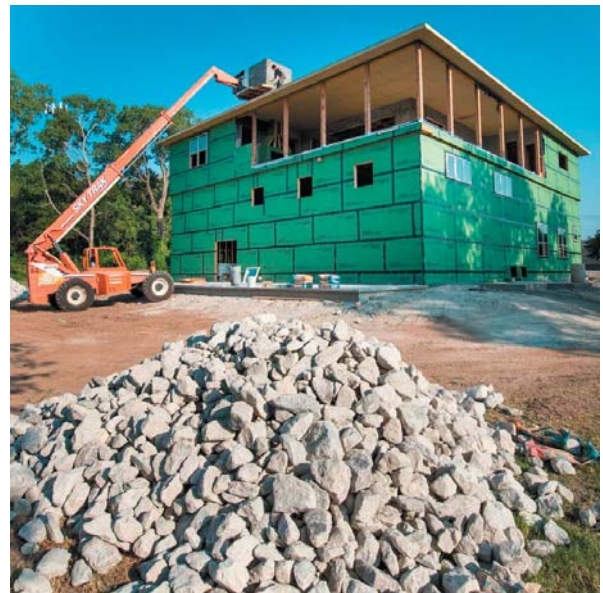
BARRE

urbanYOGAfw.com

1706 8th avenue, fort worth
817•908•flow

urbanYOGA

AT HOUSE TAILORS
RESIDENTIAL GENERAL CONTRACTORS



The new Flowers on the Square building.
4701 White Settlement Road 76114.
Framed and ready for the stucco & rock exterior.

Steve's cell: 682-553-3161 Office 817-423-1935

Housetailors@yahoo.com
Housetailors.com

HOME LOANS MADE EASY

At Southside Bank, we make applying for a loan easier than ever! We offer:

- Conventional, VA, and FHA loans;
- Jumbo loans;
- Interim real estate loans; and
- Land/lot loans.

Contact a local mortgage loan officer today!

Near Downtown – 701 W. Magnolia
 West Fort Worth – 9516 Clifford St.
 Arlington – 2831 West Park Row

(817) 927-7730

SOUTHSIDE BANK

www.southside.com

Member FDIC



Ask about our Affordable Home Loan Program.

In the Cultural District

Amon Carter Museum of American Art
Sederick Huckaby: Hidden in Plain Site through February 2
We the People: Picturing American Identity through September 8
Ed Ruscha: Made in California through September 15
John Albok's Neighborhood opens September 21
Texas Regionalism ongoing

Kimbell Art Museum

Permanent Collection

Wari: Lords of the Ancient Andes through September 8

Modern Art Museum of Fort Worth

México Inside Out: Themes in Art Since 1990 opens September 15



BRIT® presents:

Kochi Makino: An Amazing Botanical Garden in Japan

September 7 - November 30

The exhibit documents the growth of one of Japan's premier botanical gardens. The exhibit will include plant specimens, plant photos, rare books, and other memorabilia from the garden.



817.332.4441 | Follow us @BRIT_org | Facebook.com/BRITorg
1700 University Drive | Fort Worth, TX 76107-3400

PLEASE DON'T FENCE ME IN

In case you didn't know, I'm more than just a Mistletoe Heights' area Realtor— I represent buyers and sellers all over Fort Worth, Tarrant County and beyond.



Call me with all your real estate needs & questions.

Gaye Reed



817-688-1952
gaye.reed@cbfw.com



THE BANK NEXT DOOR

Bank closer to home at Southwest Bank's Midtown Banking Center, at the corner of West Rosedale and Jerome.



Lori Baldock
President
Commercial Lender
817.916.6110



MIDTOWN BANKING CENTER
2201 MIDTOWN LANE
FORT WORTH, TX 76104
817-916-6100
SouthwestBank.com

Member FDIC

Visit the MHA Website!

When was the last time you visited the neighborhood website (www.mistletoeheights.org)? Our neighborhood volunteers have been working to update information on the site. The "Our History" link has been updated to include additional information researched by Wyatt Teague and originally published in the Mistletoe Express Newsletter. The "Map Mistletoe Heights" link has been updated to include various map views of Mistletoe Heights from the early 1900s. What was the name of your street 100 years ago? Finally, a new link called "Gallery" has been added. This is a collection of photographs from the neighborhood that you might enjoy seeing. Our neighbor Jim Peipert (and others) have provided us with photos of virtually every house in the neighborhood. We are also working to obtain historical photographs to add to the collection. Do you have any old photos that your neighbors might find interesting? You can register and add the photos yourself or contact me and I will be glad to add them for you. If you only have original prints, we can scan them and save them to the site—not a problem!

Are you interested in helping with website content? Did you find an error that needs to be corrected? Let me hear from you.

Sincerely, Scott Ewing, webmaster@mistletoeheights.org or see@prodigy.net



Ruth Story Market Activity

Just Listed Under Contract Just Sold

3821 W. 5th Street	3324 W. 4th Street	1715 Western
2415 Ryan Place	2625 Highview	2845 Willing
2836 Ryan Place	Terrace	4050 Glenavon
		4004 Clayton Road W.

(817)992-9232

AskRuthStory@gmail.com

Visit our website often for market updates and other helpful information!

www.RuthStoryOnline.com



Ruth Story
Keller Williams
RuthStoryOnline.com
Trusted... Reliable... Experienced
817.992.9232 AskRuthStory@gmail.com

Mediterranean flavors infused with Southern Hospitality.



CHADRA
MEZZA & GRILL

Southern Hospitality. Mediterranean Flavor.
1622 Park Place Avenue | www.chadramezza.com
Fort Worth, TX 76110 | 817.924.2372

Mistletoe Heights Association Annual Dues Drive

All residents of Mistletoe Heights are members of the association and dues donations are completely voluntary. Any amount is welcomed and appreciated. In addition to the seasonal social gatherings, landscape maintenance, newsletter and directory publications, dues donations fund a number of special projects.

Our annual dues drive begins in April and continues through October. You will see this flyer in our newsletter each of those months as we collect dues donations for our neighborhood association. New this year -- we will recognize donors in EVERY newsletter through October with the final recognition published in our December issue.



Levels of giving for this year are:

Mistletoe – up to \$25

Holly - \$26 to \$50

Gardenia - \$51 to \$75

Magnolia - \$76 and up



Thank you for supporting your neighborhood association.
Together we can make Mistletoe Heights an even better place to live.

\$25

\$50

\$75

\$ Other

Please return your dues donation to:

Name: _____

Address: _____

Mistletoe Heights Association
c/o Jeri Jo Blackmon
1408 Mistletoe Drive
Fort Worth, TX 76110

Please check here if you wish your donation to remain anonymous

Check here if you can volunteer some time to our association and include a telephone number to reach you _____

Mistletoe Heights Association Supporters

As of August 24, 2013

Names in bold print have contributed since the last newsletter

Magnolia		
Blackmon, Jeri Jo	Jensen, Kyle	Parrish, Bill & Sue
Csanadi, Randy	Krugler, Beth	Pressley, Brent & Susan
Ellis, Luke & Terri	Lowry, Bruce & Lisa	Reed, Gaye
Ettinger, Alan & Phyllis	McReynolds, Steve & Kathy	Sybesma, Richard & Wendy
Evans, Tim & Rita	Miller, Brian & Ashley	Thompkins, Geselle
Grunde, Paul	Mitchell, Mark & Susie	Thompson, Doug
Harris, Lynne	Muller, Mark & Lynn	Wilson, Gene & Gail
Hulsey, Price	Oliver, Nora	
Gardenia		
Asher, Garland & Betsy	Bourland, Bob & Anne	Hornsby, Michael & Donna
Barnes, Barbara	Brewer, Tom & Teri	Proctor, John
Bearden, Corey & Jennifer	Eastepp, Rosaline	
Holly		
Anonymous	Hale, Tommy & Pat	Pirtle, Jane
Benson, Jack & Carol	Haynes, Barry & Lysta	Piwetz, Robert & Stefanie
Belsher, Ben	Hotard, John & Susan	Rustad, Eric & Nikki
Brady, Walter & Margaret	Hubbard, Marjorie & Moore, Kathy	Ruthart, Scott & Stevens, Liz
Camp, Claudia & Gunn, David	Jourde, Austin & Maia	Sedvarjian, Margaret
Daugherty, Mark & Joanna	Marcus, Rick & Tabbatha	Shaw, Jim & Carol
Dierker, Charlie & Kathy	Martin, William	Shelton, Mark & Mary Ann
Dohoney, Tanya	McQuerns, Sam & Martha	Sippel, Jimmie Dick
Dowdle, Roy & Faye	Myers, Mike & Diane	Smith, Flavious & Melanie
Effertz, Stan & Lynda	Nader, E.J. & Sarah	Tyson, Gerry & Meralen
Grant, David & Julie	Patton, Eddie	Willis, Gary & Susan
Mistletoe		
Anonymous	Dreyfus, Charles & Lila	McKeever, Kent & Rebecca
Blanton, Paul & Carol	Fershtand, John & Chris	Peipert, Jim & Mary Ellen
Blanton, Paul & Wendy	Gebhardt, Steve & Sabrina	Pereth, Hank & Linda
Brennan, Mike & Neely, Denise	Halbach, Joe & Melodee	Press, Rick & Manion, Liz
Brous, Michie & Nancy	Hobson, Jack & Nancy	Pumphrey, Lucille
Bruner, Woody & Debbie	Jones, Allan & Jefflyn	Scales, William + Danilo Alejandro
Callarman, Teresa	Keesee, Craig & Kathy	Sisk, Betty
Caster, Victor	Mayes, Michael & Karen	Stemple, Irene
Cetto, Allen & Cheri	Matlock, Gray & Mary	Weinburgh, Pete & Molly
Cole, Willard & Aline	McDonnell, Mac & Joni	Woodson, Jim & Moore, Barbara

Thank you, neighbors for your donations to our neighborhood association!
There is still time to get your dues in to be included in next month's donation list. We put your funds to use through neighborhood activities, newsletters and other activities. Please join us!
See the flyer in this month's newsletter for information on how to donate.

2013 Levels of Giving

Magnolia - \$76 and up	Holly - \$26 to \$50
Gardenia - \$51 to \$75	Mistletoe - Up to \$25



FREE CLASSIFIED ADS

RESUME, COVER LETTER AND APPLICATION ESSAY WRITING

Need a resume, or just need to update what you have? Call or email Mistletoe neighbor Alexandra "Alex" Rodman who specializes in resume design; cover Letter and application essay writing; and interview preparation. For a minimal cost, you'll look like a million bucks on paper! Contact Alex at 773-726-1488 or alrodman@yahoo.com

ESTATE SALE SERVICES
- Estate Sales & Appraisals Experienced, reliable estate sales in and out of Mistletoe Heights since 1992. Certified Appraiser, International Society of Appraisers. Appraisals for insurance, estate evaluations, donations; whatever your needs. Contact: Terri Ellis, Mistletoe Estate Sales, 817-926-9424 or email tqilts@mac.com

PIANO LESSONS
For beginners and intermediates. Mary Smith, 2300 W. Magnolia Ave. 817-927-8876.

ADULTS ENJOYING THE PIANO TOGETHER
We focus on fun! Small group classes for newbies & re-learners in Mistletoe Heights ~ keyboard skills ~ music literacy ~ drumming ~ reading music made easy ~ proven curriculum ~ degreed teacher ~ 8-week sessions ~ Call about \$0 preview class. Contact Carol E. Spencer at carolingfw@sbcglobal.net or 817.927.3240.

HARPIST: Sally Sledge ministers on the harp as a worshiper, psalmist and vocalist. She has recorded two CDs: "Return to Your Rest" and "Cherished Times". She is available to play for home groups, church events, Bible studies, weddings, funerals, dinner parties or any special occasion. For more information and song samples, you may access her web site at www.sallysledge.com.

HOME WANTED We'd like to buy a home - from an owner - no agents, please! 817-732-3836.

TAX PREPARATION
Jeri Jo Blackmon, former IRS Agent and current Enrolled Agent licensed by the IRS will prepare and e-file your individual or business tax returns. Also, as a QuickBooks Pro Advisor, training is available for individuals or businesses who want to improve their skills or learn new skills using QuickBooks accounting software.

Contact Jeri Jo Blackmon at 817-923-4393 or email JeriJo@Charter.net. 1408 Mistletoe Drive.

MISTLETOE HEIGHTS PET SITTERS is now booking for your vacation, or any other time. References available on request.

Mistletoeheightspetsitters.com or 817-247-2870

TUTOR, K-3rd grade. Caring, encouraging, experienced (12 years) certified elementary school teacher is offering tutoring this summer. Contact Kathy Jo Rogers at 817.688.0905 or kathyjorogers@sbcglobal.net.

HANDYMAN IN YOUR NEIGHBORHOOD No job is too small. I live on Edwin and have local references. Have over 30 Years experience in remodel. Call Terry 817.454.1795 free estimates!!

COMPLETE PROPERTY RENOVATION: Demolition, cleanup, specializing in historic home renovations, painting, wallpaper. Contact Jeff Cuningham at 817-988-7113.

LEARN TO SWIM LESSONS -With emphasis on Olympic strokes. Contact Richard Sybesma, Head Swim Coach, TCU Box 297600, Fort Worth, TX 76129; 817-257-5646 or 817-257-7963

26 YEARS EXPERIENCE IN TEACHING. Tutoring Pre-K-2nd Grade. Is your child falling behind? Need some one-on-one attention? Don't want your child to lose what they've learned over the summer? I can help! Call Joy Ridler at 817.637.5541.



Residential Roofing Specialists
No-Charge Estimates ♦ Reroof ♦ Repairs ♦ Inspections
817-738-1756

Helpful Phone Numbers, Emails, Addresses and Websites

City information

City Code violations	817.392.1234
City of Fort Worth	817.392.2255
fortworthtexas.gov	
Police—nonemergency	817.335.4222
Garage sale permits	817.392.7851
Graffiti abatement	817.212.2700
Lily B. Clayton Elementary	817.922.6660
schools.fwisd.org/clayton	
Paschal High School	817.814.-000
paschalhs.org	
Historical Preservation	
Liz Casso	817.392.8037
liz.casso@fortworthtexas.gov	
Southside Preservation Hall	817.926.2800
Hallyes@earthlink.net	
southsidepreservation.com	
The T/Longhorn Trolley	817.215.8600
the-t.com	
Trinity Railway Express	817.215.8600
trinityrailwayexpress.org	
City Council District 9	
Joel Burns	817.392.8809
district9@fortworthtexas.gov	

MHA officers

officers@mistletoeheights.org	
President	
Kyle Jensen	940.367.1428
president@mistletoeheights.org	
Vice President	
Ben Belsher	817.919.8375
vicepresident@mistletoeheights.org	
Secretary	
TBA	
secretary@mistletoeheights.org	
Treasurer	
Jeri Jo Blackmon	817.923.4393
treasurer@mistletoeheights.org	
Newsletter Editor	
Stefanie Ball Piwetz	817.201.1909
newsletter@mistletoeheights.org	

Volunteers

Historic Preservation Committee	
Roger Ross	817.372.6865
Street Rep Captains	
Melissa Kohout (East side)	817.313.1419
Gaye Reed (West side)	817.921.0009
Welcome Baskets	
Beth Krugler	817.713.0993
Alexandra "Alex" Rodman	773.726.1488
Advertising Manager	
advertise@mistletoeheights.org	
Newby Park	
Marjorie Day	817.914.8057
Email Moderator	
Richard Yantis	817.924.2857
Webmaster	
Scott Ewing	214.403.7762

Street reps (listed by blocks)

East of Forest Park	
2200 W. Rosedale South	
Dottie Guffey	817.921.6288
2200 Irwin	
Gary Willis	817.924.4000
2100/2200 Mistletoe Blvd.	
Melissa Kahout	817.313.1419
2100/2200 West Magnolia	
Mecca Givens	817.927.2244
2200 Harrison	
Aaron Torkelson	817.907.5533
2100 Harrison Ave.	
Vacancy	
2100 Mistletoe Ave.	
Pat Hale	817.924.5263
2200 Mistletoe Ave.	
Richard & Christi Yantis	817.924.2857
2100/2200 Edwin	
Katrina Pittman	817.921.2221
2100 Weatherbee	
Judy Gude	817.926.8843
2200 Weatherbee	
Susan Harwell	817.923.8806
2100 Morphy	
Vacancy	
Forest Park Blvd.	
Steve McReynolds	817.926.7955
West of Forest Park	
2300 W. Rosedale South	
Kimberly Helixon	817.927.4641
2300 Irwin	
Sue Duvall	817.926.8714
2300/2400 Mistletoe Blvd.	
Lisa Stewart	817.924.9666
2300 West Magnolia	
Susan Pressley	817.923.6061
2300/2400 Harrison	
Robert DeVargas	817.923.9393
2300 Mistletoe Ave.	
Jason Fuller family	
2300 Edwin	
Grant Pannell	817.924.0051
1100 Clara	
Marc & Kathy Jo Rogers	817.923.3304
1200 Clara	
Betty Arvin	817.924-7088
1100 Buck	
Kate Herring	817.923.3843
1200/1300 Buck	
Trisha Dianne Stemple	817.926.6546
Mistletoe Drive	
Meralen & Gerry Tyson	817.926.5909
2300 Mistletoe Drive	
Chris Fershtand	817.923.8422
Carol Benson	817.921.4000

Neighborhood police officers

Sidney Keith (West)	817.944.1038
David Cloninger (East)	817.992.0181

MHA yearly memberships

Voluntary dues are \$15, \$25, \$50 or whatever you can afford. Your dues help pay for this newsletter, the Mistletoe Heights phone directory and many neighborhood functions. Please make your check payable to Mistletoe Heights Association. Mail to: Jeri Jo Blackmon, 1408 Mistletoe Drive.

Free classified ads

As a MH resident, you get one free classified ad. Please submit copy by the 15th of the month. Notify the editor at 817.201.1909 or email: newsletter@mistletoeheights.org.

Editorial policy

Articles and letters to the editor are welcomed. To be published as written, letters must be addressed to the editor, signed, and include a phone number.

Anonymous letters will not be published. Articles may be submitted for publication, signed or unsigned, subject to approval and editing.

Contact information helps, especially if we have questions for you.

Letters to the editor are limited to a half-page (approximately 350 words). Please send email to: newsletter@mistletoeheights.org.

Advertising information

To place an advertisement or for actual mechanical sizes, please email:

advertise@mistletoeheights.org

Rates:

Business-card size \$25

1/4 page \$50

Half page \$100

Full Page \$200

Pre-printed inserts \$100

8 1/2 x 11

Deadline for ads, payment and artwork is the tenth of the month.