



# Mistletoe Express

www.mistletoeheights.org

June/July 2013

## President's Corner

Kyle Jensen

From the moment we wake up to those last minutes before bed, it seems like there is never enough time in the day—whether it's starting that first load of laundry or watering the garden or sitting in an hour of traffic before work only to sit in an hour of traffic after work and then inhaling dinner in order to take the kids to three different practices and then coming home in time to do homework and put the kids to bed to those last minutes spent looking over emails that needed answering a week ago. It seems like we have little time to think about volunteering for community projects. But busy schedules do not mean we have to write off community involvement. In thirty minutes or less, you can make a difference in the neighborhood.

Here are some ideas that might inspire you to help our community in the midst of your everyday activities:

- Take part in our local festivals or other events. Most of these events are free and raise money for nonprofit organizations, many of which are in our area. Nine out of ten times these festivals are the only way these organizations make money and since sponsors look at attendance numbers to decide how much to give, your family's presence can help increase what businesses give the following year.

- Carry a trash bag as you walk the block. Pick up any litter you see along the way. This does two things: it relieves stress through exercise and helps to clean up our neighborhood.



- Take leftovers from dinner to an elderly neighbor. If you have a family of four, cook enough dinner for five one night and deliver a plate to the widow next door. Your thoughtfulness will allow you to get to know your neighbors better and will foster a sense of community.

- Get out and vote! While the presidential election is held every four years, city and state elections take place every year. Educate yourself about the candidates; your vote really does count.

- Write a letter to Mr. Burns or Mayor Price to encourage them to make good decisions for Mistletoe Heights. People work harder when they know they are appreciated. And elected officials rarely hear encouraging words. Mayor's Office, Attn: Betsy Price, 1000 Throckmorton St., Fort Worth, Texas 76102. District 9 Office, Attn: Joel Burns, 1000 Throckmorton St., Fort Worth, Texas 76102

- Add a potted plant to your front porch. When a home is well-groomed, it's a promotion for the entire neighborhood and supports the community by putting our best foot forward.

- Shop at neighborhood businesses. A percentage of the sales tax goes directly to our community.

- Look for an opportunity to donate to our community. Many schools have collections such as canned foods, old coats, toys, and eyeglasses that benefit less fortunate families.

Continued Page 4

### Next Neighborhood Meeting

August 20, 7 pm  
Home of Susan and Brent Pressley  
2341 West Magnolia Ave.

#### Inside This Issue:

Page 2-5 - In The Neighborhood, Friday on the Green, Yard of the Month

Page 6 - Concerts In the Garden, Classes at Botanic Gardens  
Page 7 - New Neighbors

Page 8-10 - Storm Preparedness, Fun Runs, 4th Parade Info, Summer Reading, Pop Up Mrkt

Page 11-12- Meeting Minutes  
Page 13-14 - Dues Drive, Donors  
Page 15 -16 - Classif., Phone #'s

## What's Up in the Neighborhood



## What's Up in the Neighborhood





## President's Corner - Continued From Page 1

• Encourage your employer to sponsor a local event. Get involved in a city organization. Many companies have volunteer programs to reward employees for community service. News outlets often cover large volunteer events and having employee representation gives businesses added publicity.

• Have a conversation with your friends about the positive aspects of our community. A positive image encourages residents to support local businesses and will increase the chance of new businesses coming to our area.

• Read the "We Need Your Help!" column in the newsletter and join the Mistletoe Heights volunteers. See Page 13, check the volunteer box, and get to us. Set up a neighborhood event or volunteer to support them. You are reading this because of your neighbors. We need you!

By doing our part to contribute to the community, we add people to our circle of influence and gain opportunities to build relationships with our neighbors. It is also a way to set examples for our children—show them what it means to be a good citizen.

There are plenty of fun events to keep you close to home. Tell me what we can do to make our neighborhood better. We want to know what's important to you.

- Find us:
- Our Chat Room [www.facebook.com/groups/mhneighbors](http://www.facebook.com/groups/mhneighbors)
- On the back of your newsletter (drop us an email)
- Our webpage [www.mistletoeheights.org/contact](http://www.mistletoeheights.org/contact)
- Newby Park - Tuesday/Thursday at 5:00 pm for MH Boot Camp
- Our next members meeting (Aug 20 @ 7:00)

Join us as we make an effort to clean up our neighborhood and improve the quality of life for all those that live here.

— Kyle Jensen, MHA President



## Friday on the Green

Friday on the Green is a monthly concert series presented April through October by Fort Worth South, Inc. in partnership with the Fort Worth Weekly. The event is held at Magnolia Green, located on Lipscomb between Magnolia and Rosedale.

June 14, 7–10 pm

July 12, 7–10 pm

## RIDGLEA SWIMMING POOL

THINK SUMMER!

[swim@ridgleapool.com](mailto:swim@ridgleapool.com)

6700 Calmont Ave

Family, singles and senior memberships

Check us out on Facebook

**FREE SWIM LESSONS WITH MEMBERSHIP**

Open Memorial Day through Labor Day  
Please email for additional information or a membership packet

## In the Cultural District

### Amon Carter Museum of American Art

*Ed Ruscha: Made in California* through July 21

*Romare Bearden: A Black Odyssey* through August 11

*Sederick Huckaby: Hidden in Plain Site* through October 31

*We the People: Picturing American Identity* opens June 15

*Leonard Baskin: Indian Portraits* opens June 22

*Texas Regionalism* ongoing

### Kimbell Art Museum

*Permanent Collection*

*Wari: Lords of the Ancient Andes* opens June 16

### Modern Art Museum of Fort Worth

*Selections from the Permanent Collection* through August 11

*Tenth Anniversary Acquisitions* through August 18

# The Yard of the Month



## 2208 Weatherbee

Susan and Scott Harwell are the June/July Yard of Month recipients. This is the third time the Harwell's have received the Yard of the Month award. They live at 2208 Weatherbee and have been in Mistletoe Heights for over nineteen years. Susan is employed at Fort Worth ISD as a curriculum writer and Scott is a Reliability Engineer at Bell Helicopter. Susan's hobby is working in her yard during the week and on Saturday mornings. Their yard is landscaped with a wide range of plant species, including hawthorn bushes that outline her front porch and the yaupon trees in the front yard. Other flowers and plants include lilies, magnolias, and a few variants of clematis, including the Texas clematis. The yard also has several perennials and are some of Susan's favorites because they are easier to take care of. Like many of us, they have had a difficult time with the odd spring weather we are having. When you see Susan out working in the yard Saturday mornings, be sure to congratulate her. A big thank you to Calloway's Nursery for sponsoring this program again!

—William Ritter

## Support Our Advertisers!

The officers of the Mistletoe Heights Association encourage you to support the businesses that advertise in our newsletter. These organizations pay to be in our newsletter and support our neighborhood. Their business also makes this publication possible; without them we would not be able to provide printed newsletters to every household in the neighborhood free of charge. Help us to say thank you!

## New Advertising Submission Process

All ads must be paid for by the fifth of the previous month the ad will appear in. Artwork for all ads must be submitted by the tenth of the month prior. Artwork should be emailed to: [advertise@mistletoeheights.org](mailto:advertise@mistletoeheights.org). Should you have any questions, please call the newsletter editor, Stefanie Ball Piwetz, at 817.201.1909.

## We Need Your Help!

The neighborhood association is in need of volunteers!

We need a **Historic Preservation Committee** (three to five volunteers)! This committee now has a chair—Roger Ross! Roger has graciously volunteered to head up this group. He needs a few volunteers to sit on the committee. Please contact him or Kyle if you are interested. Roger Ross 817.372.6865, [rogandles@charter.net](mailto:rogandles@charter.net).

We need an **Events Planning Team**. Many of us love to stay close to our homes and mingle with our neighbors. Would you like to organize a special team that can plan events and work with the elected officers to coordinate and create write-ups for the newsletter? If this is you, please contact us.

If you'd like more information, contact Kyle Jensen at 940.367.1428 or [president@mistletoeheights.org](mailto:president@mistletoeheights.org).

## Join the Mistletoe Heights Email List!

To subscribe to the Mistletoe Heights Residents mailing list, go to [mistletoeheights.org](http://mistletoeheights.org), click on "Email list" and look for "Subscribing to Residents." Enter your name and email address, and then click "Subscribe." Note: You may need to add [residents-bounces@mistletoeheights.org](mailto:residents-bounces@mistletoeheights.org) to your address book to receive emails. If you have questions or concerns, contact [moderator@mistletoeheights.org](mailto:moderator@mistletoeheights.org).

Check out our website: [mistletoeheights.org](http://mistletoeheights.org)

Like us on Facebook.

Join us on Facebook: [facebook.com/mistletoeheights](https://facebook.com/mistletoeheights)

## What would you like to see in the newsletter?

We want your feedback! What topics would you like to see in the newsletter? Send us your suggestions: [newsletter@mistletoeheights.org](mailto:newsletter@mistletoeheights.org).



OUTDOOR SUMMER MUSIC FESTIVAL  
FIREWORKS EVERY NIGHT!

The 23rd annual Concerts In The Garden Summer Music Festival begins June 7 and offers sixteen nights of outdoor concerts, ending July 6. The concert series is held at the Fort Worth Botanic Garden located on University Drive and Interstate 30. Bring a picnic and relax on a blanket under the stars or reserve your own table for added comfort. The summer music series is a great bargain for families! Children 10 and under are admitted free on the lawn if accompanied by an adult, and children's table tickets are available at more than half off the adult price in select areas. For more information, visit: [fwsymphony.org](http://fwsymphony.org).

**Jeri Jo Blackmon**  
Professional Tax Services

**817-923-4393**

Email: [JeriJo@charter.net](mailto:JeriJo@charter.net)  
Enrolled Agent licensed by the IRS

1408 Mistletoe Drive  
Fort Worth, TX 76110

Cell: 817-925-7833  
Fax: 817-924-7733



**Residential Roofing Specialists**

No-Charge Estimates ♦ Reroof ♦ Repairs ♦ Inspections

**817-738-1756**

urbanYOGA  
YOGA

NIA

BARRE

[urbanYOGAfw.com](http://urbanYOGAfw.com)

1706 8th avenue, fort worth  
817-908-flow

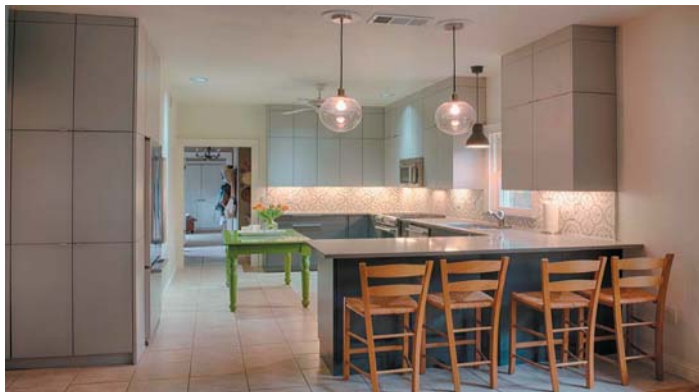
urbanYOGA

## Family Classes at the Botanic Gardens

Jun 11 @10am—Herbs with Rita Hottel  
June 18 @10am—Cement Leaves with Tammy Edwards  
July 23 @10am—Fall Vegetable Gardening with Pat Higgins  
July 27 @10am—Butterfly Puddler with Theresa Thomas

Contact Billie Hammack @ 817.884.1296 and/or  
[blhammack@ag.tamu.edu](mailto:blhammack@ag.tamu.edu) to reserve your spot.

**HT HOUSE TAILORS**  
RESIDENTIAL GENERAL CONTRACTORS



This is the after photo and the before photo of the kitchen we did this month. We were working with a very creative owner and the design is very different from anything else we have done recently.



Most design work is included in the fee.

Call Steve at:

682-553-3161

New Website: [housetailors.com](http://housetailors.com)

Email: [housetailors@yahoo.com](mailto:housetailors@yahoo.com)

## Dear Zoo Neighbor,

The Fort Worth Zoo's 7th annual premier tasting and music event, Beastro, is scheduled for Friday, June 7, 2013, from 7:30 to midnight. Every year, proceeds from Beastro support the Zoo's local and international wildlife conservation and education efforts. In addition to the exceptional cuisine from area restaurants, the event will feature open bars and live entertainment from headliner Starship.

We expect approximately 2,000 guests to attend this event.

As with all of our special events, we want to notify you in advance. We ask that you please share this information with the other residents in your subdivision and neighborhood.

We'd love to have you join us at Beastro! Visit the Zoo's website at [www.forthworthzoo.org](http://www.forthworthzoo.org) for more event information.

Thank you in advance for your understanding. If you have any questions or concerns, please contact me at [awilson@fortworthzoo.org](mailto:awilson@fortworthzoo.org) or 817-759-7375.

Sincerely,  
Alexis Wilson

### Dr. Kory S. Cummings

#### THERAPEUTIC OPTOMETRIST

1101 West Rosedale  
(S.E. corner Rosedale & Henderson)

**817-294-4834**

[www.weloveyoureyes.com](http://www.weloveyoureyes.com)



## Our New Neighbors

Lillian and Joe Greenslade returned to Mistletoe Heights in January to a new house designed by Joe at 2105 W. Morphy. They lived on Edwin from 1998 to 2005 after which they moved to Lake Worth. They love their new home and being back in this wonderful neighborhood.

Lillian and Joe both graduated from Paschal in the 1960s. Lillian has degrees from UTA and TCU. Joe graduated from Texas A&M. Joe was a small industrial business owner for 28 years. In 2007 he sold his business to his employees and became the Director of Engineering Technology for the Industrial Fasteners Institute. According to Joe, Lillian has been serving in the role of Domestic Goddess in an exemplary way for the past 20 years.

Lillian and Joe have four grown children and eleven grandchildren, unfortunately none living in Fort Worth. Lillian's passion is cooking and baking. She has won the title of the Best Cooking Competitor in the State Fair of Texas three of the past six years entering in excess of 60 entries each year. Joe has also competed in the State Fair in art and has won a number prizes in recent years. Joe's real passion, however, is his volunteer work as a Mentor to students in the AVID program at Paschal. He hopes to recruit several more Mentors, particularly retired teachers, from Mistletoe to work with he and his associates in the next school year. Joe says this is a great way to "pay it forward" and make a positive difference in the future of our community. Those who may be interested in becoming a Mentor are invited to contact him at [joe@joegreenslade.com](mailto:joe@joegreenslade.com).

### Natural Mosquito Repellant Spray:

You'll need a 16-ounce spray bottle. Add 15 drops of lavender oil, 3-4 tablespoons of vanilla extract, 1/4 cup of lemon juice, and fill the rest with water. Shake and spray!



**Control**  
**Strength**  
**Unity**



### The TRX® Suspension Trainer:

- A fast, effective total-body workout
- Helps build a strong core
- Increases muscular endurance
- Easily modified for people of all fitness levels
- Promotes weight loss
- Increases flexibility and balance
- Personal or small group training available



2424 Forest Park Blvd  
Fort Worth, TX 76110  
Ph: 817 690 8126

[www.csufitness.com](http://www.csufitness.com)



# HOME LOANS MADE EASY

*At Southside Bank, we make applying for a loan easier than ever! We offer:*

- *Conventional, VA, and FHA loans;*
- *Jumbo loans;*
- *Interim real estate loans; and*
- *Land/lot loans.*

*Contact a local mortgage loan officer today!*

*Near Downtown – 701 W. Magnolia  
West Fort Worth – 9516 Clifford St.  
Arlington – 2831 West Park Row*

**(817) 927-7730**

**SOUTHSIDE BANK**  
Member FDIC

www.southside.com



**Ask about our Affordable Home Loan Program.**

## Mistletoe Heights Association

### Income & Expenses

January through April 2013

	Jan - Apr 13
<b>Income</b>	
Advertising Income - Newsletter	2,481.00
Dues Donations	2,815.00
Interest Income	0.67
<b>Total Income</b>	<b>5,296.67</b>
<b>Expense</b>	
Bank/Check Fees	57.40
Flag Program - Triangle	120.00
Garage Sale Expenses	69.96
MHA Meetings	167.69
Neighborhood Activities	64.54
Newsletter Expenses	1,288.21
Water Expense - Newby	652.35
<b>Total Expense</b>	<b>2,420.15</b>
<b>Net Income</b>	<b>2,876.52</b>
<b>Bank Balance \$24,312.37</b>	

## Storm preparedness—have a plan!

- Designate a shelter area in your home or place of business, such as a basement, and go there during severe weather.
- If you don't have a basement or underground shelter, go to an interior room or hallway on the lowest floor and get under a sturdy piece of furniture or put a mattress over you. Lower-level interior bathrooms provide the best protection if no basement is available. Don't seek shelter in bathrooms that have a window or an exterior wall.
- Stay away from windows.
- Always abandon mobile homes.
- If you're in a vehicle and no shelter is available, get out and find the lowest-lying area. Lie flat on your stomach and cover your head with your hands. Do not hide under overpasses or in ditches.

## 4th of July Parade Info

Volunteers and Sponsors are desperately needed  
July 4 @ The Triangle, Time TBA  
Details to follow from volunteer team...

## Fun Runs in the Area

June 8, 8:00 pm  
**Joe's Run 5k/10k**  
joesrunfw.com

June 15, 8:30 am  
**Juneteenth Freedom Fest—walk**  
juneteenthfw.com

June 29, 7:30 am  
**Jalepeño Half**  
jalepenohalf.com

July 21, noon  
**FWRC's Hi-Noon Shootout**  
fwrnners.org

August 11, 8 am  
**FWRC's Watermelon 5K and 1-Mile Relay**  
fwrnners.org

September 2, 7:30 am  
**FWRC's Labor Day 15K/5K**  
fwrnners.org

## Summer Reading for Kids and Adults

### Kids:

*The Wings of Fire Series—The Dragonet Prophecy, The Lost Heir, and The Hidden Kingdom* by Tui T. Sutherland

In this trilogy, five young dragons are destined to end the war that's been raging between the tribes of Pyrrhia—but how they'll do this, none of them knows.

Not every dragon wants a destiny. When one of their own is threatened, Clay and his friends decide to escape. Maybe they can break free and end the war at the same time, or maybe they'll risk everything.

*One Crazy Summer* by Rita Williams-Garcia

—New York Times Bestselling Author, Set during one of the most tumultuous years in recent American history, this is the heartbreaking, funny tale of three girls who travel to Oakland, California, in 1968 in search of the mother who abandoned them. It's an unforgettable story told by a distinguished author of books for children and teens. Winner of the 2011 Coretta Scott King Author Award, the 2011 Scott O'Dell Award for Historical Fiction and the 2011 Newbery Honor Book.

### Adults:

*The Language of Flowers* by Vanessa Diffenbaugh

—New York Times Bestseller, After a childhood spent in the foster-care system, Victoria Jones is unable to get close to anyone, and her only connection to the world is through flowers and their meanings. Now eighteen and released from the system with nowhere to go, Victoria realizes she has a gift for helping others through the flowers she chooses for them. But an unexpected encounter with a mysterious stranger has her questioning what's been missing in her life. And when she's forced to confront a painful secret from her past, she must decide whether it's worth risking everything for a second chance at happiness.

*A Dog's Purpose* by W. Bruce Cameron

—New York Times Bestselling Author, After a tragically short life as a stray mutt, Bailey is surprised to find himself reborn as a rambunctious golden-haired puppy. Bailey's search for his new life's meaning leads him into the loving arms of eight-year-old Ethan. During their countless adventures, Bailey joyously discovers how to be a good dog. But this life as a beloved family pet is not the end of Bailey's journey. Reborn as a puppy yet again, Bailey wonders, will he ever find his purpose? Heartwarming, insightful, and often laugh-out-loud funny, *A Dog's Purpose* is not only the story of a dog's many lives but also a dog's-eye commentary on human relationships and the unbreakable bonds between man and man's best friend. This beautifully crafted novel teaches us that love never dies, that our true friends are always with us, and that every creature on Earth is born with a purpose.



BOTANICAL RESEARCH  
INSTITUTE OF TEXAS

Plant to planet.®



## Explore with us!

Day camp at BRIT® is full of  
outdoor fun and learning.

Dig in, get dirty, and experience hands-on fun with BRIT scientists and educators. Campers spend the week working alongside scientists to investigate habitats, have fun with nature games, and so much more!

**Little B.I.T.™ - Botanist In Training**  
(students entering grades K - 1)

**Our Plants, Our Place**  
(students entering grades 2 - 5)

**Sustainable by Nature's Design**  
(students entering grades 6 - 8)

Week-long camp sessions offered June - August.  
Register now at [BRIT.org](http://BRIT.org) for a program to fit your  
blossoming scientist!

ph 817.332.4441 | BRIT.org  
1700 University Drive | Fort Worth, TX 76107-3400  
Follow us @BRIT\_org | Facebook.com/BRITorg

a 501(c)(3) charitable organization

## Mediterranean flavors infused with Southern Hospitality.



**CHADRA**  
MEZZA & GRILL

Southern Hospitality. Mediterranean Flavor.  
1622 Park Place Avenue | [www.chadramezza.com](http://www.chadramezza.com)  
Fort Worth, TX 76110 | 817.924.2372



**I have buyers searching for homes in:**

**76109/Tanglewood - 76107 - 76110**

If you live in these areas and are considering a move,  
I may be able to help you make the process smoother,  
help to maximize your equity and customize the timing  
to fit your family's needs

(817)992-9232

AskRuthStory@gmail.com

Visit our website often for market updates, and other  
helpful information!

[www.RuthStoryOnline.com](http://www.RuthStoryOnline.com)



## Pop-up Market

Pop-up Market is an outdoor shopping destination in the Near Southside. Shop handmade jewelry, art, collectibles and more. Dozens of artists, collectors, and crafters will setup once a month at Magnolia Green. Pop-up Market is held on Saturdays following Fort Worth South, Inc.'s Friday on the Green. Events benefit Ronald McDonald House. Saturdays, June 15 and July 13, 10 am–6 pm

**PARK PLACE  
PHARMACY**

Business Hours:

Monday - Friday

9:00am to 6:00pm

Closed Weekends  
& Holidays

Craig Nicholson, RPh

Monique Nicholson, RPh

Your Neighborhood Pharmacy

Phone: 817-924-9292

Fax: 817-924-9264

1601 Park Place Ave, Suite B  
Fort Worth, TX 76110-1303

## PLEASE DON'T FENCE ME IN

In case you didn't know, I'm more than  
just a Mistletoe Heights' area Realtor—  
I represent buyers and sellers all over  
Fort Worth, Tarrant County and beyond.



*Call me with all  
your real estate  
needs & questions.*

*Gaye Reed*



817-688-1952  
[gaye.reed@cbfw.com](mailto:gaye.reed@cbfw.com)



## GREAT CAR BUYING EXPERIENCE

**BOB BOURLAND**  
MISTLETOE HEIGHTS NEIGHBOR

- Frank Kent Honda Sales Associate for over 9 years
- Gold Master for the last five years, the top award given by Honda
- TCU graduate
- Retired from Tandy Corporation/Radio Shack
- Married for 48 years

[rd.bourland@yahoo.com](mailto:rd.bourland@yahoo.com)  
cell 817.266.7693 | work 817.696.4144



**FRANK KENT**  
HONDA

3400 West Loop 820 South  
Fort Worth, TX 76116  
[FrankKentHonda.com](http://FrankKentHonda.com)

# Minutes of the 21 May 2013 Mistletoe Heights Association Meeting

## **Report from Beth Krugler on Welcome Baskets**

Beth and Alex Rodman have been delivering welcome baskets to new residents of Mistletoe Heights. If you see neighbors moving in, please contact Beth or Alex through the neighborhood email. If you have any pull with local businesses to get some freebies or discounts that would be useful to new neighbors, or you have donations for the baskets, please share the information with Beth and Alex.

## **Newsletter**

Please send any updates, photos, or articles to [newsletter@mistletoeheights.org](mailto:newsletter@mistletoeheights.org)

## **Neighborhood Directory**

Irene Stemple and Nicky Aubry have volunteered to work on updates to the neighborhood directory.

## **MH website**

<http://www.mistletoeheights.org/index.html>

Mike Danella has volunteered to help Scott Ewing (MH Webmaster) as Web Editor. Scott is looking for historic photos of the neighborhood to post on the MH website. Please send them to [webmaster@mistletoeheights.org](mailto:webmaster@mistletoeheights.org)

## **Report from Aaron Schutt regarding Gas Lease**

Everyone in MH that owns their mineral rights should have received their Division Order from XTO. The enclosed documents will need to be signed and returned before any royalties are received. Every person listed on the document must sign. In case of divorce or death, call XTO.

On May 9, 2013, Dyani Merkley sent an email with a formula to calculate the decimal interest. If your calculation using the formula (or Excel spreadsheet) in the email does not match up with XTO's, you may wish to contact XTO. 866-886-2613 Your first check should arrive 30 to 60 days after signing the DO.

## **Treasurer's Report from JeriJo Blackmon**

Treasurer's hard copy was passed out.

## **Miscellaneous Items**

There is a boot camp (exercise program) in Newby Park Tuesday and Thursday at 5:00pm.

Kyle Jensen would like to have a MH Awards Dinner in the fall. Suggested awards: Yard of the Year, Neighbor of the Year, etc.

We need help with July 4th parade and ice cream social organization.

MH has never been recognized in the League of Neighborhoods. Kyle plans on having MHA recognized this year. <http://www.fwlina.org/>

Question from Mike Danella: What does it take to have MH streets better maintained/resurfaced by the city?

**Continued on Page 12**

# Minutes of the 21 May 2013 Mistletoe Heights Association Meeting

**Meeting was held at 1414 Mistletoe Dr, Home of Jim and Carol Shaw, starting at 7:00pm.**

## **Emergency Preparations**

A map of the neighborhood was passed around. Those wishing to could mark their home if it had a basement or storm shelter and if they were willing to have neighbors join them in case of severe weather. Richard Zavala suggested checking out the city website <http://fortworthtexas.gov/emo/> for information on emergency preparedness.

## **Report from Richard Zavala, Fort Worth Director of Parks and Community Services Forest Park Pool <http://fortworthtexas.gov/forestparkpool>**

Forest Park Pool was built in 1922 at a cost of \$20,000. The pool was closed at the end of the summer of 2010. It was the last of the city's seven public pools closed due to dwindling resources and high maintenance costs.

The City Council was given a \$500,000 grant from The Radler Foundation for refurbishing Forest Park pool. The city matched the grant with \$330,000 from reserve funds. The Forest Park pool will have a rededication Saturday, 25 May 2013 at 10:00am and the pool will be open for swimming at that time.

Joel Burns will host a fund-raiser at the pool, Thursday night, 23 May from 6:30 to 8:30pm. The cost will be \$25.00 and all funds raised will be used to provide swim lessons. The fundraiser will include beverages from Rahr Brewery and Times Ten Cellars, food from Tommy's Hamburgers, music, and a visit from some zoo animals.

## **Volunteer Opportunities**

**The city always needs volunteers. Below are some links regarding volunteer opportunities.**

Community Action Partners Program <http://fortworthtexas.gov/pacs/cap/> The City of Fort Worth's Community Action Partners (CAP) serves as the Community Action Agency for Tarrant County and provides comprehensive services to economically disadvantaged individuals, families and the elderly.

Animal Shelter <http://fortworthtexas.gov/animals/volunteer/>  
Fort Worth Botanic Garden <http://fwbg.org/volunteer-options/>

## **Report from Susan Pressley regarding Forest Park Road Diet**

<http://fortworthtexas.gov/fwtv/> (Select 05/14 PRE-COUNCIL MEETING presentation starts at about the 51:15 count. The meeting agenda will also appear next to video, select item#8)

Douglas Weirsig, FW Director of T/PW, gave a presentation about the FP road diet at the pre-council meeting on 14 May 2013. It addressed the speeding and accidents on FP, maintaining current capacity, estimated vehicle delays and showed a computer simulation of traffic flow with a road diet.

T/PW is currently doing public input meetings until the end of May. After that, they will begin scheduling the work with a completion date set for July.

## **Report from Ben Belsher on the Mistletoe Blvd Apartment Complex**

There are six or seven MH residents on the committee. The committee has met with the project architect. The architect has been the president of a historic neighborhood association in the past. The land is under contract and construction is scheduled to begin June 2014 and is estimated to take eighteen months. There will be 216 apartments, termed luxury apartments by the developers, 55 feet above ground. Parking garage will be under the apartments. The committee is also addressing traffic issues with the developers.

# Mistletoe Heights Association

## Annual Dues Drive

All residents of Mistletoe Heights are members of the association and dues donations are completely voluntary. Any amount is welcomed and appreciated. In addition to the seasonal social gatherings, landscape maintenance, newsletter and directory publications, dues donations fund a number of special projects.

Our annual dues drive begins in April and continues through October. You will see this flyer in our newsletter each of those months as we collect dues donations for our neighborhood association. New this year -- we will recognize donors in EVERY newsletter through October with the final recognition published in our December issue.



Levels of giving for this year are:

Mistletoe – up to \$25

Holly - \$26 to \$50

Gardenia - \$51 to \$75

Magnolia - \$76 and up



Thank you for supporting your neighborhood association.  
Together we can make Mistletoe Heights an even better place to live.

\$25

\$50

\$75

\$ Other

Please return your dues  
donation to:

Name: \_\_\_\_\_

Address: \_\_\_\_\_

Mistletoe Heights Association  
c/o Jeri Jo Blackmon  
1408 Mistletoe Drive  
Fort Worth, TX 76110

☐

Please check here if you wish your donation to remain anonymous

Check here if you can volunteer some time to our association and include a  
telephone number to reach you \_\_\_\_\_

## Mistletoe Heights Association Supporters

As of May 2013

### Magnolia

Csanadi, Randy	Krugler, Beth	Muller, Mark & Lynn
Ellis, Luke & Terri	McReynolds, Steve & Kathy	Oliver, Nora
Ettinger, Alan & Phyllis	Miller, Brian & Ashley	Parrish, Bill & Sue
Grunde, Paul	Mitchell, Mark & Susie	Sybesma, Richard & Wendy
		Wilson, Gene & Gail

### Gardenia

Barnes, Barbara	Brewer, Tom & Teri	Hornsby, Michael & Donna
Bourland, Bob & Anne	Eastepp, Rosaline	Proctor, John

### Holly

Anonymous	Hale, Tommy & Pat	Piwetz, Robert & Stefanie
Belsher, Ben	Hotard, John & Susan	Rustad, Eric & Nikki
Brady, Walter & Margaret	Marcus, Rick & Tabbatha	Shaw, Jim & Carol
Camp, Claudia & Gunn, David	Martin, William	Sippel, Jimmie Dick
Daugherty, Mark & Joanna	McQuerns, Sam & Martha	Thompson, Doug
Dierker, Charlie & Kathy	Myers, Mike & Diane	Tyson, Gerry & Meralen
Dowdle, Roy & Faye	Patton, Eddie	Willis, Gary & Susan

### Mistletoe

Anonymous	Halbach, Joe & Melodee	Pereth, Hank & Linda
Blanton, Paul & Wendy	Hobson, Jack & Nancy	Scales, William + Danilo Alejandro
Brous, Michie & Nancy	Mayes, Michael & Karen	Sisk, Betty
Cetto, Allen & Cheri	McDonnell, Mac & Joni	Stemple, Irene
Cole, Willard & Aline	McKeever, Kent & Rebecca	Woodson, Jim & Moore, Barbara
Fershtand, John & Chris	Peipert, Jim & Mary Ellen	

Thank you, neighbors for your donations to our neighborhood association!

There is still time to get your dues in to be included on next month's donation list. We appreciate any amount you can give. We put your funds to use through neighborhood activities, newsletters, landscape maintenance and other activities. Please join us!

See the flyer in this month's newsletter for information on how to donate.



#### 2013 Levels of Giving

Magnolia - \$76 and up  
Gardenia - \$51 to \$75  
Holly - \$26 to \$50  
Mistletoe - Up to \$25

## FREE CLASSIFIED ADS

### RESUME, COVER LETTER AND APPLICATION ESSAY WRITING

Need a resume, or just need to update what you have? Call or email Mistletoe neighbor Alexandra "Alex" Rodman who specializes in resume design; cover Letter and application essay writing; and interview preparation. For a minimal cost, you'll look like a million bucks on paper!

Contact Alex at 773-726-1488 or alrodman@yahoo.com

\*\*\*\*\*

### ESTATE SALE SERVICES

- Estate Sales & Appraisals Experienced, reliable estate sales in and out of Mistletoe Heights since 1992. Certified Appraiser, International Society of Appraisers. Appraisals for insurance, estate evaluations, donations; whatever your needs.

Contact: Terri Ellis, Mistletoe Estate Sales, 817-926-9424 or email tqilts@mac.com

\*\*\*\*\*

TUTOR, K-3rd grade. Caring, encouraging, experienced (12 years) certified elementary school teacher is offering tutoring this summer.

Contact Kathy Jo Rogers at 817.688.0905 or kathyjorogers@sbcglobal.net.

\*\*\*\*\*

HOME WANTED We'd like to buy a home - from an owner - no agents, please! 817-732-3836.

\*\*\*\*\*

### 26 YEARS EXPERIENCE IN TEACHING. Tutoring

Pre-K-2nd Grade. Is your child falling behind? Need some one-on-one attention? Don't want your child to lose what they've learned over the summer? I can help! Call Joy Ridler at 817.637.5541.

\*\*\*\*\*

### ADULTS ENJOYING THE PIANO TOGETHER

We focus on fun! Small group classes for newbies & re-learners in Mistletoe Heights ~ keyboard skills ~ music literacy ~ drumming ~ reading music made easy ~ proven curriculum ~ degreed teacher ~ 8-week sessions ~ Call about \$0 preview class. Contact Carol E. Spencer at carolingfw@sbcglobal.net or 817.927.3240.

\*\*\*\*\*

### GOING OUT OF TOWN?

Call Riley Gensheimer. Neighborhood teenager available for pet sitting and plant watering while you are away. \$10- \$15 per day. Call Riley Gensheimer at 817-991-8214.

PIANO LESSONS for beginners and intermediates. Mary Smith, 2300 W. Magnolia Ave. 817-927-8876.

\*\*\*\*\*

### TAX PREPARATION

Jeri Jo Blackmon, former IRS Agent and current Enrolled Agent licensed by the IRS will prepare and e-file your individual or business tax returns. Also, as a QuickBooks Pro Advisor, training is available for individuals or businesses who want to improve their skills or learn new skills using QuickBooks accounting software.

Contact Jeri Jo Blackmon at 817-923-4393 or email JeriJo@Charter.net. 1408 Mistletoe Drive.

\*\*\*\*\*

MISTLETOE HEIGHTS PET SITTERS is now booking for your vacation, or any other time.

References available on request. www.mistletoeheightspetsitters.com or 817-247-2870

\*\*\*\*\*

HARPIST: Sally Sledge ministers on the harp as a worshiper, psalmist and vocalist. She has recorded two CDs: "Return to Your Rest" and "Cherished Times". She is available to play for home groups, church events, Bible studies, weddings, funerals, dinner parties or any special occasion. For more information and song samples, you may access her web site at www.sallysledge.com.

\*\*\*\*\*

HANDYMAN IN YOUR NEIGHBORHOOD No job is too small. I live on Edwin and have local references. Have over 30 Years experience in remodel. Call Terry 817.454.1795 free estimates!!

\*\*\*\*\*

COMPLETE PROPERTY RENOVATION: Demolition, cleanup, specializing in historic home renovations, painting, wallpaper. Contact Jeff Cuninghame at 817-988-7113.

\*\*\*\*\*

LEARN TO SWIM LESSONS -With emphasis on Olympic strokes. Contact Richard Sybesma, Head Swim Coach, TCU Box 297600, Fort Worth, TX 76129; 817-257-5646 or 817-257-7963

\*\*\*\*\*

### PIANO LESSONS

For beginners and intermediates. Mary Smith, 2300 W. Magnolia Ave. 817-927-8876.

\*\*\*\*\*

## SO MUCH PLANNING GOES INTO RETIREMENT.

### HAVE YOU THOUGHT ABOUT TAXES AS WELL?

It's likely that your retirement income may come from many sources, such as Social Security, pension distributions, a 401(k) or IRA withdrawals. That's why, if taxes are a concern for you, it's important to choose the right investments for your portfolio. At Edward Jones, we have many options that can give you more control over your taxes, so you can enjoy what you've worked so hard to achieve.

Edward Jones, its employees and financial advisors cannot provide tax advice. You should consult with a qualified tax specialist for professional advice on your specific situation.

**Call today to see how our unique, face-to-face approach makes us best-suited to help long-term investors meet their current needs and future financial goals.**



**Bruce C Border, CFP®**  
Financial Advisor

2453 Forest Park Boulevard  
Ft Worth, TX 76110  
817-926-8056

www.edwardjones.com Member SIPC

**Edward Jones**  
MAKING SENSE OF INVESTING

# Helpful Phone Numbers, Emails, Addresses and Websites

## City information

City Code violations	817.392.1234
City of Fort Worth	817.392.2255
fortworthtexas.gov	
Police—nonemergency	817.335.4222
Garage sale permits	817.392.7851
Graffiti abatement	817.212.2700
Lily B. Clayton Elementary	817.922.6660
schools.fwisd.org/clayton	
Paschal High School	817.814.-000
paschalhs.org	
Historical Preservation	
Liz Casso	817.392.8037
liz.casso@fortworthtexas.gov	
Southside Preservation Hall	817.926.2800
Hallyes@earthlink.net	
southsidepreservation.com	
The T/Longhorn Trolley	817.215.8600
the-t.com	
Trinity Railway Express	817.215.8600
trinityrailwayexpress.org	
City Council District 9	
Joel Burns	817.392.8809
district9@fortworthtexas.gov	

## MHA officers

officers@mistletoeheights.org	
President	
Kyle Jensen	940.367.1428
president@mistletoeheights.org	
Vice President	
Ben Belsher	817.919.8375
vicepresident@mistletoeheights.org	
Secretary	
Rosaline Eastepp Takes	817.207.9750
secretary@mistletoeheights.org	
Treasurer	
Jeri Jo Blackmon	817.923.4393
treasurer@mistletoeheights.org	
Newsletter Editor	
Stefanie Ball Piwetz	817.201.1909
newsletter@mistletoeheights.org	

## Volunteers

Historic Preservation Committee	
Roger Ross	817.372.6865
rogandlesa@charter.net	
Street Rep Captains	
Melissa Kohout (East side)	817.313.1419
Gaye Reed (West side)	817.921.0009
Welcome Baskets	
Beth Krugler	817.713.0993
Alexandra "Alex" Rodman	773.726.1488
Advertising Manager	
Nancy Medford	817.201.1906
advertise@mistletoeheights.org	
Newby Park	
Marjorie Day	817.914.8057
Email Moderator	
Richard Yantis	817.924.2857
Webmaster	
Scott Ewing	214.403.7762

## Street reps (listed by blocks)

East of Forest Park	
2200 W. Rosedale South	
Dottie Guffey	817.921.6288
2200 Irwin	
Gary Willis	817.924.4000
2100/2200 Mistletoe Blvd.	
Melissa Kahout	817.313.1419
2100/2200 West Magnolia	
Mecca Givens	817.927.2244
2200 Harrison	
Aaron Torkelson	817.907.5533
2100 Harrison Ave.	
Vacancy	
2100 Mistletoe Ave.	
Pat Hale	817.924.5263
2200 Mistletoe Ave.	
Richard & Christi Yantis	817.924.2857
2100/2200 Edwin	
Katrina Pittman	817.921.2221
2100 Weatherbee	
Judy Gude	817.926.8843
2200 Weatherbee	
Susan Harwell	817.923.8806
2100 Morphy	
Vacancy	
Forest Park Blvd.	
Steve McReynolds	817.926.7955
West of Forest Park	
2300 W. Rosedale South	
Kimberly Helixon	817.927.4641
2300 Irwin	
Sue Duvall	817.926.8714
2300/2400 Mistletoe Blvd.	
Lisa Stewart	817.924.9666
2300 West Magnolia	
Susan Pressley	817.923.6061
2300/2400 Harrison	
Robert DeVargas	817.923.9393
2300 Mistletoe Ave.	
Jason Fuller family	
2300 Edwin	
Grant Pannell	817.924.0051
1100 Clara	
Marc & Kathy Jo Rogers	817.923.3304
1200 Clara	
Betty Arvin	817.924.7088
1100 Buck	
Kate Herring	817.923.3843
1200/1300 Buck	
Trisha Dianne Stemple	817.926.6546
Mistletoe Drive	
Meralen & Gerry Tyson	817.926.5909
2300 Mistletoe Drive	
Chris Fershtand	817.923.8422
Carol Benson	817.921.4000

## Neighborhood police officers

Sidney Keith (West)	817.944.1038
David Cloninger (East)	817.992.0181

## MHA yearly memberships

Voluntary dues are \$15, \$25, \$50 or whatever you can afford. Your dues help pay for this newsletter, the Mistletoe Heights phone directory and many neighborhood functions. Please make your check payable to Mistletoe Heights Association. Mail to: Jeri Jo Blackmon, 1408 Mistletoe Drive.

## Free classified ads

As a MH resident, you get one free classified ad. Please submit copy by the 15th of the month. Notify the editor at 817.201.1909 or email: [advertise@mistletoeheights.org](mailto:advertise@mistletoeheights.org).

## Editorial policy

Articles and letters to the editor are welcomed. To be published as written, letters must be addressed to the editor, signed, and include a phone number.

Anonymous letters will not be published. Articles may be submitted for publication, signed or unsigned, subject to approval and editing.

Contact information helps, especially if we have questions for you.

Letters to the editor are limited to a half-page (approximately 350 words). Please send email to [newsletter@mistletoeheights.org](mailto:newsletter@mistletoeheights.org).

## Advertising information

To place an advertisement or for actual mechanical sizes, please email Nancy Medford at [advertise@mistletoeheights.org](mailto:advertise@mistletoeheights.org)

### Rates:

Business-card size \$25  
1/4 page \$50  
Half page \$100  
Full Page \$200  
Pre-printed inserts \$100  
8 1/2 x 11

Deadline for ads, stories and letters is the tenth of the month.