



# Mistletoe Express

www.mistletoeheights.org

December 2012-January 2013

## OBITUARY

### Norman R. Stemple, 1933-2012

*Norm and Irene Stemple have been Mistletoe residents since 1967. Here is the obituary that ran in the Star-Telegram on November 14, 2012.*

Norman Rinehart Stemple, 79, died Sunday, Nov. 11, 2012, at his home after losing his fight with cancer. Memorials: Should friends desire, memorials may be given to Trinity Lutheran Church. Norman was born March 7, 1933, in Lock Haven, Pa. After graduation from high school in Salem, Va., he received his bachelor's degree in physics from Roanoke College, his M.S. in physics from Penn State

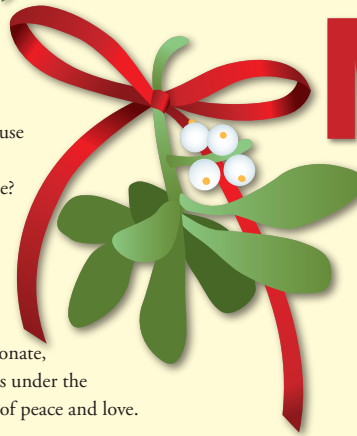
*Continued on Page 5*

*You are invited to . . .*

## EAT, Drink & BE MERRY

### MISTLETOE HEIGHTS NEIGHBORHOOD HOLIDAY PARTY

Today, **mistletoe** is used as an excuse to kiss but did you know that in ancient times it was a sign of peace? Enemies meeting under a **mistletoe** branch were required to immediately lay down their weapons and declare peace. We are blessed to live in a wonderful neighborhood full of caring, passionate, and very fun people. Please join us under the **mistletoe** to celebrate this season of peace and love.



5-8 p.m.

Sunday, December 2, 2012

Jim & Carol Shaw's House

1414 Mistletoe Drive

*Bring an appetizer or dessert &  
your most joyous holiday spirit!*

## FOREST PARK STRIPING CHANGES

### Road diet has been approved

(This email was sent Nov. 16, 2012 from Alonzo Linan)

At last the communication that everyone has been waiting for!

I want to thank everyone for participating in this decision process. The number of emails, phone calls, personal visits and letters is a reflection of the care each resident has in their neighborhood and the desire to keep them great.

After significant deliberation, a review of the data, considering all of the comments received and with the concurrence of Councilman Burns, the Transportation & Public Works Department is recommending proceeding with restriping Forest Park Boulevard to

a 3-lane facility with bike lanes – what is commonly known as a Road Diet. The restriping of the street will look very much like what was seen at the open house with only slight modifications to reflect some of the comments heard.

I know that this process may have seemed long for some (and too short for others). Unfortunately, because of the time it has taken to reach this decision, the schedule for this work has been pushed back until Spring 2013. This also gives us an opportunity to integrate our actions with the Chisholm Trail Parkway and other planned nearby closures and construction activities.

As part of this process, there are some

very strong views on both sides of this issue. Additionally, those who may be disappointed in this decision deserve to have their concerns addressed. Please see the attached for that summary. We have also updated the city web page with this latest information. If you have any questions that you feel were not addressed, please feel free to contact me at [Alonzo.Linan@fortworthtexas.gov](mailto:Alonzo.Linan@fortworthtexas.gov).

Again, thank you for participating in this process and in helping make Fort Worth a better place to live and work.

— Alonzo Linan, PE, PTOE  
Transportation/Public Works  
Department Assistant Director, Traffic  
Management Division, City of Fort Worth  
5001 James Street, Fort Worth, TX 76115  
817-392-7861 (Office)

**More info on ROAD DIET on Page 8**

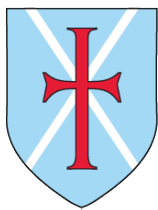
## Inside This Issue

Page 3 - MHA new officers  
Page 4 - Join MH e-mail list  
Page 5 - Ad rates change in Feb.

Page 6 - Welcome baskets  
Page 7 - 7th Street bridge timeline  
Page 8 - Road Diet response summary

Page 9-10 - Classified ads  
Page 11 - MH Treasurer's Report  
Page 12 - Important numbers

**Merry Christmas and  
Happy New Year!**



SAINT ANDREW  
CATHOLIC SCHOOL

3304 Dryden Road  
Fort Worth, TX 76109

Phone: (817) 924-8917

*Have you met the wonderful faith-filled students right down the street?*



*We would  
love to  
meet You!*

*Open House  
Celebration  
and  
Tours*

*Sunday,  
January 27  
10 a.m. – 1 p.m.*

Please come and see for yourself why some of your neighbors love being a part of the St. Andrew Catholic School Family....

- ❖ An environment, rooted in Jesus' message, where spiritual growth is a daily priority in educating your children.
- ❖ Outstanding academic programs for your Preschool through 8th grade children.
- ❖ A top-notch Preschool offering Monday through Friday full-day classes for 4-year-olds, and half-day classes on MWF or T/TH for 3- and 4-year-olds.
- ❖ Affordable private school option just minutes from Mistletoe Heights. (SAS tuition is half the cost of most other Fort Worth private schools)
- ❖ Personal tours available anytime by appointment: 817-924-8917.

*"Our son, Charlie, has blossomed at SAS because it is truly a family. The older students take the younger children under their wings; and together, they explore, learn and grow in an environment of service and faith. We couldn't ask for anything better for our children."*

*-Alexandra Rodman,  
Mistletoe neighbor*



[www.standrewsch.org](http://www.standrewsch.org)

*"Everyday, Zoe comes home from SAS preschool with a song on her lips and joy in her heart!"* - Linda Pereth, Mistletoe Neighbor



# New officers for 2013

At the November 13 neighborhood meeting, new officers were elected for the position of President, Vice-President, Secretary, and Treasurer. Stefanie Ball Piwetz has agreed to become the Newsletter Editor to replace Cynthia Wahl.

The newly elected officers are as follows:

President – Kyle Jensen

Vice Pres. – Ben Belsher

Secretary – Rosaline Eastepp

Treasurer – Jeri Jo Blackmon

Newsletter Editor – Stefanie Ball Piwetz

I would like to thank the previous officers for their service: Walter Brady - Vice President, Lisa Gowan - Secretary, and Cynthia Wahl - Newsletter Editor. Thanks to Jeri Jo for continuing in the position of Treasurer.

— Mike Danella, MHA President



## MEET THE NEW PREZ

# Kyle Jensen, MHA President 2013

Kyle joined MHA's board of directors as president in late 2012. He brings tons of new energy, sound initiatives, great determination and vigor to create an environment of community, loyalty and pride. These qualities in a neighborhood translate into dollars in home values. Kyle's gung-ho plans and can-happen attitude is a breath of fresh air for Mistletoe Heights. He is currently talking with neighbors to create a team of leaders. After majoring in architecture, Kyle embarked on a career in the aviation industry and has worked as a senior designer for 12 years. He is

communications director of SteerFW, an initiative of Mayor Betsy Price to engage young people in city government through task forces aimed at tackling some of the Fort Worth's biggest problems. He is an avid cyclist and a proud supporter of the Mistletoe Heights neighborhood biking group.

If you would like more information about Kyle or want to chat with him, join his Facebook page at [www.facebook.com/ykyle](http://www.facebook.com/ykyle) and also link up with the neighborhood Facebook page at [www.facebook.com/mistletoeheights](http://www.facebook.com/mistletoeheights).



<http://www.facebook.com/mistletoeheights>

**Thank you, Mike, for presiding over a tumultuous MHA year! We appreciate you!**



# The BEST Christmas Pageant Ever!

Directed by: Deborah Jung

**December 14-23, 2012**

**The Scott Theatre**

**Tickets \$15 - \$18**

**Group Rates Available**

**kidswhocare.org**

**817.737.5437**

## Get on the Mistletoe Heights email list

To subscribe to the Mistletoe Heights Residents mailing list, go to [www.mistletoeheights.org](http://www.mistletoeheights.org), click on "Email List" and look for the section "Subscribing to Residents". Enter your email address and name and click "Subscribe". Be aware that you may need to add [residents-bounces@mistletoeheights.org](mailto:residents-bounces@mistletoeheights.org) to your address book so the incoming emails are not treated as spam. We're still missing lots of neighbors on the email list. If you have any questions or concerns about the email list, contact [moderator@mistletoeheights.org](mailto:moderator@mistletoeheights.org).



Check out  
our website:  
[www.mistletoeheights.org](http://www.mistletoeheights.org)

## Owens Fencing

Custom-built cedar privacy fences  
Built on-site to your specifications

**Free Estimates**

Scott Owens  
**817-975-1312**

## Mediterranean flavors infused with Southern Hospitality.



**Southern Hospitality. Mediterranean Flavor.**  
1622 Park Place Avenue | [www.chadramezza.com](http://www.chadramezza.com)  
Fort Worth, TX 76110 | 817.924.2372

## HT HOUSE TAILORS RESIDENTIAL GENERAL CONTRACTORS



We love remodeling and we love helping our customers achieve their dreams. This dream kitchen on Park Place is no exception. Custom cabinetry, marble and granite tops with glass tile backsplash and refinished oak floors. Most design work is included in the fee.

Call Steve at: 682-553-3161  
[housetailors@yahoo.com](mailto:housetailors@yahoo.com)

## HAPPY HOLIDAYS



During this holiday season and every day of the year, we wish you all the best.



**Bruce C Border, CFP®**  
Financial Advisor  
2453 Forest Park  
Boulevard  
Ft Worth, TX 76110  
817-926-8056

[www.edwardjones.com](http://www.edwardjones.com) Member SIPC

**Edward Jones**  
MAKING SENSE OF INVESTING



# Norm Stemple

From Page 1

and his Ph.D. in physical chemistry from TCU. His professional career included nine years with IBM Research, eight years with TCU and 17 years with Alcon Labs. Following retirement in 1992 he and his wife enjoyed visiting their children, grandchildren and friends, and touring distant lands. They visited 30 countries and all seven continents. An important goal in his retirement years was to be involved in community service. He volunteered at Tarrant Area Food Bank for 18 years, Guardianship Services for 16 years and several years as a computer instructor at Senior Net and The Bridge School. During the off-golf season he was a part-time tax preparer at H&R Block. And also was an active choir member at Trinity Lutheran Church for several years. Survivors: His wife of 55 years, Irene; brother, Eugene of Willcox, Ariz.; children, Trisha Dianne of Fort Worth, Ed Stemple and wife, Jan, of Redmond, Wash., Joanne Cuadra and husband, Gabe, of Friendswood, Donny Stemple and wife, Ann, of Benbrook, and Linda Carroll and husband, Craig, of Liberty Hill; and grandchildren, Luke and Matthew Stemple, Gabriel and Ben Cuadra, Sarah, Christine and Zachary Stemple, and Ashlyn, Bryson and Dawson Carroll.

# Ad rates to change February 2013

In an effort to keep the Mistletoe Express newsletter coming to Mistletoe Heights residents free of charge, our advertising rates will increase beginning February 2013. The circulation of the Mistletoe Express is about 500, but the readership goes much further. And your ad is part of the newsletter that is emailed to resident each month and put on our website, [www.mistletoeheights.org](http://www.mistletoeheights.org).

The new rates are as follows:

- Business card (1/8 page) \$25
- Quarter page \$50
- Half page \$100
- Full page \$200

The Mistletoe Express runs monthly 10 times each year, with combined December-January and June-July issues.

Also, we have a new email address to send submissions, inquiries and advertisements to the newsletter: [mistletoeheights@gmail.com](mailto:mistletoeheights@gmail.com).

## PARK PLACE PHARMACY

Business Hours:

Monday - Friday

9:00am to 6:00pm

Closed Weekends  
& Holidays

Craig Nicholson, RPh

Monique Nicholson, RPh

Your Neighborhood Pharmacy

Phone: 817-924-9292

Fax: 817-924-9264

1601 Park Place Ave, Suite B  
Fort Worth, TX 76110-1303

## DOUBLEXPOSURE

Junior League of Fort Worth

Resale Store

Men's, Women's, Children Clothing  
& Housewares

Shop for quality resale merchandise  
right in your own neighborhood!

**\$5 OFF**

1714 8th Avenue at West Allen

817.924.8038



THE JUNIOR LEAGUE OF  
FORT WORTH, INC.®

Women building better communities

**New Winter Hours:**

Monday - Saturday

10 a.m. - 5 p.m.



**MONKEY  
MOUTHS**

pediatric speech therapy



1809 Precinct Line Rd.  
Hurst, TX 76054



3051 Churchill Dr. Ste 120  
Flower Mound, TX 75022



5701 Edwards Ranch Rd. Ste B  
Fort Worth, TX 76107

To schedule: 817-479-7019  
[monkeymouths.com](http://monkeymouths.com)

# New neighbors: The McNallies

Each tree-lined street in Mistletoe Heights showcases such uniqueness and beauty in the styles of our homes. How wonderful it is that those who dwell inside are equally as unique and wonderful! As a community, we continue to attract fabulous new neighbors and we welcome each and every one!

This summer we welcomed (a little tardy) the McNallie family on Mistletoe Blvd. Kate, Sean, Lola (age 8) and Sam (age 4) moved from Austin in 2011. They chose Mistletoe Heights because of its close-knit neighborhood feel, it's beautiful tree-lined streets, it's great central location, and have especially enjoyed getting involved at Lily B. Clayton.

Everyone in the neighborhood is encouraged to be our eyes and ears, letting us know when there are new folks down the street. Please email either Alex Rodman (alrodman@yahoo.com) or Beth Krugler (beth@bethkrugler.com) and they'll make sure a welcome basket is delivered!

While we recognize we haven't always know who was new and who was not, at this point, we're suggesting you let us know of folks who moved into the neighborhood no longer ago than November 2011. And sorry to those of you who we may have inadvertently missed - but please know we're absolutely happy you're here as well - welcome!

## Do you love landscapes?

Are you an admirer of abundant gardens?

We need volunteers to pick the Yard of the Month. You would choose a yard and talk with the owner about what they plant and if they have any great tips for the rest of us!

Please contact Anna Fuller, annahfuller@hotmail.com.

## SAVINGS AND SERVICE

Home · Auto · Commercial Insurance



Dan Kilkenny, a neighborhood resident and Independent Insurance Agent, compares multiple providers to find the best possible policies for your budget and coverage needs.

- Neighborhood residents have saved an average of \$1200/yr.
- Annual review protects you against rate hikes and ensures you have the best coverage and provider.

Call for a free, no-obligation quote.



Dan Kilkenny  
cdk agency, llc  
817-751-8290  
dan@cdkinsurance.com



BOTANICAL RESEARCH  
INSTITUTE OF TEXAS

Plant to planet.™



You say tomato.

We say *Solanum lycopersicum*.

Keep BRIT® fruitful!

Become a BRIT member and help our mission grow as we promote sustainability and environmental stewardship. As a recognized leader in botanical and environmental education, we offer all sorts of fun, hands-on learning opportunities for the whole family. Programs range from the use of medicinal plants to growing the perfect tomato. Put our knowledge to work in your garden with classes designed to develop your green thumb.

The benefits of a BRIT membership come in all varieties.

Join today at [www.brit.org/membership](http://www.brit.org/membership)

Follow us @BRIT\_org Facebook.com/BRITorg

"My previous bank  
used to treat me  
like a number...  
Meridian Bank Texas  
treats me like  
family"

ONE Banking  
RELATIONSHIP  
at a Time

Discover a different banking experience.

[www.mbtx.com](http://www.mbtx.com)



**Meridian Bank Texas** Member FDIC  
100 Lexington St., Ste. 100 | Fort Worth 76102  
817.334.4600 | [www.mbtx.com](http://www.mbtx.com)



## 7TH STREET BRIDGE TIMELINE



urbanYOGA

YOGA

NIA

BARRE

urbanYOGAfw.com

1706 8th avenue, fort worth

817-908-flow

urbanYOGA

## Engel Cleaning Services

Windows, Made-Readies, Move-Outs

Francis Ortiz, owner

**817-841-4519**

Prices \$5-\$15/windows

Refs, clean gutters

1017 East Butler, Fort Worth, TX 76110

# Nobody Sells More Real Estate than RE/MAX



RE/MAX agents lead the industry in real estate sales experience.

And collectively, they're the most powerful real estate sales force in the world.

That's good news, whether you're looking to sell, or looking to buy.

RE/MAX agents know their communities. And they care enough to get to know you, too.

In today's economic climate, you need service you can count on. You need RE/MAX.

Call us today.

Where Do You Want to Be?<sup>SM</sup>



RE/MAX Trinity  
Amaya Realty Group  
Tracey, Sophie & Cassy

817-737-1983  
team@amayarealtygroup.com  
www.amayarealtygroup.com

**Amaya**  
expert service  
with integrity  
**Realty Group**

## BY THE NUMBERS

# Road diet response summary

431 Emails collected for future contact  
289 Number of comments received  
168 (39%) Number in support  
142 (33%) Number with no comment  
121 (28%) Number in opposition  
6 Age of the youngest comment

### For Those in Opposition to Road Diet CONGESTION / OPERATIONS (x31)

The perspective that "it barely works now with two lanes, how can it work better with only one lane?" is a reflection of the Rosedale intersection and not the ability of FPB to carry traffic. With the road diet, modifications will be made at the intersection as well to improve traffic flow. As a result, the road diet is still calculated to address current and anticipated vehicular needs.

### FUNCTION OF ROAD (x23)

While it is true that this road serves more than just these neighborhoods and FPB is classified as a Minor Arterial, changing the number of lanes and the cross section does not alter the role it plays in the transportation network. What it does change is the speed at which this connection is made.

### ALTERNATIVES TO ROAD DIET (x17)

At this time, funds are not available to consider additional traffic signals along FPB. However, TPW will work closely with the police

to provide more focused enforcement after the modification. The addition of turn lanes throughout will also address many of the turning concerns raised.

### PROCESS / REPRESENTATION (x15)

Because neither neighborhood has a mandatory HOA, the dissemination of information has always been a challenge. However, every effort has been made to get information out through newsletters and public meetings. In fact, the September public meeting was one of the best attend neighborhood meetings in memory. The information and feedback gathered at that meeting has been combined with the over 400 emails received (all from different residents) to determine a course of action. At this point, I can only assure you that your voice has been heard and considered in this process.

### COST / PRIORITIES / GOALS (x15)

There will always be various priorities competing for scarce dollars. As a result, the need that can be afforded is what is pursued instead of the needs that can't be afforded. In this case, FPB fall into the "this is what we can afford" category. This is also considered effective at meeting both the goals of the community as well as the needs of the traveling public.

### BIKES (x15)

As the city continues to pursue providing a multimodal transportation system, there will inevitably be installations that "connect to nowhere". This is not a reason to not pursue a bicycle system. Also, the presence of a bike lane provides additional distance between traffic and pedestrians. These bike lanes are not intended for bike riders of all ages just like I shouldn't allow my 16 yr old driver attempt I35W driving. It is imperative that all parents make sound judgments about the abilities of their children and where they can and should ride their bikes.

### For those in Support of the Road Diet SPEED OF VEHICLES (x36)

One of the most common outcomes of a road diet is reduced speeds. There is no reason to expect differently here.

### PEDESTRIAN TRAVEL (x29)

Pedestrian travel along FPB is expected to be improved as vehicular traffic will be "pushed" further away from pedestrians by the placement of a bike lane.

### BIKE SYSTEM (x26)

Agreed. Efforts need to be sustained to create a robust multi-modal system.

### SAFETY (General x21)

TPW will continue to monitor the area and perspectives from residents are always encouraged.



Associates  
of Internal  
Medicine

AIM for your health

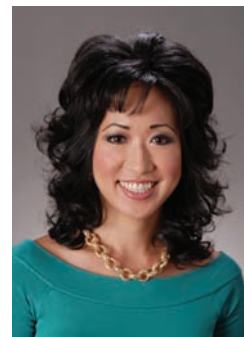


Pavani Bellary, DO; Morvarid Rezaie, DO;  
Niraj Mehta, DO; Aasia Janjua, MD;  
Stephanie Hiraki, DO

Our physicians want to take care of all your **primary care** needs. Since continuity of care is ideal - our doctors are available **for you** at most major downtown Fort Worth hospitals, rehabilitation facilities and a SNF/nursing home.

### AIM Welcomes Dr. Stephanie Hiraki

Dr. Hiraki graduated medical school from the University of North Texas Health Science Center. She completed her Internal Medicine residency at Plaza Medical Center of Fort Worth. There she received the honor of being chosen as Intern of the Year, Resident of the Year, and Chief Resident. Dr. Hiraki is a member of the Texas Medical Association and the American College of Physicians. During her free time she enjoys gardening, sports, and spending time with family and friends. She looks forward to working with patients to help them obtain their optimal health and is currently **accepting new patients**.



Stephanie Hiraki, DO

"My goal is to treat each of my patients with warmth and compassion while helping to increase their knowledge and promote a healthy lifestyle."  
-Dr. Stephanie Hiraki

2260 College Avenue, Fort Worth, TX 76110

**TEL** 817-870-DOCS (3627)

**FAX** 817-870-3636

[www.associatesofinternalmedicine.com](http://www.associatesofinternalmedicine.com)



# Free neighborhood classified ads

RESUME, COVER LETTER AND APPLICATION ESSAY WRITING.... Need a resume, or just need to update what you have? Call or email Mistletoe neighbor Alexandra "Alex" Rodman who specializes in resume design; cover letter and application essay writing; and interview preparation. For a minimal cost, you'll look like a million bucks on paper! Contact Alex at 773-726-1488 or alrodman@yahoo.com  
\*\*\*\*\*

TUTOR, K-3rd grade. Caring, encouraging, experienced (12 years) certified elementary school teacher is offering tutoring this summer. Contact Kathy Jo Rogers at 817.688.0905 or kathyjorogers@sbcglobal.net.  
\*\*\*\*\*

EXPERIENCED BABYSITTER/ NANNY/ CHILDCARE PROFESSIONAL. My name is Britney Owens and I live in the Mistletoe Heights Neighborhood. I have 8 years of experience in high end quality childcare and I am seeking to help you with your family's needs for a babysitter! I bring toys and it allows

me to be very hands on and interactive when doing developmentally appropriate activities with children. I've had a variety of experiences. Currently I am working for Cooks Kids Place Childcare and a Nanny Agency where I have assisted Pro-Athletes Families. I would love to help you as well. Please call me at 817-253-4734 or email britneyn.owens@yahoo.com to let me know if I can help you!  
\*\*\*\*\*

HARPIST: Sally Sledge ministers on the harp as a worshiper, psalmist and vocalist. She has recorded two CDs: "Return to Your Rest" and "Cherished Times". She is available to play for home groups, church events, Bible studies, weddings, funerals, dinner parties or any special occasion. For more information and song samples, you may access her web site at www.sallysledge.com.  
\*\*\*\*\*

MISTLETOE HEIGHTS PET SITTERS is now booking for your vacation, or any other time. References available on request. www.mistletoeheightspetsitters.com or 817-247-2870



## Shady Oak Learning

### Does your child struggle to learn?

Sometimes it takes more than tutoring; it takes remediation. Remediation is training underlying cognitive skills such as attention, memory, problem solving, and comprehension.

Our Brain Workout® program helps children develop thinking skills necessary for academic success.

Contact: Pam Jarvis  
817-709-7227

shadyoaklearning@gmail.com  
www.shadyoaklearning.com

## Forest Park Tower

### Sales Reservations Now Accepted

*Hurry, these condos are going fast! This 12 story architectural jewel is comprised of only 36 condos with 3 condos per floor. The first closings are projected for Spring 2013.*



Situated high atop a bluff overlooking the Trinity River, the iconic Forest Park Tower was completed in 1930 and is an official Fort Worth Cultural Landmark.

Both extraordinary and unique, Forest Park Tower is adjacent to the historic Berkeley Place, Fairmount, Mistletoe and Ryan Place neighborhoods, the Medical & Cultural Districts, the Fort Worth Zoo, TCU, and Downtown Fort Worth.

Each condo will feature all modern amenities including new energy efficient windows, stainless appliances, granite countertops, refurbished vintage hardwoods, separate HVAC, individual hot water heaters, washer/dryers, one year homeowners warranty . . . and much more.

- 1 bedroom / 1 bathroom from \$151,000
- 2 bedroom / 1 bathroom from \$191,000
- 3 bedroom / 2 bathroom from \$256,000

Model open Mon. thru Fri. 10 - 5, Weekends by appointment

2306 Park Place Avenue  
Fort Worth, Texas 76110  
www.ForestParkTower.com

office 817-926-2306  
fax 817-926-2880  
ForestPark@fairfaxcorp.com



### It's Back to School & Back to Business!

*Check out all the great happenings at Shaw's and.....we are just around the corner!*

**1/2 price burgers**  
every Tuesday & Thursday, 4 pm to 7 pm

**Paw's at Shaw's on Wednesday nights on the patio,**  
Mutt Mingling, Yappy Hour & special Hot Dog Menu  
for Paw's Pals only available Wednesdays!

**Happy Hour weeknights**  
4 pm to 7 pm.....Best one on the block!  
Live Music Friday & Saturday Nights  
\$5 margarita's ALL DAY Saturday

**Take Out \* Catering**  
Like us on Facebook \* Follow us on Twitter

Beginning September 4th,  
Shaw's will be open EVERY Sunday until 9 pm!

www.shawspatio.com

1051 W. Magnolia Ave. 817-926-2116

# Free neighborhood classified ads

PIANO LESSONS for beginners and intermediates. Mary Smith, 2300 W. Magnolia Ave. 817-927-8876.

MEMORY QUILTS: Do you have more t-shirts than you can wear? I have a solution! Turn them into memory quilts. Call Jill at 817-217-4497 or visit [www.sew-what-quilts.com](http://www.sew-what-quilts.com)

HOUSESITTER AVAILABLE: Responsible adult will stay at your house, take care of pets, plants and general house duties. "No worries, she's great!" - recommended by MH neighbor Cynthia Wahl. For more information, call Ingrid Schafenburg, 917-344-0334.

LEARN TO SWIM LESSONS - With emphasis on Olympic strokes. Contact: Richard Sybesma, Head Swim Coach, TCU Box 297600, Fort Worth TX 76129; 817-257-5646 or 817-257-7963

COMPLETE PROPERTY RENOVATION: Demolition, clean-up, specializing in historic home renovations, painting, wallpaper. Contact Jeff Cunningham at 817-988-7113.

ESTATE SALE SERVICES - Estate Sales & Appraisals  
Experienced, reliable estate sales in and out of Mistletoe Heights since 1992. Certified Appraiser, International Society of Appraisers. Appraisals for insurance, estate evaluations, donations; whatever your needs. Contact: Terri Ellis, Mistletoe Estate Sales, 817-926-9424 or email [tquilts@mac.com](mailto:tquilts@mac.com)

VINTAGE SALES  
Estate sales and appraisals in Fort Worth since 1992. Call Anne Bourland for information. 817-924-5959

GOING OUT OF TOWN? Call Riley Gensheimer. Neighborhood teenager available for pet sitting and plant watering while you are away. \$10-\$15 a day. Call Riley Gensheimer at 817-991-8214.

## Dr. Kory S. Cummings

### THERAPEUTIC OPTOMETRIST

1101 West Rosedale  
(S.E. corner Rosedale & Henderson)

**817-294-4834**

[www.weloveyoureyes.com](http://www.weloveyoureyes.com)



REPUBLIC TITLE

**Jeff Davis**  
Chairman/Fort Worth Division

REPUBLIC TITLE OF FORT WORTH

420 Throckmorton  
Suite 640  
Fort Worth, Texas 76102  
Main (817) 877-1481  
Metro (972) 445-5044  
Direct (817) 806-1301  
Fax (817) 810-1051  
Email: [jeffdavis@republictitle.com](mailto:jeffdavis@republictitle.com)

A DIVISION OF  
REPUBLIC TITLE OF TEXAS, INC.



## A Simple Pleasure in Park Place Village

1633 Park Place

817-923-2282

Open 7a-9p • Mon-Sat

## PLEASE DON'T FENCE ME IN

In case you didn't know, I'm more than just a Mistletoe Heights' area Realtor—I represent buyers and sellers all over Fort Worth, Tarrant County and beyond.



*Call me with all  
your real estate  
needs & questions.*

*Gaye Reed*



817-688-1952  
[gaye.reed@cbfw.com](mailto:gaye.reed@cbfw.com)





# Banking Made Easy

Corner of Hemphill and Magnolia  
817-927-7730

## SOUTHSIDE BANK

Member FDIC

www.southside.com



Residential Roofing Specialists

No-Charge Estimates • Reroof • Repairs • Inspections

**817-738-1756**

Jeri Jo Blackmon  
Professional Tax Services

**817-923-4393**

Email: JeriJo@charter.net  
Enrolled Agent licensed by the IRS

1408 Mistletoe Drive  
Fort Worth, TX 76110

Cell: 817-925-7833  
Fax: 817-924-7733

**Ben Taylor  
Optical**

*Style • Service • Savings*

1101 West Rosedale

**817-870-2061**

www.BenTaylorOptical.com



LINDBERG®

## Mistletoe Heights Association Income & Expenses January through October 2012

**Jan - Oct 12**

### Income

Advertising Income - Newsletter	6,351.00
Christmas Cards - 2011	45.00
Dues Donations	4,566.00
Interest Income	1.01

### Total Income

**10,963.01**

### Expense

Bank Charges	0.51
Easter Egg Hunt	222.77
Flag Program - Triangle	120.00
Maintenance - Newby, Berm, etc.	1,607.14
MHA Entrance	193.45
MHA Meeting Facility Rental	280.00
MHA Xmas Party - 2011	167.78
Neighborhood Activities	158.39
Newsletter Expenses	4,593.16
Traffic Committee Expenses	961.79
Water Expense - Newby	1,597.34
Welcome Baskets	279.50

### Total Expense

**10,181.83**

### Net Income

**781.18**

**Bank Balance \$19,823.16**

### FOOD DRIVE

## Thank you for your help

The Haynes Family (Lysta, Barry and Alex) thank all you generous, kind, and thoughtful neighbors who responded to our request for non perishable food items for the Food Drive through Calvary Christian Academy. Alex did collect over 200 food items from our neighborhood. The school total was over 53,000 food items collected. I apologize for not being able to collect west of Forest Park due to time and darkness constraints with the move back to Central Standard Time. Many Fort Worth families will benefit from your generosity. Blessings and Happy Thanksgiving to all.

— Lysta, Barry, and Alex Haynes

# Helpful phone numbers, e-mails, addresses and websites

	Phone (817)
City Code violations	392-1234
City of Fort Worth	392-2255
www.fortworthtexas.gov	
Police - non-emergency	335-4222
Garage sale permits	392-7851
www.fortworthtexas.gov	
Graffiti abatement	212-2700
Lily B. Clayton Elementary	922-6660
http://schools.fwisd.org/clayton/	
Paschal High School	814-5000
www.paschalhs.org	
Historical Preservation	
Liz Casso	392-8037
liz.casso@fortworthtexas.gov	
Southside Preservation Hall	926-2800
Hallyes@earthlink.net	
www.southsidepreservation.com	
The T/Longhorn Trolley	215-8600
www.the-t.com	
Trinity Railway Express	215-8600
www.trinityrailwayexpress.org	
City Council District 9	
Joel Burns	392-8809
district9@fortworthtexas.gov	

## MHA officers

President	
Kyle Jensen	940-367-1428
jensendenton@me.com	
Vice-President	
Ben Belsher	817-919-8375
benjamin.belsher@radioshack.com	
Secretary	
Rosaline Eastepp	817-207-9750
rosaline@eastepp.com	
Treasurer	
Jeri Jo Blackmon	817-923-4393
jerijo@charter.net	
Newsletter Editor	
Stefanie Ball Piwetz	817-291-1909
stefanieball@yahoo.com	

## Volunteers

Historic Preservation Committee	
Kathy McReynolds	817-926-7955
Street Rep Captains	
Melissa Kohout (East side)	817-313-1419
Gaye Reed (West side)	817-921-0009
Welcome Baskets	
Beth Krugler	817-713-0993
Alexandra "Alex" Rodman	773-726-1488
Advertising Manager	
Kelly Reece	817-773-1637
Newby Park	
Marjorie Day	817-914-8057
E-Mail Moderator	
Richard Yantis	817-924-2857
Webmaster	
Scott Ewing	214-403-7762 cell

## Street reps (listed by blocks)

East of Forest Park	Phone (817)
2200 W. Rosedale South	
Dottie Guffey	921-6288
2200 Irwin	
Gary Willis	924-4000
2100/2200 Mistletoe Blvd.	
Melissa Kahout	313-1419
2100/2200 West Magnolia	
Mecca Givens	927-2244
2200 Harrison	
Aaron Torkelson	907-5533
2100 Harrison Ave.	
Vacancy	
2100 Mistletoe Ave.	
Pat Hale	924-5263
2200 Mistletoe Ave.	
Richard & Christi Yantis	924-2857
2100/2200 Edwin	
Katrina Pittman	921-2221
2100 Weatherbee	
Judy Gude	926-8843
2200 Weatherbee	
Susan Harwell	923-8806
2100 Morphy	
Vacancy	
Forest Park Blvd.	
Steve McReynolds	926-7955

## West of Forest Park

2300 W. Rosedale South	
Kimberly Helixon	927-4641
2300 Irwin	
Sue Duvall	926-8714
2300/2400 Mistletoe Blvd.	
Lisa Stewart	924-9666
2300 West Magnolia	
Susan Pressley	923-6061
2300/2400 Harrison	
Robert DeVargas	923-9393
2300 Mistletoe Ave.	
Jason Fuller family	xxx-xxxx
2300 Edwin	
Grant Pannell	924-0051
1100 Clara	
Marc & KathyJo Rogers	923-3304
1200 Clara	
Betty Arvin	924-7088
1100 Buck	
Kate Herring	923-3843
1200/1300 Buck	
Trisha Dianne Stemple	926-6546
Mistletoe Drive	
Meralen & Gerry Tyson	926-5909
2300 Mistletoe Drive	
Chris Fershtand	923-8422
Carol Benson	921-4000

## Neighborhood police officers

Sidney Keith (West)	944-1038 cell
David Cloninger (East)	992-0181 cell

## Editorial policy

Articles and letters to the editor are welcomed. To be published as written, letters must be addressed to the editor, signed and include a phone number.

Anonymous letters will not be published. Articles may be submitted for publication, signed or unsigned, subject to approval and editing.

Contact info helps, if we have questions for you.

Letters to the editor are limited to a half-page (approximately 350 words). Please send e-mail to mistletoeheights@gmail.com.

## Advertising information

To place an advertisement or for actual mechanical sizes, please e-mail Kelley Reece at

kelley@metro-mailer.com

Rates:

	as of
	Feb. 2013
Business-card size	\$18 \$25
1/4 page	\$36 \$50
1/3 page	\$54 discontinued
Half page	\$61 \$100
Full Page	\$120 \$200
Pre-printed inserts	\$60 \$100
8 1/2 x 11	

Deadline for ads, stories and letters is the 15th of each month

## MHA yearly memberships

Voluntary dues are \$15, \$25, \$50 or what you can afford. Your dues help pay for this newsletter, the Mistletoe Heights phone directory and many neighborhood functions. Please make your check payable to Mistletoe Heights Association. Mail to: Jeri Jo Blackmon, 1408 Mistletoe Drive.

## Free classified ads

As a MH resident, you get a free classified ad. Please submit by the 15th of the month. Notify the editor at 817-291-1909 or email: mistletoeheights@gmail.com.