



Mistletoe Express

www.mistletoeheights.com

March 2012

COMMUTER RAIL STOP

The good, bad and the ugly
of the train **PAGE 6-8**

FOREST PARK ROAD DIET

Restriping Forest Park
to a 2-lane boulevard **PAGE 9**

FROM THE TRAFFIC COMMITTEE

Urgent neighborhood business: where to put a train stop and considerations for putting Forest Park on a diet

By Scott Nishimura

Greetings from your Mistletoe Heights Traffic Committee chairman. I thought I'd introduce myself, as you're going to hear a lot from our committee over the next few months.

The T is evaluating a site at the southeast corner of Mistletoe Boulevard and Fort Worth and Western tracks for the proposed Medical Center commuter rail stop, part of the proposed \$700 million TEX Rail project. The T also is re-evaluating a site north of Rosesale and east of the railroad tracks.

Our Traffic Committee will be evaluating the sites, holding public hearings March 20 and April 10 to present what we've learned, and making a recommendation to the Mistletoe Heights Neighborhood Association. The committee will make its recommendation April 10, and we'll present it to the Neighborhood Association for a vote during a Special Meeting April 24.

Debate on this issue has been understandably hot and divided.

Members of the Traffic steering committee will run a process that distributes information as quickly and completely as possible, and that invites participation from all residents. I have not taken a stance on this issue, because

I don't have one yet. My position is one of curiosity, as I hope is yours.

I certainly understand the impact traffic has had on our neighborhood, and I share everyone's frustration.

My wife Julie and I bought our home in 1994, mostly because it has three bathrooms. We live on Mistletoe Boulevard two houses east of Forest Park, the neighborhood's most heavily trafficked spot short of the middle of Forest Park. Westbound motorists back up nearly to Jerome at evening rush hour, while Julie and I sip wine on our porch and ridicule them for not living closer to work. I sometimes park my cars in the street, three feet from the curb and right up to Forest Park, just to slow traffic. I push my yard cart into the middle of Mistletoe while I mow the lawn; cars sometimes run it down. My daughter learned how to ride her bike in our backyard, not out in the street. And remember those "Slow Down!" kitty crossing signs? I had the biggest one, the one with blood in its eyes, until someone stole it.

So how come I'm not howling about traffic and recommending hipshot solutions? In my real job, working for the local newspaper, I get paid to collect and sell information. Right now, the committee doesn't have enough info.

I also acknowledge that I live in the middle of a fast-growing urban area. Infill problems, what we have all around us, aren't pretty, and they don't have simple solutions.

To me, a large part of assessing the value of this train amounts to a giant math test. Will it bring traffic into our neighborhood? Surely. Will it take cars off the street? Yes. What's the net impact? These are questions we're asking.

We'll explore overall traffic stats and patterns; review the history of the neighborhood's debate on this topic; examine ridership projections and demographics; let you know what a train platform would look, sound and feel like; and look at development that could be spurred by a station. Finally, we'll study ways to eliminate or mitigate the traffic impact.

I urge all Mistletoe Heights to participate in what's sure to be a lively debate over the next few months. Let's just please try to respect each other's ideas and time, and keep it civil.

Scott Nishimura
Mistletoe Heights Traffic Committee chairman
2239 Mistletoe Blvd.
817-913-8671
julieandscott91@att.net

LETTER TO THE EDITOR, PAGE 9; MEETING MINUTES, PAGE 12

**Public hearings at St. Stephen Church, 2700 McPherson Ave. 76109, 6 p.m. March 20 and April 10
Special Mistletoe Heights meeting (to vote on train) April 24**

Mistletoe Heights Neighborhood Association meeting, Lily B. Clayton, 7 p.m. March 13

**Inside
This Issue**

Page 2 - Yard of the month
Page 3 - Mistletoe Heights events
Page 4 - New on the Block

Page 5 - Gardening column
Page 6-8 - The train stop
Page 9 - Forest Park Diet, Letter to

the editor,
Page 10-11 - Classified ads
Page 12 - MHA meeting minutes

Page 14 - Cowtown Cleanup
Page 15 - Message from President

Mistletoe

progressive family Therapy Group & art Gallery

2120 Mistletoe Blvd, suite 1, FW TX 76110

therapy is normal.
we all need it.
it's a gym membership
for our mind,
for our feelings,
for our perspectives.
it serves
to fuel, clarify, and drive.
we are all doing just fine.
but we owe it to ourselves
to maintain,
to grow our minds.

Mistletoegroup.com
therapy is normal

YARD OF THE MONTH | MARCH 2012

2345 Mistletoe Blvd.



Congratulations to Leslie Houston, recipient of the Mistletoe Heights Association Yard of the Month for March.

Located at 2345 Mistletoe Boulevard, Leslie's Victorian style home was built in 1925, making it one of the older homes in Mistletoe Heights. The graceful front porch and swing calls you to relax and survey the well-kept yard.

The well-established front flowerbeds are planted in sweeps of color. The stars of Leslie's garden are Encore azaleas giving the beds evergreen structure throughout the year. The azaleas are planted in sections of white, pink, and salmon varieties, along with bridal wreath spirea and crepe myrtles continuing the color scheme. Various spring bulbs and summer daylilies add interest. Each fall Leslie fills in with pansies and in the spring she adds to the color with annuals such as impatiens, vincas, and petunias.

While Leslie enjoys tending the front yard, her love of gardening is most evident in her backyard vegetable garden, filled with leafy veggies, peas, radishes, beets, and even asparagus! Blackberry and raspberry bushes grow along the fence. As the weather warms, tomatoes and a few other crops will be added.

Mistletoe Heights Association expresses appreciation to Leslie for helping beautify our neighborhood. We look forward to the display of azalea blooms in her garden as spring arrives. A special thanks to Calloway's Nursery for support of our neighborhood through their generous donation of a \$25 gift certificate to each Yard- of-the-Month recipient.

Leslie's Gardening Tips:

- (1) Before rushing out to buy plants, pay close attention to the patterns of sun and shade in your garden throughout the day and at various seasons. What you think will work in spring may need to be moved by the time summer arrives in full force.
- (2) Be generous when filling in with annuals so as to provide enough plants for visual impact.

Jeri Jo Blackmon
Professional Tax and Accounting Services

817-923-4393

Email: JeriJo@Charter.net

Enrolled Agent licensed by the IRS

1408 Mistletoe Drive
Fort Worth, TX 76110

Cell: 817-925-7833
Fax: 817-924-7733



Mistletoe Heights Neighborhood Events

■ Neighborhood Easter Egg Hunt

April 7, 2012.10 a.m. at Newby Park. Hosted by **Susan Pressley**

■ Spring covered dish dinner

at Lily B. Clayton Cafeteria, Tuesday, April 17, 6:45 p.m. Everyone bring a salad, appetizer, bread, fried chicken, dessert! Yum! They have day-care in the cafeteria until 6:30, so they don't want us coming before 6:45, but we should be set up quickly.

Hosts: Austin and Maya Jourdes. Austin is the manager at Central Market. Central Market will be providing some of the treats.

■ Neighborhood Easter Egg Hunt

April 7, 2012.10 a.m. at Newby Park
Hosted by **Susan Pressley**

■ Neighborhood Garage Sale

April 21 and 22

■ Fourth of July Parade and Ice Cream Social, Triangle Park, 7 pm

We need a host for this event... maybe YOU?

Host would be responsible for bringing the popsicles and handing them out. MHA would reimburse expenses

■ Fall Covered Dish Dinner

Lily B. Clayton cafeteria, date TBA
We need a host for this event... maybe YOU?

Host would be responsible for bringing dishes, utensils and tea/ice and water. MHA would reimburse expenses.

Host an event - here's how

Hosting a neighborhood event is a great way to get involved and meet your neighbors, too. Sometimes neighbors team up and work together on these events. MHA will reimburse you for any of the supplies needed, such as dishes, utensils, drinks, etc.

These events help make Mistletoe Heights the special neighborhood it is. If you are interested in hosting one of these events, please contact Rose Lynn Scott, 817-807-6748.

■ **Bow-tying Party for our Street Light Decorations**, November 18th, 2012, 3 p.m. 2237 Irwin - Hosted by **Susan and Gary Willis**

■ **Mistletoe Heights Neighborhood Holiday Party**, December 2, 2012
We need a host for this event...maybe YOU?

Host would open their home to the neighborhood and provide dishes, utensils and non-alcoholic drinks. MHA would reimburse expenses.



Check out our updated website:
www.mistletoeheights.com

Get on the Mistletoe Heights email list

To subscribe to the Mistletoe Heights Residents mailing list, go to www.mistletoeheights.com, click on "Email List" and look for the section "Subscribing to Residents". Enter your email address and name and click "Subscribe". Be aware that you may need to add residents-bounces@mistletoeheights.com to your address book so the incoming emails are not treated as spam. We're still missing lots of neighbors on the email list. If you have any questions or concerns about the email list, contact moderator@mistletoeheights.com.



BOTANICAL RESEARCH
INSTITUTE OF TEXAS

Plant to planet.™



Come explore with us!

Summer camp at BRIT® is full of outdoor fun and learning.

Dig in, get dirty, and experience hands-on fun with BRIT scientists and educators. Campers spend the week working alongside scientists to investigate habitats, have fun with nature games, and so much more!

Little B.I.T. - Botanist in Training
(students entering grades K - 2)

Habitat, Habitat
(students entering grades 3 - 5)

Sustainable by Design
(students entering grades 6 - 8)

Visit us at BRIT.org for a program to fit your blossoming scientist! Registration begins in March.

ph 817.332.4441
1700 University Drive
Follow us @BRIT_org

BRIT.org
Fort Worth, TX 76107-3400
Facebook.com/BRITorg

a 501(c)(3) charitable organization



FREE
Wednesdays

That's right
EVERY
WEDNESDAY
in March is free!

Offer valid at participating locations for new customers. Other restrictions may apply.

60 minutes.
Up to 600 calories burned.
Start today.

Broadway Baptist Church
305 W. Broadway, 76104
First Christian Church
612 Throckmorton, 76102
19 classes a week
817-521-7444

jazzviac@att.net
www.facebook.com/fortworthjazzercise

jazzercise
jazzercise.com • (800)FIT-IS-IT

New on the Block!

Every month, we hope to introduce you to one of our new homeowners in Mistletoe Heights. If you have a new neighbor on your street, please email Beth Krugler (beth@bethkrugler.com) and/or Alex Rodman (alrodman@yahoo.com) so that we can give them a proper welcome with our neighborhood gift basket and include them in our monthly highlights!

Welcome to the Guarnieri Family! Born and raised in Fort Worth, Jeff and Ashley Guarnieri recently moved into their new home at 2201 West Magnolia Ave. with their son Reed. Jeff, a graduate of Arlington Heights, and Ashley, a Paschal graduate, love that both sets of parents are still in the area, especially because they are expecting Baby #2 in August!

Jeff and Ashley have always loved this neighborhood and have been looking for a home in our community for the last few years. So, when the opportunity came up to build here, they jumped on it. And, according to Ashley, "We also really wanted our kids to go to Sweet Lilly B!"

We are thrilled to have this wonderful new addition to Mistletoe Heights!



March Meetings, Dates

March 13 Mistletoe Heights Neighborhood Association meeting, 7 p.m., Lily B. Clayton Elementary School, 2000 Park Place

March 12-16 Fort Worth ISD Spring Break

March 17 St. Patrick's Day

March 20 Public hearings at St. Stephen Church, 2700 McPherson Ave. 76109, 6 p.m.



Our new
Mobile location
is now
at your
fingertips

Get access today at mbtx.com



 **Meridian Bank Texas**
100 Lexington St, Ste. 100 | Fort Worth 76102
817.334.4600 | www.mbtx.com

Hunters and Rustlers and Cutters

By Marjorie Day

Many of the superior southern plants Texans planted years ago with abandon are now often impossible to find at the local garden center. Some of our southern heirlooms and hardy natives survive mostly in generational gardens, cemeteries, abandoned homesteads, ranch land, or out in the wild.

Settlers dug up native wild plants to put in their homestead gardens, along with favorite bulbs they lovingly brought from overseas. Often what people consider a native plant is actually an adapted plant introduced by settlers so long ago that people now consider it a native. These adapted plants often naturalize comfortably in the wild but others can become unruly invasives threatening our ecosystems. It's important to use heirlooms that stay in bounds of the garden.

How is that devoted gardeners who know about so many wonderful adapted no maintenance heirloom varieties that stay in bounds have such little interest in their rescue from obscurity? Well we are now in the age of the 'Patented plant' and it is the craziest time yet in the sad story of human domination over plants. Often garden centers and nurseries

just don't sell these heirlooms. Now some very hardy plants are so rare that they cannot be sold in quantity. So we all lose. And that is why we should hunt, rustle, cut and pass-along our gardens.

Rustling is the art of getting your trowel under an heirloom that might otherwise be lost to further propagation.

Plant rustlers, Bulb hunters and Creative cutters should rustle, hunt and cut with integrity. If a bulb is about to be mowed under by a developer's bobcat, it is time to rustle. In an old heirloom clump of bulbs, there are often many dozens of individual bulbs ready to be divided. Getting in there and sharing these hardy bulbs is an act of garden dignity but even standing on a moral high ground does not give a rustler the right to just dig or cut without permission. Most landowner's are happy to share from a site that they pay little attention and often your rustle will give them a new found respect for those hardy survivors who come back year after year with no tending.

There are so many outstanding plants that make it for centuries without watering, fertilizer and pesticides.



Here are just a few of the super survivors:
 Snowflake (Ileucojum aestivum)
 Orange daylily/Ditch Lily (Hemerocallis fulva, Double 'Kwanso')
 White Iris (Iris albicans) Purple Iris (Iris germanica)
 Byzantine gladiolus (Gladiolus byzantinus)
 Red Spider (Lycoris radiata)
 Turk's cap, pictured above (Malvisscus drummondii)
 Purple Heart (Setcreasea pallida)
 Coral Vine (Antigonon leptopus)
 Society garlic (Tulaghia violacea)
 Prickly pear (Opuntia)
 Narcissus (Grand primo, Texas Star and hybrids)
 Oxalis (pink and white)
 Red Yucca (Hesperloe parviflora)
 Oxblood lily (Rhodophiala bifida)

THE BASTION ON HEMPHILL

Catering · Restaurant · Culinary Classes · Private Event Space
 2100 Hemphill (Entrance in back at Hawthorne & Travis)

Catering for private dining, special events & office lunch delivery

(Reservations & minimum order required—All events are BYOB)

March 11th class: Simply Italian I

March 16th class: Simply Italian II

March 24th Crawfish Boil 2PM

March 31st Sat. Brunch 12-4PM

www.bastionrestaurant.com

Chef Chandra Riccetti
817-913-6972

*Help restore Hemphill and
 a Texas Historic Landmark...
 One meal at a time!!*



The good, bad and the ugly of the train

By Scott Nishimura
MH Traffic Committee chairman

The Mistletoe Heights Traffic Committee continues to study prospective sites for the Medical Center T commuter rail stop. The sites in play are a) north of Rosedale Street and east of the Fort Worth & Western Railroad tracks, and b) Mistletoe Boulevard and the tracks at the south-east corner on property owned by Baylor.

MH traffic committee representatives met twice in February with several people from The T, TEX Rail, the city, and Fort Worth South. Some answers to questions neighbors have had:

IS BAYLOR INTERESTED? Baylor, in a February meeting with Councilman Joel Burns and Mike Brennan of Fort Worth South, conveyed that it remains intrigued, is very interested in being a good neighbor to Mistletoe Heights, and wants to hear what we have to say. Baylor has no concrete plans for the seven-acre site. But it views future development there as transitional between the hospital and neighborhood, and foresees medium-density mixed-use – not the maximum allowed under its zoning, which allows up to 10 stories.

MISTLETOE SITE UPDATE: The T and

TEX Rail are developing plans for a proposed rail station that they'll be able to show the Traffic Committee at our March 20 meeting. Details are changing. Preliminarily:

- * There will be dual tracks to ensure north and south bound trains can pass each other, including the Fort Worth & Western trains.

- * The dual tracks may begin north of Rosedale and extend as far south as 8th Avenue.

- * The new track would be built on the east side of the existing track.

- * There would be dual platforms on the east and west sides of the tracks, with the west platform extending 10 feet from the rail toward the creek.

- * There would be a level pedestrian crossing connecting the east and west platforms.

- * The 450-foot-long platforms would extend from Mistletoe Boulevard to be perpendicular to the midpoint between Harrison and Morphy.

- * There would be several access points – stairs and ramps – to parking and bus lanes on the Baylor property to the east.

ROSEDALE SITE: This site is EAST of the RR tracks and north of Compass Bank off of 12th Avenue. The T was originally trying to get a site WEST of Rosedale next to the Midtown

project, but it could not secure that piece. The T and TEX Rail people say the east-of-RR site is not optimal, and would likely cost more to develop than the Mistletoe site, because 1) the track is significantly below the plateau; 2) riders would have to climb up stairs or ramps to get to parking and buses; 3) bus access would be on 12th and not in the parking lot; 4) there's no link to Midtown, 5) Midtown didn't develop as originally thought and isn't as interesting as it once was for a train station location; and 6) there isn't much opportunity to develop partners for transit-related development, which helps defray costs, manage growth and density and its impacts, and make the project more politically attractive. A hotel is interested in the site just north of Rosedale and west of Compass Bank and in partnering with The T on parking, Mike Brennan of Fort Worth South says.

ROSEDALE vs. MISTLETOE: The T and TEX Rail people say topography isn't as much of an issue at the Mistletoe site, buses can get close to the platform, the cost would be lower, and the opportunity to partner with Baylor is strong.

NEWBY SITE: Mistletoe Boulevard, EAST of the RR tracks, across from Newby Park. Based on Traffic steering committee senti-

Mediterranean flavors infused with Southern Hospitality.



CHADRA
MEZZA & GRILL

Southern Hospitality. Mediterranean Flavor.
1622 Park Place Avenue | www.chadramezza.com
Fort Worth, TX 76110 | 817.924.2372



BEYOND LAVENDER
Relaxing Facials & So
Much More!

New Client Special Offer
Microdermabrasion
& Organic Facial
\$69
(\$190 value)

www.beyondlavender.com
click monthly specials to
purchase special offer

Renew Day Spa
2116 Mistletoe Blvd
Fort Worth, TX 76110
817-683-4138



Train, *From previous page*

ment, we conveyed to the T and TEX Rail that we wanted to draw this site back into the discussion as a potential "compromise." Baylor also owns this site. The T and TEX Rail people are lukewarm to the idea, because of the availability of parking and the curve in the tracks there.

WHAT IS TEXRAIL? It's a line linking southwest Fort Worth to Dallas/Fort Worth Airport, going through downtown, where it would connect to the Trinity Railway Express to Dallas. The several stops include TCU/Berry and the Medical Center.

IS IT FUNDED? The T is applying for 50 percent federal funding of the \$700 million project cost, and that funding is uncertain. The other 50 percent would come from a Grapevine sales tax, Tarrant County bond election, grants, and monies already saved.

TIMEFRAME: May 2016 operation. As part of the application for federal funding, The T needs to hear from the Mistletoe association by April 25.

OUR PROCESS: The MH Traffic Committee is having two more opening hearings, 6 p.m. Tuesday, March 20 and Tuesday, April 10, in the Parish Hall at the St. Stephen Pres-

byterian Church, 2700 McPherson Ave., off of Park Hill. The committee will make a recommendation by vote of whoever is at the April 10. The recommendation will be forwarded to the MH Neighborhood Association for a vote at Special Meeting, 6 p.m. Tuesday April 24 at the St. Stephen Presbyterian Church. You may vote in person at the Special Meeting, or by absentee ballot that we'll distribute closer to the meeting. The MH Neighborhood Association results, including block by block results (not specific addresses), will be forwarded to The T April 25.

PROJECTED RIDERSHIP: Overall TEX Rail ridership projections are for reaching 17,000 riders per day over a number of years on the entire line, which TEX Rail characterizes as conservative estimates. The T's rider model for the Medical Center station estimated 1,100 daily riders, one third originating at the station, and the other two thirds incoming. The T and TEX Rail estimate 85 percent of the riders would be walking to and from the station. Planners say the 1,100 is likely a very conservative number, given the estimated 200,000 DAILY TRIPS into and out of the Near South Side that people make. The T and TEX Rail will run a new ridership model for the Mistletoe site, but their people said the model won't be fine enough to capture a difference in comparative projected ridership between the Rosedale and Mistletoe sites. As far as large employers, Mike Brennan of Fort Worth

South feels the Rosedale station would likely be most attractive to employees of Plaza Medical Center. The T people said it stands to reason the Mistletoe site would be more attractive to Baylor employees than if the station were north of Rosedale.

PARKING: There'd be about 100 spaces at the north-of-Rosedale station, a significantly smaller number than at the other planned TEX Rail stations. The goal for the Mistletoe station would be at least the same.

BUS CIRCULATION: The circulator routes haven't been laid out yet, but T people said they would likely stay EAST of the RR tracks, where the Near South Side employment base is.

TRAIN LENGTH: About 90 feet long per car, based on projected demand. Two or three cars per train.

MISTLETOE NOISE: The early sound reports did not indicate a need for sound walls, The T and TEX Rail people said. But they said sound walls and other mitigators such as landscaping and fencing can be considered. The crossing will be set as a no-horn "quiet zone." MH Traffic Committee representatives told T/TEX Rail people they will need to go above and beyond on the noise mitigation issue.

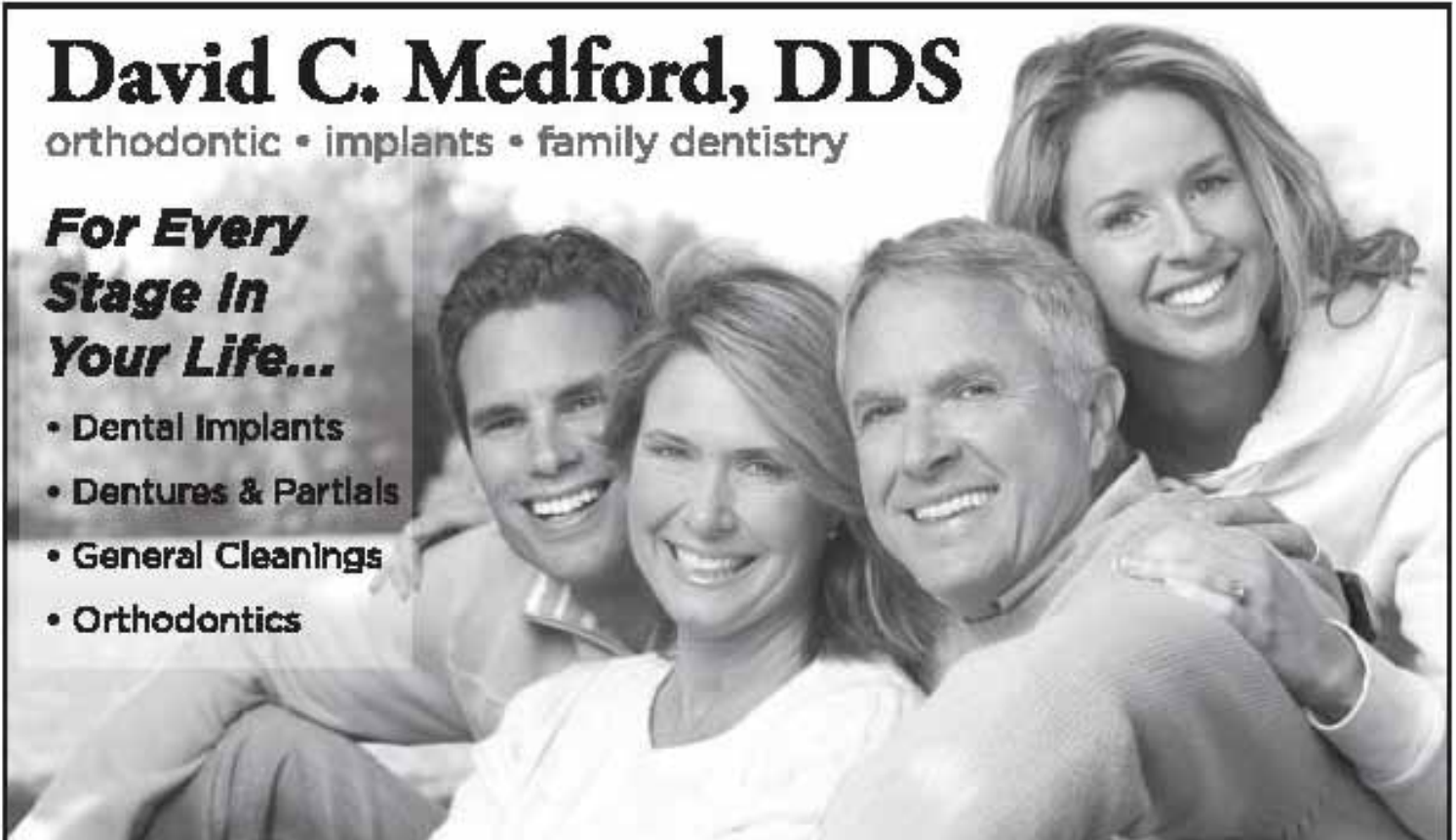
Continued on next page

David C. Medford, DDS

orthodontic • implants • family dentistry

**For Every
Stage In
Your Life...**

- Dental Implants
- Dentures & Partials
- General Cleanings
- Orthodontics



817.923.9877 2517 8th Ave. • Fort Worth • www.drmedford.com

Train, *From previous page*

LIGHTING AND SECURITY: The T people said modern platform lighting is energy-efficient, maintaining optimum lighting during operations, while limiting adverse environmental impact. They also said the platforms would have security cameras.

TRAFFIC MITIGATION. The steering committee has opened discussions with the city and The T about mitigation/elimination as it relates to the Mistletoe site, and the potential to get it funded as part of the train station planning.

* We raised the potential for closing Mistletoe Boulevard off at the RR tracks to all but emergency vehicles, which the two Fire Department operations chiefs we've spoken to say they would NOT oppose. We're also checking with the police and MedStar.

* The city's deputy planning director was at one of our T/TEX Rail meetings, and she indicated planning would resist this type of closure, because of the loss of this access route.

* Understanding that the train station would likely get some Baylor commuters

out of their cars and off of our streets, MH Traffic Committee representatives also raised concerns about the potential for new traffic on our interior streets from people driving to the train station. We also expressed concern about

the potential for commuters parking on Mistletoe Boulevard and Jerome.

* MH Traffic Committee reps erns about discussed ideas for other mitigation on Mistletoe and Jerome, as well as for the potential to get it funded through the train station planning.

PROPERTY VALUES. TEX Rail links on its web site to a few reports that suggest proximity to rail stations doesn't hurt values. Nancy Medford of the steering committee is investigating this further. Visit <http://www.texrail.com/faq.asp> for their links. A development group was interested last year in townhomes on the vacant property west of the railroad tracks, south of Mistletoe Boulevard, and north of Magnolia, and was excited about the prospect of building this kind of residential across from a train platform. That developer, we learned Feb. 22, is no longer under contract to buy the lots.

TRAFFIC STEERING COMMITTEE MEMBERS: Here are members of the MH Traffic steering committee: Scott Nishimura (traffic committee chairman), Mike Danella (MH Association president), Brent Beasley, Marjorie Day, Rosaline Eastepp, David Gunn, Mecca Givens, Edward Herring, Carrie Johnson, Melissa Kohout, Josh Lindsay, Nancy Medford, Jim Peipert, Katrina Pittman, Susan Pressley, Megan Reece, Alex Rodman, and Rachel Stone.



**Happy
St. Patrick's
Day!**
March 17

THE LAW OFFICE of JASON AMON, P.C.



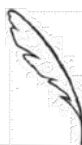
General Civil Practice

Estate Planning

Business Solutions

Adoption

Guardianship



1244 COLLEGE AVENUE
FORT WORTH, TEXAS 76104
(T) 817-332-1116
INFO@JASONAMON.COM



Residential Roofing Specialists
No-Charge Estimates • Reroof • Repairs • Inspections
817-738-1756

Dr. Kory S. Cummings

**THERAPEUTIC
OPTOMETRIST**

1101 West Rosedale
(S.E. corner Rosedale & Henderson)
817-294-4834
www.weloveyoureyes.com



Keep train station on Rosedale

Just to put in our vote on where to put the proposed train station. The back of our property adjoins the 2200 block of West Rosedale Street, and we were under the impression that the new commuter train station would be on West Rosedale Street. Why would anyone want to change that when it has already been approved by the Federal Government, etc. etc?

The change to Mistletoe Blvd is a terrible idea--There is already too much traffic in that location now and a parking garage or whatever would just make it worse on 8th Avenue and Jerome Street. All the hospital traffic is in that area too with emergency vehicles going and coming. At least West Rosedale has been improved, stoplights put in and it is ready to go.

*Robert & Patsy Slocum
2200 block of W. Rosedale So.*

Restriping Forest Park to a 2-lane boulevard

By Scott Nishimura

MH Traffic Committee chairman

The Mistletoe Heights Neighborhood Association adopted a resolution by vote at its Feb. 21 meeting to support a restriping of Forest Park Boulevard.

Here's the resolution:

"The Mistletoe Heights Neighborhood Association stands in favor of the implementation of a "road diet" on Forest Park Boulevard. Specifically, the Mistletoe Heights Neighborhood Association asks the City of Fort Worth to reduce Forest Park Boulevard from a 4-lane street down to a 2-lane boulevard, with a central turn lane and north-bound and southbound dedicated bike lanes on the sides. The road diet should be accomplished by re-striping Forest Park Boulevard from Park Hill on the southern end to Rosedale on the northern end. The Mistletoe Heights Neighborhood Association also requests that the City of Fort Worth include safe crossing striping and signage where appropriate along the boulevard, including but not limited to the installation of warnings at the crossing points for Tillery Park."

The resolution is the same as was adopted by the Berkeley Place association in January.

Next steps: the two neighborhoods will assign a group to approach the city. The city still

must vet the concept and, it decides to adopt the idea, come up with funding. The MH Traffic Committee is examining broader traffic issues around the neighborhood, and potential for other mitigation/elimination.

Many thanks to MH neighbors Susan Pressley, Megan Reece, and Mecca Givens for leading the Traffic Committee's work on this topic.

There was vigorous debate in the Traffic Committee, which approved the resolution Feb. 7 and sent it to the Neighborhood Association for a vote, about the Forest Park "Road Diet."

There were numerous voices for adopting the Road Diet as a way to slow vehicles down on Forest Park, reducing accidents, unifying both sides of the neighborhood, and making it safer for pedestrians and bicyclists.

There was also significant concern that traffic could back up on Forest Park, or be diverted to sidestreets such as Park Place and Jerome Street. An proposed amendment to the resolution failed on a tie vote at the Neighborhood Association meeting, and would have urged the city to conduct an examination of the impact of the road diet.

Dissenters to the amendment argued that Mistletoe Heights needed to project a united front with Berkeley. Supporters of the amendment argued MH is different than Berkeley, and has its own unique traffic problems.



Associates
of Internal
Medicine

AIM for your health

Preventive Health Screenings
(Well Man and Well Woman Exams)

Ages 14 and up

Diabetes

Weight Loss

High Cholesterol

Osteopathic Manipulative Treatment

High Blood Pressure

Heart Disease

Sick Visits

Inpatient Hospital Care



Pavani Bellary, DO



Niraj Mehta, DO



Morvarid Rezaie, DO

Our Board certified physicians are home grown right here in Fort Worth. They graduated from University of North Texas Health Science Center-TCOM and trained at Plaza Medical Center of Fort Worth. Now, our physicians want to take care of you - right here in your own neighborhood.

2260 College Avenue, Fort Worth, TX 76110

TEL 817-870-DOCS (3627)

FAX 817-870-3636

www.associatesofinternalmedicine.com

Free neighborhood classified ads

TAX PREPARATION. Jeri Jo Blackmon, former IRS Agent and current Enrolled Agent licensed by the IRS will prepare and e-file your individual or business tax returns. Accounting services are also offered for small- to medium-size businesses. Contact Jeri Jo Blackmon at 817-923-4393 or email JeriJo@charter.net. 1408 Mistletoe Drive.

TUTOR, K-3rd grade. Caring, encouraging, experienced (12 years) certified elementary school teacher is offering tutoring. Contact Kathy Jo Rogers at 817.688.0905 or kathyjorogers@sbcglobal.net.

EXPERIENCED BABYSITTER/NANNY/ CHILDCARE PROFESSIONAL. My name is Britney Owens and I live in the Mistletoe Heights Neighborhood. I have 8 years of experience in high end quality childcare and I am seeking to help you with your family's needs for a babysitter! I bring toys and it allows me to be very hands on and interactive when doing developmentally appropriate activities with children. I've had a variety of experiences. Currently I am working for Cooks Kids Place Childcare and a Nanny Agency where I have assisted Pro-Athletes Families. I would love to help you as well. Please call me at 817-253-4734 or email britneyn.owens@yahoo.com to let me know if I can help you!

HARPIST: Sally Sledge ministers on the harp as a worshiper, psalmist and vocalist. She has recorded two CDs: "Return to Your Rest" and "Cherished Times". She is available to play for home groups, church events, Bible studies, weddings, funerals, dinner parties or any special occasion. For more information and song samples, you may access her web site at www.sallysledge.com.

PIANO LESSONS for beginners and intermediates. Mary Smith, 2300 W. Magnolia Ave. 817-927-8876.

ESTATE SALE SERVICES - Estate Sales & Appraisals
Experienced, reliable estate sales in and out of Mistletoe Heights since 1992. Certified Appraiser, International Society of Appraisers. Appraisals for insurance, estate evaluations, donations; whatever your needs. Contact: Terri Ellis, Mistletoe Estate Sales, 817-926-9424 or email tquilts@mac.com

MEMORY QUILTS: Do you have more t-shirts than you can wear? I have a solution! Turn them into memory quilts. Call Jill at 817-217-4497 or visit www.sew-what-quilts.com

ADULT KEYBOARD CLASSES ~ Recreational Music-Making in Mistletoe Heights. Wish you had stuck with piano lessons as a kid? Would you like to play some familiar tunes? Put chords with them? Play in various keys? Enjoy these fun-filled, low-stress, 8-week keyboard classes. For more info, contact Carol Spencer ~ 817.927.3240 ~ carolinefw@sbcglobal.net or go to www.MistletoeMusik.com.

GOING OUT OF TOWN? Call Riley Gensheimer. Neighborhood teenager available for pet sitting and plant watering. Riley Gensheimer, (age 15) of 2337 West Magnolia, is available to take care of your home while you are away. I will bring in the mail, water plants and feed your pets for \$10-\$15 a day. Call 817-991-8214

LEARN TO SWIM LESSONS - With emphasis on Olympic strokes. Contact: Richard Sybesma, Head Swim Coach
TCU Box 297600, Fort Worth TX 76129
817-257-5646 or 817-257-7963

LIKE A GOOD NEIGHBOR, STATE FARM IS THERE.®



For your insurance and financial needs, see State Farm Agent:

Jason Needham, Agent, ChFC CLU
1708 8th Avenue
Fort Worth, TX 76110-1348
Bus: 817-821-4111 Toll Free: 866-945-2766
jason.needham.nv00@statefarm.com



LIKE A GOOD NEIGHBOR STATE FARM IS THERE.®

Providing Insurance and Financial Services

statefarm.com®

State Farm Insurance Companies • Home Offices: Bloomington, Illinois

P025038

9/09

Old Neighborhood Grill

A Simple Pleasure

1633 Park Place
Between 8th Ave & Forest Park
817-923-2282
Open 7a - 9p • Mon - Sat

Free neighborhood classified ads

WATER ~ Looking for fresh, clean drinking water for you and your family? Highly-filtered, affordable, and convenient? Check out PiMag water at www.nikken.com/goodnews or contact Carol Spencer at 817.927.3240 or carolingfw@sbcglobal.net.

HELP THE NIGHT SHELTER; If you are interested in participating in or donating to The Presbyterian Night Shelter's Operation Move Out, please contact Heather White at 817-632-7415 or hwhite@pns-tc.org

VINTAGE SALES

Estate sales and appraisals in Fort Worth since 1992. Call Anne Bourland for information. 817-924-5959

PET PORTRAITS:

Melissa Kahout's work is a perfect gift for the pet lover in your life. Great for graduations, anniversaries, birthdays, weddings or just because you love your pet. You can contact Melissa @817-924-7063 or www.mkohouthorseportraits.com

MISTLETOE HEIGHTS PET SITTERS is now booking for your vacation, or any other time. References available on request. www.mistletoeheightspetsitters.com or 817-247-2870

COMPLETE PROPERTY RENOVATION: Demolition, clean-up, specializing in historic home renovations, painting, wallpaper. Contact Jeff at 817-988-7113.

O

When holding a book or document in our hands, we gain access to information, history, ideas and images that have been passed down to us through the ages.

C

Octávaye practices the honored tradition of bookbinding by providing a variety of book/document restoration services. Examples of objects serviced include contemporary design bindings, scrapbooks, photographic albums, maps, prints and postcards.

T

Á

Octávaye's experienced team also offers custom exhibit services. Examples of installation services include, photo displays, restaurant and company showroom art collections. Octávaye's goal is to create an exhibit that meets your timeline, stays within your budget and most importantly, creates a lasting impression.

V

A

Please feel free to contact us for more information regarding pricing and services at:
817-891-0246, info@octavaye.com.

Y



E

Wendy A. Ossoinig
Linda F. Sale



TEXAS APPLIANCE & Builders' Supply



OUR NEW HURST LOCATION IS NOW OPEN!

Find the LARGEST APPLIANCE SELECTION in the State of Texas!
HUNDREDS OF APPLIANCES Under One Roof!
The LOWEST PRICES in the Metroplex!

Now with THREE LOCATIONS to meet all your appliance needs:

Our Newest Location!

3401 Pioneer Pkwy.
Arlington, TX

840 Airport Frwy
Hurst, TX

1500 I-20 East
Arlington, TX

817-299-2800


www.txappliance.com

I love my "gray Taco Bell"...

The gray mission-style bungalow on Harrison Avenue has been my home for almost 30 years. And Mistletoe Heights has always meant much more to me than just a convenient place to live.


I'm already your neighbor, I'd like to be your friend—and Realtor®.

While I may not have a drive-thru window, no one will work harder for you. After all, you know where I live!




"I am truly your neighborhood Realtor®—do call me for your real estate needs"

Gaye Reed



(817) 921-8164
gaye.reed@coldwellbanker.com



MEETING MINUTES FROM FEB. 21

Minutes from the February 21, 2012
Mistletoe Heights Neighborhood Meeting

1. The meeting was called to order at 7:15 p.m. by Mike Danella
2. Officers were introduced
3. Minutes from the last meeting were approved
4. Mike Danella made a motion to hold monthly rather than quarterly meetings. The meetings would be held at Lily B. Clayton and then possibly moved to the new hotel at Midtown.
5. Traffic Committee Report

Scott Nishimura presented findings from the traffic committee. The traffic committee voted at their Feb. 7th meeting to approve the proposal to place Forest Park Blvd. on a road diet. Scott explained the reasoning behind the proposal.

John Key spoke, as a fire chief, about the impact on emergency vehicles. His fire station is on a street that was put on a road diet. M. Key reported that emergency vehicles have been able to respond even more rapidly after the road diet because the turn lane gives room for emergency vehicles to pass.

Jason Brown from the Berkeley Association presented a powerpoint presentation about why the road diet is important and beneficial to our neighborhoods. The reasons listed were: 1) Forest Park is unsafe for all users, 2) no dedicated turn lane, 3) design encourages cut-through traffic, 4) No connection to existing bicycle network, 5) barrier that divides neighborhoods.

Re-Striping Proposal:

- 1) Remove a lane in each direction from Rosedale Ave to Park Hill,
- 2) Add dedicated center left turn lane,
- 3) Add bicycle lane in each direction,

Benefits of Re-Striping:

- 1) Increases safety for all users (slower average speeds, dedicated bicycle lanes, safer pedestrian crossings),
- 2) Street supports non-motorized road users (bicycle lanes, encourage pedestrian use of existing sidewalks, creates a neighborhood street),
- 3) Smoother Vehicle flow (fewer stop waiting on turning vehicles, consistent speed, reduced accidents, less non-local traffic, better support for EMS),
- 4) Increase cohesion between both sides of neighborhood (removes neighborhood blight, helps unite neighborhoods separated by Forest Park, creates a better neighborhood street, inexpensive upgrade).

Principle of the complete street: ?

A motion was made and seconded to join with the Berkeley Association in proposing a road diet for Forest Park Blvd. Then a substitute motion was made that Mistletoe Heights is committed to understanding how these changes impact the entire neighborhood and recommends a thorough study of the impact of the road diet on the entire neighborhood. A vote on the substitute motion 22 in favor and 22 opposed. The substitute motion was withdrawn. The original motion was passed to join with Berkeley association. Add the motion from the agenda

6. Train station - Scott Nishimura discussed the proposed locations for the commuter rail station. Neighborhood train hearings will be held March 20th & April 10th at 6PM. The meetings will be held at St. Stephen's Presbyterian Church. The T will be present at the meetings to discuss the impact of the proposed train stations on the neighborhood.

7. Noise barrier - The five homeowners deemed to be affected by the noise from the new NTTA toll were allowed to vote on whether they desired the wall to be built according to the plans for a five foot wall to be built on top of the berm.

The sound barrier has now been moved to the bottom of the berm, the art-deco design and been removed, and landscaping will be provided.

Residents who live on Rosedale are opposed to this proposed change because they feel that it will lead to the following issues:

- 1) increased shelter for the homeless,
- 2) increased trash,
- 3) increased drug dealing activity,
- 4) The residents would like the neighborhood association to support them in asking NTTA to put the sound barrier in the original location at the top of the berm.

A motion was made that a request be sent to Joel Burns and NTTA requesting that the sound barrier be moved to the top of the berm and that landscaping be included in the plan. The motion was seconded and passed unanimously.

A motion was made and seconded to adjourn the meeting at 10:25 p.m.

- Meeting minutes taken by Lisa Gowan

Banking Made Easy

Corner of Hemphill and Magnolia
817-927-7730

SOUTHSIDE BANK

Member FDIC

www.southside.com

urbanYOGA

NIA

BARRE

urbanYOGAfw.com

1706 8th avenue, fort worth
817-908-flow

urbanYOGA

Hilton Garden Inn to be completed soon

Construction for the new Hilton Garden Inn is scheduled for completion by May 2012. Weis Construction serves as the contractor for the project. The hotel will be owned and operated by Raymond Management Company.

All Hilton Garden Inn hotels feature the Serta Perfect Sleeper Beds. Guests will stay productive with both wired and WiFi Internet access in guestrooms and public spaces. Each hotel guest room features a 42" high definition television, an ergonomic Mirra® desk chair by Herman Miller; a spacious and clutter-free work desk; and speaker telephone equipped with data port and voice mail. Guests will also benefit from the complimentary 24-hour business center, featuring Print Spots™ remote printing which allows wireless printing from any laptop or PDA.

Guests can start off their day with a full-cooked-to-order breakfast featuring omelets, fruit, breads and the brand's signature waffle in the Garden Grille and Bar® restaurant. The restaurant will also serve cocktails and dinner, as well as evening room service. The Pavilion Pantry® is open 24 hours and features a complete selection of salty snacks, sweet treats, cold beverages as well as freshly prepared, frozen and microwaveable packaged items.

Other hotel amenities include: a glass-enclosed Pavilion lobby featuring a comfortable lounge area with a television and fireplace; an easy-to-set alarm clock that allows guests to play their portable CD or MP3 player; an in-room "hospitality center" with a mini fridge, microwave oven and coffee maker; a sitting area with an easy chair and ottoman; a hairdryer; and an iron and ironing board. The hotel's recreational facilities consist of a fitness center with state-of-the-art Precor cardiovascular and strength training equipment, as well as an indoor swimming pool and whirlpool.

The hotel will also feature 4 meeting rooms offering 7,000 square feet of flexible space and an on-site guest laundry facility.

Hilton Garden Inn Fort Worth/Medical Center participates in Hilton HHonors®, the only hotel rewards program that offers Points & Miles® and No Blackout Dates. For more information about our locations around the globe, visit www.hgi.com or call 1-877-STAYHGI.

Ad Manager Needed

The Mistletoe Express is looking for a new Ad Manager. Kelley Reece has stepped down as our Ad Manager after doing a fantastic job for the last several years. We thank Kelley Reece for all of his hard work and for helping make the newsletter a revenue source for our neighborhood. Our little newsletter has become a vital part of creating the means to revitalize our neighborhood because of Kelley's dedication. If you run into him, you should give him a pat on the back for doing such a great job.

The Ad Manager position is an important one, helping local business keep in touch with the people who live right next door. As the Ad Manager you will support our local economy and help Mistletoe Heights remain on a constant upswing.

Won't you step up and volunteer for this essential neighborhood position?

Please contact Marjorie Day, 817-914-8057, or send an email to perrellim@aol.com.

Judy Garza Plumbing

Reasonable Rates and Senior Discounts

Licensed and Insured -- M14707

817-495-3406

After hours and weekend service available

Ben Taylor Optical

Style • Service • Savings

1101 West Rosedale

817-870-2061

www.BenTaylorOptical.com



Jeff Davis
Chairman/Fort Worth Division

REPUBLIC TITLE OF FORT WORTH

420 Throckmorton
Suite 640
Fort Worth, Texas 76102
Main (817) 877-1481
Metro (972) 445-5044
Direct (817) 806-1301
Fax (817) 810-1051

A DIVISION OF
REPUBLIC TITLE OF TEXAS, INC.

Email: jeffdavis@republictitle.com

Julia's Housekeeping



Local, reliable, hardworking housekeeper with excellent local references wants to clean your Mistletoe Height's home.

I'm ready to make your home spotless.

Flexible times available.

Call for a cleaning estimate:

682-433-8825

The big highway is coming!

In case you have been living under a rock...

Chisholm Trail Parkway (CTP) is under construction as a limited-access toll road in southwest Tarrant County. It will extend from Fort Worth's central business district to southwest Fort Worth, continuing south to Cleburne, and provide a north-south alternate route for Interstate Highway (I) 35W. Formerly known as Southwest Parkway (SWP)/Chisholm Trail, the new corridor in southwest Tarrant and northwest Johnson counties is expected to open to traffic in mid-2014.



Cowtown Cleanup is April 14

The 27th annual Cowtown Great American Cleanup is set from 8:30 to 11:30 a.m. Saturday, April 14, so start putting together a group to keep Fort Worth beautiful.

Groups, clubs, businesses or individuals can pick their own cleanup locations or join a cleanup. The city has set up four cleanups for anyone to join:

- Marine Creek Ranch, 5403 Paloma Blanca
- Hazel Harvey Peace Center, 818 Missouri Ave.
- Lake Arlington at Eugene McCray Park, 3449 Quail Road.
- Trinity Park Pavilion No. 3, 2401 University Drive.

Registered participants will receive trash bags, t-shirts and gloves.

To register for a group or individually, go to <http://fortworthtexas.gov/applications/cowtowncleanup/>

Cleanup Party

Celebrate after the cleanup at the Earth Party, 11:30 a.m. – 1:30 p.m. in Trinity Park. The program includes lunch, vendor booths, prizes and entertainment by trash-can band Vocal Trash.

How to participate

Recruit Volunteers

Register your group by April 1.

Have your group volunteers fill out the online registration and waiver as well (waivers required for all volunteers).

Pick up supplies between Noon and 6 p.m. April 12 at the Hazel Harvey Peace Center for Neighborhoods, 818 Missouri Ave.

After your cleanup April 14, drop off bagged trash at one of nine sites.

Crimes for Mistletoe Heights during Feb. 2012

Fraud

Zoom here

Case Number: 120015925

Date: 2/2/2012 3:00 PM

Location: 2200 BLOCK MISTLETOE AVE

Description: False pretenses, swindle

This was not sent in by the east side officer David Cloninger. He is still not letting the neighborhood know of crimes on the eastside of Mistletoe Heights.

Personally, I think that the eastside has no NPO and I would urge the neighbors on this side of Forest Park Blvd to ask themselves why?

Submit your neighborhood photos to the newsletter

We love to see what's going on in Mistletoe Heights. If you capture an image of neighbors together or something that needs to be addressed or just the prettiest landscape design you've ever see, send it to us and we'll try to get it in the newsletter!

Please send to Newsletter Editor Marjorie Day at perrellim@aol.com. Give her a call if you have (gasp!) actual photographs!

PARK PLACE PHARMACY

Business Hours:

Monday - Friday

9:00am to 6:00pm

**Closed Weekends
& Holidays**

Craig Nicholson, RPh

Monique Nicholson, RPh

Your Neighborhood Pharmacy

Phone: 817-924-9292

Fax: 817-924-9264

**1601 Park Place Ave, Suite B
Fort Worth, TX 76110-1303**



Message from the President

Steps to a Successful Neighborhood Meeting

The following are my guidelines to a successful neighborhood meeting. I encourage attendance and participation of these meetings. The meetings are a good way to learn about issues impacting our neighborhood as well as a forum to voice opinions

Publicize the meeting. Notice of future meetings will be publicized in the Mistletoe Heights newsletter, web site, email, and by use of street signage.

Prepare a written agenda. An agenda will be developed before each meeting and will be publicized in the Mistletoe Heights newsletter and web site. Copies will also be made available at each meeting.

Every meeting must have an agenda or purpose. The agenda is a detailed list of specific items, in the sequence in which they will be covered. Adherence to the agenda will enable efficient and timely meetings. One item at a time will be discussed - jumping around from one item to another can be confusing, and it generally delays progress.

* A typical order of business for a meeting might be:

Welcome

Approval of minutes (from last meeting)

Treasurer's report

Old business

New business

Announcements (including date and time of the next meeting)

Adjournment

* Start meetings on time. Most meetings will start at 7 p.m. promptly.

* Length of time. Meetings shall be limited to 1 hour to 1.5 hours.

* Presentations. Allow a presenter to complete their presentation before asking questions. This will save time and result in a more orderly, well-run meeting. Time will be allotted for questions after the presentation.

* Limit crosstalk. Allow one person at a time to speak and limit sidebar conversations.

* Getting on the agenda. Contact me if there is a topic that you want to be included on the agenda.

*Mike Danella, MHA President
Irwin Street*

Mistletoe Heights Association

Meeting: 13 March 2012

Agenda

1. Welcome
2. Approval of minutes (from last meeting)
3. Treasurer's report
4. Old Business
5. New business:
 - a. Gas Drilling/Leasing – Norm Stemple
 - b. Feral cats – Rose Lynn Scott
 - c. Zoning
 - d. Neighborhood Beautifications – Mike Danella
 - i. Entrance area
 - ii. Sidewalk tree planting
 - iii. Entrance sign
 - iv. Sidewalk
 - e. Funds
6. Announcements (including date and time of the next meeting)
7. Adjournment

A-1 MASONRY REPAIR SPECIALIST

OLD HOME SPECIALIST / SINCE 1980

MORTAR COLOR MATCHING

LOCAL REFERENCES AVAILABLE

ALL MASONRY NEEDS

FREE ESTIMATES

RODNEY MASTERS / 682-239-8325



Retirement May Be Far Off, But the April 17 Deadline for IRA Contributions Isn't.

You have only so many years to prepare for retirement. That's why contributing to your Individual Retirement Account (IRA) is so important. Fortunately, you still have time to maximize your 2011 IRA contribution before the April 17 deadline.

By contributing now, your retirement savings can have more opportunity to grow. Even if you already have an IRA elsewhere, it's easy to transfer it to an Edward Jones IRA and begin receiving the face-to-face guidance you deserve.

To learn more about the advantages of an Edward Jones IRA, call or visit today.



Bruce C Border, CFP®
Financial Advisor

2453 Forest Park Boulevard
Ft Worth, TX 76110
817-926-8056

www.edwardjones.com Member SIPC

Edward Jones
MAKING SENSE OF INVESTING