



# Mistletoe Express

[www.mistletoeheights.com](http://www.mistletoeheights.com)

February 2012

## MESSAGE FROM THE PRESIDENT

### Let's get working on our Mistletoe goals

I hope all residents of Mistletoe Heights had a great holiday season. Here's to an even better 2012. In the last newsletter, I listed several goals for the upcoming year. I believe we should get to work on a few of them now.

Here's what's on the immediate agenda:

- The MH Traffic Committee will be meeting at 6:30 p.m. on Tuesday, Feb. 7, at the Fort Worth South offices, 1606 Mistletoe Blvd., to discuss a traffic mitigation proposal to help reduce traffic and traffic speeds on Forest Park Boulevard. Please contact Scott Nishimura, Mistletoe Heights, traffic committee chairman, 817-913-8671, [julieandscott91@att.net](mailto:julieandscott91@att.net), for more info or to join the traffic committee. This item is also scheduled for discussion at the Mistletoe Heights association's regularly scheduled quarterly meeting.

- The MHA quarterly meeting will be held at 7 p.m. Tuesday, Feb. 21, at Jeff Davis' home, 2325 Mistletoe Drive. This information will be on our website, [www.mistletoeheights.com](http://www.mistletoeheights.com), and a reminder will be sent out to the neighborhood via the residents email list. If you are not on the email list, the instructions to sign up are always in the newsletter.

Secondly, I would like to discuss some of the things that have occurred the past several weeks:

- Christmas trees were placed at the Triangle and in Newby Park for the holidays. By all accounts they were a big hit. Hopefully this will be the start of a long tradition.

- A zoning issue on a property on West Rosedale has been determined favorably to our residents. Future zoning changes are desired for the entire block and we will need to work with the city to get the desired changes.

- Several members of the neighborhood met with representatives from NTTA and the City for Fort Worth regarding the Chisholm Trail Parkway sound wall. Further discussions will be necessary to determine the final alignment and design of the sound wall.

*Continued on Page 3*

## Happy Valentines Day!



### Porch Tree Winner

The Hotards of 1201 Mistletoe Drive won this year's contest. It was nearly impossible to choose a winner with so many wonderfully decorated trees this year. Fifty-six porch trees to be exact, ranging from trees that nearly took up an entire porch to a tree that was two feet tall. Sadly, we have no photos to print. Thanks for making your neighborhood so great.

**Mistletoe Heights Association Quarterly Meeting 7 p.m. Tuesday, Feb. 21, at Jeff Davis' home, 2325 Mistletoe Drive.**

### Inside This Issue

Page 2 - Yard of the month  
Page 4 - Events  
Page 5 - Gardening column

Page 6 - Neighbor spotlight  
Page 7 - Make Forest Park safer  
Page 8 - Traffic committee

meeting, Train station, Drilling  
Water Disposal meetings  
Page 9 - Pedestrian meeting,

Neuter Scooter  
Page 10-11 - Classified ads  
Page 11 - Treasurer's report

# Mistletoe

progressive family Therapy Group & art Gallery

2120 Mistletoe Blvd, suite 1, FW TX 76110

therapy is normal.  
we all need it.  
it's a gym membership  
for our mind,  
for our feelings,  
for our perspectives.  
it serves  
to fuel, clarify, and drive.  
we are all doing just fine.  
but we owe it to ourselves  
to maintain,  
to grow our minds.

[Mistletoegroup.com](http://Mistletoegroup.com)  
therapy is normal

## 2242 Mistletoe Blvd.



Certainly, we all admire stunning gardens created by seasoned, professional landscapers. But some gardens are born from rescued and passed-along plantings, a keen eye for abandoned homesteads, and a quick scissors hand. Local artist Melissa Kohout's native and adapted garden at 2242 Mistletoe Blvd. is one such garden.

For the last 14 years, the Mistletoe Boulevard hillside has slowly filled with native and adapted plants that are standing the rigorous test of drought, wind and car exhaust, not to mention an ice storm or two.

You might see Melissa driving around the less swank parts of Fort Worth after the wrecking ball hits. She keeps handy a shovel, a bucket and a trowel to unearth forgotten plants that have survived years of total neglect.

"Hey, if a plant can survive on the side of a boarded-up homestead for 60 years with no watering, no fertilizer, no pruning, well, hey, that's my kind of plant," Melissa said, before starting out on a recent bulb rescue on an abandoned lot near the railroad tracks. "If nobody wants you, I'm coming to dig you up."

This 100 percent organic garden uses crumpled leaves as mulch, and rainwater instead of city water whenever possible.

Melissa made and installed her own 300-gallon rain barrel system from used Coca-Cola barrels and has recently created a cactus garden to further reduce the garden's need for water.

Original rail ties from the trolley that once ran along Mistletoe Boulevard were salvaged from recent roadwork on the street, and now are part of Melissa's native border.

Melissa now has her eye on adopting an abandoned antique rose close to the railroad tracks.

Thanks, Melissa, for creating an environmentally friendly garden. Melissa will receive a \$50 gift certificate from Calloway's Nursery this month. Thanks, Calloway's, for your generous monthly donation to our neighborhood!

### Melissa's plants:

The cactus garden left of the drive: red hot poker, devil's head cactus, barrel cactus, pear cactus, Turk's cap and yucca.

On the top of the hillside: Texas sage, Mexican petunia, iris, Turk's cap and an antique rose.

On the hillside and hell strip: firebush, butter and eggs, lantana, salvia, blackfoot daisy, coreopsis, evening primrose, poppies, lavender, Russian sage, Mexican hat, purple verbena, purple coneflowers, cannas, yarrow, columbine, bluebonnets, Indian blanket, larkspur, butterfly bush, black-eyed susans and various specimens of iris.

### Jeri Jo Blackmon

Professional Tax and Accounting Services

817-923-4393

Email: [JeriJo@Charter.net](mailto:JeriJo@Charter.net)

Enrolled Agent licensed by the IRS

1408 Mistletoe Drive  
Fort Worth, TX 76110

Cell: 817-925-7833  
Fax: 817-924-7733

enjoy sushi tonight  
you can BYOB (\$5 per person)



temaki sushi

1504 w. magnolia ave., fort worth, 76104  
817.810.0438

[www.sushionmagnolia.com](http://www.sushionmagnolia.com)





Check out our updated website:  
[www.mistletoeheights.com](http://www.mistletoeheights.com)

### Get on the Mistletoe Heights email list

To subscribe to the Mistletoe Heights Residents mailing list, go to [www.mistletoeheights.com](http://www.mistletoeheights.com), click on "Email List" and look for the section "Subscribing to Residents". Enter your email address and name and click "Subscribe". Be aware that you may need to add [residents-bounces@mistletoeheights.com](mailto:residents-bounces@mistletoeheights.com) to your address book so the incoming emails are not treated as spam. We're still missing lots of neighbors on the email list. If you have any questions or concerns about the email list, contact [moderator@mistletoeheights.com](mailto:moderator@mistletoeheights.com).

## Message from the President

*Continued from Page 1*

Since spring will be upon us soon, I would like to initiate the following:

- More information and discussion about possible train station and bus bays site need to be followed closely by the MHA. Please attend your neighborhood meetings to stay informed.

- A neighborhood-wide live oak tree planting plan along sidewalks within the streets right of way – this will serve as both a beautification program as well as a noise reduction plan. The work that needs to be done includes an identification of areas where there are currently no trees along the sidewalk, a total number of trees required, a tree supplier, and a method to plant the trees. A total cost estimate will be developed and presented to the MHNA. As part of this effort, I request the assistance of homeowners to water each tree planted in front of their property. This will guarantee the survival of the trees and also enhance the property values. In the present every-day parlance, it is a win-win for all. It is anticipated that the majority of trees will be planted east of Forest Park Boulevard.



Design of landscaping improvements at the entrance of the neighborhood from Forest Park Boulevard to Jerome Avenue, and west of Forest Park Boulevard. This includes plantings at the Jerome/Rosedale entrance.

These two items will require much work. Please contact me, or any of the MHA officers, if you would like to help in these two important efforts.

■ Also, I would like to develop a place on our Mistletoe Heights web site for historic information such as old photographs and maps – these could then be viewed by all. Old home or street photographs of the neighborhood could be posted and I think would be very interesting to see. I have several old aerial photographs of the neighborhood and old maps that I can contribute. I have asked our Webmaster Scott Ewing to develop this for the web site.

*Mike Danella, MHA President  
 Irwin Street*



BOTANICAL RESEARCH  
 INSTITUTE OF TEXAS

Plant to planet.™

**BRIT® is open on Saturdays**  
 10 a.m. to 2 p.m.

**Educational fun for the whole family!**

Tour our campus; shop Flora™, the Gift Store at BRIT; and partake in exciting programs and events.

Visit [BRIT.org](http://BRIT.org) for a complete calendar of events, including the first major exhibit of our collections, *Native to this Place: The Plants and Prairies of North Central Texas*.

ph 817.332.4441

1700 University Drive

Follow us @BRIT\_org

[BRIT.org](http://BRIT.org)

Fort Worth, TX 76107-3400

Facebook.com/BRITorg



**3 DAYS ONLY!**  
 JANUARY 7-9

**Start for \$0**

plus get 5 friend passes

Offer valid with 12-month registration.  
 Other restrictions may apply.

Broadway Baptist Church  
 305 W. Broadway, 76104  
 First Christian Church  
 612 Throckmorton, 76102  
 For a total of 19 classes a week  
 817-521-7444  
[jazzycjac@att.net](mailto:jazzycjac@att.net)

To learn more visit  
[jazzercise.com/supersale](http://jazzercise.com/supersale)

**jazzercise**

[jazzercise.com](http://jazzercise.com) • (800)FIT-IS-IT

Cheryl Burke  
 Two-time Champion  
 Dancing with the Stars

## February Meetings, Dates

**Feb. 2** Groundhog Day

**Through Feb. 4** The Stock Show/Rodeo runs through Feb. 4. Nearly one million people from all over the world will go to the Will Rogers Memorial Center in the Cultural District for the nation's oldest stock show and rodeo, plus tons of other cool stuff to buy eat and see.

**Feb. 5** Super Bowl

**Feb. 7** The Mistletoe Heights traffic committee will meet 6:30 p.m. Tuesday Feb. 7 in the offices at Fort Worth South, 1606 Mistletoe Blvd. at Eighth Avenue. Please contact Scott Nishimura, Mistletoe Heights traffic committee chairman, 817-913-8671, julieandscott91@att.net, for more info.

**Feb. 14** Valentines Day. Cards, flowers, music, chocolate, dinner out, you know the drill or mope around in misery...you decide.

**Feb. 20** Federal President's Day/Washington's Birthday

**Feb. 21** Fat Tuesday/MardiGras

**Feb. 21** MHA Quarterly Meeting, 7 pm, Jeff Davis' home 2325 Mistletoe Drive

**Feb. 22** Washington's Birthday and Ash Wednesday  
**Feb. 26** Cowtown Marathon. 11 am, Cultural District.

**Feb. 29** Leap Day. Leap Day is practically every four years. It's every four years minus years ending with "00" that are not divisible by 400. If your birthday is on Leap Day, you finally get to celebrate your birthday on your birth date. It's official. So are you about 25% older than your legal age? I'm confused.

## The Cowtown route near Mistletoe

On Feb. 26, the Cowtown Marathon makes a right on Park Place Ave. at Mile 13 and then a left up Forest Park Blvd.

Runners need support to get it done. Let's cheer the runners as they go by! The runners should be at this point between 8 and 10:30am.



## Mistletoe Heights Neighborhood Annual Events

### ■ Spring covered dish dinner

at Lily B. Clayton Cafeteria, date TBA

**We need a host for this event...maybe YOU?**

Host would be responsible for bringing dishes, utensils and tea/ice and water. MHA would reimburse expenses.

### ■ Neighborhood Easter Egg Hunt

April 7, 2012. 10 a.m. at Newby Park

Hosted by **Susan Pressley**

### ■ Neighborhood Garage Sale

Date TBA (Usually in April)

### ■ Fourth of July Parade and Ice Cream

Social, Triangle Park, 7 pm

**We need a host for this event...maybe YOU?**

Host would be responsible for bringing the popsicles and handing them out. MHA would reimburse expenses

### Fall Covered Dish Dinner

Lily B. Clayton cafeteria, date TBA

**We need a host for this event...maybe YOU?**

Host would be responsible for bringing dishes, utensils and tea/ice and water. MHA would reimburse expenses.

### Bow-tying Party for our Street Light

**Decorations**, November 18<sup>th</sup>, 2012, 3 p.m.

2237 Irwin - Hosted by **Susan and Gary Willis**

**Mistletoe Heights Neighborhood Holiday Party**, December 2, 2012

**We need a host for this event...maybe YOU?**

Host would open their home to the neighborhood and provide dishes, utensils and non-alcoholic drinks. MHA would reimburse expenses.

## Host an event - here's how

Hosting a neighborhood event is a great way to get involved and meet your neighbors, too. Sometimes neighbors team up and work together on these events. MHA will reimburse you for any of the supplies needed, such as dishes, utensils, drinks, etc.

These events help make Mistletoe Heights the special neighborhood it is. If you are interested in hosting one of these events, please contact Rose Lynn Scott, 817-807-6748.



Our new  
**Mobile location**  
is now  
at your  
**fingertips**

Get access today at [mbtx.com](http://mbtx.com)



**Meridian Bank Texas**

100 Lexington St, Ste. 100 | Fort Worth 76102

817.334.4600 | [www.mbtx.com](http://www.mbtx.com)



# Going native: Small changes make a big difference

Last summer was a wakeup call. Do you want another year of a brown lawn and torched azaleas?

Using Texas native and adapted plants in your garden minimizes water use, reduces maintenance time in the garden and eliminates the need for pesticides and inorganic fertilizers that create soil and water pollution.

A native garden doesn't need to look like you eat only granola and brown rice and listen to Native American flute music when you awake. A native yard can be just as lush, colorful and coordinated as a traditional landscape.

Native and adapted yards are the future of North Texas, so it's time we start to turn our landscape in the direction we're all headed in anyway.

Of course, it's easy to tell you to rip out your landscape and change it, but large-scale landscaping changes cost money. Take heart! Simply changing out small sections of your lawn for native plantings on a yearly basis makes a difference rather quickly.

Plan to take out 200 feet of lawn this year for a native garden.

## Soil prep

Begin with a soil test, which you can arrange by contacting the Agrilife Tarrant County Extension Office and asking to speak with a master gardener. When you get your results, you can amend and fertilize organically with what your garden actually needs.

Mistletoe Heights has mostly clay soil. You can tell by picking up a handful of soil. Clay soil has a sticky texture and you can easily make dirt cigars with little effort. If your soil is clay, you can cover the garden with three inches of expanded shale and till in along with four inches of compost.

You'll only have to prep once with expanded shale, but compost should be applied a couple of times per year, along with a good-quality mulch. Follow the advice of the results of your soil test in regard to amendments and fertilizers.

Soil prep is the key to gardening in Fort Worth, especially considering our record-high temperatures.

## Plants

Go to [txsmartscape.com](http://txsmartscape.com) for a list of plants and their requirements, along with their bloom times, sizes and preferred light requirements. The website also has resources on how to design and care for your garden. Be sure to check out [txnativeplants.org](http://txnativeplants.org) for a list of plants that do well in our area.

## Mulch

When you plant, never skip the top dressing of mulch. Good-quality organic mulch reduces water loss and weeds and evens out soil temperatures, protecting plants in the winter and cooling them in the summer. Three inches of mulch laid over your garden changes your odds of success entirely.

## Water

Native and adapted plants use less water. Choose drip irrigation or soaker hoses in your new garden bed. Using seeping water with large droplets, as opposed to misting, will reduce water use considerably.

On our property, we make changes every year, moving further toward the goal of a native and adapted landscape. Our efforts are imperfect, to be sure.

We've over-watered, under-watered, bought the wrong plants, bought the right plants and put them in the wrong spots, ignored good advice and listened to bad advice. We've bought the right plant, put it in the right spot with all the right amendments and it died anyway. And that's gardening.

But we're always trying to improve our efforts and our garden. With no sprinkler system, we have to do a lot of watering in the summer. Each year we work to reduce our water use by better planning, better maintenance practices, more drip irrigation and rainwater harvesting. The key is to take the steps each season in the direction we're all headed.

## THE BASTION ON HEMPHILL

Catering • Restaurant • Culinary Classes • Private Event Space  
2100 Hemphill (Entrance in back at Hawthorne & Travis)

*Catering for private dining, special events & office lunch delivery*  
(Reservations & minimum order required)

*February/March dinner & culinary class schedule*  
[www.bastionrestaurant.com](http://www.bastionrestaurant.com)

***Chef Chandra Riccetti 817-913-6972***

*Help restore Hemphill and  
a Texas Historic Landmark...  
One meal at a time!!*





BEYOND LAVENDER  
Relaxing Facials & So  
Much More!

New Client Special Offer  
Microdermabrasion  
& Organic Facial  
\$69

(\$190 value)

[www.beyondlavender.com](http://www.beyondlavender.com)

click monthly specials to  
purchase special offer

Renew Day Spa  
2116 Mistletoe Blvd  
Fort Worth, TX 76110  
817-683-4138



## Mediterranean flavors infused with Southern Hospitality.



**CHADRA**  
MEZZA & GRILL

Southern Hospitality. Mediterranean Flavor.  
1622 Park Place Avenue | [www.chadramezza.com](http://www.chadramezza.com)  
Fort Worth, TX 76110 | 817.924.2372

## LOCAL FOOD EDITOR'S PICK

### The Black Rooster Bakery

2430 Forest Park Blvd. (Forest Park at Park Hill) 817-924-1600

Love, love, love this place. Oh thank you kind universe for The Black Rooster Bakery. Thank you MarcheAnn Mann, not only are you an adorable and dedicated lady but you have brought real bread to the neighborhood. Fresh bread people, from Pane Pugliese to Sourdough to Apple Pie. Add a cup of Fair Trade organic coffee and what is not to love about this place? MarcheAnn makes sandwiches on real bread. She sells organic milk. I need a Kleenex. MarcheAnn is now considered an Italian American because she makes bread that good, ok? Can you dump that Subway sandwich and go here for lunch? Stop what you are doing Mistletoe Heights people and scoot up the hill to this great corner bakery and get the fresh bread habit. My only gripe is that The Black Rooster Bakery is not open all week. The girl behind the counter told me MarcheAnn has to rest. Rest? I guess. The other bummer is I have to count carbs.

B.T.W. Do not put Black Rooster Bakery bread in a plastic bag. Do not heat it in a microwave and don't put it in the fridge or the Foodie police will put you in foodie prison where you will eat spray cheese, spam and Wonder bread until you are declared legally dead.

## NEIGHBORS IN THE SPOTLIGHT

### Carol Benson, Rose Lynn Scott

There are two very good articles about a couple of our Mistletoe Heights residents. You may have already read them in Indulge magazine and 360West magazine. Here are the websites, in case you missed them.

**Carol Benson**, January 2012, Indulge magazine

<http://www.star-telegram.com/2012/01/03/3631251/artist-caro-bensons-home-and.html>

**RoseLynn Scott**, January 2012, 360 West magazine

<http://www.360westmagazine.com> – "Move Your Feet" article on page 17 of the January 2012 issue. RoseLynn Scott and the Southside Preservation Hall are featured.

## OBITUARY

### James Pennington Tant (1921 - 2011)

Here is the link to the obituary in the Star Telegram: [www.legacy.com/obituaries/dfw/obituary.aspx?n=james-pennington-tant&pid=155258361#storylink=cpy](http://www.legacy.com/obituaries/dfw/obituary.aspx?n=james-pennington-tant&pid=155258361#storylink=cpy)

An excerpt:

He was born Dec. 5, 1921, in Esom, Ga., to Benjamin E. Tant, a road master for Seaboard Railroad, and his wife, Mamie Taylor Tant. He was the third of nine children. He graduated in 1939 from Hillsborough High School in Tampa, Fla., where he was an ROTC sergeant major. He studied electrical engineering at the University of Florida and University of Nevada. During World War II he attended Bombsight Maintenance School in the U.S. Army Air Corps and served as Norden bombsight repairman. At the end of the war he worked for Tampa Electric in payroll and inventory. He then began a long career as financial officer in the grocery industry serving as assistant office manager with Safeway Stores, Inc. in El Paso, chief accountant, vice president, secretary and treasurer of Food Mart Inc., and then chief financial officer of Shop-Rite Foods Piggly Wiggly in Albuquerque, N.M., and later Grand Prairie. In 1978 he entered the insurance field as an independent agent with the Burgess Hudson Agency. He retired as agent emeritus with The Prudential. Jim was a kind and generous man, a wonderful dancer, a great cook, and a supportive husband. He was preceded in death by his parents; his wife, Emma Jean Tant, Ph.D.; sisters, Rachel, Evelyn and Carrie; and brothers, Eugene and Robert. Survivors: Sisters, Winifred Rogers and Annie Conally; brother, Ralph Tant; daughter, Patricia Cauffiel; granddaughter, Annette Michelle St. Onge; great-granddaughter, Olivia Ann St. Onge; stepson, Billy Gene Stone; and many friends.



# Appeal to Joel Burns for a safer Forest Park

Representative Burns,

I live in your district on the corner of Forest Park and Harrison. I moved back to live with my parents a little over two years ago, and there have been four or five major wrecks off Forest park between Harrison and Mistletoe that I know of since I have been back.

As a result of those wrecks people have been injured, vehicles have been destroyed, the fire hydrant has had to be replaced, along with several Crape Myrtles. Not to mention, we had one van that ended up on our side yard and almost hit the house.

The wreck that inspired me to contact you is one that happened on Martin Luther King Jr. Day last week. It happened about 7:25am. I was getting ready for work, and I heard the screeching of the tires. I just knew they were going to hit, so I walked towards our front door, and in doing so, I heard the vehicles collide. I proceeded to walk out the door and investigate. There were two cars involved and one the cars had two young children in the backseat. Since there were children involved, I felt it was time to contact you.

In my research of the area, traveling south bound there are signs that flash and warn about the turn and how slippery it can be. However, traveling northbound there is only one sign to warn of the turn. I know that at least four of the wrecks involved people traveling northbound.

In talking with my parents, I found out that there have been a great number of wrecks over the 17 years they have lived at this house. They and other concerned neighbors have contacted past city council members, but nothing has been done. After discussion we think the



This picture indicates the final resting spot for these vehicles. They actually collided 75 -100 feet prior and in the opposite flow of traffic. This was partially due to the inclement weather and their speed.

best solution may be to add stop lights. We are hoping that you and your staff might also have suggestions for solutions, and for how to get the process started to request a stop light.

We would appreciate if you or a staff member could contact us to discuss the problem and to develop a plan to resolve this before anyone else gets hurt.

Thank you in advance for your attention to this matter.

Sincerely,  
Donna Christy  
Harrison and Forest Park Blvd.

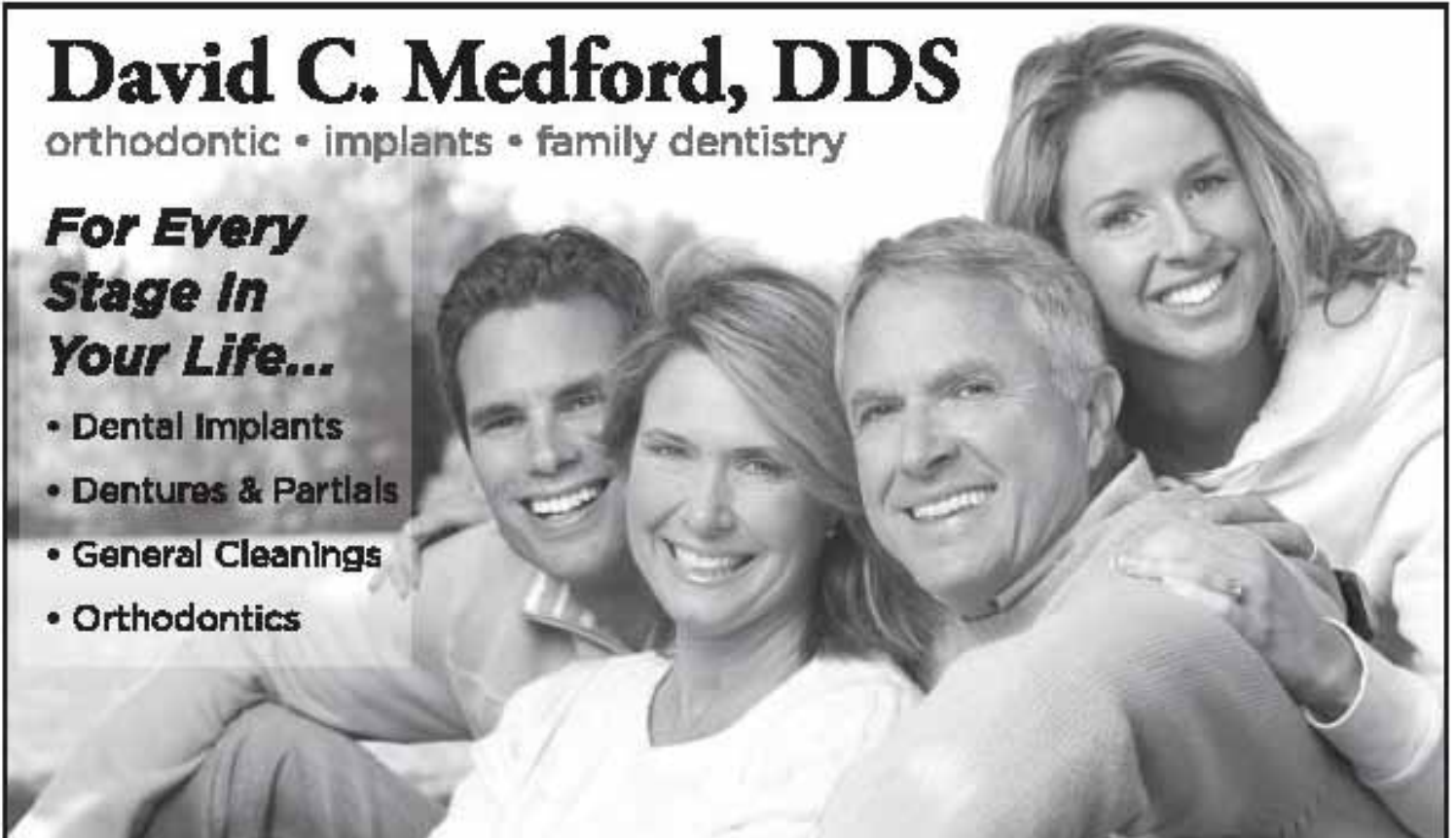
Here is Representatives Burns contact information:  
District 9 Office, 1000 Throckmorton St.  
Fort Worth, Texas 76102  
Telephone: 817-392-8809, Fax: 817-392-6187  
E-mail: District9@fortworthgov.org

## David C. Medford, DDS

orthodontic • implants • family dentistry

**For Every  
Stage In  
Your Life...**

- Dental Implants
- Dentures & Partial
- General Cleanings
- Orthodontics



**817.923.9877** 2517 8th Ave. • Fort Worth • [www.drmedford.com](http://www.drmedford.com)



## Residential Roofing Specialists

No-Charge Estimates • Reroof • Repairs • Inspections

**817-738-1756**

## Dr. Kory S. Cummings

### THERAPEUTIC OPTOMETRIST

1101 West Rosedale  
(S.E. corner Rosedale & Henderson)

**817-294-4834**

[www.weloveyoureyes.com](http://www.weloveyoureyes.com)



## THE LAW OFFICE of JASON AMON, P.C.



General Civil Practice

Estate Planning

Business Solutions

Adoption

Guardianship



1244 COLLEGE AVENUE  
FORT WORTH, TEXAS 76104  
(T) 817-332-1116  
[INFO@JASONAMON.COM](mailto:INFO@JASONAMON.COM)

## MH Traffic Committee meeting

The Mistletoe Heights traffic committee will meet 6:30 p.m. Tuesday Feb. 7 in the offices at Fort Worth South, 1606 Mistletoe Blvd. at Eighth Avenue.

The committee will discuss a proposal being floated by the Berkeley neighborhood association and others to put Forest Park Boulevard on a "road diet" between Rosedale and Park Hill.

The road diet would narrow Forest Park to one car lane in either direction, plus a center turn lane, and bike lanes on both sides of the road. The Berkeley association believes the road diet would slow traffic on Forest Park, reduce the numbers of accidents, force non-resident commuters using Forest Park as cut-through to go elsewhere, and better link our neighborhoods to the city's bike trail network.

The Berkeley Place Association recently voted to adopt this resolution, and is asking the Mistletoe Heights association to consider it:

"The BPA stands in favor of the implementation of a "road diet" on Forest Park Boulevard. Specifically, the BPA asks the City of Fort Worth to reduce Forest Park Boulevard from a 4-lane street down to a 2-lane boulevard, with a central turn lane and north-bound and southbound dedicated bike lanes on the sides. The road diet should be accomplished by re-striping Forest Park Boulevard from Park Hill on the southern end to Rosedale on the northern end. The BPA also requests that the City of Fort Worth include safe crossing striping and signage where appropriate along the boulevard, including but not limited to the installation of warnings at the crossing points for Tillery Park."

This item is also scheduled for discussion at the Mistletoe Heights association's regularly scheduled quarterly meeting, 7 p.m. Tuesday Feb. 21 at Jeff Davis' home, 2325 Mistletoe Drive.

Please contact Scott Nishimura, Mistletoe Heights traffic committee chairman, 817-913-8671, [julieandscott91@att.net](mailto:julieandscott91@att.net), for more info or to join the traffic committee.

## The Train Station

The proposed site of the train station, complete with bus bays, has moved yet again. Originally, it was north of Rosedale street, east of the new Midtown complex.

Now there is discussion of putting the train station one block further south, just south of Mistletoe Blvd, east of Jerome, extremely close to residential property. MHA decided in 2007 that the proposal of the train station being south of Rosedale, running along Newby Park, would not be in the best interest of the park or our residential neighborhood.

This topic needs to be discussed and openly pursued by our neighborhood, especially by the 2200 and 2100 block homeowners of our neighborhood. Traffic, noise, property values, and quality of life issues are at stake here.

## Salt Water Disposal Wells Meetings

Gas drilling has increased the need for saltwater disposal wells. A moratorium against saltwater disposal wells ends in April. Without these wells, gas drilling companies must truck millions of gallons of water outside the city as a byproduct of the hydraulic fracturing, or fracking, process. Heavy truck traffic causes wear and tear on city streets. Come, learn about the practice and give your input. We value your opinion.

Each meeting will include a presentation by city staff on saltwater disposal, comments by a panel made up of industry members and residents, and a moderated discussion between the panel and the audience.

All meetings are 7-9 p.m. There are three in February:

**Feb. 2** Lost Creek Country Club, 4101 Lost Creek Blvd., Aledo

**Feb. 9** TCC Opportunity Center, 5901 Fitzhugh Ave.

**Feb. 23** City Council Chambers, 1000 Throckmorton St.

Information: [www.FortWorthTexas.gov/gaswells/saltwater](http://www.FortWorthTexas.gov/gaswells/saltwater)  
817-392-2851

Following the public meetings, the City Council will be briefed on the results, and a public hearing is scheduled for March 6, 2012, at a City Council meeting.





## 2012 PEDESTRIAN PLAN COMMUNITY MEETINGS

**We need your help to shape the future of Fort Worth**

Attend a Walk! Fort Worth meeting and tell us:

**WHY** you like to walk in Cowtown

**HOW** the City can make Fort Worth more friendly for pedestrians

**WHERE** the City should make pedestrian improvements

Your input will be used to finalize the Walk! Fort Worth Pedestrian Plan.

| Location                    | Date        | Time    | Address                        | Bus Route |
|-----------------------------|-------------|---------|--------------------------------|-----------|
| Northwest Regional Library  | January 25  | 6:30 PM | 6228 Crystal Lake Drive        |           |
| TCC Opportunity Center      | January 26  | 6:30 PM | 5901 Fitzhugh Avenue Room 1300 | 9         |
| Greenbriar Community Center | January 30  | 6:30 PM | 5200 Hemphill Street           | 72*       |
| Ella Mae Shamblee Library   | February 6  | 6:30 PM | 1062 Evans Avenue              | 4         |
| Southwest Community Center  | February 8  | 6:30 PM | 6300 Welch Ave                 | 66        |
| Summerglenn Library         | February 9  | 6:30 PM | 4205 Basswood Blvd.            | 62E       |
| Diamond Hill/Jarvis Library | February 13 | 6:30 PM | 1300 N. E. 35th St.            | 1C        |
| Southwest Regional Library  | February 16 | 6:30 PM | 4001 Library Lane              | 25        |

\*Must request stop at Greenbriar Community Center

For more information, contact Julia McCleary at 817-392-2593 or visit [www.fortworthtexas.gov/walkFW](http://www.fortworthtexas.gov/walkFW)

These facilities are wheelchair accessible. For accommodations or sign interpretive services, please call Julia McCleary at 817-392-2593 48 hours in advance.



## Lily B. Clayton Elementary Invites You To Join Our Kindergarten Meet and Greet

Prospective Kindergarten Students and their parents are welcome

Meet our Principal and Assistant Principal | Meet our Kindergarten Teachers | Meet other Parents | Ask Questions | Receive Informational Packet | Tour Lily B. Clayton

**Thursday, February 9th, 2012**

1:30 – 3:00 pm

Lily B. Clayton Auditorium, 2000 Park Place

Questions? Contact Jennifer Hove at 817-676-6338 or [jenniferhob65@hotmail.com](mailto:jenniferhob65@hotmail.com).

## Neuter Scooter for a Nickel

This is as cheap as it gets, males only. You will need to pre-pay and make an appointment. Neuter Scooter will be held on February 12 and 13, 2012. Any Male cat can be neutered for just a nickel. NO FEMALES, FERAL OR CRYPTORCHID. Any male cats that are dropped off and later find out that it is a female or cryptorchid will not be done. The cat(s) must be current on vaccinations, if proof is not provided, then HSNT will vaccinate the cat(s) for \$14.95, making the total \$15.00. This will only include the Rabies and Distemper. Feline Leukemia vaccines or City Tags will have to be done at your own vet. If they are current we will need a copy of current vaccinations.

To make an appointment, you must come in person to the Receiving Lobby or the Surgery Center to pre-pay and fill out the paper work. Let them know if you will need a pet carrier.

<http://www.hsnt.org/NeuterScooter.php>



Associates  
of Internal  
Medicine

AIM for your health

Preventive Health Screenings  
(Well Man and Well Woman Exams)

Ages 14 and up

Diabetes

Weight Loss

High Cholesterol

Osteopathic Manipulative Treatment

High Blood Pressure

Heart Disease

Sick Visits

Inpatient Hospital Care



Pavani Bellary, DO



Niraj Mehta, DO



Morvarid Rezaie, DO

Our Board certified physicians are home grown right here in Fort Worth. They graduated from University of North Texas Health Science Center-TCOM and trained at Plaza Medical Center of Fort Worth. Now, our physicians want to take care of you - right here in your own neighborhood.

2260 College Avenue, Fort Worth, TX 76110

**TEL** 817-870-DOCS (3627)

**FAX** 817-870-3636

[www.associatesofinternalmedicine.com](http://www.associatesofinternalmedicine.com)

# Free neighborhood classified ads

**TAX PREPARATION.** Jeri Jo Blackmon, former IRS Agent and current Enrolled Agent licensed by the IRS will prepare and e-file your individual or business tax returns. Accounting services are also offered for small- to medium-size businesses. Contact Jeri Jo Blackmon at 817-923-4393 or email [JeriJo@charter.net](mailto:JeriJo@charter.net). 1408 Mistletoe Drive.  
\*\*\*\*\*

**TUTOR, K-3rd grade.** Caring, encouraging, experienced (12 years) certified elementary school teacher is offering tutoring. Contact Kathy Jo Rogers at 817.688.0905 or [kathyjorogers@sbcglobal.net](mailto:kathyjorogers@sbcglobal.net).  
\*\*\*\*\*

**EXPERIENCED BABYSITTER/NANNY/ CHILDCARE PROFESSIONAL.** My name is Britney Owens and I live in the Mistletoe Heights Neighborhood. I have 8 years of experience in high end quality childcare and I am seeking to help you with your family's needs for a babysitter! I bring toys and it allows me to be very hands on and interactive when doing developmentally appropriate activities with children. I've had a variety of experiences. Currently I am working for Cooks Kids Place Childcare and a Nanny Agency where I have assisted Pro-Athletes Families. I would love to help you as well. Please call me at 817-253-4734 or email [britneyn.owens@yahoo.com](mailto:britneyn.owens@yahoo.com) to let me know if I can help you!  
\*\*\*\*\*

**HARPIST:** Sally Sledge ministers on the harp as a worshiper, psalmist and vocalist. She has recorded two CDs: "Return to Your Rest" and "Cherished Times". She is available to play for home groups, church events, Bible studies, weddings, funerals, dinner parties or any special occasion. For more information and song samples, you may access her web site at [www.sallysledge.com](http://www.sallysledge.com).  
\*\*\*\*\*

**MISTLETOE HEIGHTS PET SITTERS** is now booking for your vacation, or any other time. References available on request. [www.mistletoeheightspetsitters.com](http://www.mistletoeheightspetsitters.com) or 817-247-2870  
\*\*\*\*\*

**PIANO LESSONS** for beginners and intermediates. Mary Smith, 2300 W. Magnolia Ave. 817-927-8876.  
\*\*\*\*\*

**ESTATE SALE SERVICES - Estate Sales & Appraisals** Experienced, reliable estate sales in and out of Mistletoe Heights since 1992. Certified Appraiser, International Society of Appraisers. Appraisals for insurance, estate evaluations, donations; whatever your needs. Contact: Terri Ellis, Mistletoe Estate Sales, 817-926-9424 or email [tquilts@mac.com](mailto:tquilts@mac.com)  
\*\*\*\*\*

**MEMORY QUILTS:** Do you have more t-shirts than you can wear? I have a solution! Turn them into memory quilts. Call Jill at 817-217-4497 or visit [www.sew-what-quilts.com](http://www.sew-what-quilts.com)  
\*\*\*\*\*

**ADULT KEYBOARD CLASSES ~ Recreational Music-Making** in Mistletoe Heights. Wish you had stuck with piano lessons as a kid? Would you like to play some familiar tunes? Put chords with them? Play in various keys? Enjoy these fun-filled, low-stress, 8-week keyboard classes. For more info, contact Carol Spencer ~ 817.927.3240 ~ [carolinefw@sbcglobal.net](mailto:carolinefw@sbcglobal.net) or go to [www.MistletoeMusik.com](http://www.MistletoeMusik.com).  
\*\*\*\*\*

**GOING OUT OF TOWN?** Call Riley Gensheimer. Neighborhood teenager available for pet sitting and plant watering. Riley Gensheimer, (age 15) of 2337 West Magnolia, is available to take care of your home while you are away. I will bring in the mail, water plants and feed your pets for \$10-\$15 a day. Call 817-991-8214  
\*\*\*\*\*

**LEARN TO SWIM LESSONS -** With emphasis on Olympic strokes. Contact: Richard Sybesma, Head Swim Coach TCU Box 297600, Fort Worth TX 76129 817-257-5646 or 817-257-7963  
\*\*\*\*\*

**COMPLETE PROPERTY RENOVATION:** Demolition, clean-up, specializing in historic home renovations, painting, wallpaper. Contact Jeff at 817-988-7113.

## LIKE A GOOD NEIGHBOR, STATE FARM IS THERE.®



For your insurance and financial needs, see State Farm Agent:

**Jason Needham, Agent, ChFC CLU**  
1708 8th Avenue  
Fort Worth, TX 76110-1348  
Bus: 817-821-4111 Toll Free: 866-945-2766  
[jason.needham.nv00@statefarm.com](mailto:jason.needham.nv00@statefarm.com)

LIKE A GOOD NEIGHBOR



STATE FARM IS THERE.®

Providing Insurance and Financial Services

[statefarm.com](http://statefarm.com)®

State Farm Insurance Companies • Home Offices: Bloomington, Illinois

P025038

9/05

## Old Neighborhood Grill

*A Simple Pleasure*

**1633 Park Place**  
**Between 8th Ave & Forest Park**  
**817-923-2282**  
**Open 7a - 9p • Mon - Sat**



# Free neighborhood classified ads

\*\*\*\*\*

SALE ONE DAY ONLY Feb. 19th, Sunday, 11 a.m.-3 p.m.  
Export surplus from India. Very good prices. Long ethnic skirts - \$10,  
Scarves \$5, Jewelry bangles & earrings \$2, Handloomed shawls/throws  
\$15, handblocked quilts, European tops and more. Call if you have any  
questions - Janis 817-923-7411. 2218 Mistletoe Blvd.

\*\*\*\*\*

HELP THE NIGHT SHELTER; If you are interested in participating in or  
donating to The Presbyterian Night Shelter's Operation Move Out, please  
contact Heather White at 817-632-7415 or hwhite@pns-tc.org

\*\*\*\*\*

## VINTAGE SALES

Estate sales and appraisals in Fort Worth since 1992. Call Anne Bourland  
for information. 817-924-5959

\*\*\*\*\*

## PET PORTRAITS:

Melissa Kahout's work is a perfect gift for the pet lover in your life. Great  
for graduations, anniversaries, birthdays, weddings or just because you  
love your pet. You can contact Melissa @817-924-7063  
or www.mkohouthorseportraits.com

## Mistletoe Heights Association Income & Expenses Prev Year Comparison January through December 2011

|                                 | Jan - Dec 11     | Jan - Dec 10     |
|---------------------------------|------------------|------------------|
| <b>Income</b>                   |                  |                  |
| Advertising Income - Newsletter | 6,627.00         | 5,399.00         |
| Central Market Bags             | 102.00           | 103.00           |
| Christmas Cards                 | 37.00            | 0.00             |
| Dues Donations                  | 7,130.00         | 7,284.00         |
| For Robert Needham (Postman)    | 0.00             | 210.00           |
| Interest Income                 | 4.55             | 5.24             |
| <b>Total Income</b>             | <b>13,900.55</b> | <b>13,001.24</b> |
| <b>Expense</b>                  |                  |                  |
| Bank Charges                    | 7.97             | 15.67            |
| Christmas - Street Lite Decor   | 490.53           | 284.69           |
| Christmas - Triangle            | 651.25           | 0.00             |
| Easter Egg Hunt                 | 271.29           | 188.03           |
| Flag Program - Triangle         | 120.00           | 120.00           |
| Garage Sale Expenses            | 0.00             | 83.39            |
| July 4th Celebration            | 0.00             | 647.64           |
| Lily B. Clayton                 | 250.00           | 0.00             |
| Maintenance - Newby, Berm, etc. | 890.54           | 22.43            |
| MHA Entrance                    | 1,151.83         | 188.89           |
| Neighborhood Postman            | 0.00             | 250.00           |
| Newsletter Expenses             | 4,279.76         | 5,165.95         |
| Water Expense - Berm            | 0.00             | 893.23           |
| Water Expense - Newby           | 985.77           | 629.41           |
| Website Expense                 | 95.25            | 95.25            |
| Welcome Baskets                 | 279.50           | 238.86           |
| <b>Total Expense</b>            | <b>9,473.69</b>  | <b>8,823.44</b>  |
| <b>Net Income</b>               | <b>4,426.86</b>  | <b>4,177.80</b>  |

Bank Balance at 12/31/11 - \$20,107.69

## Retirement May Be Far Off, But the April 17 Deadline for IRA Contributions Isn't.

You have only so many years to prepare for retirement. That's why contributing to your Individual Retirement Account (IRA) is so important. Fortunately, you still have time to maximize your 2011 IRA contribution before the April 17 deadline.

By contributing now, your retirement savings can have more opportunity to grow. Even if you already have an IRA elsewhere, it's easy to transfer it to an Edward Jones IRA and begin receiving the face-to-face guidance you deserve.

To learn more about the advantages of an Edward Jones IRA, call or visit today.



**Bruce C Border, CFP®**  
Financial Advisor

2453 Forest Park Boulevard  
Ft Worth, TX 76110  
817-926-8056

www.edwardjones.com Member SIPC

**Edward Jones**  
MAKING SENSE OF INVESTING

## I love my "gray Taco Bell"...

The gray mission-style bungalow on Harrison Avenue has been my home for almost 30 years. And Mistletoe Heights has always meant much more to me than just a convenient place to live.

I'm already your neighbor, I'd like to be your friend—and Realtor®.

While I may not have a drive-thru window, no one will work harder for you. After all, you know where I live!



"I am truly your neighborhood Realtor®  
—do call me for your real estate needs"

Gaye Reed



(817) 921-8164  
gaye.reed@coldwellbanker.com



# Don't blow grass clippings, debris into the street

Blowing or leaving grass clippings and other debris in the street during yard maintenance doesn't just look bad, it's ILLEGAL.

Although the act of using a leaf blower isn't a violation, the act of blowing or leaving yard trimmings and similar material into the street is a violation. The City considers these acts to be a criminal offense; therefore code and police officers can issue citations to mowing contractors, lawn maintenance companies and homeowners who fail to properly collect and dispose of this material.

Fines for blowing or leaving grass clippings in the street can run as high as \$2000 per offense.

Besides being a criminal violation, grass clippings can also clog the City's storm water drain system. When the drains are clogged with clippings and debris, rain and storm water can back up and flood homes and property. Also, rain and storm water are not cleaned or treated, so when storm drains are used as a dumping ground, the results can be disastrous—and smelly.

So what's the best place for yard trimmings?

- Sweep, collect and bag clippings and leaves.
- Blow grass clippings back onto the lawn, where they become a mulch and natural fertilizer.
- Rake or blow leaves into a compost pile, where they can decompose without odor.

If you use leaf blowers, side-discharging mowers or edgers for your lawn maintenance company, please follow these recommendations or remind your crew NOT to blow grass clippings and leaves into the street or down storm drain inlets — it could save you \$2000!

If you would like to report a violation or if you have questions about leaves and grass clippings being left in the street call 817-392-1234.

## How to recycle those old electronics

Now that Christmas has passed and you're enjoying that new electronic toy, don't throw the old cell phone into the trash or kick the computer to the curb.

Most electronics contain hazardous or toxic materials that cause environmental problems when they are buried in a landfill. When eWaste is recycled, valuable materials can be recovered from old electronics, and these materials can be used to make new products.

All computer manufacturers (as required by Texas law), as well as many TV and cell phone manufacturers, offer some kind of take-back program or sponsor recycling events. Many electronics retailers also offer trade-in option for old equipment when you purchase new items.

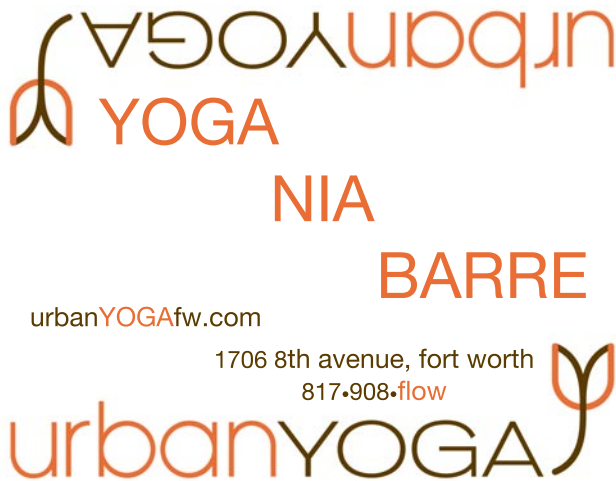
Fort Worth residents can take unwanted e-waste to one of three drop-off stations for recycling. The drop-off stations accept computer equipment, televisions, cell phones, printers and many other electronics items that will be recycled. The locations:

Brennan Drop-off Station, 2400 Brennan Ave.

Southeast Drop-off Station, 5150 Martin Luther King Freeway

Old Hemphill Road Drop-off Station, 6260 Old Hemphill Road.

Drop-off stations are open 8 a.m.-6 p.m. Monday-Friday and 8 a.m.-5 p.m. Saturday, they are closed Sunday.



## Banking Made Easy

Corner of Hemphill and Magnolia  
817-927-7730

**SOUTHSIDE BANK**

Member FDIC

www.southside.com



**OUR NEW HURST LOCATION  
IS NOW OPEN!**

Find the **LARGEST APPLIANCE SELECTION** in the State of Texas!  
**HUNDREDS OF APPLIANCES Under One Roof!**  
**The LOWEST PRICES in the Metroplex!**

Now with **THREE LOCATIONS** to meet all your appliance needs:

**Our Newest Location!**

3401 Pioneer Pkwy.  
Arlington, TX

**840 Airport Frwy**  
**Hurst, TX**

1500 I-20 East  
Arlington, TX

817-299-2800

www.txappliance.com





## Congratulations, Irene!

When the Dallas Paleo Society was started in 1984, the goal was "for the purpose of promoting interest in and the knowledge of paleontology". There are many ways throughout our past that the DPS has worked to accomplish this. Monthly meetings and lectures, workshops, field trips, Symposiums, individuals doing presentations to various groups and many, many more activities. As a group we have done some really special things and impacted many people of all ages.

Sometimes, however, an individual who makes a significant contribution to the science of paleontology on their own has more of an impact than we do as a group. When this individual has done this over the course of a lifetime, the DPS is pleased to award them our highest honor: the "Lifetime Achievement Award".

Traditionally, this award is not given to a "professional" paleontologist, but as we all know from spending time with our group, you don't need to be a pro to be knowledgeable, helpful and able to share your enthusiasm about paleontology. This is not an award that is given without much thought. In 27 years, it had only been awarded three times. The first was to one of our founding fathers, Bill Lowe, then to the late, great Ken Smith and the last was presented to one of the Society's backbones, Roger Farish.

Last month it was my great pleasure and honor to announce our latest recipient: **Irene Stemple**

It is unlikely anyone in our group will ever match Irene's total of field trips lead, people talked to, and have more of an impact on children than she has in over 40 years as an educator, volunteer and generally being a great person. Working with the Fort Worth Museum, the DPS, and many other avenues, she has gone over and above what one person should be able to do to spread her love of science, especially paleontology. She is a treasure and we are all enriched as individuals and as a group by her presence and accomplishments.

## Julia's Housekeeping



Local, reliable, hardworking housekeeper with excellent local references wants to clean your Mistletoe Height's home.

I'm ready to make your home spotless.

Flexible times available.

Call for a cleaning estimate:

**682-433-8825**

## Judy Garza Plumbing

Reasonable Rates and Senior Discounts

Licensed and Insured -- M14707

**817-495-3406**

After hours and weekend service available

## Ben Taylor Optical

*Style • Service • Savings*

1101 West Rosedale

**817-870-2061**

[www.BenTaylorOptical.com](http://www.BenTaylorOptical.com)



**Jeff Davis**  
Chairman/Fort Worth Division

REPUBLIC TITLE OF FORT WORTH

420 Throckmorton  
Suite 640  
Fort Worth, Texas 76102  
Main (817) 877-1481  
Metro (972) 445-5044  
Direct (817) 806-1301  
Fax (817) 810-1051

A DIVISION OF  
REPUBLIC TITLE OF TEXAS, INC.

Email: [jeffdavis@republictitle.com](mailto:jeffdavis@republictitle.com)

## Bob Bourland

Frank Kent Honda

3451 W. Loop 820 South



**817.696.4144 Direct, 817.266.7693 Cell**

[rd.bourland@yahoo.com](mailto:rd.bourland@yahoo.com)

# Redistricting: Draw your own map and be heard

The City of Fort Worth is kicking off the next phase of Redistricting effort. As you know, Fort Worth has experienced tremendous growth over the past decade. Growth in some areas of the city has outpaced others, and it is necessary to redraw district boundaries so that each City Council District will comply with the one person/one vote standard.

The 2010 Census revealed Fort Worth's population grew by more than 200,000 people to make it the fastest-growing large city in the United States.

The population boom was concentrated largely in three districts — District 2 with 121 percent growth, and districts 6 and 7, both with roughly 50 percent growth.

The U.S. Constitution requires that election districts have approximately equal populations. Due to growth, our districts are unequal and the City must adopt new City Council district boundaries.

Beginning February 1, 2012, you will be able to create your own City Council district boundary map using an online map tool on the City's website. Using this software, you will be able to draw district boundaries that address criteria such as population, race/ethnicity, and neighborhood boundaries.

We encourage you to prepare and submit a map for consideration. The map tool is located at: [www.FortWorthTexas.gov/redistricting](http://www.FortWorthTexas.gov/redistricting).

If you need help getting started, there are several options available to you:

- Watch the online tutorials on our website
- Attend an upcoming public meeting/training
- Visit a hands on technical assistance training at the Central Library computer lab
- Request a training session for your neighborhood association or community group



## **Public Meetings/Training:** City staff will explain redistricting and give a software demonstration

- 6:30 p.m. Monday, February 6, Christ Chapel Bible Church, 3740 Birchman
- 6:30 p.m. Monday, February 13, TCC Opportunity Center, 5901 Fitzhugh
- 6:30 p.m. Wednesday, February 15, Northwest Library, 6228 Crystal Lake
- 6:30 p.m. Thursday, February 16, Highland Hills Community Center, 1600 Glasgow
- 6:30 p.m. Thursday, February 16, Diamond Hill Community Center, 1701 N.E. 36th
- 6:30 p.m. Monday, February 20, Travis Avenue Baptist Church, South Complex, 717 W. Berry St
- 6:30 p.m. Thursday, February 23, Heritage Church of Christ, 4201 Heritage Trace
- 6:30 p.m. Tuesday, February 28, Southwest Regional Library, 4001 Library Ln

## **Software Technical Assistance Workshops:** City staff will be on hand to help you create your own city council district map.

- 10 a.m.-2 p.m. Saturday, February 11, Central Library Computer Lab, 500 W. Third
- 10 a.m.-2 p.m. Saturday, February 18, Central Library Computer Lab, 500 W. Third

Call 817-392-2600 or email [redistricting@FortWorthTexas.gov](mailto:redistricting@FortWorthTexas.gov). Map submissions and/or comments are due by March 30, 2012.

The City Council will adopt a redistricting plan in the summer of 2012 in preparation for the May 2013 City Council election.

## My Tax Dollars At Work' provides a glimpse into fund allocation for city services

Ever wonder how your tax dollars are being spent? A new online service offers residents a way to see who is getting their property tax dollars, and how those funds are allocated by the city.

My Tax Dollars At Work is a service on the city's website that provides a breakdown of residents' property taxes, including a breakdown of which entities receive portions of those property taxes.

Residents enter the latest appraised value of their home, whether or not they have a homestead exemption, and which school district their home is in, and click the "calculate" button. If a resident is unsure of that value number, there is a link on the web page that connects with the Tarrant Appraisal District website, where that information is available.

Once the numbers are entered, the result is a breakdown of the total amount of property taxes they pay, plus how much goes to the different county, city and ISD entities.

In addition, the program breaks down how much of their tax dollars are spent on city services — public safety, community services, infrastructure services, etc.

The goal, Budget Officer Horatio Porter said, is transparency — a clearer picture of where tax dollars are going.

"I think this is a great tool," Mayor Betsy Price said. "One of the main questions we get asked by citizens is, 'What are you doing with my tax dollars?' This really helps explain that."

## **Ad Manager Needed**

The Mistletoe Express is looking for a new Ad Manager. Kelley Reece has just stepped down as our Ad Manager after doing a fantastic job for the last several years. We should all thank Kelley Reece for all of his hard work and for helping make the newsletter a revenue source for our neighborhood. Our little newsletter has become a vital part of creating the means to revitalize our neighborhood because of Kelley's dedication. If you run into him, you should give him a pat on the back for doing such a great job.

The Ad manager position is an important one, helping local business keep in touch with the people who live right next door. As the Ad Manager you will support our local economy and help Mistletoe Heights remain on a constant upswing.

Won't you step up and volunteer for this essential neighborhood position? Please contact Marjorie Day, 817-914-8057, or send an email to [perrellim@aol.com](mailto:perrellim@aol.com).



## NEIGHBORHOOD WATCH

# The day our first neighborhood Christmas Tree went up



## Submit your neighborhood photos to the newsletter

We love to see what's going on in Mistletoe Heights. If you capture an image of neighbors together or something that needs to be addressed or just the prettiest landscape design you've ever see, send it to us and we'll try to get it in the newsletter!

Please send to Newsletter Editor Marjorie Day at [perrellim@aol.com](mailto:perrellim@aol.com). Give her a call if you have (gasp!) actual photographs!

## Dec/January Crimes

Four crimes on the west side of Mistletoe Heights. One on the east side.

Missing in Action: East side NPO

■ 12/08/2011

1100 Block of Clara Street  
Burglary, Breaking and Entering

■ 12/14/2011

1100 Block of Clara Street  
Theft from motor vehicle

■ 12/15/2011

2300 Block of Mistletoe Drive  
Theft from Motor Vehicle

■ 1/09/2012

1100 Forest Park Blvd.  
Burglary, Breaking and Entering

■ 1/10/2012

2100 Block of Edwin Street  
Burglary, Breaking and Entering

## Free Clinics at Calloway's Nursery in Fort Worth

### Green, Weed Free Grass -

Learn lawn maintenance this Spring. Basic workshop for the new Texas homeowner. Basic Path and Sustainable Path. February 4, 10:15 a.m.

### Living Bouquets -

Give your Valentine a living flower arrangement this year! The information in this workshop teaches ways to design your own container garden using exotic blooms and foliage. Learn about 'Maverick' Geraniums for gardens and containers. February 11, 10:15 a.m.

### Earth-Kind® Gardening

Create a sustainable landscape! Earth-Kind Landscaping uses research-proven techniques to provide maximum garden and landscape enjoyment. February 18, 10:15 AM

### Waterwise Gardening

Conserve Water. Plant and maintain a landscape in drought conditions. Proper plant selection, design, soil preparation, maintenance. February 25, 10:15 AM

**PARK PLACE  
PHARMACY**

Business Hours:

Monday - Friday

9:00am to 6:00pm

Closed Weekends  
& Holidays

Craig Nicholson, RPh

Monique Nicholson, RPh

Your Neighborhood Pharmacy

Phone: 817-924-9292

Fax: 817-924-9264

1601 Park Place Ave, Suite B  
Fort Worth, TX 76110-1303