



Mistletoe Express

www.mistletoeheights.com

March 2011

Mistletoe Heights Neighborhood Garage Sale

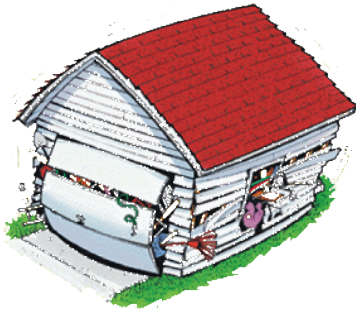
April 16

Rain date: April 23

How to Obtain a Garage Sale Permit

Garage sale permits can be obtained online at

Fortworthgov.org or by calling 817-392-2222 or by applying in-person by visiting the Development Department Permit Desk, 1000 Throckmorton, Fort Worth, Texas.



Why is a Garage Sale Permit Needed?

Code Compliance Department, 817-871-6320, regulates garage sales. Garage sales are permitted within the city limits of Fort Worth under the following rules:

- There are not more than two sales, in number, on the same premises in any one calendar year.
- The sales are held by a person who does not hold himself out as engaging in, or does not habitually engage in, the business of selling such property at retail
- The sale shall be confined to the garage, patio and/or yard of the premises. No new merchandise acquired solely for the purpose of resale on the premises shall be sold at such occasional sale.
- The duration of each such sale shall not exceed three (3) consecutive calendar days.

Estate Sales are treated the same as garage sales

Garage Sale Signs

Only one (1) sign shall be permitted, not to exceed two square feet in area, upon the premises where and when the sale is taking place. All other signs relating to the sale, either on or off the premises, shall be violations of this ordinance.

How Much Does a Garage Sale Permit Cost?

There is no fee to obtain a garage sale permit.

GARDENING

Harmony in the landscape

By Marjorie Day

Creating a harmonious landscape with native and adapted plants to suit your historic home and your personal tastes is a wonderfully creative experience. Gardening is an investment in your neighborhood and in your own life at home.

Consider your home's architectural style and details, try a new historic exterior color scheme on your home to go along with planned changes in the garden. Remember to create the garden to suit the existing home and terrain.

Use colors in the garden like you would in your home. Think on how you can connect your home to the landscape and connect these two elements to neighboring homes and landscapes.

Choose a simple color palate of plants and flowers and use the variety of textures, forms and the overall sizes of your plant selections to be the garden's variations. It's easier to add than to subtract. Repeating colors and shapes in the landscape, will create unity and balance to the garden.

Use focal points to guide the eye to interesting features in the garden.

Art, pots, wind chimes, and outdoor furnishings should all work together. Less is best, so be thoughtful about your color and style choices. Look for items that are simple in form, and connect to your overall garden and home's style.

You can hire a local landscape
More on Page 6



Photo by Rodger Mallison

Inside This Issue

Page 2 - New neighbors
Page 3 - Yard of the month
Page 4 - Free mulch, Great American Clean Up

Page 5 - Southwest Parkway update
Page 6 - MHA meeting minutes
Page 7 - Classified ads
Page 8 - Treasurer's Report
Page 9 - Tree tip
Page 10 - Helpful numbers

Happy St. Patrick's Day!

March 17



NEW IN FORT WORTH!

CROSSFIT IRON HORSE

What is CrossFit?

CrossFit is a core strength and conditioning program that leads to superior general physical preparedness.

- **Constantly Varied (Broad, General, & Inclusive)**
- **Functional Movements (Natural core to extremity movements)**
- **High Intensity (You will SWEAT!)**

Check us out at www.crossfitironhorse.com
or try us out @ 9am Saturday (open to the public)

"It's like having your own Personal Trainer for every workout."

**1907 Windsor Place
Fort Worth, TX 76110
817-922-8200**

info@crossfitironhorse.com

Next door to Travis Lutter Jiu-Jitsu

New folks, new friends join our neighborhood

Welcoming baskets were delivered in February to three new households. One to **Dave Hallum** and **Gail Lee**, who've moved in on Buck Avenue and two on Clara, one to **Amy Beussink** and another to **Sally Sledge**.

A special thanks to you folks out there for passing on who's new in the neighborhood so we can extend a friendly Mistletoe Heights hello. We appreciate your being our eyes and ears. (Also, a reminder that along with the new people's names and addresses, it's extra helpful when we have a phone number.)

Please contact either Meralen Tyson (meralen@sbcglobal.net) or Beth Krugler (beth@bethkrugler.com) with that information, and you can consider it done!



Get on the Mistletoe Heights email list

To subscribe to the Mistletoe Heights Residents mailing list, go to www.mistletoeheights.com, click on "Email List" and look for the section "Subscribing to Residents". Enter your email address and name and click "Subscribe". Be aware that you may need to add residents-bounces@mistletoeheights.com to your address book so the incoming emails are not treated as spam. We're still missing lots of neighbors on the email list. If you have any questions or concerns about the email list, contact moderator@mistletoeheights.com.

Ruffinos

RESTAURANT



Royal Wedding Watch
Friday, April 29th 3:00 AM
\$50 per person
Reservations Required

2455 Forest Park Boulevard

817-923-0522

Retirement May Be Far Off, But the April 18 Deadline for IRA Contributions Isn't.

You have only so many years to prepare for retirement. That's why contributing to your Individual Retirement Account (IRA) is so important. Fortunately, you still have time to maximize your 2010 IRA contribution before the April 18 deadline.

By contributing now, your retirement savings can have more opportunity to grow. Even if you already have an IRA elsewhere, it's easy to transfer it to an Edward Jones IRA and begin receiving the face-to-face guidance you deserve.

To learn more about the advantages of an Edward Jones IRA, call or visit today.



Bruce C Border, CFP®
Financial Advisor

2453 Forest Park Boulevard
Ft Worth, TX 76110
817-926-8056

www.edwardjones.com Member SIPC

Edward Jones
MAKING SENSE OF INVESTING



Yard of the month: 2300 Irwin St.

Yard of the Month for March is awarded to Trudy and John Stafford at 2300 Irwin Street. They raised their family in Houston, then moved to Pittsburg briefly before moving to Fort Worth in April 2010. The Staffords have meticulously maintained the yard.

The Staffords' garden is a beautiful composition of several flower beds lining the front walk and driveway of varying in height, color and texture. The stone path lined with rows of tulips, purple hyacinth, and liriopie welcome you to enter the property from the street. From there the winding front walkway warmly welcomes you thorough the meandering path lined with nandina, Indian hawthorne, and Chinese fringe plants to set foot on the couples charming front porch. The garden is accented with dusty miller throughout, and all the beds are neatly edged with Liriopie. Crepe Myrtles rise from either side of the walkway and a red oak, among several mature trees on the property, provides much needed shade form the Texas sun for the street and sidewalk. The summer blooming Wisteria trails the fence so be sure and stop by for a second look.

Trudy and John will receive a generous gift certificate from Calloway's Nursery in gratitude for their care and pride in their home.

Garden Tip of the Month

- Late March and early April is a good time to transplant shrubs and trees. As soon as the soil is workable, but before buds have swelled or broken open, you can move shrubs and trees.
- Fertilize shrubs and trees if this wasn't done in February. Use an acid type rhododendron fertilizer to feed evergreens, conifers, broad leaf evergreens, rhododendrons, azaleas and camellias. Use an all-purpose fertilizer to feed roses and other deciduous trees and shrubs. If you use granular type fertilizers, be sure to water it in thoroughly.
- Finish pruning fruit trees this month - before the buds swell.

YOGA
NIA
PILATES
BARRE

urbanYOGAfw.com
1706 8th avenue, fort worth
817-908-flow

You're Invited!

Craig and Kathy Keesee, your neighbors in Mistletoe Heights since 1985, would like to extend an invitation to visit our newest showroom at

TEXAS APPLIANCE & Builders' Supply
1500 I-20 East, Arlington, TX 76018
817-299-2800 • www.txappliance.com

"Shop Where the Builders Shop"
1500 I-20 East - Arlington (exit Collins)
817-299-2800 www.txappliance.com

1633 Park Place
Fort Worth, Texas 76110

(817) 923-2282

Judy Garza Plumbing

Reasonable Rates and Senior Discounts
Licensed and Insured -- M14707

817-495-3406

After hours and weekend service available

wortharitas

Frozen drink machine rental
Margaritas, daiquiris, slushies and more

817-715-0680

www.wortharitas.com

sales@wortharitas.com

Dr. Kory S. Cummings

THERAPEUTIC OPTOMETRIST

1101 West Rosedale
(S.E. corner Rosedale & Henderson)

817-294-4834

www.weloveyoureyes.com



JS TILE AND REMODELING

- ◇ Historically Accurate Tile
- ◇ Advanced Mold-Proof Showers
- ◇ Stain-Proof Grouts
- ◇ Complete Kitchen and Bath Remodels
- ◇ Free Estimates and Great Prices



817.919.1223
www.jstile.com

Free mulch

Fort Worth Forestry strives to recycle all removed plant materials. Wood chip mulch and screened composted mulch are available free of charge to Fort Worth residents. Mulch can be obtained from the parking lot at Rolling Hills Park — between the soccer fields and Rolling Hills Tree Farm at 2525 Joe B. Rushing Road — or at the Cahoba Drive compost pickup, located under the 820 overpass at Cahoba Drive. For more information about the Compost Program, call the Trades Section at 817-871-7676.

Residents should bring sturdy bags or other containers, shovels and work gloves. Please remember to cover your load if using a pickup or trailer. Employees are not available to aid in bagging and loading of mulch.

Registration open for 2011 Cowtown Great American Cleanup

Join in the nation's single largest community improvement program and register for the 26th annual Cowtown Great American Cleanup, 9 a.m. to noon April 2.

Put a group together, pick a spot to cleanup and sign up online through the Keep Fort Worth Beautiful website. The first 3,000 volunteers registered by March 17 will receive a T-shirt, gloves and trash bags.

More than 4,700 volunteers collected 86,000 pounds of litter and debris in 2010, and organizers are hoping to top that this year.

Participants can choose their own spots to cleanup or choose a cleanup organized by Keep Fort Worth Beautiful:

Marine Creek Ranch 5403 Paloma Blanca

Hazel Harvey Peace Center 818 Missouri Ave.

As an added bonus, groups that complete the entire registration process online will be eligible for prizes, which will be given away at random.

If your group has more than 50 participants, call or e-mail Debbie Branch, 817-392-5151, for information about registration.

Bob Bourland

Frank Kent Honda
3451 W. Loop 820 South



HONDA

817.696.4144 Direct, 817.266.7693 Cell

rd.bourland@yahoo.com

Banking Made Easy

Corner of Hemphill and Magnolia
817-927-7730

SOUTHSIDE BANK

Member FDIC

www.southside.com

Southwest Parkway update

Construction work on the Southwest Parkway project requires lane closures on West Vickery Boulevard, which began in February. The southbound Hulen Street ramp to West Vickery also will be closed.

Crews are scheduled to close one lane in each direction on West Vickery Boulevard immediately west of Hulen Street. The lanes are expected to remain closed through May.



The closures are necessary so crews can relocate water and sanitary sewer main lines west of the Hulen Street Bridge in Union Pacific Railroad's Davidson Rail Yard.

Southwest Parkway is a 27.6-mile tollway that will extend from Fort Worth's Central Business District at I-30 through southwest Fort Worth to its southern Chisholm Trail extension at U.S. 67 in Cleburne. Proposed completion date is 2013.

To learn more, visit the North Texas Tollway Authority website at <http://ntta.org/>.

LIKE A GOOD NEIGHBOR, STATE FARM IS THERE.®



For your insurance and financial needs, see State Farm Agent:

Jason Needham, Agent, ChFC CLU
1708 8th Avenue
Fort Worth, TX 76110-1348
Bus: 817-921-4111 Toll Free: 866-945-2766
jason.needham.nv00@statefarm.com



LIKE A GOOD NEIGHBOR STATE FARM IS THERE.®

Providing Insurance and Financial Services

statefarm.com®

P026038

State Farm Insurance Companies • Home Offices: Bloomington, Illinois

9/05



Associates
of Internal
Medicine

AIM for your health

Preventive Health Screenings
(Well Man and Well Woman Exams)

Ages 14 and up

Diabetes

Weight Loss

High Cholesterol

Osteopathic Manipulative Treatment

High Blood Pressure

Heart Disease

Sick Visits

Inpatient Hospital Care



Preveni Bollery, DO



Niraj Mehta, DO



Marvarid Rozale, DO

Our Board certified physicians are home grown right here in Fort Worth. They graduated from University of North Texas Health Science Center-TCOM and trained at Plaza Medical Center of Fort Worth. Now, our physicians want to take care of you - right here in your own neighborhood.

2260 College Avenue, Fort Worth, TX 76110

TEL 817-870-DOCS (3627)

FAX 817-870-3636

www.associatesofinternalmedicine.com

Minutes from MH meeting

Taken by Mecca Givens

The quarterly meeting of the Mistletoe Heights Association convened at 7 p.m. February 15, 2011, at the residence of MHA President Jeff Davis.

Order of Business:

- Treasurer's report - It was noted that in the financial department MHNA is doing pretty good. A thank you was given to Marjorie Day for increasing the advertising. Keep the dues coming!
- Chesapeake - Drilling should begin across the river near Old South in June or July and last about 3 weeks.
- Midtown - Jeff Davis stated that ground breaking should be in March or April. The plan thus far is that the development will include a bank, two hotels, retail and medical.
- Crime - Crime was down after Christmas. It is very important for all neighbors to keep anything of value out of the vehicles to help deter burglaries.
- Historic Committee - The committee meets the first Monday of the month. All neighbors are welcome and encouraged to attend. Kathy McReynolds pointed out that

all historic rules are enforced by the HCLC and the MH Historic Committee has been put in place to try to help neighbors navigate this process.

- Sound Barrier - There was discussion regarding the type of sound barrier that will potentially be used on the berm to block noise from the new highway. Southwest Parkway will go just north of our neighborhood. It is important to the neighborhood as a whole that we have the best possible sound barriers. It was brought up that there is an alternative to the standard concrete barriers that TX Dot currently uses that are twice as effective at blocking sound, cost approximately 2/3 less, and have a much smaller impact on the environment.
- MH Directories - It is time to update the directory. We are looking for someone to volunteer time towards this project. Please contact Wendy Blanton if you would be willing to help in any capacity. It takes the help of neighbors to make things happen.
- Neighborhood Repairs - Steve McReynolds repaired a bench at the Triangle. Thank you Steve!

Gardening

From Page 1

designer to come to your home and create a landscape suited to your use and family. If you have the money, that's great. For the budget minded, Rome wasn't built in a day. Budget one element at a time with an overall plan in mind.

Draw attention to a focal point, art, fountains, pergolas, seating areas, path destinations, doorways, fire-pits, and garden pottery all make great focal points. Keep it simple. A focal point can be a reading chair in the garden painted in a bold color. Color is often used in focal points. Blues and greens recede a focal point while reds and yellows move a focal point forward. Have fun deciding.

Low maintenance means native and adapted plants, evergreens and lots of mulch. Check out Texassmartscape.com to see what plants work best.

Frame your garden with natural wood and stone fencing that reflects the architecture of your home, and or combine native shrubbery and trees both evergreen and deciduous. The idea of enclosure in a garden is an important element. Framing your garden creates intimacy and a backdrop for your plants.

Reduce lawn areas in favor of easily maintained plantings. Turf has a place but reduce your lawn to what makes sense. If you never use it, lose it in favor of native plants.

Vegetables

Find a place to grow some produce; even a pot with some tomatoes can really change your relationship to the garden. Growing your own organic produce is a money saver to be sure but who doesn't want to have a friend over to share a perfect homegrown tomato?

Noise pollution

Try a reel mower on a small yard, reduce the noise of your tools and add trees both evergreen and deciduous to your planting plans. Trees reduce the effect of noise pollution.

The Garden Process A garden should never be finished but changing and evolving just like we all do. Be patient.

PARK PLACE PHARMACY

Business Hours:
Monday - Friday
9:00am to 6:00pm

Closed Weekends
& Holidays

Craig Nicholson, RPh
Monique Nicholson, RPh

Your Neighborhood Pharmacy

Phone: 817-924-9292
Fax: 817-924-9264

1601 Park Place Ave, Suite B
Fort Worth, TX 76110-1303

Take a trip with us! We do all the planning!



Andrea Bellucci



Denisa Russell

Call or email today to get on
the email distribution list:

817.334.4616

andrea.bellucci@meridianbanktexas.com

2011 Bank Travel Itinerary

March 5 - Murder Mystery Dinner
(Southfork Hotel)

April 7 - Dividing the Estate (Dallas Theater)

April 29 - Canton, First Monday Trade Days

May 11 - Texas Rangers vs. Oakland A's

May 13 - Frankie Valli (Meyerson Symphony)

May 26 - 9 to 5 Musical (Music Hall Fair Park)



Meridian Bank Texas Member FDIC

100 Lexington Street, Ste. 100 | Fort Worth 76102
817.334.4600 | www.meridianbanktexas.com

Free Classified neighborhood ads

House Wanted - I recently moved to this area from Ohio and I am looking to buy a house in or near this neighborhood. I would love to restore a house in need of repair but will consider all options. Please call Allan @817-851-8223.

Mistletoe Heights Pet Sitters is now booking for your vacation, or any other time. References available on request.
www.mistletoeheightspetsitters.com or 817-247-2870

BABYSITTING, pet sitting, plant watering, lawn mowing, watch little ones in the pool? Hire the neighborhood kid: Jake Mallison (14), first-class Boy Scout, experienced with special needs kids, references available. House 817-924-7783 or cell 817-773-1471

Piano lessons for beginners and intermediates. Mary Smith, 2300 W. Magnolia Ave. 817-927-8876.

ESTATE SALE SERVICES - Estate Sales & Appraisals
Experienced, reliable estate sales in and out of Mistletoe Heights since 1992. Certified Appraiser, International Society of Appraisers. Appraisals for insurance, estate evaluations, donations; whatever your needs. Contact: Terri Ellis, Mistletoe Estate Sales, 817-926-9424 or email tqilts@mac.com

HELP THE NIGHT SHELTER; If you are interested in participating in or donating to The Presbyterian Night Shelter's Operation Move Out, please contact Heather White at 817-632-7415 or hwhite@pns-tc.org

MEMORY QUILTS: Do you have more t-shirts than you can wear? I have a solution! Turn them into memory quilts. Call Jill at 817-217-4497 or visit www.sew-what-quilts.com

EARLY CHILDHOOD MUSIC: Mistletoe Musikgarten
For babies, toddlers, pre-schoolers and their parents Taught by Carol Spencer, certified by the Early Childhood Music and Movement Association and the Gordon Institute for Music Learning MistletoeMusik.com. 817.927.3240 ~ carolingfw@sbcglobal.net

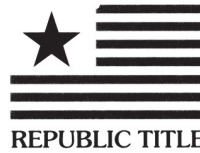
VINTAGE SALES
Estate sales and appraisals in Fort Worth since 1992. Call Anne Bourland for information. 817-924-5959

GOING OUT OF TOWN? Call Riley Gensheimer.
Neighborhood teenager available for pet sitting and plant watering. Riley Gensheimer (age 15) of 2337 West Magnolia is available to take care of your home while you are away. I will bring in the mail, water plants and feed your pets for \$10-\$15 a day. Call 817-991-8214

PET PORTRAITS:
Melissa Kahout's work is a perfect gift for the pet lover in your life. Great for graduations, anniversaries, birthdays, weddings or just because you love your pet. You can contact Melissa @817-924-7063 or www.mkohouthorseportraits.com

LEARN TO SWIM LESSONS - With emphasis on Olympic strokes. Contact: Richard Sybesma, Head Swim Coach TCU Box 297600, Fort Worth TX 76129 817-257-5646 or 817-257-7963

COMPLETE PROPERTY RENOVATION: Demolition, clean-up, specializing in historic home renovations, painting, wallpaper. Contact Jeff at 817-988-7113.



Jeff Davis
Chairman/Fort Worth Division

REPUBLIC TITLE OF FORT WORTH

420 Throckmorton
Suite 640
Fort Worth, Texas 76102
Main (817) 877-1481
Metro (972) 445-5044
Direct (817) 806-1301
Fax (817) 810-1051

A DIVISION OF
REPUBLIC TITLE OF TEXAS, INC.

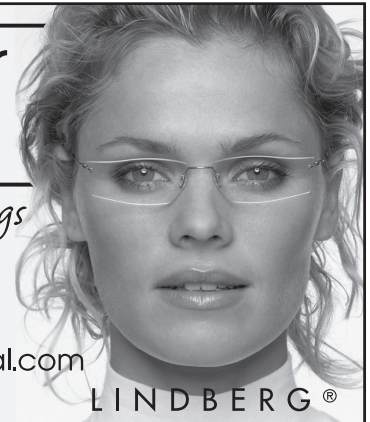
Email: jeffdavis@republictitle.com

Ben Taylor Optical

Style • Service • Savings

1101 West Rosedale
817-870-2061

www.BenTaylorOptical.com



LINDBERG®



Shaw's Burgers & Shakes NOW OPEN

serving sandwiches, salads, appetizers and.....
Burgers & Shakes!!

From Basic Burger to Bison Burger
We have the best!

Top off your meal with a Malt or Shake
Vanilla Hazelnut, Chocolate, Strawberry or Oreo Cookie

1057 W. Magnolia Ave.
817-926-2116
www.shawsburgers.com

Monday 11 am to 2:30 pm
Tuesday to Friday 11 am to 9 pm
Saturday 5 pm to 9 pm
Closed Sunday
TAKE OUT Available, Business Delivery Coming Soon!

**14th Annual
Joe's Run 10K/5K
Saturday March 26, 2011**

Located in the Historic Hospital District (near Southside) at Rosedale and Hemphill



You won't need your umbrella, it'll be a sunny day at **JOE'S RUN**

competition will be fierce, the awards unique

with lots of fun for everyone. Come on out and walk or run

After the race enjoy rousing entertainment

and a sumptuous food court

You just don't want to miss this one!

Entry fees:
Single runner (Through March 12).....\$18
Single runner (After March 12).....\$20
Team runner (Teams of 5 or more).....\$15
Race Day Registration.....\$25

For additional information call: (817) 424-8838, email joesrun@samaritanhouse.org, or visit www.joes-run.com

**Mistletoe Heights Association
Income & Expenses**

January 1 through February 15, 2011

Jan 1 - Feb 15, 11

	Jan 1 - Feb 15, 11
Income	
Advertising Income - Newsletter	396.00
Central Market Bags	82.00
Dues Donations	50.00
Interest Income	0.65
Total Income	528.65
Expense	
Bank Charges	0.18
Newsletter Expenses	399.75
Water Expense - Newby	54.56
Total Expense	454.49
Net Income	74.16



Check out our updated website:
www.mistletoeheights.com

GlamourPaws

2412 Forest Park Blvd. 817.923.9828

We Love Your Dog

20% off

St. Patrick's Day Special
on all non-service items, excluding food



Your Neighborhood Groomer

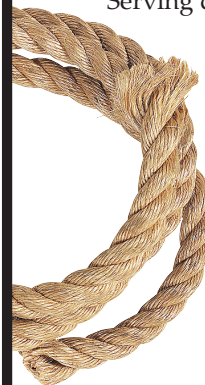


RESTAURANT

Serving dinner 5-10 p.m. Tuesday-Saturday

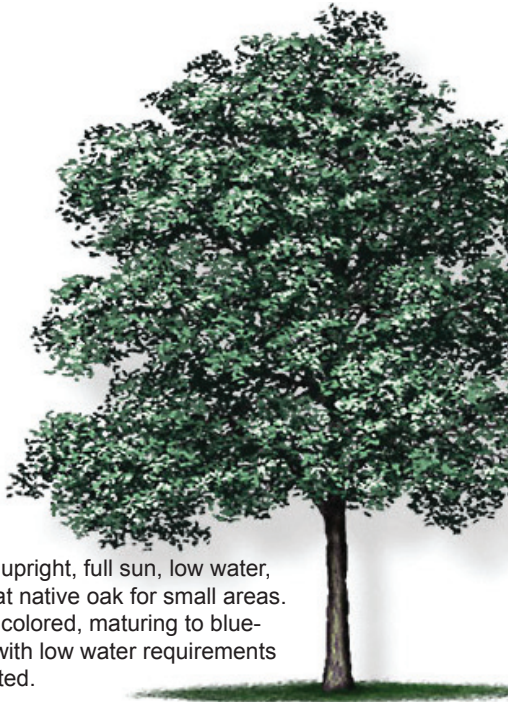
Call Grady's to schedule your next holiday party, private event, or catering needs
817-922-9980

2443 Forest Park Blvd.



TREE TIP
Try a
Lacy Oak,
Quercus
galucoides

A native shade tree, upright, full sun, low water, 30' X 20'. This is a great native oak for small areas. New leaves are peach colored, maturing to blue-green. Look for trees with low water requirements that are native or adapted.



Kim and Kay's Painting and Remodeling

In business since 1982.
 The first woman in Texas to be licensed.
 Full time staff, one of every trade.
 Specializing in renovation.

KITCHENS

Cabinets Counter Tops Flooring

BATHROOMS

Tile/Granite Plumbing Painting

INTERIORS

Lighting/Electrical
 Custom Painting
 Carpentry

EXTERIORS

Restoration or install new windows and doors
 Painting/replacement of wood patios/decks

Office: 817-735-9641 Mobile: 817-714-3456 Ft. Worth

I love my "gray Taco Bell"...

The gray mission-style bungalow on Harrison Avenue has been my home for almost 30 years. And Mistletoe Heights has always meant much more to me than just a convenient place to live.

I'm already your neighbor, I'd like to be your friend—and Realtor®.

While I may not have a drive-thru window, no one will work harder for you. After all, you know where I live!



*"I am truly your neighborhood Realtor®
 —do call me for your real estate needs"*
 Gaye Reed



(817) 921-8164
 gaye.reed@coldwellbanker.com



Mediterranean flavors infused with Southern Hospitality.



CHADRA
 MEZZA & GRILL

Southern Hospitality. Mediterranean Flavor.
 1622 Park Place Avenue | www.chadramezza.com
 Fort Worth, TX 76110 | 817.924.2372

Helpful phone numbers, e-mails, addresses and websites

	Phone (817)
City Code violations	392-1234
City of Fort Worth	392-2255
www.fortworthgov.org	
Police - non-emergency	335-4222
Garage sale permits	392-7851
www.fortworthgov.org	
Graffiti abatement	212-2700
Lily B. Clayton Elementary	922-6660
http://schools.fwisd.org/clayton/	
Paschal High School	814-5000
www.paschalhs.org	
Historical Preservation	
Larry Abrigg	392-8037
larry.abrigg@fortworthgov.org	
Southside Preservation Hall	926-2800
Hallyes@earthlink.net	
www.southsidepreservation.com	
The T/Longhorn Trolley	215-8600
www.the-t.com	
Trinity Railway Express	215-8600
www.trinityrailwayexpress.org	
City Council District 9	
Joel Burns	392-8809
district9@fortworthgov.org	

MHA officers

President	
Jeff Davis	817-999-6154
Vice-President	
James Huling	817-923-6642
Secretary	
Mecca Givens	817-927-2244
Treasurer	
Jeri Jo Blackmon	817-923-4393
Newsletter Editor	
Marjorie Day	817-914-8057

Volunteers

Historic Preservation Committee	
Kathy McReynolds	817-926-7955
Street Rep Captains	
Melissa Kohout (East side)	817-313-1419
Gaye Reed (West side)	817-921-0009
Welcome Baskets	
Beth Krugler	817-713-0993
Meralen Tyson	817-926-5909
Advertising Manager	
Kelly Reece	817-773-1637
Newby Park	
Patsy Slocum	817-923-5510
E-Mail Moderator	
Richard Yantis	817-924-2857
Webmaster	
Scott Ewing	214-403-7762 cell

Street reps (listed by blocks)	
East of Forest Park	Phone (817)
2200 W. Rosedale South	
Dottie Guffey	921-6288
2200 Irwin	
Gary Willis	924-4000
2100/2200 Mistletoe Blvd.	
Gil DeHoyos	926-6409
2100/2200 West Magnolia	
Mecca Givens	927-2244
2100 Harrison	
Aaron Torkelson	907-5533
2100 Mistletoe Ave.	
Pat Hale	924-5263
2200 Mistletoe Ave.	
Richard & Christi Yantis	924-2857
2100/2200 Edwin	
Katrina Pittman	921-2221
2100 Weatherbee	
Judy Gude	926-8843
2200 Weatherbee	
Susan Harwell	923-8806
2100 Morphy	
Vacancy	
Forest Park Blvd.	
Steve McReynolds	926-7955
West of Forest Park	
2300 W. Rosedale South	
Kimberly Helixon	927-4641
2300 Irwin	
Sue Duvall	926-8714
2300/2400 Mistletoe Blvd.	
Lisa Stewart	924-9666
2300 West Magnolia	
Susan Pressley	923-6061
2300/2400 Harrison	
Robert DeVargas	923-9393
2300 Mistletoe Ave.	
Sam & Jack Bradbury	924-9869
2300 Edwin	
Grant Pannell	924-0051
1100 Clara	
Marc & KathyJo Rogers	923-3304
1200 Clara	
Betty Arvin	924-7088
1100 Buck	
Kate Herring	923-3843
1200/1300 Buck	
Simone Scott	924-3838
1100 Mistletoe Drive	
Meralen & Gerry Tyson	926-5909
2300 Mistletoe Drive	
Carol Benson	921-4000
Neighborhood police officers	
Sidney Keith (West)	944-1038 cell
David Cloninger (East)	992-0181 cell

Editorial policy

Articles and letters to the editor are welcomed. To be published as written, letters must be addressed to the editor, signed and include a phone number.

Anonymous letters will not be published. Articles may be submitted for publication, signed or unsigned, subject to approval and editing.

Contact info helps, if we have questions for you.

Letters to the editor are limited to a half-page (approximately 350 words). Please send e-mail to perrellim@aol.com

Advertising information

To place an advertisement or for actual mechanical sizes, please e-mail Kelley Reece at kelley@metro-mailer.com

Rates:

Business-card size	\$18
1/4 page	\$36
1/3 page	\$54
Half page	\$61
Full Page	\$120
Pre-printed inserts	\$60

8 1/2 x 11

Deadline for ads, stories and letters is the 15th of each month

MHA yearly memberships

Voluntary dues are \$15, \$25, \$50 or what you can afford. Your dues help pay for this newsletter, the Mistletoe Heights phone directory and many neighborhood functions. Please make your check payable to Mistletoe Heights Association. Mail to: Jeri Jo Blackmon, 1408 Mistletoe Drive.

Free classified ads

As a MH resident, you get a free classified ad. Please submit by the 15th of the month. Notify the editor at 817-914-8057 or email: perrellim@aol.com

Newsletter Gang

Editor Marjorie Day

Editorial Assistance Jim Peipert

Design Cynthia Wahl

Advertising Kelley Reece