



The Mistletoe Express

www.mistletoeheights.com

October 2009

Keep Halloween alive!

By Marjorie Day

When I was a child in New York, Halloween was the only night that lacked parental rule. Not only could I wear anything I wanted, but I could go anywhere I wanted with nothing more than my pillowcase and an assurance from my older brother that he would not leave my side. Let's say once we hit the second doorbell, he was gone. I didn't freak out and call my parents because it was not a cool thing to even have parents on Halloween, and of course, there were no cell phones. I simply went around the neighborhood until I hooked up with the kids I knew which took about 2 minutes. We stopped at the grocery market, got shaving cream and eggs and looked for homes with the lights out. Any house that we came upon with the lights out, received a barber's welcome and an egg on the porch.

We liked apartment buildings because you could move quickly from one door to another and get your bag filled quickly. We liked streets with houses just like Mistletoe Heights because you could easily walk through the neighborhood and move fast. Houses on hills, houses with stairs, houses set back far on the property were deemed a waste of time. What if you went all that way and they offered something you hated like green lollipops?

A favorite among my buds were the houses that would leave out "honor candy". We always took our fair share and nothing more but we knew that one kid would take the whole bowl from the stoop. If we saw that happening, we would egg the kid in an ovo-ambush.

Halloween was the best holiday, well maybe Christmas was better but it was close and then, slowly, you could see the pullback, from the best night of the year. Halloween was dying.

The first false story about the razors in the apples had come out in the news and even though it was found out to be a hoax, the yearly ritual of the apple treat was deemed dangerous and sinister. In fact, anyone who would hand out an apple was suspect. I remember my mother saying, "Don't take any apples or homemade cookies or candy. If it doesn't come from the store don't eat it. But most of all apples. Do not eat any apples...apples are dangerous!"

MH Pumpkin carving contest

By Steve McReynolds

After a long hot summer, the mornings are once again crisp, and fall is threatening. Before you turn around, it's time for the annual Mistletoe Heights Pumpkin Carving Contest. The rules for this event are simple. After dusk, on the night before Halloween (Thursday October 30th) an elite gang of gourd judges hit the street to pick the best pumpkin creations.

Only real carved pumpkins can be entered into the contest. The Grand Prize winner will get 100 shares of Pontiac stock or a \$50. prize (to be decided later). The winner and all honorable mentions will get a fabulous write up in the newsletter.

Plan your gourds grimace now...get the whole family involved! Remember judging occurs the night before Halloween and Styrofoam and plastic pumpkins will not be considered a viable entry.

NEW NEIGHBORS!

Trick or Treaters flock to Mistletoe Heights from all over town, so be prepared to deliver the hospitality and treats. And keep an eye out for The Mistletoe Halloween Street Band on their annual roam...



Inside This Issue

- 1 Keep Halloween alive and Pumpkin carving
- 6 Yard of the month
- 10 Sign Committee report
- 12 Gardening in October
- 13 Dues and expenses

Have you contributed dues to Mistletoe Heights? There still time to be on the list checkout page 13

Work Close to Home



- Attractive downstairs office space available for leasing, across the street from Baylor All Saint's Hospital, 1616 Mistletoe Blvd.
- Turnkey/inclusive Package: new hardwoods and paint, shared waiting room, phone, internet and utilities included.
- Contact Susan Wade, 817 207 0042 or wadesusan@sbcglobal.net.

Continued from page 1

The school sent out warnings of children being drugged with candy and after that hoax my mother made us show all of our loot on the kitchen table for a pre-eating inspection. There she sat with her bifocals on, looking for evidence of razors or poison on my mini-snickers. The amazing thing is that this hysteria had no media discrediting it. Why should the media discredit this false reports when everyone glued to the nightly news to see if it was safe for the kids to visit the old couple down the street who made candy apples? Who were these demon stranger neighbors? Halloween was under attack by word of mouth, urban legend, and a media that liked good ratings no matter how they were had.

Halloween in a few years was dismantled by a collective of fearmongers and media cheeseballs from a night of joy, into a bunch of Kool-aid punch parties, and teacher sponsored costume parades of young kids in front of older kids. When I saw the new safe Halloween with its cheap white powdered donuts, k-mart costumes, and parents nearby for the kids that came after me, I was glad that I lived Halloween as a free child in a world that had not gone 100% helmet law.

Halloween is more a community connective celebration than any other holiday. Neighbors open their doors to children and offer a bowl of treats. I know how I look forward to seeing the costumes of kids and always love to see the inventiveness of a home-made costume. It's a time to make everything scary, funny and fun. It's a night to diminish fears by opening up your home and offering the dentist in your neighborhood some potential cavities to fill. Don't be a frump and leave the porch light off.

So make a costume, fill the bowl with candy, carve your pumpkin for the contest, be silly and be the neighbor that screams with horror when they see a 3 foot spook covered in a sheet. It's a time to bring young and old together, mock our fears and eat and undetermined number of tiny candy bars.



1633 Park Place
Fort Worth, Texas 76110

(817) 923-2282



Please be aware...

We've received reports that people are going door to door in the community attempting to sell magazines and books implying that the proceeds benefit Cook Children's. This is not a legitimate or sanctioned activity. Cook Children's does not conduct or endorse door to door solicitations. If you are contacted or solicited at your home, please do not support this fraudulent activity. Please alert your friends and neighbors as well.

Naturally, it's our hope that these activities will not impact fundraising by Cook Children's Health Foundation because community support is so critical to fulfilling our promise.

If you have questions or concerns, please feel free to contact Gary Cole, vice president for Development, Cook Children's Health Foundation, at 682-885-4104 or via email at Gary.cole@cookchildrens.org.



Kim and Kay's Painting and Remodeling

In business since 1982.
The first woman in Texas to be licensed.
Full time staff, one of every trade.
Specializing in renovation.

KITCHENS

Cabinets Counter Tops Flooring

BATHROOMS

Tile/Granite Plumbing Painting

INTERIORS

Lighting/Electrical
Custom Painting
Carpentry

EXTERIORS

Restoration or install new windows and doors
Painting/replacement of wood patios/decks

Office: 817-735-9641 Mobile: 817-714-3456 Ft. Worth

LILY B. CLAYTON ELEMENTARY

INVITES YOU TO JOIN OUR
INFORMATIONAL KINDERGARTEN COFFEE

- MEET THE PRINCIPAL
- MEET THE KINDERGARTEN TEACHERS
- MEET OTHER PARENTS
- ASK QUESTIONS
- RECEIVE INFORMATIONAL PACKET

ALL FAMILIES WITH CHILDREN ENTERING KINDERGARTEN

THE FALL OF 2010

(...OR FUTURE YEARS)

WEDNESDAY, NOVEMBER 4TH @ 6:30 p.m.

2215 FOREST PARK BLVD.

KRISTY PARKER

817.296.7334

bkparker@charter.net



MHA Meetings and Events

November 17th

7pm, for consistency purposes all
Regular Association meetings will be at
Jeff Davis' home at 2325 Mistletoe Drive.
The election of officers will be held at the
November 17th meeting.

Boo at the Zoo

October 22 - October 27, 2009 5:30 - 8 p.m.
www.fortworthzoo.org

Pumpkin carving

Thursday, October 30

Dusk - Mistletoe Heights

Halloween October 31

Dusk and Beyond

Licensed Therapists
Beth Clardy Lewis, M.A., LPC-intern
rebellious teens and young adults
Dawn L. Stilwell, M.A., LPC-intern
children, play therapy, parenting
1208 W. Magnolia Ave
Proud members of Fort Worth South, Inc.
817.870.1087
wefixbrains.com



REPUBLIC TITLE

Jeff Davis
Chairman/Fort Worth Division

REPUBLIC TITLE OF FORT WORTH

420 Throckmorton
Suite 640
Fort Worth, Texas 76102
Main (817) 877-1481
Metro (972) 445-5044
Direct (817) 806-1301
Fax (817) 810-1051
Email: jeffdavis@republictitle.com

A DIVISION OF
REPUBLIC TITLE OF TEXAS, INC.

I love my "gray Taco Bell"...

The gray mission-style bungalow on
Harrison Avenue has been my home for
almost 30 years. And Mistletoe Heights has
always meant much more to me than just a
convenient place to live.

I'm already your neighbor, I'd like to be your
friend—and Realtor®.

While I may not have a drive-thru
window, no one will work harder for you.
After all, you know where I live!



"I am truly your neighborhood Realtor®
—do call me for your real estate needs"
Gaye Reed



(817) 921-8164
gaye.reed@coldwellbanker.com



BUD'S HANDIMAN SERVICES

817-657-3218

PO Box 8324
Ft Worth, TX 76124

budshandiman@sbcglobal.net

Bud Welch / Owner Satisfied

Customers in Mistletoe Heights
Doing the jobs, you do not want to.

Show Your Spirit

L I N D B E R G ®



Ben Taylor Optical

1101 W. Rosedale • (817) 870-2061

Free Classified Neighborhood Ads

PET PORTRAITS:

Melissa Kahout's work is a perfect gift for the pet lover in your life. Great for graduations, anniversaries, birthdays, weddings or just because you love your pet. You can contact Melissa @817-924-7063 or www.mkohouthorseportraits.com 2242 Mistletoe Blvd.

Anyone who may have a used but running A/C window unit for sale, please send me a note at hao@urbangreenbuild.com.

HOUSE SITTING / PET SITTING / CHILDCARE SERVICES

College Student residing in Mistletoe Heights Home for summer
Contact Margo Hudson for more details
margo.e.hudson@gmail.com /2425 Mistletoe Blvd

LEARN TO SWIM LESSONS - With emphasis on Olympic strokes

Contact: Richard Sybesma, Head Swim Coach
TCU Box 297600 • Fort Worth TX 76129
817-257-5646 or 817-257-7963

ESTATE SALE SERVICES - Estate Sales & Appraisals

Experienced, reliable estate sales in and out of Mistletoe Heights since 1992. Certified Appraiser, International Society of Appraisers. Appraisals for insurance, estate evaluations, donations; whatever your needs.

Contact: Terri Ellis, Mistletoe Estate Sales, 817-926-9424
or email tquilts@mac.com

New Street Captains and Reps:

Let's all take the time to personally thank Melissa Kohouts for taking over the job as the eastside Street Captain. We also have thank you's to go out to Aaron Torkelson for taking over the Street Rep position on the 2200 block of Harrison, and Katrina Pittman for taking over the Street Rep position on the 2200/2100 block of Edwin. We really appreciate it!

Thanks,

Marjorie Day

Bob Bourland

Sales Consultant
Frank Kent Honda
3451 W. Loop 820 South
Fort Worth, TX 76116
Dealer: 817.696.4144
Cell: 817.266.7693
Fax: 817.696.4158
robert.bourland@sbcglobal.net



TERMINIX

The Nationwide Pest Control Experts

Charles Zethraus

Certified Inspector

Free Termite & Pest Inspections

817-597-1938

Call for Details

MASTER TAILOR

"CUSTOM CLOTHES AND ALTERATIONS"



TUXEDO RENTALS FOR
SPECIAL OCCASIONS

BYRON

JOSE

JORGE

3020 STANLEY AVENUE
off 1800 block west Berry St
FORT WORTH TEXAS 76110
817-926-4221
817-921-1747
MasterTailorTX@aol.com



professional body mechanics on duty
**thebody
garage**

2112 Mistletoe Blvd.
Fort Worth, TX 76110
817-207-9800

Pilates in Mistletoe Heights

*Mat classes, group equipment classes,
personal training for privates, duets, and trios*

www.thebodygaragepilates.com
mechanics@thebodygaragepilates.com



YARD OF THE MONTH – 2304 Irwin

Yard of the month for October 2009 goes to Nora Oliver and Bob Marvin at 2304 Irwin. Nora and Bob bought this house in the summer of 2006 when Nora moved here from Cape Cod. Nora explains she had always lived on the East Coast in contemporary houses and as soon as she walked in the door she fell in love with this vintage bungalow style home. She had always wanted an older home and this one was built the year her mother was born.

There has been an ongoing trial and error experiment, as Nora tried many of the plants she was familiar with from her East Coast yards which did not survive in Texas summers. The front walk, the curb and the sidewalk are paved with flagstone and accented with crepe myrtles and liriope. A bed planted with dwarf yaupons lines the inside of the sidewalk, and continues around the west side of the property where a large pecan tree and a smaller redbud are interspersed with pittisporum and ferns. The beds in front of the large covered porch contain pampas grass and rosemary on either side of the steps, and ferns and boxwood and a magnolia tree to the left. Nora says neighbors told them grass would never grow well in the front yard because of the shade, but their perseverance has won out and St. Augustine grass is thriving there. Nora gives Bob the credit for this and calls herself the idea person and Bob the laborer as he loves to work in the yard. To the right of the walk daisies and Indian hawthorns, and nandina provide flowering color. Variegated bougainvilleas are planted in pots beside the steps and a hanging basket on the porch features periwinkles now but Nora says she will replace them soon with chrysanthemums and later with pansies for all-year color. The driveway to the right of the house leading under the covered parking area is lush with greenery of ferns, hostas, daisies and nandinas. Nora has roses in her back yard where she has more sun, and has also built a waterfall there so she can hear the sound of water. Mistletoe Heights salutes this yard and thanks Calloway's Nursery for providing a gift certificate to each winner.





Neighborhood Police Officer

Mark Russell

Office 817-871-8885

Mobile 817-991-8472

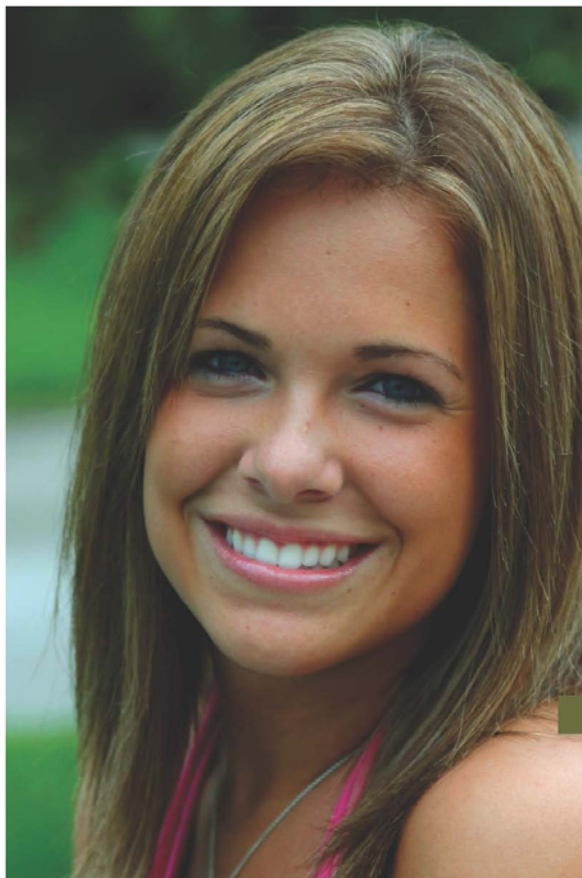
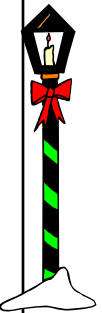
Email: Markus.Russell@fortworthgov.org

Please watch out for your neighborhood, and be mindful as much as possible. Lock your doors, lock your car and remember to lock windows as well. Leave a talk radio program on, as it sounds like someone is home. Arrange for mail holds if going out of town and ask neighbors to pick up door flyers if one should find itself on your front door knob.

Volunteer Found for Christmas Streetlight Bow-tying Party

Save the date! We have new hosts for the annual Mistletoe Heights Bow-tying Party! So a big Shout out to Gary and Susan Willis for becoming the new home for this gathering. The Bow-tying event will be at Gary and Susan Willis's home at 2237 Irwin, on Sunday before Thanksgiving (November 22).

Since there is a Cowboys game at noon that day, Gary and Susan will start around 4:00 p.m. There will be another announcement in the newsletter, and a reminder email. Be sure to say thanks to Gary and Susan Willis.



Dr. David C. Medford, DDS

Orthodontic · Cosmetic · Family Dentistry

Adult & Adolescent ORTHODONTICS

- Traditional Metal,
Ceramic & Invisalign
(clear removable trays)

**Affordable Monthly
Payments!**

2517 8th Avenue
Ft. Worth, Tx. 76110
817.923.9877
www.drmedford.com

Free Classified Neighborhood Ads



2000 SF, 2 BD, 2 BA, 1 car garage, Frig included, 1,500 per month. 2321 Irwin.

Free red canna bulbs, you dig. 817-923-5510 Patsy

Antique Craftsman Interior doors, storm door, glass table and 4 chairs. Call Marjorie 817-914-8057

The Presbyterian Night Shelter is ending homelessness one individual at a time through **Operation Move Out!** PNS is asking volunteers to donate basic furniture items, toiletries and other household necessities so the clients aren't moving into empty homes. Having a comfortable home will ensure their successful and decrease any chances of re-entering the Shelter.

Starting May 28, furniture, toiletries and other household items can be dropped off at PNS from 10 am. to 2 pm on Thurs and Sat., at 5501 Thelin St., Suite 131 Quantity donations can be picked up (on Thurs & Sat 10 am and 2 p.m.) to schedule (call 817-632-7415).

If you are interested in participating in or donating to Operation Move Out, please contact Heather White at 817-632-7415 or hwhite@pns-tc.org

Do you have more t-shirts than you can wear? I have a solution! Turn them into memory quilts. Call Jill at 817-217-4497 or visit www.sew-what-quilts.com

Vintage Sales

Estate sales and appraisals in Fort Worth since 1992.
Call Anne Bourland for information
817-924-5959



Free Classified Neighborhood Ads

EARLY CHILDHOOD MUSIC:

Mistletoe Musikgarten

For babies, toddlers, pre-schoolers and their parents
Taught by Carol Spencer, certified by the Early Childhood Music and Movement Association and the Gordon Institute for Music Learning

MistletoeMusik.com

817.927.3240 ~ carolingfw@sbcglobal.net

Apartment for Rent

One bedroom apartment available October 1st. Twenty foot ceilings, hard wood floors, washer/dryer, refrigerator, dishwasher, microwave, covered parking. Contact Jeri Jo Blackmon for more details.

JeriJo@Charter.net or
817-923-4393.

Your resident ad is FREE, so email the editor with your request.

Volunteer Family needed for the July Forth Ice Cream social. Please contact jeffdavis@republictitle.com

PARK PLACE PHARMACY

Business Hours:
Monday - Friday
9:00am to 6:00pm

Closed Weekends
& Holidays

Craig Nicholson, RPh
Monique Nicholson, RPh

Your Neighborhood Pharmacy

Phone: 817-924-9292
Fax: 817-924-9264

1601 Park Place Ave, Suite B
Fort Worth, TX 76110-1303

V
O
L
U
N
T
E
E
R

Thief caught! 9/3/09

Today at 1pm I saw two men breaking in to my truck that was parked on West Magnolia. I called 911 and stayed on the phone while one guy broke the steering column and tried to hotwire the car. He was apparently unable to start it and gave up. He moved on to another car that was parked in a driveway on our street. When the alarm went off on that car, he bolted toward Forest Park where he and his accomplice were caught by the police.

A neighbor saw one of the guys discard a screwdriver as he ran down Forest Park so the police were able to collect that evidence. After being arrested, he admitted to trying to break in to a third car on our street. The owner of that vehicle had seen the men on the street an hour earlier and might have scared them off when she came out her front door.

A big thanks to Fort Worth PD!

Wendy Blanton



**Target
Your
Audience...**

**...Capture
Their Attention**

*We provide an array
of professional services...*

Graphic Design & Creative Services
Bulk Mail Services
Print Services
Data & List Services

**METRO
MAILER**
Effective and Affordable Advertising and Fulfillment Services

817-451-1300 • fax 817-451-1365
5719 E. Rosedale #809 • Fort Worth, TX 76112

Owned and Operated by Mistletoe Heights Residents

**Take
Advantage
of
Affordable
Direct Mail
&
Advertising
Services**


**SO MUCH PLANNING
GOES INTO RETIREMENT.**

HAVE YOU THOUGHT ABOUT TAXES AS WELL?

It's likely that your retirement income may come from many sources, such as Social Security, pension distributions, a 401(k) or IRA with draws. That's why, if taxes are a concern for you, it's important to choose the right investments for your portfolio. At Edward Jones, we have many options that can give you more control over your taxes, so you can enjoy what you've worked so hard to achieve.

Edward Jones, its employees and financial advisors cannot provide tax advice. You should consult with a qualified tax specialist for professional advice on your specific situation.

Call today to see how our unique, face-to-face approach makes us best-suited to help long-term investors meet their current needs and future financial goals.



Bruce C. Border, CFP®
Financial Advisor
2453 Forest Park Boulevard
Ft Worth, TX 76110
817-926-8056

www.edwardjones.com Member SIPC

Edward Jones
Member SIPC

Neighborhood Entrance Sign Committe Report

submitted by Melanie Smith

The newly formed Neighborhood Entrance Sign Committee met on Monday, September 21 at 7:00 PM at the home of Melanie Smith --2400 Harrison Avenue. Mike Danella, as chairman, led the committee. Melanie Smith, Mike Danella, Gaye Reed, Roselynn Scott, and Martin Herring were in attendance. Others who contacted the committee with interest but couldn't attend were Mary Ellen Peipert, Patsy Slocum, Michelle Key, and Kathleen Walker.

The committee decided the first focus is replacement of the wooden sign at the intersection of Forest Park and Rosedale and balancing that with appropriate sign on the southwest corner. Mike presented photos from Internet research of many entrance signs. Melanie presented pricing for background information on cast concrete signs from a local near south side company, Builders Equipment and Supply and the committee found it quite reasonable.

Martin Herring presented information he had researched on large, laser-cut, metal silhouette sign with the possibility of application using our current logo. The committee discussed the possibility of laser-cut metal lettering as well.

The committee bounced around all sorts of ideas and "wish list" items for improvements at strategic entrances to our neighborhood. Mary Ellen Piepert suggested that painting or staining the concrete retaining walls on Forest Park and Rosedale a consistent, appropriate color, would be a great enhancement.

Mike Danella presented a photo of a historic sign from another neighborhood that is reminiscent of a narrow column with vertical lettering with a cast urn on top. The committee felt it was architecturally and historically appropriate in design for our neighborhood and would like to explore the possibility of using something similar, with possible placement in the Jerome and Mistletoe Boulevard neighborhood entrance, along with using the same sign at the Forest Par and Park Place entrance to our neighborhood. The committee also considered placing this sign at appropriate strategic points in the neighborhood.

Melanie Smith presented background information and pricing from Bruce Richardson of the Near Southside business of Signs Etc. on Park Place about the possibility of banners to attach to street poles begining on Forest Park and other strategic spots in the neighborhood. Patsy Slocum has had contact with a contractor named Tom Hale who has experience with banners from TCU. Patsy also mentioned that she has several granite antique light poles donated from TCU that could be used in Newby Park or in conjunction with new signage.

The committee decided that the first step will be to meet with the city to discern what parameters we will be required to work within as most of the areas where we want to place signage will be in city right of way. The committee also feels that continued "planned" landscaping supported by a sprinkler system is a priority to enhance the aesthetics of our main entrance and for sound control now and in the future when the tollway is built within that vicinity.

New signage has been a concern of many for at least four years with no accomplishments. The committee is anxious to move forward and place new signage. It may be most difficult due to city restrictions to accomplish the first priority, so the committee may move forward on accomplishing the banners first. Any additional help from folks in the neighborhood is welcome.

Mike Danella is contacting the city for more information and the committee plans to meet in late October at Melanie's house again. Notice of the meeting date and time will be forthcoming. Meanwhile, contact Mike @ 817-927-8875 or Melanie 817-923-8191 with any questions or information.

A Tribute to a neighbor

Submitted by Patsy Slocum

A special tribute should be given to Jim Pestell, who lives in the house at the corner of W. Rosedale and Forest Park. Jim has given his cooperation, time, and labor to the installation of 8 Crepe Myrtles that have been recently planted at the entrance of the neighborhood. These new Crepe Myrtles have dark red blooms and will help beautify that corner and give us a gorgeous view to welcome traffic down Forest Park.

Hopefully, more Crepe Myrtles can be planted along that wall, as they are very Texas friendly and make a showy debut in the spring, summer and fall. Jim painted that very ugly wall and railing when he moved into his house, and that was a tremendous change for the better.

Maybe soon we will have a Landscape Architect to start the entrance improvement project on that corner that all the neighborhood seems to want. More power to a neighbor who wants to help out in any way that he can.



October 3rd
Saturday 3pm - 10pm
Free Event

Look for banners marking venues
on Magnolia, Park Place, Main and
throughout the near southside.

September 4th
& October 2nd
1st Fridays! 7pm - 10pm
Magnolia Green Park

Live Music, bring your family,
blankets, pets and friends.



www.fortworthsouth.org • 817-923-1343

Located in the heart of
Fort Worth's historic district

HEARTWOOD FLOORING

EXPERTISE IN:

**HARDWOOD FLOOR
RESTORATION & INSTALLATION**

Sand, stain, repair, seal, handscrape, inlay.

Stanton McKibbin

Owner

(817) 271-5802

LIKE A GOOD NEIGHBOR, STATE FARM IS THERE.®



For your insurance and financial
needs, see State Farm Agent:

Jason Needham, Agent, ChFC CLU
1708 8th Avenue
Fort Worth, TX 76110-1348
Bus: 817-921-4111 Toll Free: 866-945-2766
jason.needham.nv00@statefarm.com

LIKE A GOOD NEIGHBOR



STATE FARM IS THERE.®

Providing Insurance and Financial Services

statefarm.com®

P026038

State Farm Insurance Companies • Home Offices: Bloomington, Illinois

9/05

Gardening in October-Wildflowers

by Dottie Guffey

In the wild, the beauty of wildflowers seems effortless. As for human efforts, it takes a little work to duplicate nature's techniques. My plan is to try nature's techniques in the alleyway. In Texas, the time to sow wildflower seeds is July through October.

Soil preparation is the first step. Rake or till bare soil to a depth of about 1 inch. Deep tilling will damage the soil and encourage weeds so don't over extend yourself. If grass exists in the planting site you pick, set the mower on its lowest setting and scalp the area down to bare soil before tilling unless you have rocks embedded in it. Rock removal is tedious, but the only way to keep the mower blades in shape.

Planting the seed begins with a process of soaking the seeds in a biostimulant solution prior to planting. I like alfalfa meal and just follow the directions on the label. Spread the wet seeds on a paper bag to dry overnight. Then distribute the seeds uniformly over the area at the recommended rate and rake lightly into the soil.

Watering the seeded area is probably the most delicate part of the procedure. The welcomed rain we recently had would have washed the seeds down the drain so easy does it. Watch the weather forecast. Water the seeded area thoroughly but avoid overwatering as this causes soil erosion and will displace the seed. Many of my bluebonnets are already up, and that is natural for many wildflower varieties to germinate in late summer to fall. Some small plants will be visible all winter and others will be visible in the spring.

Maintenance is probably the most critical step in wildflower planting. If the winter season is dry, provide irrigation the first fall. The same applies to the spring season, just water if dry. The small plants will need moisture to get established. **Good luck!**

PHOTOS OF YOUR COSTUMES!

SEND IN PHOTOS OF YOUR HALLOWEEN COSTUMES FOR OUR NOVEMBER NEWSLETTER. WHETHER YOU ARE WHIMPING OUT WITH A POLITICAL MASK AND SUIT OR YOU HAVE REALLY INVESTED YOUR TIME AND CREATIVITY INTO YOUR COSTUME... WE WOULD LIKE TO SEE YOU DRESSED UP!

SEND THE NEWSLETTER PHOTOS OF YOUR HALLOWEENED CHILDREN, COSTUMED PETS, PICTURES OF YOUR DECORATED HOME, AND THE EVER WONDERFUL GROUP PORTRAIT OF TRICK AND TREATERS.



Get on the list!

There is still time to contribute to the neighborhood!

The Mistletoe Heights Association wishes to thank the contributors listed below for their dues donations to our neighborhood. These donations fund neighborhood activities such as July 4th Party, Easter Egg Hunt, Christmas Party, Christmas Street Light Décor, Fall Party, Welcome Baskets and other activities. In addition, your donation helps defray the cost of publishing the monthly newsletter and pays the city water expenses for the berm and Newby Park.

Dues donations are entirely voluntary and can be given at any time in any amount. We began our dues drive in the Spring and will end it in the Fall. There is still time to make your donation if you have been meaning to do so. The final list of 2009 contributors will be published in the November 2009 newsletter. If your name is not spelled or listed correctly, please email the MHA Treasurer: JeriJo@charter.net.

2009 Dues Contributors as of 8/15/09

\$1 to \$24	\$25 to \$49	\$50 to \$74	\$75 to \$100
Blanton, Paul & Carol Brown, Nancy Callarman, Teresa Caster, Victor Dreyfus, Charles & Lila Duncan, Louise Fershtand, John and Chris Flatt, Robert & Janet Givens, Jeff & Mecca Gude, Richard & Judith Horn, Bruce & Betsy Hubbard, JH & Marjorie Jaecks, Randy Kohout, Melissa Lindsay, Joshua Martin, William & Helen Matlock, Gray & Mary Mays, Glenda Sue McKeever, Kent & Rebecca Nesenholtz, Lynda Norris, Susan & Jennifer Tibor O'Connell, Michael & Carole Roff, George Shutt, Aaron & Colleen Spelce, Larry & Jane Anne Sutter, J.F. and Barbara Teague, Joy Turner, C.L. Whitney, J. Garrett & Sharon Wilson, Gene & Gail	Arora, Janis Benson, Jack & Carol Blanton, Alex & Wendy Camp, Claudia Carmody, Jeff & Erin Cates, Karen Cetto, Allen & Cheri Coy, J. Taylor & Claire Danella, Michael Davis, Jack & Linda Day, Thomas & Marjorie Donohoo, Gay Dowdle, Roy Duvall, Duncan & Sue Ewing, Scott & Valerie Graham, Gerald & Kelli Grant, David & Julie Graves, Leo & Dorothy Guffey, Grady & Dorothy Hager, James & Tammy Hale, Tom & Pat Hobson, Jack & Nancy Jones, Allan & Jefflyn Keesee, Craig & Kathy Kerstetter, Todd & Holly Luperi, Ana & Franco, Andres McKenzie, Randell Morris, Jana Peebles, Jamie Ramsay, Nancy Reece, Kelley & Megan Reed, Gaye Richey, Tom & Eileen Rustad, Eric & Nikki Sippel, Jimmie Dick Stemple, Norm & Irene Sybesma, Richard Tansey, Chris & Randyll Thomas, Andrea Tiller, Leah Weinburgh, Pete & Molly Wilson, Julia Yantis, Richard & Christi	Asher, Garland & Elizabeth Barnes, Barbara Chaney, Jack Ettinger, Alan & Phyllis Halbach, Joe & Melodee Hilgart, Laura Hotard, John & Susan Krugler, Beth Newell, Clint & Janna Parrish, William & Sue Patton, Eddie Purcell, Craig & Kerri Scott, Rose Lynn Slocum, Robert & Patsy Smith, Flavious & Melanie Stuart, Andre & Estela Wild, Beth	Blackmon, Jeri Jo Davis, Jeff Eastepp, Rosaline Evans, Tim & Rita Gosler, Zack Gresham, Jim & Lisa Grunde, Paul Hull, George & Rochelle Lowry, Bruce & Lisa McReynolds, Steve & Kathy Oliver, Nora Pressley, Brent & Susan Tyson, Gerald & Meralen

Please send your
donation to
Jeri Jo Blackmon at
JeriJo@charter.net

Mistletoe Heights Association Income & Expenses January 1 through September 16, 2009

	Jan 1 - Sep 16, 09
Income	
Advertising Income - Newsletter	1,997.00
Dues	4,581.00
Interest Income	4.63
Total Income	6,582.63
Expense	
Bank Charges	4.41
Christmas Party - 2008	200.71
Easter Egg Hunt	215.92
July 4th	579.14
Newsletter Expenses	3,180.74
Water Expense - Newby & Berm	2,207.46
Total Expense	6,388.38
Net Income	194.25