



The Mistletoe Express

www.mistletoeheights.com

June/July 2009

Letter from the president

By Jeff Davis

One learns many things as president of the Mistletoe Heights Association. One of them is: Never schedule a quarterly meeting on the night of the finals of *Dancing with the Stars*!

We had 50 folks for the previous meeting and only about a dozen on May 19. But a good time was had by all.

Jeri Jo Blackmon gave a detailed treasurer's report (if you have not paid your dues, please do so), and I provided the updates for the Traffic Committee, Midtown and Newby Park.

Vice President James Huling heads up the newly re-formed traffic committee, and it has met several times. The committee presented to the city a list of problems, mostly dealing with volume of traffic and speed in the neighborhood, and specifically on Jerome Street and Mistletoe Boulevard. Also, the city is trying to properly time the lights on West Rosedale, which should alleviate some of the traffic being dumped onto Mistletoe Boulevard. Speaking of Midtown: As of June 1, the Raymond Group pulled the plug on the development. They had financing for the hotel and retail portions of the mixed uses, but the office portion was problematical.

The city insisted on this 60,000-square-foot office component. And if you've read anything about office occupancy recently, there are 100,000 square feet available on Seventh

Continued on page 6

Personalizing your yard and flower garden

By Patsy Slocum

A gardener can add a distinctive personal touch to a yard or flower garden by using ornaments as a finishing touch. Many kinds of ornaments are popular these days: animal motifs, informal art pieces, gazing balls and birdbaths.

All kinds of animal ornaments are available to arrange throughout your landscape. If you like frogs, owls, rabbits or other animals, they can be displayed as a collection. Wildlife can be displayed in a natural-looking landscape of rocks and ponds. Light can be reflected from a shaded spot with a gazing ball or a birdbath. Even small statues can be partially hidden by foliage. Birdhouses can be hung or mounted to attract feathered friends to control insect pests. A weathered bench can be placed among the plants with a watering can at its side to contrast with the surrounding plants. Any material can be used as an ornament, but natural materials such as wood, stone and clay blend well with any setting. One can create a special theme for a garden by selecting a historical period, such as the Victorian Age. Urns, fences, sculptures, fountains, old tools, and artifacts can be used to create a focal point to draw the eye. Practical ornaments, such as weather vanes or sundials, can be used to provide information.

There are no set rules to follow. Just use good judgment so that your ornaments have proper design, pleasing color and good proportion. Avoid too much of a good thing, but that's all right too if it pleases you.

Happy gardening!

Inside This Issue

- 1 Letter from the President and Gardening
- 2 Newby Park and its caretakers
- 3 Dues Information and Mail in form
- 4 Yard of the Month
- 7 July 4th Parade and Ice Cream Social Info.



Subject: Newby Park

The city wrote back the following regarding the lack of edging and weeding for Newby Park:

In reference to your concerns with the weeding of grass encroaching in the flower beds at NewbyPark we can understand your concern, but due to a reduction in resources in the current year's budget, the City of Fort Worth is not providing the edging and trimming that is normally accomplished in parks and public spaces. The parks will be edged and trimmed, 1 time per year usually after the first hard frost. The only areas that were approved to receive this service are areas in close proximity to public buildings such as Community Centers, Libraries and other public offices. We agree that not edging and trimming gives the area an unfinished appearance, however, until additional resources become available, this service has been discontinued.

If we can be of any further assistance, please feel free to give us a call at (817) 871-7667.

Larry L. Moyer

Field Operations Supervisor, PACS/SWR/CW Mowing

Letter to the editor:

The Park Department of the City of Fort Worth has decided to trim its budget by slashing maintenance to the city parks. Our beautiful Newby park is now an unsightly mess by the maintenance crew not using a weed eater to get the grass and weeds around the beds, posts, and pavilion. The last mowing (contract) crew that I saw there had four men in the crew. One man was mowing and the other three were loitering underneath the pavilion. Is this a waste of manpower or what? And are we paying for 4 supposedly WORKERS and getting only 1? I would appeal to our residents to call or e mail the Park Department and ask for an amended contract on parks.

(Rich.Tuttle@fortworthgov.org) I don't think it is getting the effort for the amount of money involved.

Patsy Slocum

Please take a look at the dues that have come in so far. The Association needs your support to continue providing services such as landscaping, the directory and social functions, along with the newsletter and website.

Mistletoe Heights Association														
Dues 2009														
														As of 5/31/09
Number of Families Contributing														
Dollar Amount	Buck	Clara	Edwin	Harrison	Irwin	Mistletoe Ave.	Mistletoe Blvd.	Mistletoe Drive	Weatherbee	West Magnolia	W. Rosedale South	Other	Total Families	Total Dollars
10			\$ 1										1	\$ 10
\$ 15		1	2	4	2	2	2	2	1	2	2	1	21	\$ 315
20			\$ 1							1	1		3	\$ 60
\$ 25		1	5	3	2	6	5	3	3	2	3		33	\$ 825
30			\$			1							1	\$ 30
35			\$					1					1	\$ 35
50			\$		1	3	1	3	2	2			2	\$ 600
75			\$		1								1	\$ 75
\$ 100			1		1			5	1				8	\$ 800
Total families		2	8	9	7	12	8	14	7	7	6	1	81	
Total dollars	\$ -	\$40	\$255	\$ 165	\$305	\$ 360	\$ 205	\$ 790	\$ 290	\$ 200	\$ 125	\$15		\$ 2,750
Comments on dues notices regarding suggestions for improvements:														
Great Directory! Would be nice to replace the MH sign at the corner of Forest Park & Rosedale with one including the logo														
Thanks for doing all you do. Keep up the good work.														
Sidewalks, curbs and flower beds - triangle park. Entrance gates to neighborhood.														
Streets / sidewalks / litter / noise - especially 4 to 6 unit apts on Edwin or Irwin, south of W. Rosedale St. S.														
Please pass on this note. My husband Dewey and I have lived in our house since 1972. Dewey died 2/3/09. (from Sue Mays)														
Ongoing - keep alleys clean and curbs														
We need to spend bucks on an improvement project ... such as a new sign "Mistletoe Heights" with landscaping but I don't want to be in charge														
Print enough newsletters for renters too. Ones on our block (5 duplexes) enjoy it. Neeta is a good rep!														
I am very proud of my neighborhood and thank all of you who work so hard to keep it that way														
Need to landscape entrance at Forest Park and Rosedale														
Thank you for the HOA magazine. I enjoy it very much.														
Need better publicity for neighborhood location of meetings. How about some yard signs on major corners or an email list with info?														



Thank you for supporting your neighborhood association. Together we can make Mistletoe Heights an even better place to live.

\$15 \$25 \$50 \$Other

Name: _____

Address: _____

Suggestions for Improvement: _____



Please return your dues to:
 Mistletoe Heights Association
 c/o Jeri Jo Blackmon
 1408 Mistletoe Drive
 Fort Worth, TX 76110



Yard of the Month: 2308 Irwin St.

The Yard of the Month award for June goes to Michael Danella at 2308 Irwin St.

Michael has been a neighbor for almost six years. His yard is one in a row of nicely planted and maintained yards on the 2300 block of Irwin that seem to flow seamlessly one into the other. The approach to his bungalow-style house is paved with brick and accented by variegated liriopse on both sides.

The steps up to the house are tiled, as is the porch, with an inviting swing on one side and wicker settee and chairs on the other. An aralia is in a pot between the chairs, and a container with a wood fern stands beside the front door. A stained-glass panel is hung on the west side of the porch.

Tall palms in containers sit on either side of the steps, and lights illuminate the way at night. The east side of the front yard features multi-level plantings, including a yaupon holly, a sculptured fir, pittisporum and colorful insets of mums, purple wandering Jew and daisies.

The west side again features multi-level full-size and dwarf pittisporum, nandina, a red knockout rose, lantana, again interspersed with mums and daisies.

The area between the sidewalk and the street is planted with Asiatic jasmine ground cover on the right side. A bed on the left side features a Japanese maple, hostas and variegated liriopse.

We are told that Mike does his own landscaping and maintenance, and so we are sure he will appreciate the gift certificate generously donated by Calloway's Nursery to each of our Yard of the Month recipients.

Congratulations, Mike.



Neighborhood Police Officer

Mark Russell

Office 817-871-8885

Mobile 817-991-8472

Email: Markus.Russell@fortworthgov.org

Please watch out for your neighborhood, and be mindful as much as possible. Lock your doors, lock your car and remember to lock windows as well. Leave a talk radio program on, as it sounds like someone is home. Arrange for mail holds if going out of town and ask neighbors to pick up door flyers if one should find itself on your front door knob.

Please input Police Officer Mark Russell's phone numbers into your cell phone! 817-991-8472
This way you can call the minute you see something odd occurring in the neighborhood. Officer Russell wants to hear from you the minute you see anything suspicious!

TERMINIX

The Nationwide Pest Control Experts

Charles Zethraus

Certified Inspector

Free Termite & Pest Inspections

817-597-1938

Call for Details



1633 Park Place
Fort Worth, Texas 76110

(817) 923-2282

Instant Curb Appeal

Smaller lots and hardscapes may often mean a large tree is just not appropriate. This is a perfect opportunity for a small tree. Here are some of the best small flowering trees for our Texas landscapes:

- Deciduous Magnolias
- Redbud
- Texas Mountain Laurel
- Rusty Blackhaw Viburnum
- Mexican (or Texas) Olive
- Orchid Tree
- American Smoke Tree
- CrapeMyrtle

Located in the heart of
Fort Worth's historic district

HEARTWOOD FLOORING

EXPERTISE IN:

**HARDWOOD FLOOR
RESTORATION & INSTALLATION**

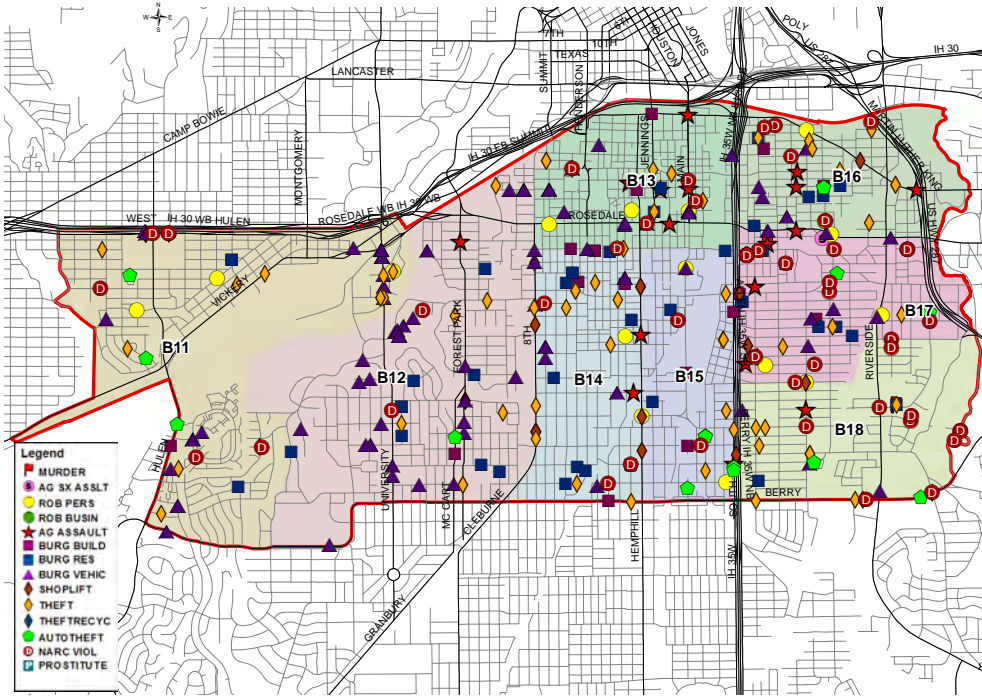
Sand, stain, repair, seal, handscrape, inlay.

Stanton McKibbin

Owner

(817) 271-5802

BAKER DISTRICT PART 1 CRIMES MAY 2009



The Police Department sent this map of the crimes for May 2009 in our area of town. Our vigilance has certainly helped Mistletoe have a much lower crime stat than surrounding neighborhoods. Reduce crime opportunities by calling about anything suspicious, lock up, bring your car into your driveway and safeguard your mail.

I love my
"gray Taco Bell"...

The gray mission-style bungalow on Harrison Avenue has been my home for almost 30 years. And Mistletoe Heights has always meant much more to me than just a convenient place to live.

I'm already your neighbor, I'd like to be your friend—and Realtor®.

While I may not have a drive-thru window, no one will work harder for you. After all, you know where I live!



"I am truly your neighborhood Realtor®
—do call me for your real estate needs"
Gaye Reed



(817) 921-8164
gaye.reed@coldwellbanker.com



LIKE A GOOD NEIGHBOR,
STATE FARM IS THERE.®



For your insurance and financial needs, see State Farm Agent:

Jason Needham, Agent, ChFC CLU
1708 8th Avenue
Fort Worth, TX 76110-1348
Bus: 817-921-4111 Toll Free: 866-945-2766
jason.needham.nv00@statefarm.com

LIKE A GOOD NEIGHBOR



STATE FARM IS THERE.®

Providing Insurance and Financial Services

statefarm.com®

P026038

State Farm Insurance Companies • Home Offices: Bloomington, Illinois

9/05

I WANT YOU...



*to be a Yankee Doodle Dandy
at the annual
Mistletoe Heights' Fourth of July Parade!*

Meet at the Triangle at 7:30 p.m. on the 4th.
**Absolutely no motorized or gas-powered vehicles
permitted in the parade!**

Join the fun! Decorate your bike, trike, wagon or other *human-powered* small vehicle with patriotic decorations. You can even decorate yourselves by wearing costumes, face paints and carrying flags or banners. Patriotic pets are particularly popular!

For first timers, the triangle is located on the west side of Forest Park Blvd., at Mistletoe Dr. and Harrison. Bring lawn chairs or blankets if you like, but curb seating suits most spectators.

An ice cream social will follow at the home of Martin & Gay Herring, just three blocks north of the triangle on the corner of Buck and Irwin (2336 Irwin).

Following the social, most folks move northward to the berm to enjoy the fireworks displays.

Join us in celebrating patriotism, fellowship and a favorite neighborhood tradition!



MHA Meetings and Events

August 18th, November 17th. 7pm, for consistency purposes all Regular Association meetings will be at Jeff Davis' home at 2325 Mistletoe Drive. The election of officers will be held at the November 17th meeting.

Events in June and July:

Fort Worth Symphony Orchestra presents

"Concerts in the Garden"

06/05/2009 thru 07/05/2009

Fort Worth Botanic Garden

817-665-6000

Orchestra and special artists staged outdoors in the Fort Worth Botanic Garden. Gates open at 6:30pm; performances begin at 8pm. All performances conclude with a fireworks finale.

June 5 Mingo Fishtrap

June 6 Larry Gatlin & the Gatlin Brothers

June 7 The Crawfish

June 12 & 13 Super Awesome Laser Adventure

June 14 Riders In The Sky

June 19 Cherryholmes

June 20 Jail House Rock

June 21 Best of the Big Bands

June 26 The N'Awlins Gumbo Kings

June 27 Take It To The Limit: The Music of the Eagles

June 28 Stairway to Heaven: A Tribute to Led Zeppelin

July 2, 3, & 4 Old-Fashioned Family Fireworks Picnic

July 5 1812 Overture

[http:// www.fwsymphony.org](http://www.fwsymphony.org)

July 4th Mistletoe Heights Parade & Ice Cream Social

Meet at the Triangle at 7:30pm 7/04/09

Fort Worth's Fourth - Trinity River

07/04/2009

LaGrave Field 5:30 pm to 9:30 pm Fort Worth

817 926-0006

Live music by the Ranch Radio along the Trinity river, levee slides, jet skis, watermelon, etc.

Fire works after Cats game

Letter from President (continued on page 1)

and more than 200,000 square feet of additional office space just came available in downtown Fort Worth. The office component was 15 percent of the project's cost, and the city refused to allow more than 50 percent of its TIF financing commitment.

The neighborhoods still have an important say in what's finally developed there, so perhaps something could be worked out in the future.

Neighborhood safety continues to be everyone's top priority. We've recently had bogus "alarm" salesmen, some thieves riding bicycles, and other suspicious activity related to autos prowling the neighborhood. Please, please report all suspicious activity to the police and use our Mistletoe Heights Web site to also warn your neighbors of anything unusual. I love my nosy neighbors.

Our July 4 parade will take place soon. We'll have the always popular parade, a DJ, bounce house(s), and a special guest singing the *Star Spangled Banner*. Let's be considerate too of our little kids and not have any motorized vehicles. Here's to a safe summer to all.

BUD'S HANDIMAN SERVICES

817-657-3218

PO Box 8324
Ft Worth, TX 76124

budshandiman@sbcglobal.net

Bud Welch / Owner

***Satisfied Customers in Mistletoe Heights
Doing the jobs, you do not want to.***

Show Your Spirit



Ben Taylor Optical

1101 W. Rosedale • (817) 870-2061

Free Classified Neighborhood Ads



2000 SF, 2 BD, 2 BA, 1 car garage, Frig included, 1,500 per month. 2321 Irwin.

Free red canna bulbs, you dig. 817-923-5510 Patsy

I have some lyre leaf sage and some monkey grass to give away. Both of these plants are industrial (meaning hard to kill). Call me first to make sure some is left and that I am home.

Rose Lynn Scott
2340 Mistletoe Avenue

There still might be some Iris bulbs to take as well. Hope you get lucky!

EARLY CHILDHOOD MUSIC

Carol E. Spencer
carolingfw@sbcglobal.net

Art Classes for the Summer! Classes will be for one week per session starting in July through August. Five days (Monday through Thursday 9:30 am-11:30 am, Fridays 9:30-2:00, weather permitting/ field trip to the zoo) Sessions are \$100 for each week, ages 8 to 12. Please call for details

Melissa Kohout 817-924-7063

The Presbyterian Night Shelter is ending homelessness one individual at a time through **Operation Move Out!** PNS is asking volunteers to donate basic furniture items, toiletries and other household necessities so the clients aren't moving into empty homes. Having a comfortable home will ensure their successful and decrease any chances of re-entering the Shelter.

Starting May 28, furniture, toiletries and other household items can be dropped off at PNS from 10 am. to 2 pm on Thurs and Sat., at 5501 Thelin St., Suite 131 Quantity donations can be picked up (on Thurs & Sat 10 am and 2 p.m.) to schedule (call 817-632-7415).

If you are interested in participating in or donating to Operation Move Out, please contact Heather White at 817-632-7415 or hwhite@pns-tc.org

Your resident ad is FREE, so email the editor with your request.

Kim and Kay's Painting and Remodeling

In business since 1982.
The first woman in Texas to be licensed.
Full time staff, one of every trade.
Specializing in renovation.

KITCHENS
Cabinets Counter Tops Flooring
BATHROOMS
Tile/Granite Plumbing Painting
INTERIORS
Lighting/Electrical
Custom Painting
Carpentry
EXTERIORS
Restoration or install new windows and doors
Painting/replacement of wood patios/decks

Office: 817-735-9641
Mobile: 817-714-3456 Ft. Worth

FYI

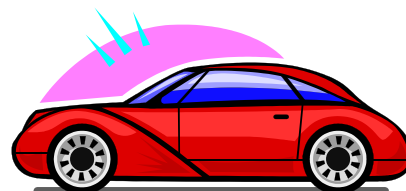
Break for New Car Buyers

The Auto Ownership Tax Assistance Amendment, introduced by Sen. Barbara Mikulski, D-Md., is part of the stimulus package, aka as the 2009 American Recovery and Reinvestment Act.

Families can save between \$300 and \$600 on their taxes. To be eligible, individual taxpayers must make less than \$125,000. Joint filers must make less than \$250,000.

The deduction is above the line, which means that it can be taken by itemizers and non-itemizers alike. Above-the-line deductions are subtracted from your total income to get the adjusted gross income and less taxable income means less money shelled out to Uncle Sam.

The average rebate is expected to be about \$330 and will be applied up to \$49,500 of the car's price.



Free Classified Neighborhood Ads

PET PORTRAITS:

Melissa Kahout's work is a perfect gift for the pet lover in your life. Great for graduations, anniversaries, birthdays, weddings or just because you love your pet. You can contact Melissa @817-924-7063 or www.mkohouthorseportraits.com 2242 Mistletoe Blvd.

Mama Kitty got pregnant before we had a chance to get her fixed. She has three beautiful babies that are now looking for new homes. They're 9 or 10 weeks old now. All are litter-trained and love people. Pics are attached. Please email Christopher.Fowler@sbcglobal.net or call 817-602-5635 if you're interested.



Facials and Electrolysis

Lady M of London: Contact Margaret Pluck@817-921-4781

Anyone who may have a used but running A/C window unit for sale, please send me a note at hao@urbangreenbuild.com.

HOUSE SITTING / PET SITTING / CHILDCARE SERVICES

College Student residing in Mistletoe Heights Home for summer

Contact Margo Hudson for more details

margo.e.hudson@gmail.com /2425 Mistletoe Blvd

LEARN TO SWIM LESSONS - With emphasis on Olympic strokes

Supervised by TCU Swimming Coach - Richard Sybesma

1996 Nicaraguan Olympic Coach

Six 2 - Week sessions beginning April 27, There are eight 40

Minute sessions for ages 3 to adult held Monday through Thursday.

All lessons are taught in the indoor heated TCU pool.

Cost is \$130 per 2 week sessions.

Contact: Richard Sybesma, Head Swim Coach

TCU Box 297600 • Fort Worth TX 76129

817-257-5646 or 817-257-7963

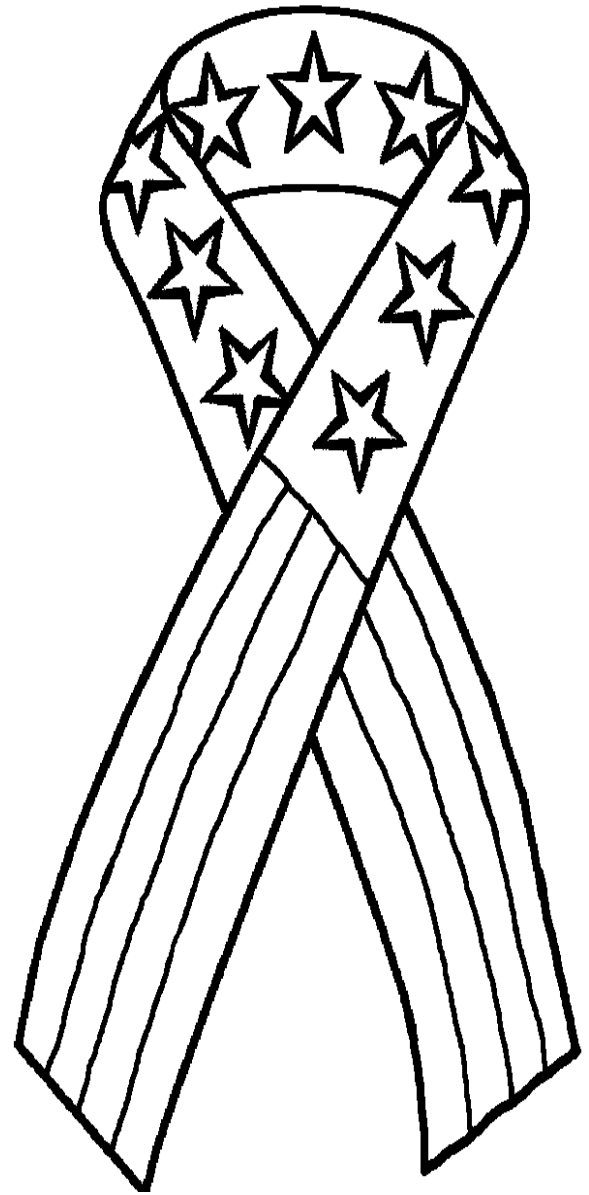
ESTATE SALE SERVICE— Estate Sales & Appraisals

Experienced, sensitive estate sales in and out of Mistletoe Heights since 1992. Certified Appraiser, International Society of Appraisers; Appraisals for insurance, estate evaluations, donations, whatever you needs.

Contact: Terri Ellis. Mistletoe Estate Sales, 817-926-9424 or email

tquilts@airmail.net

KIDS COLORING SECTION



ATTENTION: Mistletoe Heights Residents Who Are Ready to Get REAL (and Lasting) Weight Loss and Fitness Results as Quickly as Possible with 100% Certainty

- Lose 8-12 lbs. of unwanted weight
- Burn off 3-6% of your bodyfat
- Lose 2-4 inches in your waist
- Look & feel better than you have in years
- In 4 weeks or less!
- Unconditional money-back guarantee



Casie Babineaux

Oil and Gas Researcher, Fort Worth

"I couldn't get myself to go to the gym – that's why I joined the program. I dropped 7 lbs. of bodyfat and 7 total inches in only 3 weeks. I have way more energy now. Before camp I was having trouble getting out of bed in the morning and now I jump up the minute the

alarm sounds. The Body Firm boot camp works and there are people here that are going to help you accomplish your goals. It's great!"

Try The Body Firm's Boot Camp and get:

- How to fire up your metabolism with 3 simple SECRETS. (*The weight loss industry doesn't want you to know!*)
- How to sculpt a leaner, tighter body that you can be proud of. (*Throw away your "big" clothes because you won't be going back!*)
- The best way to exercise to lose pounds and inches and revitalize your body. (*It's not what the media would have you believe.*)
- How too much cardiovascular exercise can actually make you fatter. (*Not to mention . . . B O R I N G!*)
- Why eating less and exercising more is a prescription for failure. (*"Yo-Yo Dieting" comes from this.*)



You will have a great time and you'll reap the benefits of this 4-week fitness boot camp.

If you're ready to start reshaping your body in a Fun, No-Judgment, Non-Threatening, Supportive Environment – we're ready to help!

Come join us for lots of R-E-S-U-L-T-S!



Kim Speairs (mother of two)

Advertising and Public Relations, Fort Worth

"I've lost 10 lbs. of bodyfat, 7 lbs. on the scale and several inches all over. Clothes are fitting better, I have more energy and stamina, and it helped with reducing my stress. It's been wonderful.

For less than \$50 per week, you'll get:

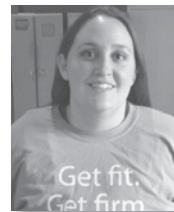
- 3 workouts per week with a Degreed, Nationally-Certified Fitness Coach = \$240 value
- A Nutritional Crash Course that will destroy fitness myths and help get you on the right path to eating healthier, more nutritious meals = \$129 value
- Unlimited e-mail support = Priceless



Grab a friend or neighbor and make your reservation now.

Busy schedule? That's okay – we offer early morning AND early evening boot camps to fit your before- or after-work schedule.

You'll work hard and have a great time doing it. You'll get lifestyle-changing information and action that will equip you with the tools you need to reshape your body and your thinking about fitness and nutrition.



Pam Musslewhite

Forensic Graduate Student, Fort Worth

"I've lost 13 lbs. and 7 inches in less than 4 weeks! The group supported each other and we pushed each other to do just a little better each time. Even if you have never worked out in your life you can do this!"

Okay, I'm ready. What do I do next?

Register NOW to reserve your spot at FortWorthfitnesscamp.com. Space is limited to the first 20 registrants.

Not ready yet?

Download your FREE report **The Five Biggest Weight Loss and Fitness Myths**



FORTWORTHFITNESSCAMP.COM

817.320.0743 ■ Get fit. Get firm. Get fired up.