



# The Mistletoe Express

A Publication of Historic Mistletoe Heights

www.mistletoeheights.com

November 2005



Jim Bradbury

## Letter from the president

We're about to close out the year here in Mistletoe Heights and we've a good deal to think about for the coming year.

We're very pleased to welcome Mike Windsor aboard as neighborhood liaison with the city of Fort Worth. He has already been

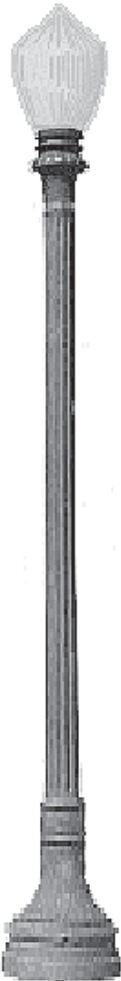
at work and will be providing us with pertinent information from the city. In addition, Mike will be a contact for neighborhood issues that need to be addressed to a city department. Mike brings significant experience to this role and we're lucky to have him.

This neighborhood is founded upon the virtues of the past. The houses were constructed carefully and no two are alike. But as every one of us knows, it took years of work by the early owners in the neighborhood to preserve what we

enjoy today. Preserving the past requires us to keep one eye on the future.

Fort Worth is undergoing record development and that's to be applauded. Yet, attention to historical significance and green spaces can be quickly lost in the hurry toward new projects. We have an obligation to participate to ensure that our neighborhood and Fort Worth generally are developed with an eye toward those elements that make us

continued on page 2



## GREAT GOURDS! AND THE WINNER IS...

The Grand Prize goes to 2343 Mistletoe Boulevard for the *Cubist Pumpkin* entrant. It featured a pumpkin with a free-form design carved by a child along with several other great gourds.

(More on page 5)

## STREETLIGHT BOW-TYING PARTY

Each Thanksgiving, neighbors gather at Gay and Martin Herring's home to visit, have refreshments and cut ribbon and greenery for decorating our streetlights. Please come help us get the neighborhood ready for Christmas. Many hands make this a fun chore.

We'll start at 3 in the afternoon (you can come late and leave when you please). If there are a bunch of neighbors it will take about an hour; if not, it becomes a chore.

**JOIN US PLEASE! AND BRING A NEW NEIGHBOR!**

When: **Sunday, November 27, 3 p.m.**

(the Sunday before Thanksgiving)

Where: **Gay and Martin Herring's Home** (2336 Irwin)



## NOVEMBER CALENDAR

**November 27, 3 p.m.: Bow-Tying Party**

**November 29, 7 p.m.: Neighborhood meeting at Jim Brabdbury's home, 2337 Mistletoe Avenue. Agenda: Officer nominations/elections, and wine&cheese!**

unique. This will mean reading the newspaper more closely, calling City Hall for information and attending an evening meeting or two.

In the immediate proximity to Mistletoe Heights, we have the Rosedale Project, the 121 Project, the development at Forest Park Boulevard and Rosedale Street, and there are big plans for redeveloping the property east of University Drive to the banks of the Trinity River. I'm sure that you've seen the projects under way on Berry Street near TCU. Each of these projects will bring even more changes. But good city planning requires input from all sides.

The Mistletoe Heights Historic Preservation Committee has been hard at work once again on developing a new design for the entrance to the neighborhood at Forest Park and Rosedale. We've received many comments from neighbors interested in seeing an approach more in keeping our beautiful neighborhood, Berkeley and Park Place. Once we have a few solid designs, we'll be meeting with Berkeley and Park Place leaders to gain their thoughts and discuss a cooperative project. We'll report back to you, but, like all things in this world, this project will require a financial commitment.

If you're not already aware, Jim Peipert has agreed to assist Sevan Melikyan with the preparation of the monthly newsletter. My appreciation goes out to both of them for regularly turning out such a good product. In the coming months, you'll see some articles from a new writer, Paschal High School senior Zack Shlachter, who will be assisting us. If you have ideas for relevant and unique articles, please let Sevan, Jim or me know.

By now, I hope that it's old news that the Texas Commission on Environmental Quality has responded to the multitude of comments that were submitted at the public hearings on the proposed concrete batch plant. Now, TCEQ must determine whether anyone will be


granted a contested case hearing to determine possible adverse health effects. Our City Council member, Wendy Davis, and the Berkeley officers have been very helpful in keeping on top of this issue. Please stay tuned to see how you can help.

Don't forget the Christmas Party, which will be held Sunday, Dec. 18, at the beautiful home of Gerry and Meralen Tyson at 1351 Mistletoe Drive.

You know that you live in a great neighborhood when you run into one of your neighbors coming out of the same kolache shop in West, Texas, on a Monday at 2 in the afternoon.

**ANIMAL**  
**House**

A  
**PET-SITTING**  
Service



Loving  
Pet Care

Lonnie & James Stack  
**(817) 370-1056**  
www.animalhousepetsitting.com  
Bonded & Insured

**Show Your Spirit**

LINDBERG®



**Ben Taylor Optical**  
1101 W. Rosedale • (817) 870-2061

**Have a Seat at Our Color Bar...**

NEWEST CONCEPTS  
IN HAIR COLOR:

- DIMENSIONAL COLOR
- BLOCK COLOR
- HI-LITES  
LO-LITES
- GREY BLENDING  
FOR MEN

817-923-1230  
711 W. Magnolia Ave.  
Fort Worth, TX 76104  
www.magnoliaavenuesalon.com

MAGNOLIA AVE. SALON

HAIR CUT & COLOR SPECIALISTS FOR MEN & WOMEN



## City liaison report

### By Mike Windsor

I've volunteered for the Mistletoe Heights Association's city liaison position, and I'd like to take a moment to introduce myself and to give the neighborhood a brief update.

My wife, Debra, and our almost 3-year-old daughter, Saffron, moved to 2307 Mistletoe Drive in July. I could describe our house as the little gray one, but it's easier to say that our back yard neighbor is the apartment building on Park Place.

I'm an attorney in "general civil practice." Over the years, I've dealt with city, county and state government for many reasons, but that usually boils

down to stopping the government from doing something, or getting the best deal you can when the government plans to do something.

I've found that, in dealing with any level of government, most people are glad that you're interested in what they're doing, and most of them want to help you if they can.

I met with Kristi Wiseman, assistant to Councilwoman Wendy Davis, and Angie Rush of the Fort Worth Community Relations Department. I've also called several other people involved in various projects. Here are items of note:

**Concrete batch plant and Rosedale improvements:** A few houses fall within the distance requirements for taking additional action on the batch plant. The homeowners, however, have apparently been less than active in the community. Councilwoman Davis is trying to set a meeting with those homeowners to get them involved. Progress updates on the Rosedale improvements can be found on the city's Web site. Once the batch plant issue is solved, the Rosedale construction should move quicker.

**Southwest Parkway:** As of now, plans are still in place for noise and light reduction, including no lights on the bridge. There's also a plan for additional landscaping at Forest Park Boulevard and beneath the bridge.

**Alley abandonment:** Fort Worth has a pilot project to abandon alleys and transfer them to residents whose property is adjacent to the alleys. The program is on a first-come, first-served basis "for as long as funding lasts." The program currently requires that all residents adjacent to alleys sign the necessary paperwork before the city will transfer the property, but that requirement may be modified in the near future. No alley can be transferred if any resident requires the alley for access to a garage, shop or storage building. There may also be problems if a utility requires a right of way (the alley might not be transferred, or the transfer might be

subject to a utility easement). If anyone is interested, let me know and I'll contact the city. The city representative will then check the map, drive the area, and determine if an alley is a candidate for transfer. The transfers can be done on an alley-by-alley basis. We wouldn't be required to transfer

every alley in the area.

**City charter revision:** The most important current issue in the city is revision of the City Charter (Fort Worth's "constitution"). Proposed changes include higher pay for the mayor and City Council, term limits and staggered elections. The city of Fort Worth wants citizen comments, and several public meetings are scheduled.

**Broken sidewalks and curbs/Forest Park traffic:** All of these issues are handled through the Transportation and Public Works Department. Sidewalk repair is a low to no-priority item for the city. Curbs usually get fixed when streets are repaired or resurfaced. If we have sidewalks that are especially bad, let me know, and I'll try to argue for some expedited repairs on a case-by-case basis.

Unfortunately, Forest Park Boulevard is one of the most direct feeders into downtown, and the volume of traffic isn't going to decrease. If you're concerned about the speed of traffic along Forest Park, the quickest way to address that problem is through the Fort Worth Police Department. Fort Worth is behind in repairing and installing traffic-control devices, so there's an involved process for getting new signals to slow traffic. If people think that speeding is a problem, and if the police are not addressing the problem, let me know.

**General city announcements:** A huge amount of information is available on the city of Fort Worth Web site: <http://ci.fortworth.tx.us/> The city is going to try to make the Web site more user-friendly by the end of the year.

I can be reached at the following numbers: (817) 377-0060 (work) and (817) 927-8944 (home).



**John R. Boyd, CTC**  
Owner

2800 S. Hulen  
Fort Worth, Texas 76109 (817) 921-5561



# Treasurer's Report

By Alex Blanton

As of Oct. 5, the balance for the Mistletoe Heights Association stood at \$10,447.65. Our current approved expenditures are \$5,000 for the neighborhood guide book project and \$4,000 (approved at the Sept. 20 association meeting) to improve the entrance to the neighborhood.


That leaves us with a net balance of \$1,447.65, which I feel is a healthy level of liquidity for the association.

We basically break even on the newsletter. Some months we make less than \$100; other months we lose less than \$100, depending on the number of ads and pages in the newsletter. And we had dues contributions this year of \$4,227. That was very close to (but slightly under) the level of participation last year.

Here's some of the feedback we received on the forms inserted in the dues envelopes:

- "Repeal overlay."
- "Regular police patrols in the neighborhood."
- "Electronic directory on Web page."
- "Put out a flier notice just prior to pot luck or special occasion."
- "No freeways or major thoroughfares."
- "None! I love being part of this wonderful neighborhood! Keep up the great work!"
- "None. I love our neighborhood and our neighbors."
- "3 ft. picket fence around Newby Park."
- "Do something to beautify the corner of Forest Park and Rosedale."
- "Trim overgrown trees and shrubs."
- "I think we need to implement windshield stickers to identify residents of MHA."
- "We would love for the Association to encourage a 'porch light initiative' to light up our streets at night. Many of our streets are so dark!"
- "Better advertisement in *Star-Telegram* for the neighborhood garage sale!"
- "Thanks for the envelope. I think it makes this bill better to schedule for payment."
- "Doggie bag dispenser at The Triangle park on Mistletoe Drive to encourage dog owners to use them!"
- "Speed bumps on Mistletoe Drive."
- "We don't receive the neighborhood newsletter and would like to."
- "Speed bumps on Berkeley Place and Weatherbee."
- "Plant more plants and trees in the neighborhood."
- "None! Newsletter is great!!!"
- "Stain and seal slats on benches at the Triangle."

- "None! Great job!"
- "Build a playscape in the Triangle."
- "Playground improvements for Newby Park."
- "Improve entrance to neighborhood with better signage, paint walls, etc."
- "Make parking one side only on Mistletoe Drive past Wendy's house. The construction workers parked in that area the last several months have made driving very dangerous. Too many cars parked on street. Why is shelter needed in Newby Park? I seldom see anyone there. A shelter on The Triangle would be used more."



## Straight Line Painting

Tom Long  
Owner

Call for free estimates: 817-832-2053  
Serving Fort Worth/Metroplex Cert # A203015153

## ❖ Rich's A+ Tile ❖

PROFESSIONAL INSTALLATION  
When results are everything ...

- ◆ Ceramic & Natural Stone
- ◆ Interior & Exterior
- ◆ Bathrooms, Kitchens, Fireplaces
- ◆ Patios, Walkways & More
- ◆ Shower Tear-out & Rebuild

I specialize in vintage homes.  
References & Photos Available

**I guarantee my work.**

**817 921-5607**

❖ **Ask for Rich** ❖  
**Rich's A+ Tile**

# LETTER FROM ENGLAND

By Kathryn Hansen

Hello, friends and neighbors in Mistletoe Heights! I was asked by the wonderful editors of *The Mistletoe Express* to write a little bit about how we celebrate Thanksgiving here as expatriate Americans, and how we're finding life in general here in the blustery northwest of England.

Since we moved to England, we've celebrated Thanksgiving twice each year.

The American expats of northwest England have an annual Thanksgiving dinner, attended by a large number of expat Americans and Canadians. This dinner is held at a posh country club and includes a wonderful silent auction, a quiz (which no festive English event would be without!) and lots of prizes for such categories as who is the most recent arrival, who has lived in the United Kingdom the longest, etc.

The chefs do their best to replicate an American Thanksgiving feast, usually with somewhat dubious results. They've managed to get the turkey, gravy and dressing down pretty well, but always seem to muddle things up a bit by adding random English tidbits, such as strange little sausages called "chipolatas," which always seem to pop up no matter how many times we ask them to PLEASE leave them off!

For some reason, pumpkin pies seem to intimidate (or is it repulse?) the pastry chef. We are therefore required to bake our own pumpkin pies for the event. Canned pumpkin is available only from an American food mail order company in London, or in the tiny American food section of a pricey department store called Selfridges, for the equivalent of around \$9 a can!

We also celebrate Thanksgiving in our own home by inviting a few close British friends for dinner. They really seem to enjoy the event (other than the pumpkin pie, which they all try to find polite ways of avoiding), and start hinting

months in advance that they hope we will be celebrating "Turkey Day" again this year!

As my Lilliputian Euro-style oven doesn't even come close to being able to handle a whole turkey, my landlady and best buddy cooks the bird in her Aga and then brings it down to our house.

If you're not familiar with Agas, they are THE status symbol for all upper-class English kitchens! If you don't

own an Aga, dahling, you are simply "common," which is a very cruel label, indeed!

Agas are ghastly monstrosities the size of a small automobile. They have no knobs to control temperatures, but rather several different oven cavities and hot metal plates of varying sizes as a stove top.

The thing can't be turned off, so the kitchen is always at blast-furnace temperatures. It runs on coal or oil, and must be serviced quite frequently by the "Aga man." Brit-woman loves nothing more than casually dropping to her friends, "I simply MUST have my Aga serviced!" An Aga could only have been invented by the British, as it is so incredibly user-unfriendly and complicated.

The cooking of the turkey is a nice segue into one of the many Brit practices that we Yanks find extremely distressing: Brit hygiene, or the lack thereof.

Here's a Thanksgiving anecdote to illustrate what I mean. At our first Thanksgiving in England, after our guests had devoured the turkey and all the trimmings, my neighbor brought in a bucket and instructed us to rake into it whatever was left on our plates because she wanted to make soup.

As I'd had several glasses of wine, I thought maybe I had misunderstood her. "You mean you want the leftovers for the soup," I asked, attempting to clarify the situation. "Oh no, what's left on the plates will make a lovely soup," she replied.





The Hensons met the Reynolds in a Paris restaurant

As I watched all of the gnawed turkey bones, picked-over peas and gravy-soaked stuffing go into the bucket, I made a mental note to refuse any soup served by this neighbor over the next few days.

A couple of weeks later, I reluctantly agreed to be a beater on a pheasant shoot for the same neighbor. I loathe hunting, but I do eat meat, so I told myself to stop being a hypocrite and try to enjoy the day out in the beautiful English countryside.

After a morning of half-heartedly beating the trees and bushes to scare out the pheasants, I joined the shooters in the field for a nice, hot cup of tea. At this point, our lady-of-the-bucket gleefully announced, "I've made a lovely soup from the leftovers of Kathryn's Thanksgiving dinner! It's just delightful – it's been maturing in my refrigerator for two weeks now!"

I desperately tried to think of a way to get out of drinking the cup that was hastily thrust into my hands, but, alas, the cold must have numbed my brain. I simply couldn't think of anything to do but take a sip, smile and say "yummy."

As the others slurped up the rancid soup and tended to the dogs, I quietly backed up to a shrub and poured out the contents of my cup.

"More soup?" she enthusiastically asked me, amazed at how quickly I'd gobbled the first cup. "Oh, I couldn't possibly. I want to make sure the shooters get their fill."

As I said, my sympathies were entirely with the pheasants!

I could write a book about the things that drive us completely mad here, but the truth is that this has been a fantastic experience for all three of us.

We miss Fort Worth and Mistletoe Heights terribly, but things like sipping Bellinis at Harry's Bar in Venice, nipping down to Paris with a few friends to do a bit of Christmas shopping and drinking champagne by Berlin's Brandenburg Gate on New Year's Eve definitely do a lot to alleviate our homesickness!

We will be ecstatic to return home for good some day — but not just yet.

Wishing  
You the  
Happiest of  
*Thanksgiving Holidays*

"Develop an attitude of gratitude, and give thanks for everything that happens to you, knowing that every step forward is a step toward achieving something bigger and better than your current situation." – Brian Tracy

At Edward Jones, we're grateful for your business and look forward to continuing to work with you to create and implement investment plans designed to help you achieve your long-term financial goals.

**To learn more, call or stop by today.**

<p><b>John Berry</b> 1701 River Run Road, Suite 609 Fort Worth, Texas 76107 817-348-8866</p>	<p><b>Bruce C. Border, CFP</b> 2453 Forest Park Blvd. Fort Worth, Texas 76110 817-926-8056</p>
--	--

**Edward Jones**  
Serving Individual Investors Since 1871

**CRIMINAL DEFENSE**

**Daniel L. Young**  
ATTORNEY AT LAW

*Board Certified, Criminal Law, Texas Board of Legal Specialization*

**817/877-3400**  
2630 West Freeway, Suite 208  
www.danielyoungattorney.com

*Adult & Juvenile Felonies and Misdemeanors*



# Victoria Bradshaw

By Liz Stevens

“So, you’re the first person to interview Victoria Bradshaw,” says Victoria Bradshaw, sitting on her living room sofa.

“You’ll be famous,” she tells the *Express Yourself* reporter. “So will I.”

Victoria’s self-confidence is seemingly indestructible, and, for a 17-year-old girl, a little surprising. Instead of being caught up in the typical social web of friends, guys, homecoming and college applications, Victoria, a senior at Paschal High School, has quietly pursued her own unwavering course toward a life of creativity.

She plays music, she paints, she writes. She excels, she says, at “understanding people and feeling their emotions.” And isn’t that what artists ultimately try to do, she asks rhetorically: move people?

Victoria moved to Texas from Shreveport, La., when she was 4. She’s lived in Mistletoe Heights for seven or eight years. In fifth grade, at Lily B. Clayton, she took up the violin and now plays in Paschal’s varsity orchestra.

But violin is only one musical pursuit. A few years ago, she asked for and received an accordion for Christmas. She wrote her first piano piece when she was 12, even though she didn’t (and still doesn’t) read piano music. In her upstairs music room, electric and acoustic guitars rest near a cello and electric keyboard.

“If I could own every instrument in the world, I would,” she says.

Writing movie scores is her dream job. “My problem is I don’t have much technical theory behind me,” she notes. But she certainly doesn’t lack in drive.

A painting rests on an easel in the music room, too. A sculpted clay head with a distorted mouth sits nearby. Since her older brothers and sisters moved out of the house, Victoria, the youngest sibling, has turned their former bedrooms into her studios. She has a box of

paints in one and has refashioned another into a sewing room.

When asked about applying to schools for next year, Victoria replies that she doesn’t want to rush that. Kids these days, she says, are too eager to go to college. She wants to experience life a little more first.

On occasion, Victoria will lend a hand at her family’s business, a wood manufacturing company in Fort Worth. All four of her older brothers and sisters work there. “If I go to work, it’s like a family reunion,” she notes.

She also babysits. Actually, *Express Yourself* knows first hand that Victoria is a world-class babysitter. Her mother has noted that ever since she was young, Victoria has had a knack with kids. “Their world is so curious right now,” Victoria remarks. “Kids are so free. They don’t know rules yet.”

But Victoria hasn’t let any of those intangible rules dictate her

path, either. That can be both good and bad, she notes.

“You walk differently” when you know who you are and where you’re going, she says of herself.

On the other hand, “If I had another me, I’d probably not get along with her.”



Victoria Bradshaw

ESTABLISHED 1992

DESIGNER'S  
RESOURCE  
STUDIO



...AND WE'RE IN THE  
NEIGHBORHOOD!

**Custom Picture  
Framing**  
Expert Design Assistance  
Conservation Materials  
Artwork  
Photographs  
Memorabilia

1612 Park Place  
(817) 922-9048

## MISTLETOE HEIGHTS HISTORY

*First of a series*

By Wyatt Teague

I have been asked to write some history about Mistletoe Heights. It would seem appropriate to write some for a series of publications of *The Mistletoe Express*. Because a great number of our neighbors are not native Texans, I think that the beginning should be at the early days of Texas.

On March 6, 1836, Texas gained independence from Mexico, and the Republic of Texas was created. The Texas Legislature, on Feb. 4, 1841, passed an act "granting land to immigrants."

The first contract signed (Aug. 30, 1841) by the Republic of Texas under this act was with the Texas Land and Emigration Company. This company was formed by 20 investors headed by William S. Peters.

The first contract established the boundaries for a colony, beginning on the Red River at the mouth of Big Mineral Creek, running south for 60 miles, then west 22 miles, then north to the Red River, then east along the river to the point of origin.

This tract was commonly known as Peters' Colony. Additional contracts for the Peters' Colony were made along the eastern boundary, extending south to somewhere in what is now Ellis County, then west – in my imagination, since I have no records of such – to about the Johnson-Hood county line and then north to the Red River and east to the original contract corner.

On Dec. 29, 1845, Texas became a state and a part of the United States of America.

Because of the need for colonial protection, Gen. William Jenkins Worth, stationed in San Antonio, commissioned Brevet Maj. Ripley A. Arnold in 1849 to establish an Army post. The site picked was near the confluence of the Clear and West forks of the Trinity River. It later became Fort Worth.

*More anon*

## Gardening with Patsy Slocum

How about a touch of color for winter?

Bulbs can be forced in about 12 to 15 weeks, and they provide a touch of color for wintertime. If you start daffodil bulbs now, they'll be blooming soon at your windowsill.

It's important to buy dense, large bulbs. They can be purchased at your favorite nursery or large retailers that deal in garden supplies.

Plant the bulbs in a pot filled with soil mix, making sure that the tops of the bulbs will be just at the top of the pot. Place as many bulbs as you can in the pot with the large part of the bulb down.

Bulbs should be touching. Cover them with soil, water them, and place in the refrigerator for 12 to 15 weeks. Be sure and check every two weeks or so to see if the soil is still moist.

When the first shoots appear, take the pot out and set in direct sunlight, but not where it will get too hot. When you see green shoots, you can transfer to a sunny window and soon you'll have beautiful blooms.

Be sure to check and keep the soil moist during this time.



## Time doesn't stand still

But you can make your memories last. I can teach you how to safely preserve your photos and stories in keepsake, scrapbook photo albums to enjoy for generations.

Call me today:

**Victoria Dewhirst**  
INDEPENDENT CONSULTANT  
Berkeley Resident  
Fort Worth, TX 76110  
Phone: (817) 927-0758  
vmdewhirst@earthlink.net

  
*Memory Keeping at Its Best*

Personal Assistance • Design  
Photo-Book Albums • Supplies • Classes  
www.victoriadewhirst.com



# Great Gourds!

By Steve McReynolds

On the evening before Halloween the dedicated Mistletoe Pumpkin Perusers hit the streets. Many amazing works delighted us. We are sad to report the continuing slump in numbers of real pumpkins that were carved --- apparently new this year are Styrofoam pumpkins that you can carve, but the gourd judges were not buying into that perversion.



Cubist Pumpkin

A close runner-up to the Grand Prize "Cubist Pumpkin," was across the street at 2342 Mistletoe Blvd. where another free-form entrant which looked either like Gumby or a fungshei symbol was found.



Gumby



Texas Hold'em

## Other Great Gourds:

- Bat eyes and Skelecat* – 2210 Weatherbee
- Happy Serrated Couple* – 2232 Edwin
- The Howling & Nessie* – 2225 Edwin
- Isosceles/Tradition* 2205 Irwin
- Ghostly Boo* – 2212 Rosedale
- Felix Family* – 2321 Rosedale
- Unibrow Headache #21* - 2336 Irwin
- The Smirky Twosome* - 2320 Irwin
- Rove in Jail* – 2312 Irwin
- Astonished Cartoon* - 2308 Mistletoe Blvd.

## Carved Kingdom

– 2318 Mistletoe Blvd.

## Candy Corn

– 2345 Mistletoe Blvd.

## Snaggle

– 1119 Clara

## The Barred Pumpkins

– 1206 Mistletoe Dr.

## Baby Teeth Tradtrio

– 1211 Clara

## Scaredy Cat &

*Arachnid* – 2306 Harrison

## Texas Hold'em

– 2337 Mistletoe Blvd.

## Family Pumpkins

– 1424 Mistletoe Dr.

## Cinderella & Orange Fang

– 2312 Edwin

## The Scream

– 2330 Mistletoe Dr.

## Two Toothed Talkers

– 2317 Magnolia

## Doublevision-Lobotomy

– 1208 Clara



Toxic Waste

Non-carved but elaborately decorated porches abounded, and although not part of the contest, are certainly delightful contributions to the season in Mistletoe Heights. The judges decided to revive the TXU electric award and give it to the Kellys at 1100 Buck for their display. And if you missed the Toxic Waste and Bird Flu spread at 2200 Magnolia then you missed the winner of our Nuclear Creative division. This amazing tradition will continue and the Heights looked great. I bet Christmas will also be gorgeous...

GO FOR IT NEIGHBORS!



COMMITTED TO EXCELLENCE  
 IN SERVING YOU, OUR CLIENT AND NEIGHBOR

*for 46 years.*



WE KNOW FORT WORTH.

TRUST OUR REPUTATION.  
 COUNT ON OUR CHARACTER.

---

HELEN PAINTER ASSOCIATES READY TO SERVE YOU

Amy Cook	Dick Holmes	Lori Gallagher
Barbara Worthley	Dmitry Golub	Lund May O'Toole
Bill Worthley	Fred Bach	Mark Montroy
Betty Palmer	Jan Aziz	Martha Gensheimer
Brent Clemens	Judy Holland	Mimi Klutz
Carmen Nelon	Julie Wilkins	Rhona Raffel
Cathy Taylor	Kathy Ferguson	C. Scott Watts
Cindy Hoover	Lara Conn	Sheila Patrick
Debbie Norris	Laura Lumley	Tracy Hollis

---

2242 Forest Park Boulevard\_\_Fort Worth, Texas 76110\_\_817.923.7321

[www.helenpainter.com](http://www.helenpainter.com)



Here are excerpts and/or summaries of the neighborhood emails since the last issue.

From the police:

Your neighbors may want to attend this meeting.

The Fort Worth Police Department will hold a police awareness forum:

TUESDAY, NOVEMBER 15, 2005

7:00 PM until 8:00 PM

GRACE LUTHERAN

CHURCH

7900 MCCART AVENUE

This forum will be conducted to:

- Build a better verbal dialogue between the community and the Police Department.
- Maintain continuous relationship and address the various concerns of the community.

In this meeting, community groups and residents will have the opportunity to hear about the latest projects, programs, ask questions and give feedback to numerous police officials. Chief of Police, Ralph Mendoza, and other Police Department representatives will attend the forum.

Because you care about what happens in your neighborhood, please attend. For more information, please contact officer Sharron Neal at 817-392-4215.

From the Police:

• Recently we have received several questions from neighbors who have seen a female transient passing through the neighborhood, and in some cases suspicions that this person was taking up residence in empty homes that were for sale or the garages of those same homes.

• The person in question is a female wearing a multi-colored jacket, mid-calf dress, high-top sneakers and some form of shawl. She has been seen going to and from the gravel road at the intersection of Mistletoe Drive and West Rosedale South. The NPOs have asked that anyone who sees her please report time and place either through email or contacting the NPOs directly. If you suspect she is trespassing, please call the FWPD non-emergency number (817-335-4222) and request an officer.

• West side NPO is Officer Kirk Byrom 817-871-5471 Office 817-992-0185 Mobile kirk.byrom@fortworthgov.org

• East side NPO is Officer Leah Wagner 817-871-8948 (Office), leah.wagner@fortworthgov.org.

About the Police:

Jim Bradbury and I [Tom Richey] met with our new west side NPO, Officer Kirk Byrom, earlier today to talk about the neighborhood and what we may see as problems that he could help us solve. The main issues remain the

petty crime and homeless population. Officer Byrom has been working on the homeless situation since taking over from Officer Carrell and has pledged to stay on the situation. We also discussed a variety of potential sources that cause the homeless to be attracted to this area and Officer Byrom will look into those arenas as well. He reiterated that if citizens see anything at all that cause them alarm, or look suspicious, to immediately call the FWPD non-emergency number (817-335-4222),

and not only report it but to request an officer be dispatched to the scene. We all have to work together to ensure our collective well-being.

Please join us in welcoming Officer Byrom to the neighborhood.

Officer K.A, Byrom  
817-871-5471 Office  
817-992-0185 Mobile  
817-998-0689 Pager  
kirk.byrom@fortworthgov.org

Pets:

Our daughter works at ABC Animal Clinic, and she rescued a two year old, male, miniature, dapple dachshund. She had him neutered and his shots are up to date. She just needs to place him in a good home that can give him lots of love and attention

email: cbenso29@msn.com or 817-921-4000

## E-Chat



**Best Target Advertising Around!**

Reach the people of Mistletoe Heights.

Call Nancy Brown to advertise your business today.

**817-923-7146**



# CHEERS TO THE NEW PAVILION



Shaded by the new pavilion, our own District 9 City Council member, Wendy Davis, joined by Friends of Newby Park committee chair, Patsy “the hammer” Slocum, to lead the grand opening ceremonies. Complete with ribbon cutting fanfare, the Newby Park pavilion was officially presented to the city of Fort Worth on Saturday, October 22nd.

The idea for the project began about two years

ago. Now many donations and fundraisers later, the handsome structure is a reality. Reminiscent of a turn-of-the-century train depot, the pavilion’s outstanding rustic design was a gift from renowned local architect, Karl Kamatsu. Most of us agreed the pavilion fit its surroundings so perfectly—you’d swear it had always been part of the park. And now it will be, to the pleasure of generations to come.



From left to right: Patsy Slocum, cutting the ceremonial ribbon, Gaye Reed, Jim Bradbury, Martin Herring, and Tom Hale.



Councilwoman Wendy Davis and Patsy Slocum



The Dirty Martinis: Andrew Marton on the keyboards; Scott Ferree, guitar; Sevan Melikyan, drums; and Michael Bennett.



John Key and family: Jackson and Michelle



The bluegrass band Lonesome Prairie, featuring Mistletoe Heights resident John Scott, banjo, opened the festivities. The other members of the band are Leon Joplin, Steve Mary, Randol Blanton, and Paul Cherryholms.

*“The music was FUN. We didn’t get back to town in time to hear the 1st set, but thoroughly enjoyed what we did hear. Looking forward to many more celebrations and fun!”*

Neighbors Lysta and Barry

*Photos by Gaye and Martin Herring.*

The “Friends of Newby Park” appreciated all the loyal support from our neighborhood and other parts of the city during the celebration on Saturday evening, October 22, 2005. The bands lent a wonderful atmosphere and everyone seemed to enjoy the different styles of music. Again, we thank our many supporters, brick buyers, corporate donors, city and TIF funding, and

the wonderful in-kind donations.

The total out-of-pocket cost for the pavilion exceeded our budget due to increases in material, so we were unable to purchase some planned amenities such as picnic tables, benches, and more landscaping. Several have asked about the sale of more engraved bricks. We will be doing that, and we need your help.

**ENGRAVED BRICK APPLICATION:**

Please print your message(s) below to include up to 3 lines of text with a maximum of 13 spaces per line per brick (spacing and punctuation included)

_____	_____
_____	_____
_____	_____

**Make checks payable to: Friends of Newby Park.  
Mail checks to 2218 W. Rosedale St. South, Fort Worth, TX 76110.**



# Paschal Panthers' Shining Star: Jess Brown

By Zack Shlachter

Paschal High School hasn't been a good source for Friday night lights in years.

Most recently, its athletic teams have been placed in tough competition in Class 5A because of the school's size.

Of the 2,200 students at Paschal, only a handful play football. The team really gets the short end of the stick when competing against teams that sometimes have twice as many players.

In spite of these setbacks, Paschal football is once again enjoyable — mostly because of the individual successes of its quarterback, Mistletoe Heights resident Jess Brown. Brown, a senior, was spotlighted by *The Star-Telegram* as one of the best Panther athletes since those created by novelist Dan Jenkins.

Through the fifth game of this season, Brown was first in the district for rushing. After the team's seventh game, he was second in both rushing and scoring.

As of Oct. 28, with its 35-12 loss to Boswell, Paschal's record was 2-7. Brown was ninth in both rushing and scoring, with 964 yards and 78 points, according to individual player stats in the Nov. 1 *Star-Telegram*.

But bear in mind that Paschal had just four wins in the previous three seasons. The season before Brown's freshman year, the team didn't have a single win.

His most unforgettable moment of the season thus far?

"Winning in overtime against Bryan Adams with five touchdowns and 180 yards rushing," Brown replied.

The edge-of-the-seat game was Paschal's homecoming, which hadn't seen a victory in seven years.

With such statistics on the field and a decent GPA, Brown began receiving letters last season from Ivy League schools encouraging him to apply. At this point, it's certain he'll apply to the University of Texas at Austin and Texas Tech, the alma mater of his father, Spencer.

Other than that, he'll await football offers and begin studying college teams' offensive patterns.

"I look at the offenses because, if I'm going to be recruited as a quarterback, I have to know I'd fit in," he says.

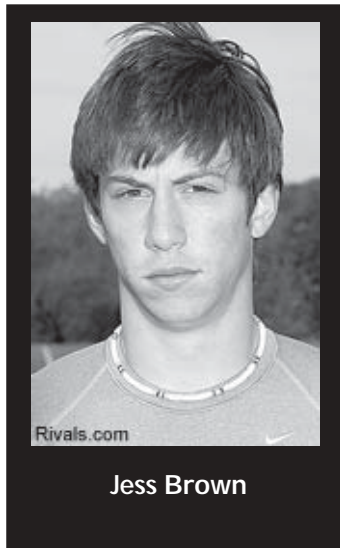
He also plays baseball for Paschal and bass guitar for a hard rock band comprising fellow Paschal seniors, Two Times Lost — though not named after the football team's dismal record. But, in spite of that record, he has learned a lot from the team and its coaches.

"My work ethic is amazing now, most of the time," Brown says. "The coaches put the right attitude in me, what it takes to win. Everybody has to work together."

Jess has lived most of his life in Mistletoe Heights — first on Mistletoe Drive for part

of his elementary and middle school years. It was here that he was able to develop athletically, thanks to a huge lawn. "My buddies and I would play every sport from football and baseball to soccer, kick-ball and wrestling in my front yard and at The Triangle," he recalls.

"We were so enthusiastic with sports that we snuck into my neighbor's back yard to play basketball and wall-ball when they weren't home, or weren't paying attention. We even broke their fence when trying to get enough air to dunk, and never told them," he says, laughing. "Sorry."



Jess Brown

**B & Company Design**  
Residential Historical Commercial

Brenda Owen Ray  
Design Consultant

817.923.3252  
817.223.8613

**The Artful Hand**  
helping to turn your space into  
your own special place  
Paisley Collection from  
Siyeh Studio, winner  
2004 Niche Award

6248 Capp Bowie • 817.738.4438 • www.artful-hand.com  
open Tuesday - Saturday 10-6 and Sunday 12-5



# END OF SUMMER BLOCK PARTY

By Cody Pender

The theme was: Chill out! Maybe it will finally cool down if we have a “Summer is Over” party.

And the Oct. 1 bash, hosted by Terri Bonow and facilitated by party maven Tanya Dohoney, was a rousing romp of merriment.

The festivities got started around 7 o’clock when Terri introduced the band, Mistletoe Heights’ very own rock phenomenon, The Japers, and explained their name – “one who japes: jokes, quips, or makes sport of.”

They kicked off their set with a blazing original, Showtime, tortuously reminiscent of the James Brown theme song, and segued into the Burt Bacharach chestnut Any Day Now.

The band’s CD release has been delayed by Hurricane Katrina, but that didn’t stop them from previewing several of the disc’s tunes, including Whiplash, a tribute to the monkey of the same name who has performed riding on the back of an Australian shepherd at the Fort Worth Stock Show Rodeo.

Strangely, the band sounded better the more the wine flowed. After a break in which copious amounts of food and wine were consumed, including delicious barbecue (prepared by culinary carnivore Frank Reuter) and several vegetarian options, The Japers hosted a field of jamming musicians and poets who transcended generational boundaries.

The youth of America was represented by a trio of girl singers ably led by Hilary Dohoney, singing and poetry from J.P. Scott and percussion assistance from Robert Melikyan. Banjo fury erupted as John Scott exploded into Rollin’ in My Sweet Baby’s Arms. The vocal stylings of Lisa Davis were a tantalizing preview to her brilliant cabaret performance at the Fifth

Avenue Performance Center the following Friday.

Keyboard whiz Jeffrey Gutcheon jumped up to provide assistance. Sevan Melikyan helped out Japers’ guitarist Tim Bonow and bassist Earl Johnson with the drumming, giving The Japers’ fill-in drummer, local punk rock drummer Isaac Johnson, a chance to circulate and enjoy the company.

After the Japers’ 1,000-watt blue spotlight blew out a circuit, Tanya Dohoney briefly remedied the lack of illumination by distributing sparklers, which capped off the evening.

I can resist the opportunity of punning that by this time everyone was pretty well lit anyway. That’s because the refined partygoers were all models of restraint and decorum. Several people observed that the block party concept is worthy of repeating. There was even a suggestion to block off the street next time, which was met with mischievous approval by all. How about it?



L-R: Jeff Meyer, Paul Beard, Tanya Dohoney, Lisa Davis and Maria Guralnik.



L-R: Earl Johnson, Hilary Dohoney, Ellie Stackhouse, Tim Bonow, and Jeffrey Gutcheon.

## I love my “gray Taco Bell”...

The gray mission-style bungalow on Harrison Avenue has been my home for almost 30 years. And Mistletoe Heights has always meant much more to me than just a convenient place to live.

I’m already your neighbor, I’d like to be your friend—and Realtor®.

While I may not have a drive-thru window, no one will work harder for you. After all, you know where I live!



*“I am truly your neighborhood Realtor®  
—do call me for your real estate needs”*  
Gaye Reed



(817) 921-8164  
gaye.reed@coldwellbanker.com



# Why a pavilion?

By Patsy Slocum

Webster's defines "pavilion" as a building, often partly open, for exhibits, etc., as at a fair or park.

I don't know if this aptly describes the dream I had for Newby Park when several in our neighborhood started talking about the possibility of a pavilion for the park.

For one thing, I was thinking about how nice it would be to have a covered place to hold meetings of the neighborhood association.

In the past, our association has planned family days in Newby Park. They sometimes worked out well, but other times the sun was beastly hot or it rained, or whatever. I thought how nice it would be if the association could plan to meet in the pavilion and not have to worry about the weather.

I thought how nice it would be to have family gatherings in a place at the park where we could eat our picnic lunches under a roof. The adults could sit back in their chairs in the shade and watch their children romp and play in the park.

I thought how nice it would be for a mother or father to take their children to the park playground and not have to sit in the sun. Even the children could bring their toys and play in the open shade.

I'm sure that other neighbors have thoughts of how to use the pavilion, as we seemed to have a lot of support and encouragement in planning and constructing the project.

So, the dream has come to pass, and I hope that all of the neighborhood will drive by to see it, stop to enjoy it, and maybe take time to dream about how to put the pavilion to use.

The pavilion may be used on a "first come, first served" basis, but the Fort Worth Parks and Community Services Department will give a confirmed reservation for an event for a set fee. The number to call is (817) 871-5757.

## J J Robb Real Estate Services

The Jeff and Rob Group



[www.jeffandrobb.com](http://www.jeffandrobb.com)

[www.oldspecialists.com](http://www.oldspecialists.com)

Office 817-924-8358

Fax 817-926-3065

### Specializing in Classic Older and Historic Properties

We know the area, the properties and the architecture. We also know all the ins and outs of older homes; financing, inspections, tax credits and historic guidelines. Most of all, we have an undeniable affection for the classic neighborhoods of historic south Fort Worth.

Our dedication to service and quality is evident in our many years of diligent work in promoting, developing and repopulating our urban village.

Call us when you are ready to sell, or when you are ready to find your *new* old home.

**1255 W. Magnolia Ave., Fort Worth, Texas**



## Yard of the Month: 2309 Edwin

by Patsy Slocum



The yard of the month for November is at the home of Tim and Rita Evans at 2309 Edwin.

Despite the extreme heat and lack of moisture that extended well into autumn, the Evans yard shows great TLC.

Across the front of the porch, the bank of impatiens in hot pink, red, orange and white shows up in sharp contrast to the dark green of the neatly trimmed holly shrubs.

Two large urns of begonias, pansies and fern stand guard at the steps to the porch, and each side is flanked by a fall display of variegated gourds, squash and corn. Pumpkins are spaced among the various potted plants on the front porch and an inviting chaise lounge swings at the center of the porch.

## HEARTWOOD FLOORING

Specializing in  
Custom and Standard  
Finishes

Mistletoe's preferred Floor installer  
and refinisher

for references contact  
J.J. Robb real estate  
(817) 924-8358

Stanton McKibbin, Owner

(817) 271-5802

## Breast Cancer Awareness Month. The perfect time to give your whole body some attention.



Not only can our 30-minute workout three times a week help diminish the risk of breast cancer, but if you join Curves the week of October 10th, we'll waive the service fee. All you have to do is show proof of a current mammogram. Because at Curves we care about you and your health. From head to toe.

**Curves**

The power to amaze yourself.™

Over 5,000 locations worldwide.

(817) 332-8783

1404 W. Magnolia Ave.  
Ft. Worth, TX 76104

817-869-5346

2739 S. Hulen  
Ft. Worth, TX 76109

©2004 Curves

**\$0**

**SERVICE FEE\***  
Bring proof of your  
current mammogram.

Photo: ©Curves Inc.

\*This deal is for 45-minute sessions (7 to 8 a.m. program). Not valid with any other offer. Valid only at participating location 10/10 - 10/16.



Batch Plant Update:

# Community objections rejected

On Oct. 10, the executive director of the Texas Commission on Environmental Quality dismissed all community objections to the concrete batch plant, stated that Sunmount Corp.'s application meets state requirements and sent formal responses to the public comments.

The commissioners now must make a final decision before a regularly scheduled public meeting.

Many neighborhood residents have expressed concern that the commission grants permits to companies that correctly fill out the permit applications, regardless of the legal history of the companies or what is being requested.

Wade Lane, Mistletoe Heights resident and environmental consultant,

commented at the April public meeting that Sunmount suggested in its application that the batch plant would be operating around the clock, and yet would produce exactly the legal limit of concrete and subsequent particulate matter emissions.

Of course, were Sunmount to really operate around the clock, it would produce a million more tons of concrete than the application suggested — and, needless to say, an illegal amount of emissions.

This argument showed the most promise, but the executive director argued on another technicality — explaining that the Rosedale job would require much less than the legal limit of 400,000 tons of concrete in cubic yards.

There is still hope, though. For the next 30 days, “affected persons” may request one more contested case.



A view of a typical concrete batch plant

**Home123<sup>®</sup>**  
 Cutting through the loan clutter

Malissa McGee  
 Loan Advisor  
 817-737-9551 ext 12  
 866-622-8151 fax  
 mmcgee@home123.com

“Let me help you get the loan you need.”

**Mo’Martre Gallery**  
 1622 Fifth Avenue at West Allen

Open Friday Nights Until 7  
 Starting in November

Next door to Arts Fifth Avenue  
 817-927-8877  
 www.mgspace.com/momartre

Family of Friends Coming  
 for the Holidays?

**THE  
 TEXAS WHITE HOUSE**  
*Bed and Breakfast*

Call about the special rates  
 for our “neighbors.”

817-923-3597

## **Neighborhood Classifieds**

**Babysitter:** Paschal student with CPR training available to babysit evenings and weekends. Call Jenny at 817-727-3285.

**I am your neighborhood handyman** and a master painter who has been a resident of this neighborhood for forty years. Low prices and prompt, reliable service. Call Tim McGinty at 817-926-1682.

### **Dreaming of a lush and Texas-tough landscape?**

Wanting to relax and unwind enjoying the flight of butterflies and hummingbirds? Seeking the aromatherapy of a night-blooming garden? Contact Alexia Strout-Dapaz at either (817) 921-4820 or at [astroutdapaz@yahoo.com](mailto:astroutdapaz@yahoo.com)

### **Early Childhood Music: Mistletoe Musikgarten**

Classes in SW Fort Worth and Hurst. With 8 years of experience, certifications in early childhood music, and a UNT music degree, I enjoy teaching children and families from birth to age 9. Call or e-mail for info about summer or fall classes. Carol Spencer at 817.927.3241 or [spenway@earthlink.net](mailto:spenway@earthlink.net).

**Estate Appraisals and Liquidation Service** Certified appraiser with the International Society of Appraisers, in business in Mistletoe Heights for over 10 years. Terri Ellis, Mistletoe Estate Sales, 926-9424.

**Arbonne~Swiss formulated products** pure, safe and beneficial for everyone. All of Arbonne's products are dermatologist tested, botanically-based, pH correct, hypoallergenic and formulated without animal bi-products, mineral oil, dye or fragrances. 45 day \$ back guarantee. No animal testing. For information call Joan at 817.920.1440 or email [4paws4@sbcglobal.net](mailto:4paws4@sbcglobal.net). New to Arbonne? Try a kit before you buy.

**Mary Kay Cosmetics** Paula Cady Russell at 2201 Mistletoe Blvd. is a Mary Kay consultant. Call her at 921-6377 for a free makeover, gift service or if you've "lost" your consultant.

**No Time for Your Yard?** Give me a call! I'm your Mistletoe Heights neighbor and I can offer you competitive pricing and plenty of references. Call Daniel Tice at 817-921-4651 or cell 817-707-1581.

**How to Get the Most Out of Your Estate Sale.** We are Vintage Sales, recognized in North Texas as being trusted, versatile and knowledgeable. Our experienced staff will handle every detail and help you get the most out of your estate sale. Phone Anne Bourland at 924-5959 for a consultation or email her at [apbourland@aol.com](mailto:apbourland@aol.com) to receive notices of upcoming events.

**Reading Tutor** Certified Teacher, reading specialty, available to help your child improve numerous reading skills. Very reasonable rates and personalized attention. Call Teri Brewer 817-924-6145.

**Avon** Edward Alvarez is YOUR local Neighborhood Avon Sales Rep. that would like to meet with any interested Mistletoe Heights friends, in your home or mine, that have any interests or questions about the current line of AVON products (including Skin-so-soft Bug Guard). Please contact Ed at 817-926-0908

Ads are free for Mistletoe Heights residents and may be submitted to the editor. The deadline is the 20th of each month. Ads must be renewed monthly except for service classifieds (i.e.: babysitting, mowing, etc.), which are renewed yearly. If you would like to renew, discontinue or update your ad, please notify the editor at 817-921-2120 or [twoearsup@charter.net](mailto:twoearsup@charter.net).



Laurie and Jamie McCoy (2301 Edwin St.) welcomed twins into the world on 9/10/05: Georgianna Evelyn and Edwin James. Laurie and Jamie love the neighborhood so much that their son shares their street name!



Mark your calendar...


*The Annual Mistletoe Heights Holiday Party*  
Sunday, December 5, 2004, 5-7 p.m.

at the home of Merelan and Gary Tyson, 1351 Mistletoe Drive

Please bring your favorite hors d'oeuvre or dessert to share with your neighbors.

## Helpful Phone Numbers, Emails Addresses and Websites

	Phone	Email	Website
<b>City Code Violations</b>	<b>392-1234</b>		
<b>City of Fort Worth</b>	<b>392-2255</b>		<b>www.fortworthgov.org</b>
<b>Police - Non-Emergency</b>	<b>335-4222</b>		
<b>Garage Sale Permits</b>	<b>392-7851</b>		
<b>Graffiti Abatement</b>	<b>212-2700</b>		
<b>Lily B. Clayton Elementary</b>	<b>922-6660</b>		<b>it.ftworth.isd.tenet.edu/116/</b>
<b>Paschal High School</b>	<b>922-6600</b>		
<b>Historical Preservation (Julie Lawless)</b>	<b>392-8012</b>	<b>julie.lawless@fortworthgov.org</b>	
<b>Southside Preservation Hall</b>	<b>926-2800</b>	<b>HallTess@earthlink.net</b>	<b>www.southsidepreservation.com</b>
<b>The T/Longhorn Trolley</b>	<b>215-8600</b>		<b>www.the-t.com</b>
<b>Trinity Railway Express</b>	<b>215-8600</b>		<b>www.trinityrailwayexpress.org</b>
<b>Wendy Davis - City Council District 9</b>	<b>392-8809</b>	<b>district9@fortworthgov.org</b>	<b>ci.fort-worth.tx.us</b>

MHA Officers	Street Reps (listed by blocks)		Publishing Information
<b>President</b>	<b>2200 W. Rosedale South</b>	<b>2100 Edwin</b>	<p style="text-align: center;"><b>EDITORIAL POLICY</b></p>  <p>Articles and letters to the Editor are welcomed. To be published as written, letters must be addressed to the Editor, signed and include a phone number. Anonymous letters will not be published. Articles may be submitted for publication, signed or unsigned, subject to approval and editing by the Editor. Letters to the Editor are limited to a half page (approximately 350 words). Please submit to <a href="mailto:twoearsup@charter.net">twoearsup@charter.net</a> or 1114 Buck Avenue. <b>The deadline is the 20th of each month.</b></p> <hr/> <p style="text-align: center;"><b>ADVERTISING INFORMATION</b></p> <p>To place an advertisement or for actual mechanical sizes, please call Nancy Brown at 923-7146. Ad rates are:</p> <p>Business card size \$18, 1/4 page \$36, 1/3 page \$54, half page \$61, full page \$120, and pre-printed 8-1/2 x 11 insert fliers \$60.</p> <p><b>The deadline is the 20th of each month.</b></p>
Jim Bradbury 924-9869	Carrie Johnson 926-9776	Lynn Herrera 926-9991	
<b>Vice-President</b>	<b>2300 W. Rosedale South</b>	<b>2200 Edwin</b>	
Tom Richey 923-7352	Kimberly Helixon 927-4641	Wyatt Teague 923-2330	
<b>Secretary</b>	<b>2200 Irwin</b>	<b>2300 Edwin</b>	
The Peiperts 926-4117	Gary Willis 924-4000	Tom Richey 923-7352	
<b>Treasurer</b>	<b>2300 Irwin</b>	<b>2100 Weatherbee</b>	
Alex Blanton 926-1792	Sue Duvall 926-8714	Judy Gude 926-8843	
<b>Newsletter Editor</b>	<b>2100/2200 Mistletoe Blvd.</b>	<b>2200 Weatherbee</b>	
Sevan Melikyan 921-2120	Gil DeHoyos 926-6409	Susan Harwell 923-8806	
<b>Historic Preservation Committee</b>	<b>2300/2400 Mistletoe Blvd.</b>	<b>1100 Clara</b>	
Heather White 266-8299	Lisa Stewart 924-9666	Jack and Lorri Kendrick 924-2800	
<b>Street Rep Captains</b>	<b>2100/2200 West Magnolia</b>	<b>1200 Clara</b>	
Pat Hale (East) 924-5263	Sherry Choate 923-7335	Betty Arvin 924-7088	
Gaye Reed (West) 921-0009	<b>2300 West Magnolia</b>	<b>1100 Buck</b>	
<b>Welcome Baskets</b>	Susan Pressley 923-6061	Kate Herring 921-9027	
Joy Teague 923-2330	<b>2100 Harrison</b>	<b>1200/1300 Buck</b>	
<b>Advertising Manager</b>	Elizabeth Sims 926-3548	Simone Scott 924-3838	
Nancy Brown 923-7146	<b>2200 Harrison &amp; Jerome</b>	<b>2100 Morphy</b>	
<b>Newby Park</b>	Scott Doty 924-2644	Debra Tice 921-4651	
Patsy Slocum 923-5510	<b>2300/2400 Harrison</b>	<b>1100 Mistletoe Dr.</b>	
<b>City Liaison</b>	Faye Dowdle 926-7571	Kim Musgrove 923-6785	
Mike Windsor 377-0060	<b>2100 Mistletoe Ave.</b>	<b>1200 ñ 1500 Mistletoe Dr.</b>	
<b>Historian</b>	Neataw Engels 927-2468	Rochelle Graham 927-2967	
Wyatt Teague 923-2330	<b>2200 Mistletoe Ave.</b>	<b>2300 Mistletoe Dr.</b>	
<b>Yard of the Month</b>	Richard/Christi Yantis 924-2857	Sandy Tarpley 924-9215	
Patsy Slocum 923-5510	<b>2300 Mistletoe Ave.</b>	<b>Forest Park Blvd.</b>	
	Sam & Jack Bradbury 926-9095	Steve McReynolds 926-7955	
<b>MHAYEARLY DUES</b>			
Dues are \$5, \$10, \$25 or more.			
Your dues help to defer the cost of this newsletter, the Mistletoe Heights phone directory and many other neighborhood functions. Dues are accepted by Alex Blanton (call for address - 926-1792).			
	<b>Neighborhood Police Officer East of Forest Park</b>	<b>Neighborhood Police Officer West of Forest Park</b>	
	Officer Leah T. Wagner	Officer Kirk Byrom	
	Office 871-8885	Office 871-5471	
	Mobile 991-8473	Mobile 992-0185	
	Pager 998-0673	Pager 998-0689	
	Email:	Email:	
	<a href="mailto:Leah.Wagner@fortworthgov.org">Leah.Wagner@fortworthgov.org</a>	<a href="mailto:Kirk.Byrom@fortworthgov.org">Kirk.Byrom@fortworthgov.org</a>	